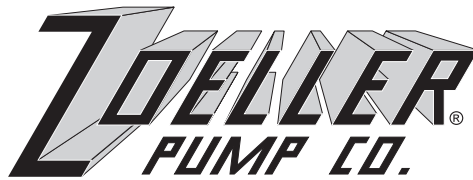


"QUALITY PUMPS SINCE 1939"

Product information presented here reflects conditions at time of publication. Consult factory regarding discrepancies or inconsistencies.

<http://www.zoeller.com>



SECTION: 6.10.350

FM0497

0298

Supersedes

0396

MAIL TO: P.O. BOX 16347 • Louisville, KY 40256-0347
 SHIP TO: 3649 Cane Run Road • Louisville, KY 40211-1961
 (502) 778-2731 • 1 (800) 928-PUMP • FAX (502) 774-3624

REPLACEMENT PARTS LIST FOR MODELS:

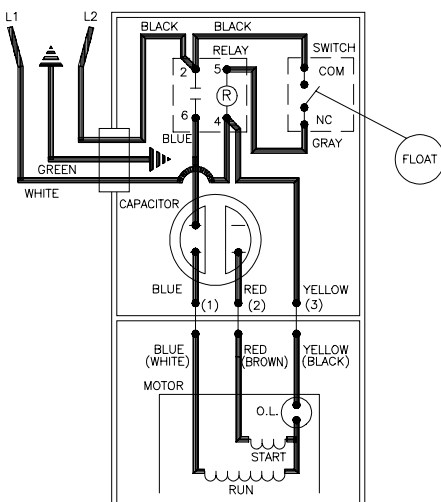
D284 AUTOMATIC 230V E284 NONAUTOMATIC 230V

Consult factory for all other models

TO ORDER REPLACEMENT PARTS:

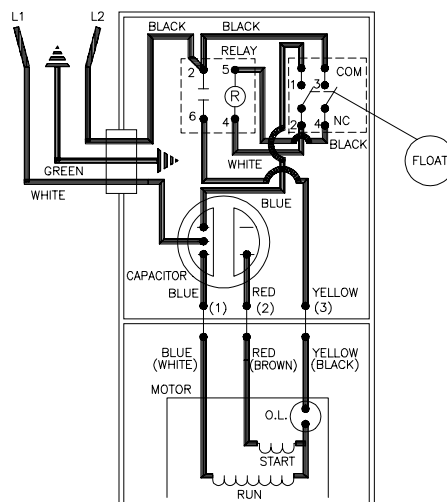
PLEASE FURNISH THE FOLLOWING INFORMATION:

- Model Number.
- Part Number of Pump.
(If manufactured prior to June 1988, give 2 letter date code following Model No.)
- Part Number and Description of part.



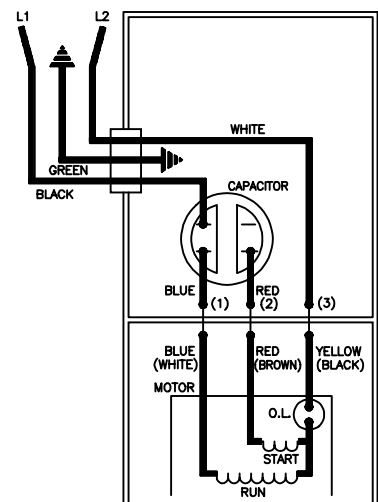
002398B

WIRING DIAGRAM FOR MODELS
"D284-A"
11/81 (XM) thru 8/86 (US)



004622

WIRING DIAGRAM FOR MODELS
"D284-B" and "D284-C"
9/86 (VS) thru Current



002397B

WIRING DIAGRAM FOR MODELS
"E284-A", "E284-B" and "E284-C"
11/81 (XM) thru Current

REPLACEMENT PARTS LIST FOR MODEL "D284"

See back page for "D284" illustration.

REF. NO.	DESCRIPTION	QTY	NOTES	MODEL: D284-A D284-B D284-C								
				11/81 XM thru 8/86 US	9/86 VS thru 12/92	1/93 thru Current						
1	Case Switch & Cd/230V/1Ph"284"	1	2,3	003171	004847	004847						
2	• Guard	1		001023	001023	001023						
3	Case-Mach "160/180/280/290"	1	2,3	004847	004614	004614						
4	• Arm & Seal Asm "160/180/290"	1	2	002379	004745	004745						
5	• Gasket,Case/Cover	1		001011	001011	001011						
6	Switch Asm "160/180/290"	1	2	002380	004744	004744						
□	Lead Wire (Gray)	1		002609	NA	NA						
7	• Wire Pkg (5) Wires	1		001070	004749	004749						
8	Relay 230V G1 (&G5)	1		217093	217093	217093						
9	Capacitor & Clamp Asm	1		002381	002381	002381						
10	Float,Plastic	1		094039	094039	094039						
11	Guide Asm,Fit Rod	1		094048	094048	094048						
12	Rod Asm,Fit	1		001043	001043	001043						
13	Housing,Mtr-& Str 230V/1Ph 284	1	1, 6	003175	003175	003175						
14	Bearing,Sleeve	1		001012	001012	001012						
15	• Handle	1		217069	217069	217069						
16	Cord Term & Seal Asm 230V	1	2,3	217043	094072	094072						
17	Clamp,Strain Relief-Red	1	3	001770	001770	001770						
18	• Seal,Cord-Asm & Strain Relief	1	3	094032	094032	094032						
19	• Plug,Test-White	2		034090	034090	034090						
20	• Seal,Thru Wall Term	3		003402	003402	003402						
21	Rotor & Brg 230V/1Ph	1	6	003176	003176	008581						
22	• Bearing,Lower Rotor	1		094106	094106	001013						
23	• Seal,Mtr Hsg	1		001014	001014	001014						
24	• Oil,Dielectric-(44 Oz Can)	1		003168	003168	003168						
25	Adapter-Mach "280"	1		002357	002357	001003						
26	• Seal,Shaft "282","284"	1		002946	002946	002946						
27	{ Flange Pkg 2"Npt	1		217024	217024	217024						
	{ Flange Pkg 3"Npt	1		317024	317024	317024						
28	Impeller "284"	1		002999	002999	002999						
29	Housing,Pump-Mach	1		217012	217012	217012						
30	• Screw,#10-24 X.375 RHM-SI SS	2		001883	001883	001883						
31	• Screw,#6-32X.25RHM SI Tc Stlgr	4		001877	001877	001877						
32	• Screw, .25-20 X .75 HHm-SS	4		001916	001916	001916						
33	• Screw,#6-32X.438RhsItlp"1"Stlzi	2		001877	004644	004644						
34	• Screw, .5-13 X 2 HH Cap-SS	2		001909	001909	001909						
35	• Washer,SS-1.25"Odx.562"Idx.078	2		002115	002115	002115						
36	• Screw, .313-18 X 1"HH Cap-SS	4		002608	002608	002608						
37	• Screw, .25-20X1" HHm-SS	4		007790	007790	007790						
□	Rebuild Kit "280"	1		003170	004758	007980						

- Items included in Rebuild Kit.
- Not shown in illustration.

NOTES:

- 1) Mtr. Hsg., Brg., Stator & Term. (Item 13) are preassembled at the factory and must be replaced as a unit. Stator is permanently attached to the motor Housing. Plug (Item 19); Seal, Thru Wall Term. (Item 20) and Bearing - Upper (Item 14) are replaceable.
- 2) When ordering these parts, customer must identify if switch is a General Electric switch.
- 3) If an "X" follows Model No., or Date Mfg. on brass ID tag, consult factory for ordering any parts.
- 4) See FM0160 Parts Price Sheet for listing of parts prices.
- 5) "NA" indicates, not applicable.
- 6) When ordering Motor Housing, Bearing, Stator and Term. (Item 13) or Rotor (Item 21) specify either GE or Emerson motor. GE motor can be identified by (4) holes spaced at 90° around the outside diameter of the stator. Emerson motor can be identified by (4) flat edges spaced at 90° around the outside diameter of the stator.

DATE CODE OF MANUFACTURE FROM 12/70 to 12/88				
1st LETTER MONTH		2nd LETTER YEAR		
M — JAN.	T — JULY	A — 1971	G — 1977	O — 1983
N — FEB.	U — AUG.	B — 1972	H — 1978	P — 1984
O — MARCH	V — SEPT.	C — 1973	I — 1979	R — 1985
P — APRIL	W — OCT.	D — 1974	J — 1980	S — 1986
R — MAY	X — NOV.	E — 1975	M — 1981	T — 1987
S — JUNE	Y — DEC.	F — 1976	N — 1982	U — 1988

NOTE: Four digit (MMYY) date of mfg. used after June, 1988.
IE: MMY = 0192 = Jan. 1992.

REPLACEMENT PARTS LIST FOR MODEL "E284".

See back page for "E284" illustration.

				MODELS: E284-A E284-B E284-C									
REF. NO.	DESCRIPTION	QTY	NOTES	11/81 XM thru 8/86 US	9/86 VS thru 12/92	1/93 thru Current							
1	Cover & Cord 230V/1Ph "280"	1	3	003174	003174	003174							
2	Cover-Mach	1	3	001077	001077	001077							
3	• Gasket,Case/Cover	1		001011	001011	001011							
4	• Wire Pkg	1		001070	004749	004749							
5	Capacitor & Clamp Asm	1		002381	002381	002381							
6	Housing,Mtr-& Str 230V/1Ph 284	1	1,2	003175	003175	003175							
7	Bearing,Sleeve	1		001012	001012	001012							
8	• Handle	1		217069	217069	217069							
9	Cord Term & Seal Asm 230V	1	3	003618	003618	003618							
10	Clamp,Strain Relief-Red	1	3	001770	001770	001770							
11	• Seal,Cord-Asm & Strain Relief	1	3	094032	094032	094032							
12	• Plug,Test-White	2		034090	034090	034090							
13	• Seal,Thru Wall Term	3		003402	003402	003402							
14	Rotor & Brg 230V/1Ph	1	2	003176	003176	008581							
15	• Bearing,Lower Rotor	1		094106	094106	001013							
16	• Seal,Mtr Hsg	1		001014	001014	001014							
17	• Oil,Dielectric-(44 Oz Can)	1		003168	003168	003168							
18	Adapter-Mach "280"	1		002357	002357	001003							
19	• Seal,Shaft "282","284"	1		002946	002946	002946							
20	{ Flange Pkg 2"Npt	1		217024	217024	217024							
	{ Flange Pkg 3"Npt	1		317024	317024	317024							
21	Impeller "284"	1		002999	002999	002999							
22	Housing,Pump-Mach	1		217012	217012	217012							
23	• Screw,#6-32x.25RHM SI Tc Stlgr	4		001877	001877	001877							
24	• Screw,#10-24 X.375 RHM-SI SS	2		001883	001883	001883							
25	• Screw,.25-20 X .75 HHm-SS	4		001916	001916	001916							
26	• Screw,.5-13 X 2 HH Cap-SS	2		001909	001909	001909							
27	• Washer,SS-1.25"Odx.562"Idx.078	2		002115	002115	002115							
28	• Screw,.313-18 X 1"HH Cap-SS	4		002608	002608	002608							
29	• Screw,.25-20X1" HHm-SS	4		007790	007790	007790							
▣	Rebuild Kit "280"	1		003170	004758	007980							

- Items included in Rebuild Kit.
- ▣ Not shown in illustration.

NOTES:

- 1) Mtr. Hsg., Brg., Stator & Term. (Item 6) are preassembled at the factory and must be replaced as a unit. Stator is permanently attached to the Motor Housing. Plug (Item 12); Seal, Thru Wall Term. (Item 13) and Bearing - Upper (Item 7) are replaceable.
- 2) When ordering Motor Housing, Bearing, Stator and Term. (Item 6) or Rotor (Item 14) specify either GE or Emerson motor. GE motor can be identified by (4) holes spaced at 90° around the outside diameter of the stator. Emerson motor can be identified by (4) flat edges spaced at 90° around the outside diameter of the stator.
- 3) If an "X" follows Model No., or Date Mfg. on brass ID tag, consult factory for ordering any parts.
- 4) See FM0160 Parts Price Sheet for listing of parts prices.
- 5) "NA" indicates, not applicable.



<http://www.zoeller.com>

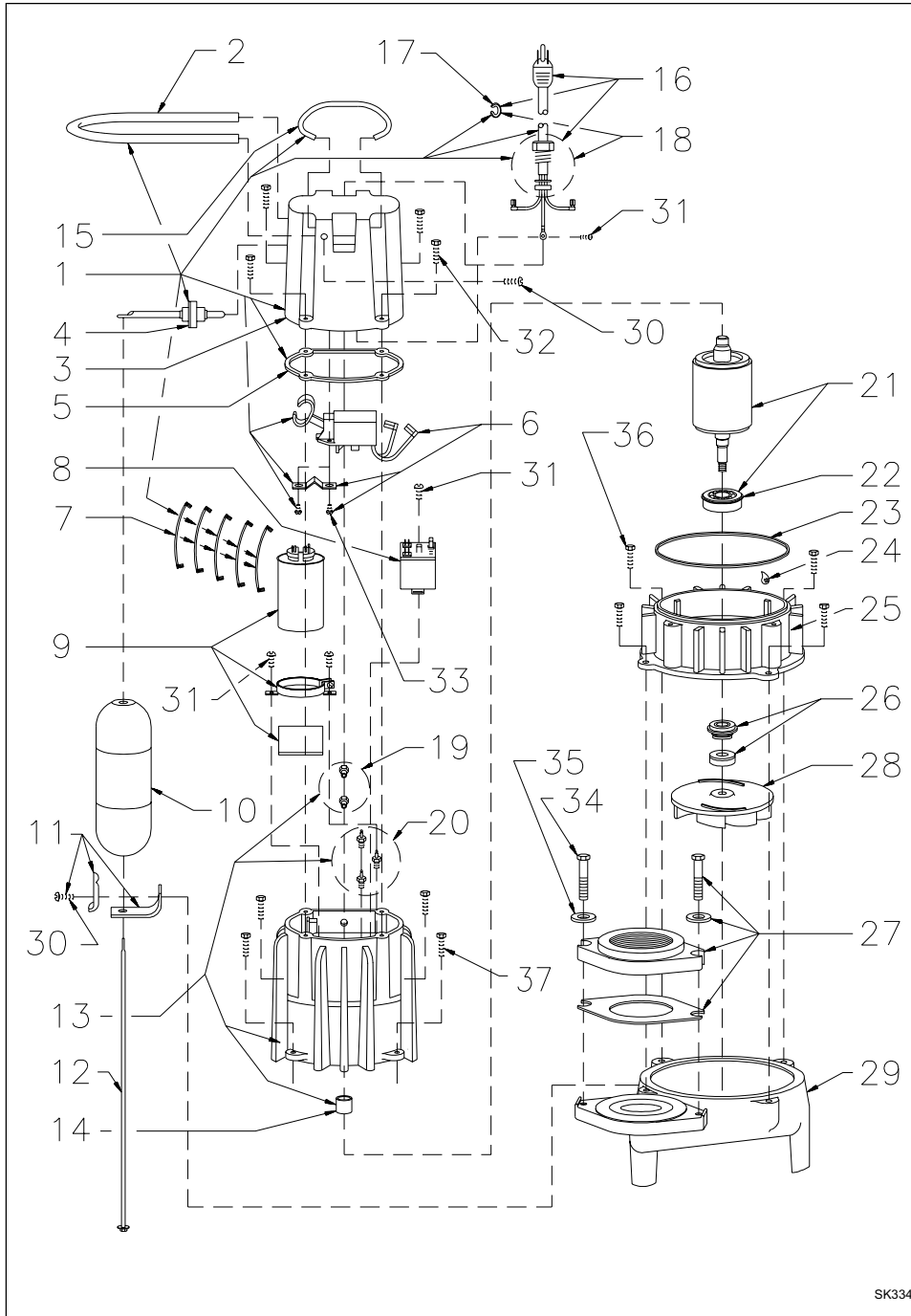


MAIL TO: P.O. BOX 16347
 Louisville, KY 40256-0347
 SHIP TO: 3649 Cane Run Road
 Louisville, KY 40211-1961
 (502) 778-2731 • 1 (800) 928-PUMP
 FAX (502) 774-3624

Manufacturers of . .

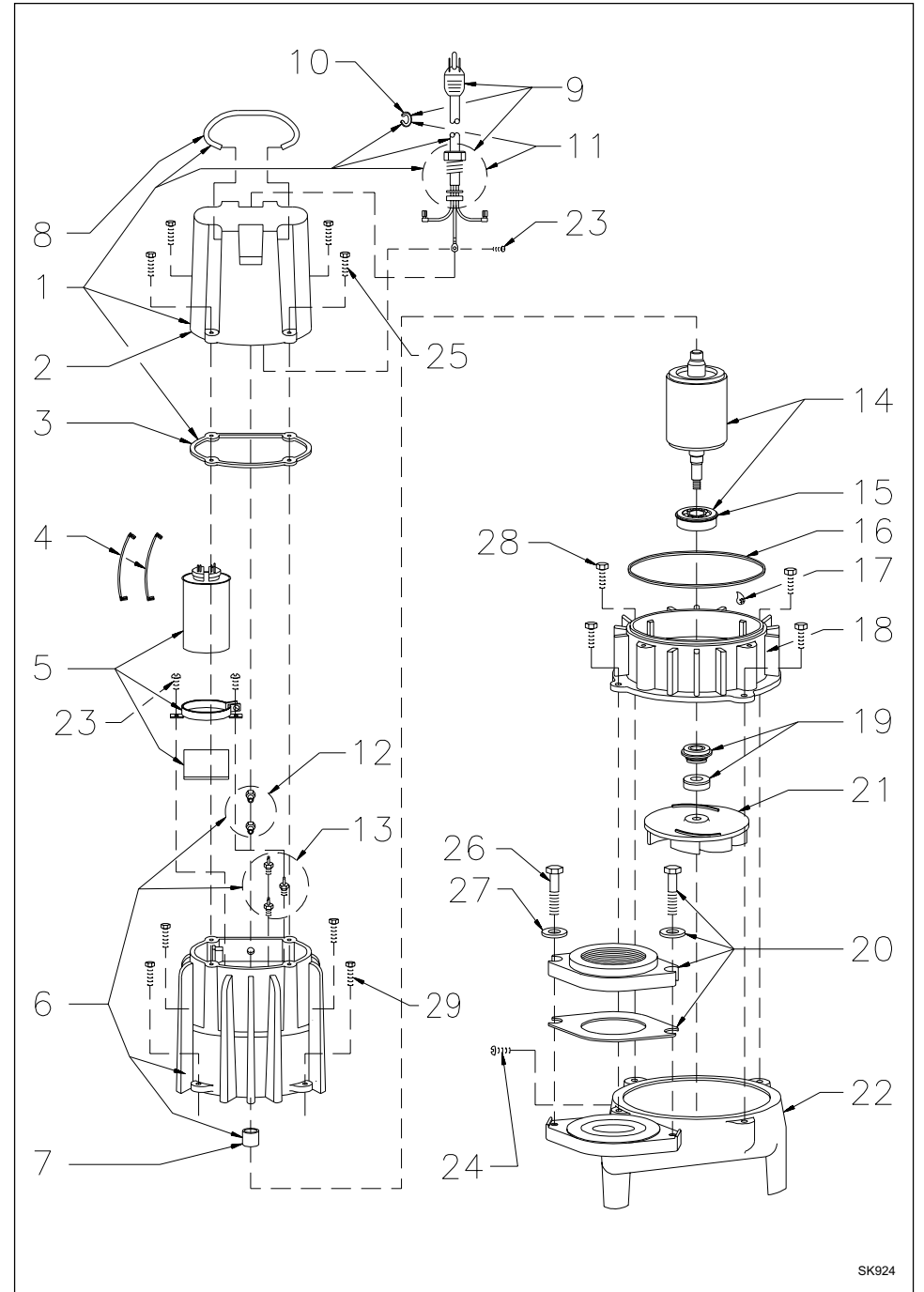
"QUALITY PUMPS SINCE 1939"

REPLACEMENT PARTS ILLUSTRATION FOR MODEL "D284"



SK334

REPLACEMENT PARTS ILLUSTRATION FOR MODEL "E284"



SK924