



#2B
Stock Cooling Coils

1-800-USA-COIL
(1-800-872-2645)

FAX: (610) 296-9763 • www.usacoil.com

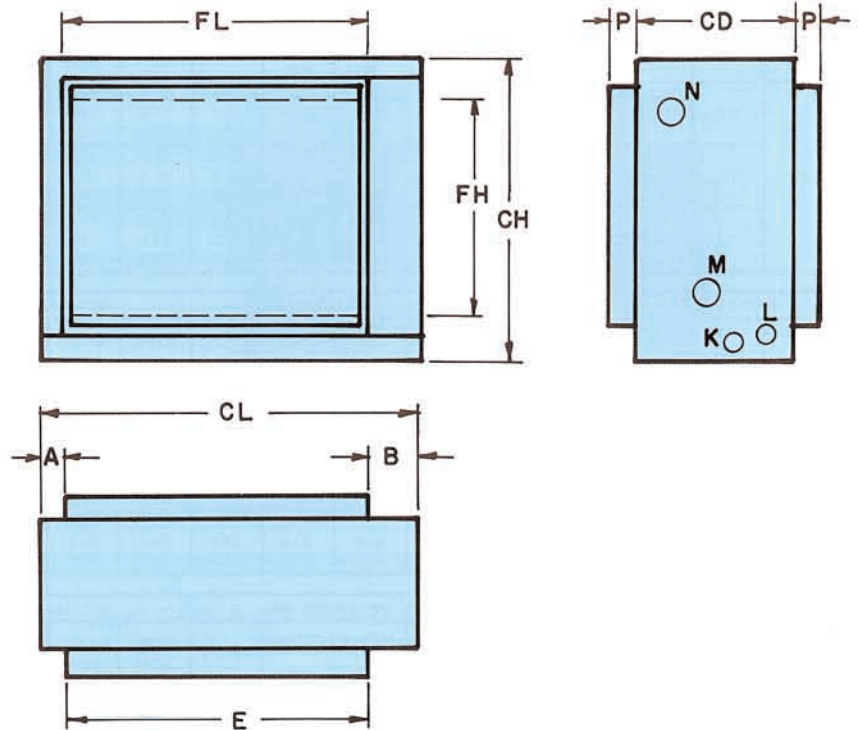
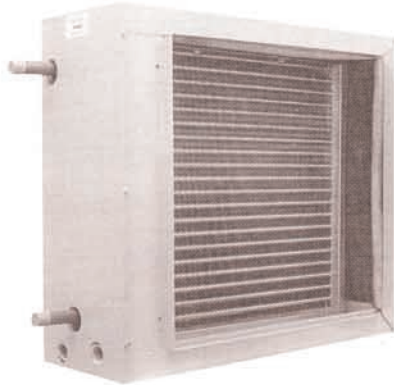


SECTION	DESCRIPTION	PAGE NUMBER
1 Cooling Coil	Chilled Water Coil Cabinets - Horizontal	2
	Chilled Water Coil Cabinets - Vertical	3
	DX Coil Cabinets - Horizontal	4
	DX Coil Cabinets - Vertical	5

1-800-USA-COIL
(1-800-872-2645)

FAX: (610) 296-9763 • www.usacoil.com

Chilled Water Coil Cabinets



CABINET DIMENSIONS

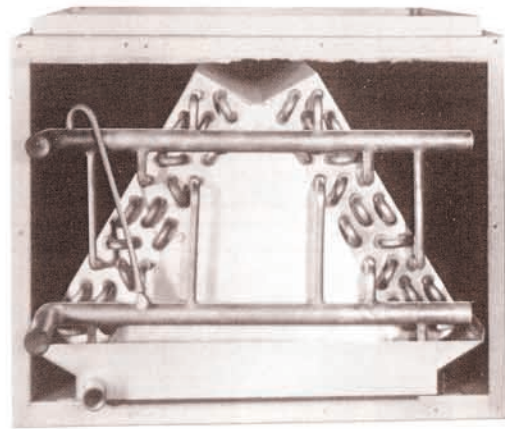
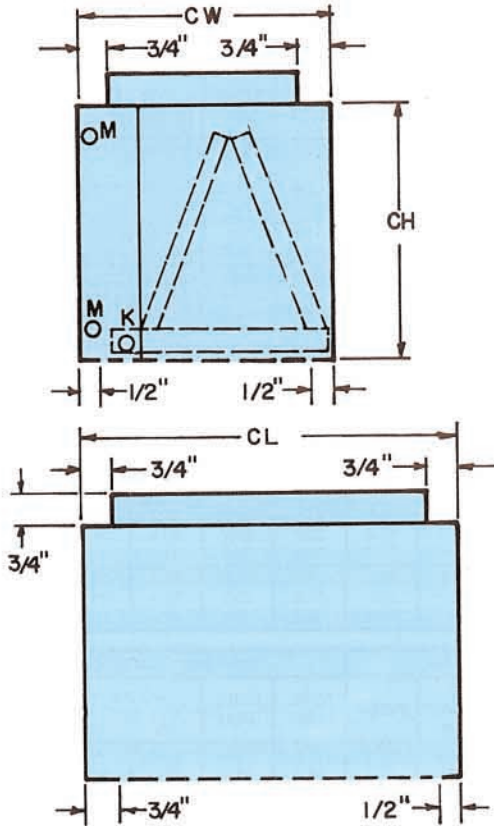
MODEL	NOM. TON	CH	CD	CL	FH	FL	A	B	K(FPT)	L(FPT)	M	N	P
CWCH-800	2	23 1/2"	9 1/2"	20"	20"	15"	1 3/4"	3 1/4"	3/4"	3/4"	7/8"SWT	7/8"SWT	1"
CWCH-1200	3	23 1/2"	9 1/2"	26 1/2"	20"	21 1/2"	1 3/4"	3 1/4"	3/4"	3/4"	7/8"SWT	7/8"SWT	1"
CWCH-1600	4	23 1/2"	9 1/2"	34"	20"	29"	1 3/4"	3 1/4"	3/4"	3/4"	1 1/8"SWT	1 1/8"SWT	1"
CWCH-2000	5	23 1/2"	9 1/2"	41"	20"	36"	1 3/4"	3 1/4"	3/4"	3/4"	1 1/8"SWT	1 1/8"SWT	1"
CWCH-3000	7.5	27 1/2"	9 1/2"	53 1/2"	24"	45"	1 3/4"	6 5/8"	3/4"	3/4"	1 3/8"SWT	1 3/8"SWT	1"
CWCH-4000	10	33 1/2"	9 1/2"	56 1/2"	30"	48"	1 3/4"	6 5/8"	3/4"	3/4"	1 3/8"SWT	1 3/8"SWT	1"

SPECIFICATIONS

MODEL	NOM. TONS CAP.	RATED CFM	SQ. FT. FACE AREA	FIN. DIMENSIONS HEIGHT x WIDTH	ROWS/FINS	TUBE	SHIPPING WEIGHT/LBS.
CWCH-800	2	800	2.08	20" x 15"	4/10	3/8	45
CWCH-1200	3	1200	3.00	20" x 21 1/2"	4/10	3/8	56
CWCH-1600	4	1600	4.00	20" x 29"	4/10	3/8	63
CWCH-2000	5	2000	5.00	20" x 36"	4/10	3/8	76
CWCH-3000	7.5	3000	7.50	25" x 43"	4/10	3/8	130
CWCH-4000	10	4000	9.60	30" x 46"	4/10	3/8	156

FEATURES

- Coils are made of copper tubes, aluminum fins and galvanized steel end plates.
- Large removable panels are provided on the cabinets for service access.
- Cabinets are fabricated from heavy gauge steel and painted with baked-on enamel before assembly.
- Cabinets are insulated with 3/4" thick vinyl-coated fiberglass of 1 1/2" density.



USA COIL & AIR MODEL CWCV HAS COIL AND CABINET
MODEL CWA HAS COIL ONLY

COIL AND CABINET ARE SHIPPED SEPARATELY

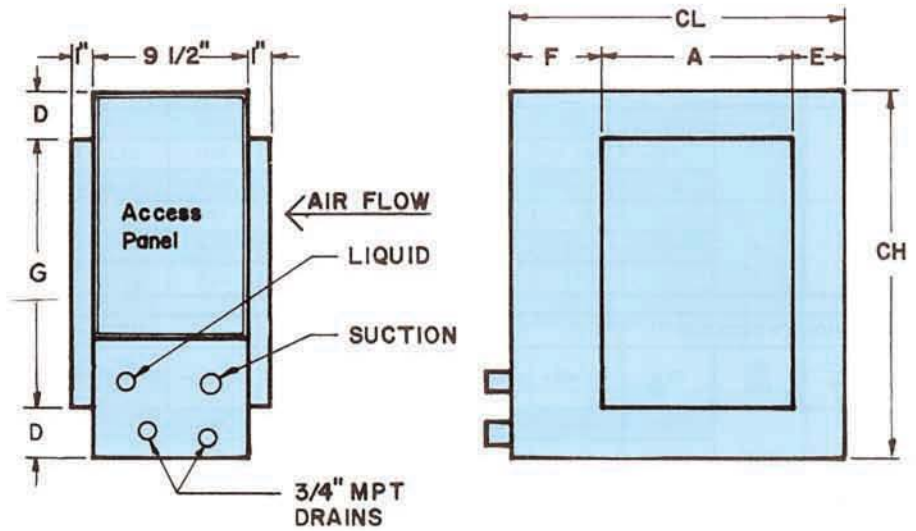
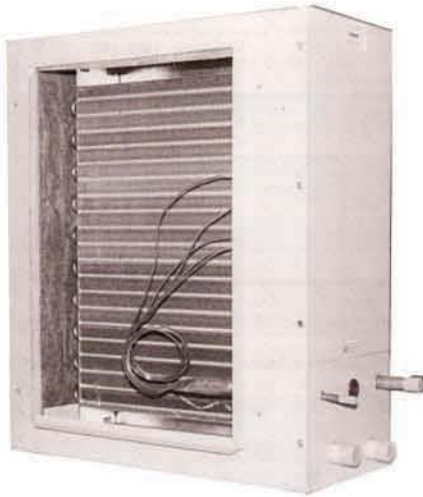
CABINET DIMENSIONS

MODEL NO.	CW	CH	CL	K	M	APPROX. WT./LBS.		COIL ONLY ASSEMBLY DIMENSIONS MODEL CWA		
						WITH CAB.	COIL ONLY	W	H	D
CWCV-800	22	15 1/4	22	3/4" O.D. SWT	3/4" O.D. SWT	54	29	18 3/4	11 1/2	21 3/4
CWCV-1200	22	15 1/4	22	3/4" O.D. SWT	3/4" O.D. SWT	62	37	18 3/4	12	21 3/4
CWCV-1600	24 7/8	19 1/2	22	7/8" O.D. SWT	7/8" O.D. SWT	77	46	22 3/4	16 1/4	21 1/2
CWCV-2000	28 1/2	19 1/2	22	1 1/8" O.D. SWT	1 1/8" O.D. SWT	91	56	26 3/4	16 1/2	21 1/2
CWCV-3000	39	19 1/2	22	1 1/8" O.D. SWT	1 1/8" O.D. SWT	117	74	37 3/4	16 1/2	21 1/2
CWCV-4000	51 1/2	19 1/2	22	1 3/8" O.D. SWT	1 1/8" O.D. SWT	162	102	48 3/4	16 1/2	21 1/2

SPECIFICATIONS

MODEL NO.	NOM. TONS CAP.	RATED CFM	SQ. FT. F.A.	ROWS/FINS	TUBE
CWCV-800	2	800	3.0	3/12	3/8
CWCV-1200	3	1200	3.0	4/12	3/8
CWCV-1600	4	1600	4.0	4/12	3/8
CWCV-2000	5	2000	5.1	4/12	3/8
CWCV-3000	7	3000	7.34	4/12	3/8
CWCV-4000	10	4000	9.4	4/12	1/2

K = Drain Connections M = Coil Connections



FEATURES

- Coils are made with copper tubes, aluminum fins and galvanized steel endplates.
- Large removable panels from either side of the cabinets for service access.
- Cabinets are fabricated from heavy gauge steel and painted with baked-on enamel before assembly.
- Cabinets are insulated with 3/4" thick vinyl-coated fiberglass of 1 1/2 lb. density.

CABINET DIMENSIONS

DXCH-3000	44.5	27.5	53.5	1.75	1.75	6.63	24	.625	1 1/8
DXCH-4000	47.5	33.5	56.5	1.75	1.75	6.63	30	.625	1 3/8

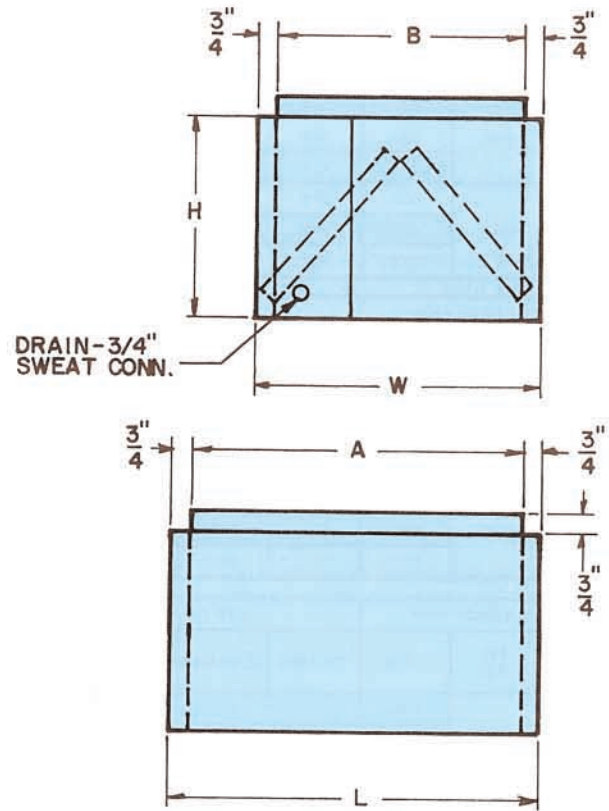
SPECIFICATIONS

DXCH-3000	7.5	3000	7.16	3	3/8	10	131
DXCH-4000	10	4000	10.25	3	3/8	10	155

2 through 5 ton are LH Connections, 7.5 and 10 are RH Connections

2 Thru 10 Tons
Vertical

Direct Expansion Coil Cabinets



**USA COIL & AIR MODEL DXCV HAS COIL AND CABINET
MODEL DXA HAS COIL ONLY**

COIL AND CABINET ARE SHIPPED SEPARATELY

CABINET DIMENSIONS

MODEL NO.	W	H	L	A	B	LIQUID LINE O.D. SWT	SUCTION LINE O.D. SWT	SHIPPING WEIGHT LBS.	
								W/CAB	W/O CAB
DXCV-800	22	15 1/4	22	20.5	20 1/2	3/8	3/4	50	34
DXCV-1200	22	15 1/4	22	20.5	20 1/2	3/8	3/4	56	37
DXCV-1600	24 7/8	19 1/2	22	20.5	23 5/8	1/2	7/8	71	50
DXCV-2000	28 1/2	19 1/2	22	20.5	27	1/2	1 1/8	85	58
DXCV-3000	39	19 1/2	22	20.5	37 1/2	5/8	1 1/8	125	75
DXCV-4000	51 1/2	19 1/2	22	20.5	50	5/8	1 3/8	164	105

SPECIFICATIONS

MODEL NO.	TONS CAP. NOM.	RATED CFM	SQ. FT. F.A.	ROWS	TUBES	COIL ONLY ASSEMBLY DIMENSIONS MODEL DXA		
						WIDTH	HEIGHT	DEPTH
DXCV-800	2	800	3.0	2	3/8	18.75	11 1/2	21 3/4
DXCV-1200	3	1200	3.0	3	3/8	18.75	12	21 3/4
DXCV-1600	4	1600	4.0	3	3/8	22.75	16 1/4	21 3/4
DXCV-2000	5	2000	5.11	3	3/8	26.75	16 1/2	21 3/8
DXCV-3000	7	3000	7.34	3	3/8	36.75	16 1/2	21 3/8
DXCV-4000	10	4000	9.40	3	1/2	48.75	16 1/2	23 3/8

Coils are stocked with TXV's mounted. Coils and cabinets are shipped separately.