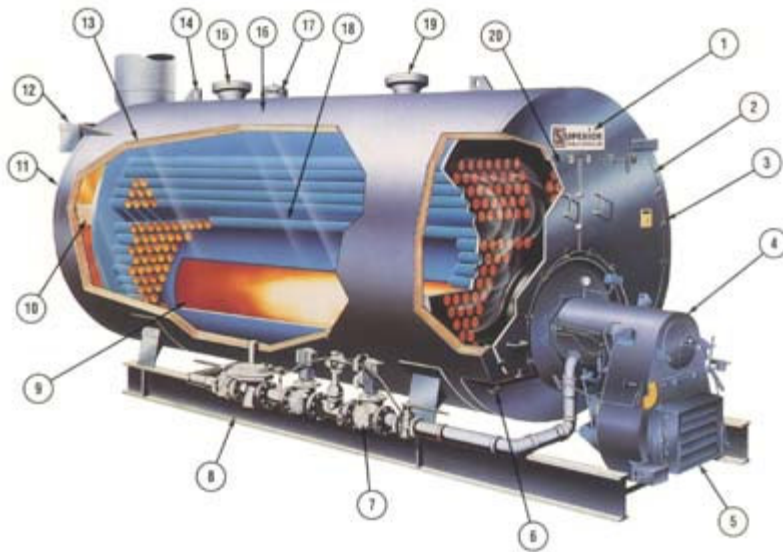


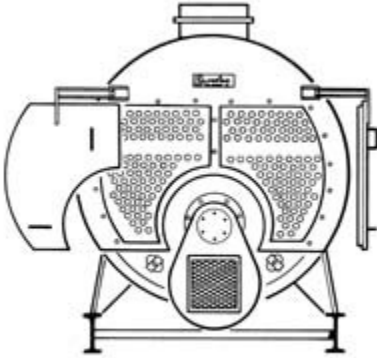
## Seneca - Engineered & Manufactured for SUPERIOR Performance



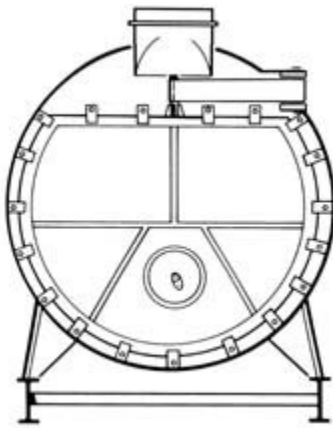
1. Seneca boiler/burner units are covered by Superior's warranty effective for 18 months from shipment or one year from date of start-up. See warranty for complete details.
2. Davited front doors allow for total access to the return tubes without interference of baffles or inner doors.
3. To assure ease of opening and closing, front and rear doors utilize studs with lugs and brass nuts.
4. UL Labeled boilers are supplied with Gordon-Piatt burners. Other boiler burner combinations are available upon request. All burners are specifically matched with the pressure vessel for complete, efficient combustion. Burners are available in either gas or oil, or in a combination of gas and oil using either air or pressure atomization of the oil.
5. Air louver linkage and setting are visible for ease of monitoring, adjusting and cleaning.
6. 22-gauge galvanized/phosphate coated steel jacket is painted with a high temperature hard silicone paint.
7. Factory-installed gas train is equipped with main gas pressure regulator. Gas train can be mounted on either side of the boiler for ease of installation. Standard gas trains comply with UL requirements and can be modified to meet IRI, FM, CSD-1, and NFPA85A.
8. Structural steel skid-type base supports and protects burner
9. Location of large diameter furnace in bottom third of the boiler provides for complete combustion and maximum heat transfer while being in contact with coolest boiler water.
10. Rear refractory is field castable providing for ease of maintenance and eliminates costly refractory repairs.
11. The Seneca's rear door is sealed with a ceramic fiber blanket for ease of maintenance and to assure a gas tight seal.
12. Roller-bearing supported davit makes possible a reduced opening space and can be arranged for left or right hand opening.
13. Two-inch mineral fiber insulation with 8-lb. density per square ft. and an R Factor of 8.7.
14. Lifting Lugs facilitate loading and unloading.
15. Hot water return with dip tube to help stem the entrance of air into the system.
16. Two hand holes are supplied in the front tubesheet for ease of maintenance.
17. Manways are standard equipment on boilers model 13-1000 and larger.
18. Efficient/economical 3-pass design.

19. Return water inlet complete with a reducing 90 degree elbow. The resulting jet provides for the mixing of the return water with the hot water in the boiler.

20. Front smokebox and doors are lined with ceramic fiber blanket.



Full front tubesheet access is provided by split/davited doors. No electrical, fuel lines or linkage must be disconnected for access to the fireside. Front smokebox doors lined with ceramic fiber blanket.



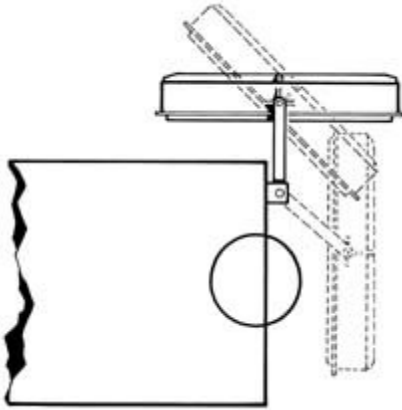
Full rear tubesheet access is standard by means of the davited rear doors or through the 15" diameter access in units 70 BoHPP and larger. Available as an option on smaller units.



Waterside access is provided by two 3" x 4" handholes in the front tubesheet near the bottom of the shell in addition to two handholes on the bottom centerline.



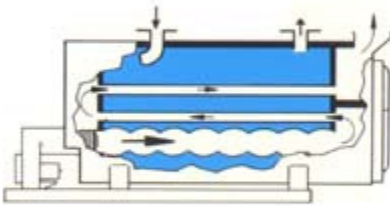
Segmented rear refractory blocks/bridge formed from 2450-degree F castable refractory for long life and ease of maintenance or repair.



Davited rear door allows for total fireside access and reduces opening space required for hinged doors - either right- or left-hand swing. Roller bearing supported davit provides ease of opening and closing.



All Seneca boilers can be supplied with optional blending pumps and insulated piping.



Seneca's 3-pass gas travel maintains good gas velocities while maintaining moderate gas-side pressure drops, resulting in high gas-to-water heat transfer and reduced blower-motor loads.



Factory fire test - each packaged boiler/burner unit undergoes a complete fire test, including a thorough check of all electrical components and adjustment of the combustion.

All Seneca boiler/burner units are manufactured to ASME code requirements; each unit is checked by a registered inspector of the National

Board of Boiler and Pressure Vessel Inspectors.



ASME  
CONSTRUCTION

National Board Of  
Boiler and Pressure  
Vessel Inspection



U.L. LABEL "B" LISTED

IRI / FM - Approval



| [Products](#) - [Specifications](#) - [Dimensional Data](#) - [References](#) - [Distributors](#) |  
| [Testimonials](#) - [Showcase](#) - [Employment](#) - [Email Form](#) - [Home](#) |

**Superior Boiler Works**  
P.O. Box 1527  
Hutchinson, KS 67504-1527  
Toll Free: (800) 444-6693  
Phone: (620) 662-6693  
Fax: (620) 662-7586  
E-mail: [sbw@superiorboiler.com](mailto:sbw@superiorboiler.com)

© 1999-2002 Copyright Superior Boiler Works, Inc. All rights Reserved.