



Line Overview

4" & 6" Submersible Pumps, Jet Pumps, Centrifugal Pumps, Specialty Pumps, Sump Pumps, Utility Pumps and Sewage Pumps

4" Submersible Pumps 1/2 to 7 1/2 HP • 5 to 85 GPM

SERIES "4F"

Stainless Steel, Plastic or Cast Iron Fitted



- "S" Commander® Series with S.S. Shell and 304 S.S. Suction & Discharge Housing - 5 thru 85 GPM
 - "A" Captain® Series with S.S. Shell and Cast Iron Suction & Discharge Housing - 5 thru 85 GPM
 - "G" Series with Coated Carbon Shell and Cast Iron Suction & Discharge Housing - 5 thru 27 GPM
 - "P" Series with S.S. Shell and Glass-filled Noryl mounting ring and discharge
 - Stainless Steel Pump Shell*
 - Stainless Steel Hex Drive, Pump Shaft and Coupling
 - Stainless Steel or Corrosion Resistant Screen and Cable Guard
 - NEMA Standard Motor Mounting Ring
 - Field Replaceable Cartridge Assembly, Lead Guard, Motor and Motor Lead Wire Assembly
 - Stainless Steel, NEMA Franklin Motors
- * "G" Series utilizes powder coated carbon steel pump shell.



Low, medium and high capacity submersible pumps for home, farm industry and dozens of other domestic or commercial applications

For further information on all products, visit www.flintandwalling.com

Commander Pro® “CP” Series 75 &150 Constant Pressure Systems

The F&W Commander Pro® 75 and 150 systems combine reliability and state-of-the-art technology to provide private water system owners with constant pressure and more water on demand. Commander Pro® Systems provide constant pressure by continually adjusting pump performance to meet water demand. This system also eliminates pressure cycling during long-running applications such as lawn sprinkling and geothermal heat pump operation.

FEATURES:

- Easy Installation
- Increases flow as demand increases
- Adjustable constant pressure
- Built-in diagnostics
- Automatic pump and motor protection
- Smart Reset® technology

Also available: CP300 Series High Capacity 35 - 85 GPM Stainless Steel Submersible Pumps with SubDrive 300 Variable Speed Controller

DESIGNED FOR THE PROFESSIONAL PUMP INSTALLER

Residential Water Systems

- “City-like” water pressure
- Smaller tank saves space

Geothermal Systems

- No need for large buried tanks
- Eliminates pressure cycling



SYSTEM AVAILABLE WITH OR WITHOUT PRESSURE TANK

APPLICATIONS:

Lawn Irrigation Systems

- Even distribution of water in zones
- Eliminates need for separate system

Water Treatment Systems

- More efficient back flushing
- No need for multiple pumps

6” Submersible Pumps 50, 80 and 120 GPM • 5 to 30 HP

6P SERIES 5 TO 30 HP
50, 80 AND 120 GPM

6T SERIES 5 TO 30 HP
200, 250 AND 325 GPM

Material Construction

Component Description	“6P” Series 50, 80 and 120 GPM 5 thru 30 HP	“6T” Series 200, 250 and 350 GPM, 5 thru 50 HP
Discharge	Cast iron with closed sintered lead free sleeve bearing, 3” NPT	Cast iron, 4” NPT
Pump Shell	304 heavy wall stainless steel	
Cable Guard	302 stainless steel	302 stainless steel
Staging	Axial mixed flow, fiberglass Noryl® impellers and diffusers. Acetal diffuser plate	Cast iron turbine bowls with precision balanced bronze impellers
Stage Bearings	Stainless steel thrust sleeve and marine rubber bearing in each stage	Dual bronze and marine rubber bearings in each stage
Pump Shaft	416 stainless steel 3/4” hex drive shaft with one piece stainless steel motor-to-shaft coupling and snap ring retainer	416 stainless steel, one inch drive shaft and coupling. Tapered stainless steel collar secures impeller to the shaft
Suction Screen	Corrosion resistant 304 stainless steel	Corrosion resistant 304 stainless steel
Motor	All pumps are driven by a complete selection of Franklin Electric single or three phase water lubricated motors. Order motors separately.	
Motor Controls	Franklin Electric control boxes required for single phase motors. Magnetic starters and heaters required for three phase motors. Order controls separately	

Replacement cartridge assembly available for 6P Series pumps. Includes all necessary parts to restore pumps to like-new performance

*Noryl is a registered trademark of General Electric

For further information on all products, visit www.flintandwalling.com



6P

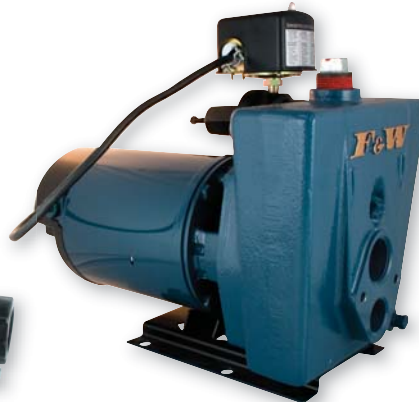
6T

Horizontal Jet Pumps 1/3 - 1 1/2 HP

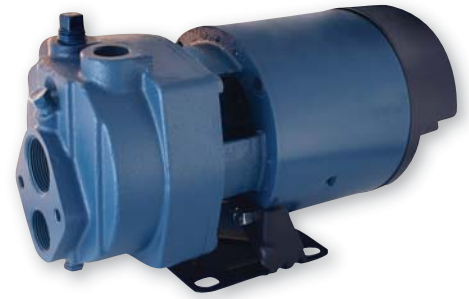
“CPJ”, “CPH”, “EK”
AND “FJ” SERIES



CPJS CONVERTIBLE



CPJ CONVERTIBLE



CPH CONVERTIBLE



EK & CPHS SHALLOW WELL



FJ SHALLOW WELL

Whether operating as a shallow well or deep well pump, count on F & W's versatile, powerful jet pumps to deliver more water at full city pressures! These pumps provide higher single stage capacities and pressures; depths to 150 feet, capacities to 1800 GPH and as much as 90 pound pressure!

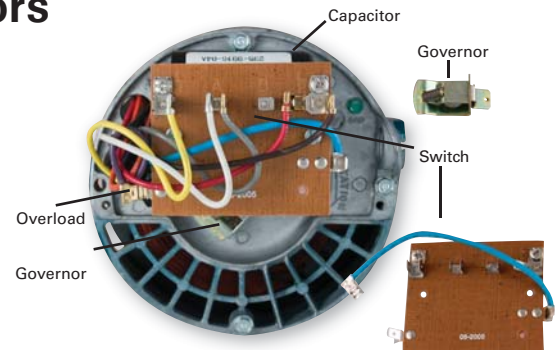
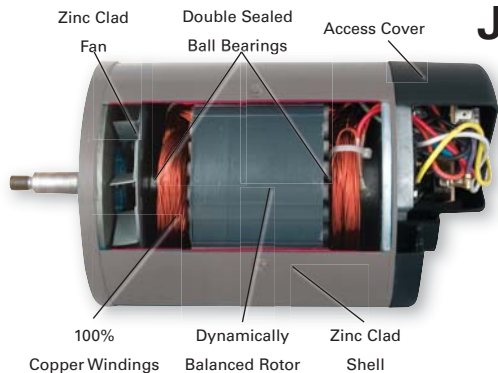
The CPJ, CPH and EK models feature the exclusive Flint and Walling “*Service Plus*” motor,

available in either NEMA J or Uni-frame flange construction. The F & W 56 frame, double ball bearing motor offers the ultimate in performance and dependability. Designed for years of trouble-free operation and simple, swift, on-site servicing, the CPJ and CPH feature unique interchangeability of replacement parts to keep inventories at a minimum.

The FJ Pump is designed for shallow wells with suction lifts

from 0 - 25 ft. Featuring cast iron construction, the pump incorporates an integral shallow well ejector for ready use installation. The TEFC motor is dual voltage (115/230V) with easy change voltage switch. This pump is quick to prime and features a NEMA 3 Rated cover to protect the capacitor from moisture. The permanent split capacitor motor with large lamination design meets essential household water pressure demands.

Service Plus Jet Pump Motors



For further information on all products, visit www.flintandwalling.com

*M*oving water...
One customer at a time.

Deep Well Jet Pumps 3/4 - 2 HP • Single & Multi-Stage



Single Stage "VPH" Series With Adjustable Diaphragm Pressure Regulator
1 HP



Two Stage "VS" Series With Adjustable Diaphragm Pressure Regulator
3/4 - 1 1/2 HP

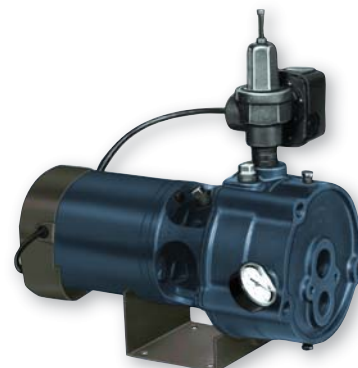


Two Stage "VA" Series With Exclusive Totally Automatic Pressure Regulator
3/4 - 1 1/2 HP



Quality Made by U.S. Craftsmen

"VA" and "VS" Series Jet Pump With Optional Shallow Well Ejector



135276A Optional Pump Base For Horizontal Mounting Of "VA" and "VS" Series Jet Pumps

POULTRY HOUSE MISTING PUMP 1/2 and 3/4 HP Single Phase

- Developed for pressure booster application in poultry house misting.
- Rugged cast iron pump case and ejector. Thermoplastic hydraulic components. Carbon/ceramic shaft seal.
- 1/2 and 3/4 HP 60 Hz., Single Phase, Dual Voltage Nema J Motor
- Includes: special nozzle and venturi, 1-1/4" x 3/4" reducer bushing, 200 lb. pressure gauge and 8 ft. power cord.*



Quality Made by U.S. Craftsmen

Models CPH051622 and CPH071726

SERIES SPJ, LAWN SPRINKLER 3/4—3 HP Single or Three Phase



LATEST SELF-PRIMING DESIGN WHICH PROVIDES:

- Rapid self-priming characteristics under maximum suction conditions.
- Flint & Walling's 56-frame, NEMA J, capacitor start, double ball bearing motors designed for continuous operation.
- 3/4, 1, 1 1/2, 2 and 3 HP sizes with single or three phase options.
- Fast, easy service when necessary. Normal wearing parts are easily removed for service and replacement without disturbing the suction or discharge piping.



SERIES SPM, HIGH HEAD LAWN SPRINKLER 3 HP and 5 HP, Single or Three Phase

- High capacity, high pressure
- Large cast iron pump body to ensure rapid priming
- JM frame industrial duty motor
- Self-adjusting mechanical seal is water lubricated for trouble-free, maintenance free operation
- Designed for lawn and turf sprinkling, irrigation and water transfer
- Cast iron impellers for long life
- 2" NPT Suction and discharge
- Built-in check valve facilitates priming and prevents backflow



SERIES C22000 3—7 1/2 HP Single or Two Stage



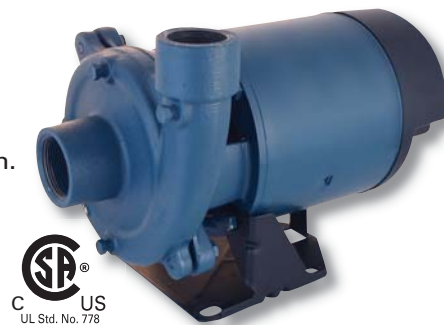
FOR EXTRA PERFORMANCE

- The C22000 Series is a rugged pump built for extra performance.
- Nationally known NEMA JM motors. Nationwide service available from local authorized service stations.
- 3, 5 and 7 1/2 HP sizes with single or three phase options.
- Lead free impellers are electronically balanced.

SERIES CJ103 1/3–2 HP Single or Three Phase

LATEST DESIGN WHICH PROVIDES

- Flint & Walling's 56-frame, NEMA J, capacitor start, double ball bearing motors for continuous operation.
- 1/3, 1/2, 3/4, 1, 1 1/2 and 2 HP sizes with single or three phase options.
- Lead free, electronically balanced brass or thermoplastic impellers.
- Rugged volute type casting. Discharge can be rotated to any one of four positions for horizontal or vertical installation.
- Fast, easy service. Normal wearing parts are easily removed for service and replacement without disturbing the suction or discharge piping.



SINGLE STAGE FOR ECONOMY

SERIES CJ101 3/4–3 HP Single or Three Phase

LATEST DESIGN WHICH PROVIDES



MULTI STAGE FOR HIGH HEAD

- Flint & Walling's 56-frame, NEMA J, capacitor start, double ball bearing motors for continuous operation.
- 3/4, 1, 1 1/2, 2 and 3 HP sizes with single or three phase options.
- Lead free, electronically balanced brass or thermoplastic impellers.
- Rugged cast iron pump casing. Multi stage for high head.
- Fast, easy service. Normal wearing parts are easily removed for service and replacement without disturbing the suction or discharge piping.



PRESSURE BOOSTER "PB" SERIES PUMPS

**1/3 - 3 HP
5, 7, 10, 19, 27 & 35 GPM**



- Flint & Walling's service plus 56-frame, NEMA J, dual voltage motors—single or three phase.
- Three-wire, 8 foot 115 volt grounded power cord and plug supplied on 1/3 HP single phase models. (Not supplied on any other model).
- Thermoplastic impellers and diffusers.

Cast Iron Model Pump Components—Cast Iron suction and discharge castings, 304 S.S. pump shell, 416 S.S. hex pump shaft and carbon/ceramic seal with Buna N rubber parts.

Powder Coated Model Pump Components—Powder coated cast iron suction and discharge castings, 304 S.S. pump shell, 416 S.S. hex pump shaft and carbon/ceramic seal with Buna N rubber parts.

Applications: Pressure Cleaning, Spray or Mist Systems, Jockey Pumps, Booster Service, Reverse Osmosis, Water Circulation and General Purpose Pumping.

**PRESSURES TO 200 PSI— 140°F
MAXIMUM LIQUID TEMPERATURE**

**Booster Pump with F & W
NEMA J Motor**

Stainless Steel Model Pump Components—S.S. suction and discharge castings, 304 S.S. pump shell, 303 S.S. hex pump shaft and carbon/ceramic seal with Viton rubber parts.



Sump Pumps, Effluent Pumps, Sewage Pumps & Utility Pumps



Multi-Stage Effluent 4 Inch Submersible Pumps 5030 - 5035 Series

Multi-stage effluent submersible pumps are used in on-site applications that demand more head than a traditional single stage centrifugal submersible pump. This need is met by offering a complete line of submersible effluent turbine pumps. These pumps have been proven in field applications and have many years of development behind them.

Typical applications include mound systems, drip systems, and recirculation media filters. All units

include cool running submersible motors that do not require external water flow to prevent overheating. Therefore, an outer pump sleeve is not required for models less than 2 HP. Pumps can be installed directly in a dose tank as long as an effluent filter is used on the septic tank outlet. These pumps can also be used in conjunction with a Filtered STEP system.

"FCP" Series City Pressure Booster Pump Systems



**FCP3208S* 2 Stage
City-Pro System**
**FCP3312S* 3 Stage
City-Pro System**

**Stainless steel tank, as shown. For painted tank option, order models FCP3208 or FCP3312*



**FCP208S* 1/2 HP
City-Might System**
**FCP212S* 3/4 HP
City-Might System**

Pre-assembled for easy installation
**Stainless steel tank, as shown.*
For painted tank option, order models FCP208 or FCP212



**FCP108S City-Mate
System**

Pre-assembled for easy installation.
For painted tank option, order Model FCP108

Floating Pond / Aeration Pump System

FEATURES AND BENEFITS

- Produces water fountain up to 15' in height
- Submersible pump fitted with stainless steel castings produces up to 4,900 gallons of water per hour
- Easy to Install - pre-assembled with Water Lily Pattern installed. Two additional patterns, Sky Cannon and Water Trumpet, also included.
- 115V motor with large circular screen to draw water from below the surface for improved aeration and extended motor life
- 100' Electrical cable with GFI plug connects directly to 120V outlet.
- Flotation system with UV resistant, polyethylene float will not water log.
- Operates in 5 feet of water or deeper



APPLICATIONS

- Waterscapes
- Golf courses
- Water aeration for improved pond environment



Model FPS0501