



UNITED BRASS WORKS, INC.
 714 S. Main St., Randleman, NC 27317
 Tel: 800-334-3035 Fax: 800-498-4696 www.ubw.com



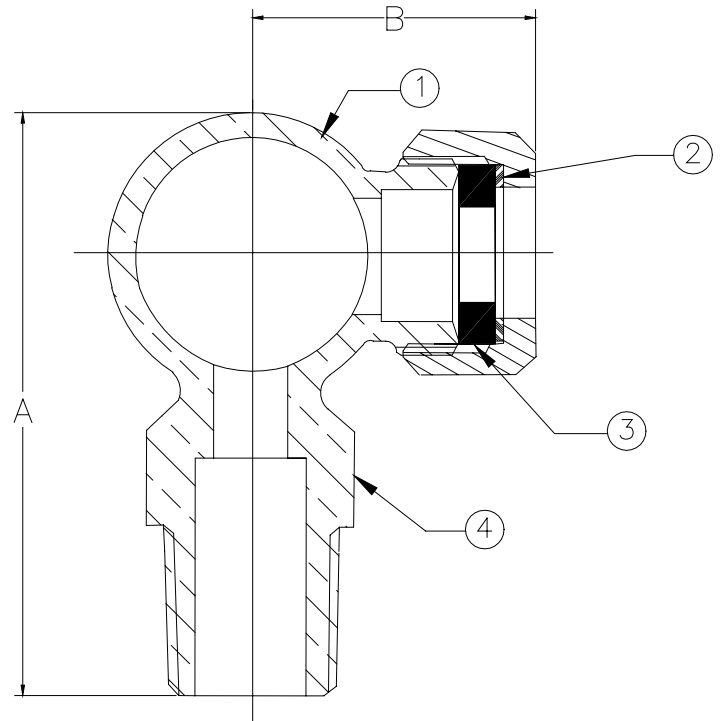
Model 910½” Upper Expansion Tank Fixture

250 WSP @ 406°F Max
400WOG
Bronze Body

MATERIAL LIST

NO.	DESCRIPTION	MATERIAL
1	Glass Washer Nut	Brass
2	Washer	Steel
3	Glass Washer	EPDM
4	Body	Bronze

Size	½”
A	2.81
B	1.47
Ship Wt. (lbs.)	0.44
Qty. Per Carton	12





UNITED BRASS WORKS, INC.
 714 S. Main St., Randleman, NC 27317
 Tel: 800-334-3035 Fax: 800-498-4696 www.ubw.com



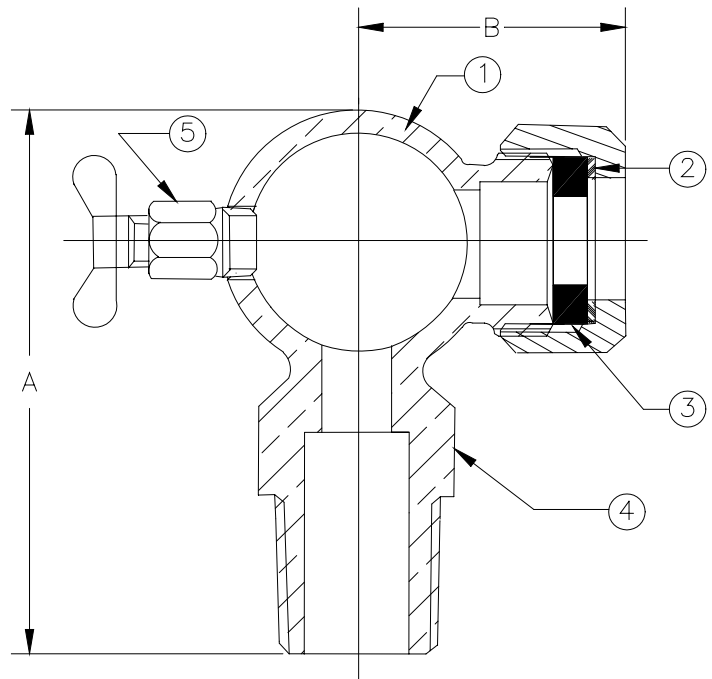
Model 911½” Lower Expansion Tank Fixture

**250 WSP @ 406°F Max
400WOG
Bronze Body**

MATERIAL LIST

NO.	DESCRIPTION	MATERIAL
1	Glass Washer Nut	Brass
2	Washer	Steel
3	Glass Washer	EPDM
4	Body	Bronze
5	Drain Cock	Steel

Size	½”
A	2.81
B	1.47
Ship Wt. (lbs.)	0.44
Qty. Per Carton	12





UNITED BRASS WORKS, INC.
 714 S. Main St., Randleman, NC 27317
 Tel: 800-334-3035 Fax: 800-498-4696 www.ubw.com



Model 34019 Expansion Tank Fixture Set

250 WSP @ 406°F Max

MATERIAL LIST

NO.	DESCRIPTION	MATERIAL
1	Upper Fixture	See Specs for 910
2	Protector Rods	Steel
3	Lower Fixture	See Specs for 911

* A To determine proper glass length, subtract 1 1/8" from center to center dimensions of the installed valves.

