



UNITED BRASS WORKS, INC.
714 S. Main St., Randleman, NC 27317
Tel: 800-334-3035 Fax: 800-498-4696 www.ubw.com

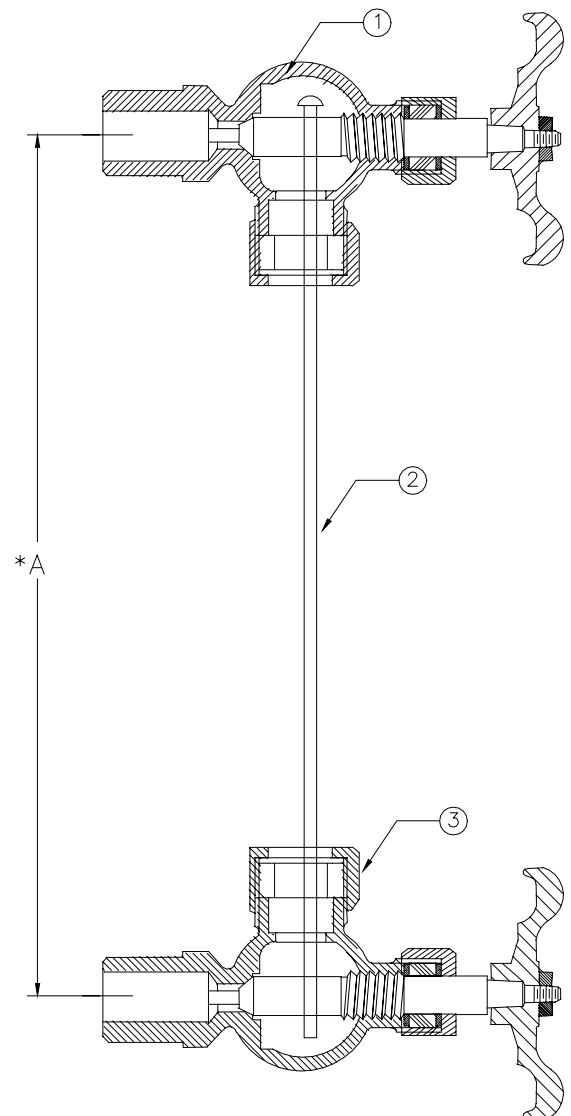


Water Gauge Fixture Sets

**250 WSP @ 406°F Max
400WOG**

AVAILABLE MODELS

- 34014 1/2" long Shank Set w/ Ball Check*
- 34014PW 1/2" Long Shank Set w/ Ball Checks & Plastic Hand Wheels*
- 34015 1/2" Short Shank Set w/ Ball Checks*
- 34015PW 1/2" Short Shank Set / Ball Checks & Plastic Hand Wheels*
- 34017 1/2" Long Shank Set*
- 34018 1/2" Short Shank Set*
- 34020 1/2" Long Shank Set w/ Plastic Hand Wheel*
- 34021 1/2" Long Shank Set Less Protector Rods*
- 34033 1/2" Short Shank Set Less Protector Rods*
- 34035 1/2" Short Shank Set w/ Ball Check Less Protector Rods*



**A To determine proper glass length,
subtract 1 1/8" from center to center
dimensions of the installed valves.*



UNITED BRASS WORKS, INC.
 714 S. Main St., Randleman, NC 27317
 Tel: 800-334-3035 Fax: 800-498-4696 www.ubw.com



Water Gauge Fixture Sets W/ Ball Valve for Blow Off

250 WSP @ 406°F Max
400WOG
Rising Stem

AVAILABLE MODELS

34011 1/2" Long Shank Set

34012 1/2" Short Shank Set

34013 1/2" Long Shank Set w/ Plastic Hand Wheels

34031 1/2" Short Shank Set w/ Ball Checks

34032 1/2" Long Shank Set w/ Ball Checks

*34036 1/2" Long Shank Set w/ Ball Checks
 & Plastic Hand Wheels*

*34038 1/2" Short Shank Set w/ Ball Checks
 & Plastic Hand Wheels*

**A To determine proper glass length,
 subtract 1 1/8" from center to center
 dimensions of the installed valves.*

