

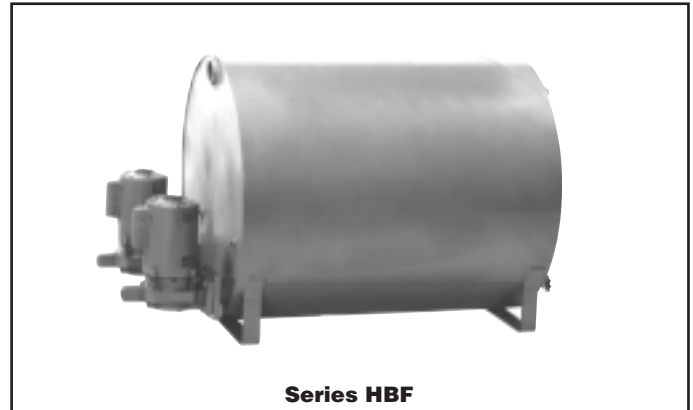
Boiler Feed Units (Stock)

Hoffman boiler feed units are used to return condensate to the boiler. Applications include residential, commercial, and industrial steam

heating, and industrial processing; dry cleaning plants, chemical refineries, wood pulp paper processing, textile mills, and manufacturing facilities.

Series HBF™

- For systems up to 27,800 sq. ft. EDR or up to 200 (149 kW) Boiler HP
- Includes steel receiver with HoffGuard™ corrosion resistant coating
- Available with pumps in simplex or duplex design
- Low height NPT inlet for easy return line piping
- Separate NPT connections provide a secondary vent for safe operation
- NPT drain connection
- Float operated internal water make-up water feeder
- 100% factory tested as a complete unit
- Includes water level gauge with protective brass rods and shut-off valves
- Optional equipment
 - Inlet basket strainer
 - Y-strainer
 - Control panels for wall mounting
- Pump seal maximum temperature 250°F (121°C)
- Pump maximum temperature 210°F (99°C)
- Built to order units for alternate duty point are available by special request (consult factory)



Series HBF

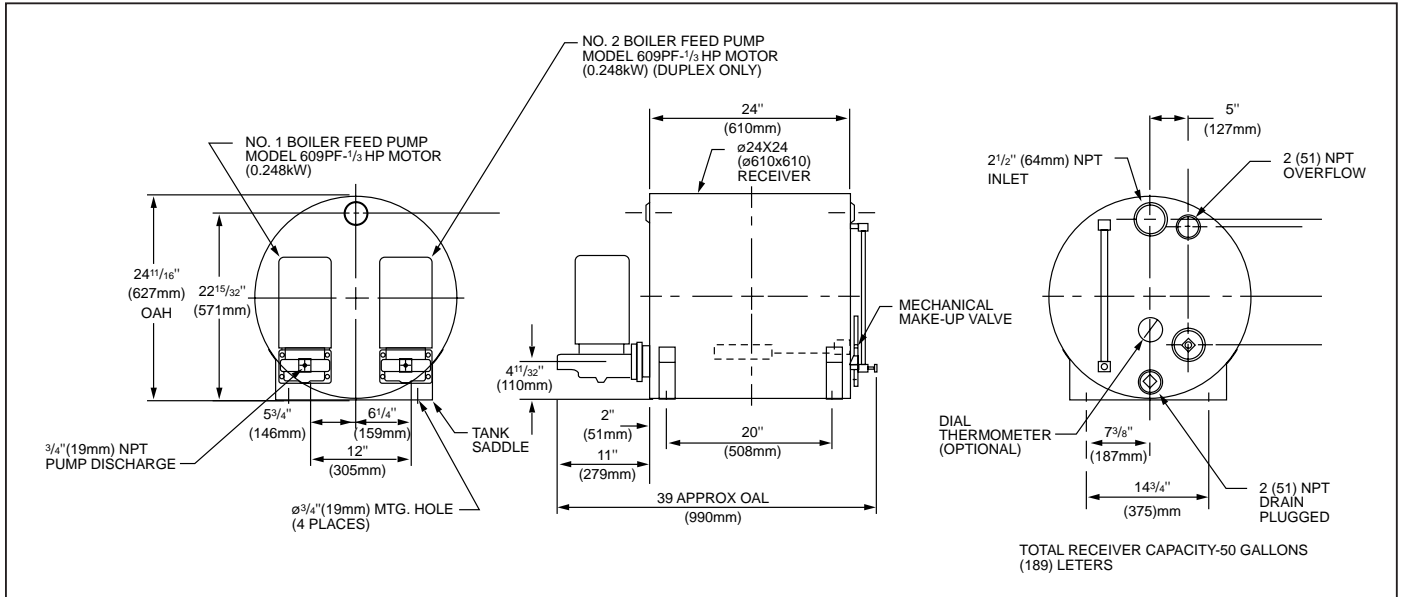
Ordering Information

Open drip proof motors only. Single phase, 60Hz, 115/230 volt.

Model Number	Part Number	Sq. Ft. EDR	Pumps	Boiler HP (kW)	Discharge Pressure	Pump Capacity	Motor		Receiver		
					PSIG (kPa)	GPM (LPS)	HP (kW)	Total Gal (Liters)	Storage Gal (Liters)	Storage Minutes	
50HBF-1520	161051	7,000	Simplex	50 (37)	20 (138)	15 (0.9)	1/3 (0.2)		50 (189)	39 (148)	11
	161052		Duplex			15 (0.9)					
100HBF-1520	161053	13,800	Simplex	100 (75)	20 (138)	15 (0.9)	1/3 (0.2)		100 (379)	83 (314)	11
	161054		Duplex			15 (0.9)					
100HBF-2030	161055	13,800	Simplex	100 (75)	30 (207)	20 (1.3)	3/4 (0.6)		100 (379)	83 (314)	11
	161056		Duplex			20 (1.3)					
200HBF-3020	161057	27,800	Simplex	200 (149)	20 (138)	30 (1.9)	1/2 (0.4)		200 (757)	172 (651)	12
	161058		Duplex			30 (1.9)					
200HBF-3030	161059	27,800	Simplex	200 (149)	30 (207)	30 (1.9)	1 (0.7)		200 (757)	172 (651)	12
	161060		Duplex			30 (1.9)					
200HBF-4020	161061	27,800	Simplex	200 (149)	20 (138)	40 (2.5)	1 (0.7)		200 (757)	172 (651)	12
	161062		Duplex			40 (2.5)					
200HBF-4030	161063	27,800	Simplex	200 (149)	30 (207)	40 (2.5)	1½ (1.1)		200 (757)	172 (651)	12
	161064		Duplex			40 (2.5)					

Dimensions, in. (mm)

Series HBF™ – 50 HP (37 kW)



Series HBF™ – 100 HP (75 kW) and 200 HP (149 kW)

