

Steel Tanks

WATER KING CARBON STEEL MINERAL TANKS

Our MF, HF and VN systems come with standard 100 psi, non-code, epoxy lined and coated, carbon steel pressure vessels. ASME code vessels with specific pressure ratings are available. Water King can also accommodate additional fittings or attachments to fit customer demands. Our steel tanks are made in the United States.

Standard Tank Part Numbers	
Size	Part Number
20" x 54"	100123-LC
24" x 54"	100124-LC
30" x 60"	100125-LC
36" x 60"	100127-LC
36" x 72"	100128-LC
42" x 72"	100129-LC
48" x 72"	100130-LC
54" x 72"	100131-LC
60" x 72"	100132-LC
66" x 72"	100133-LC
72" x 72"	100134-LC

Add C-XXX to indicate ASME Code
For example the number for a 36x72 lined and coated 150 psi ASME Code vessel would be 100128-LCC-150.



MINERAL TANK SPECIFICATIONS

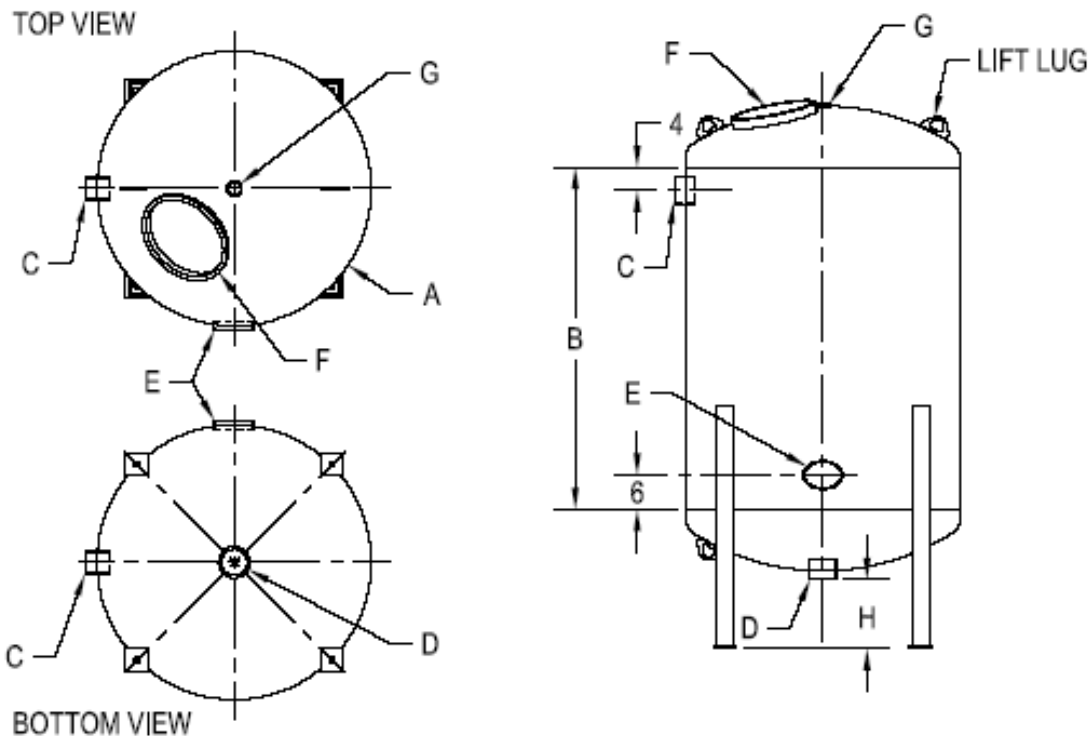
Mineral Tank (Standard Non Code Vessels)

The non-code vessel shall be A36 carbon steel or better rated at 100 psi working pressure designed to a factor of safety of 3.0. The inlet and outlet shall be 150 psi NPT full couplings. The inlet shall be in the side wall and the outlet shall be in the center of the tank bottom shell. Each tank shall have a top center fitting. Tanks 36" Ø and larger shall have lifting lugs. Tanks 20, 24, and 30" Ø inch tanks shall have a 4" x 6" handhole in the side shell and in the top head. Tanks 36" Ø and larger shall have a 11" x 15" or larger manway in the top head and an 4" x 6" handhole in the side shell.

Mineral Tank (ASME Code Vessels). Tanks shall be built to ASME code specifications by an ASME code manufacturer. Tanks shall bear the ASME code stamp. Tanks "built to ASME code but not stamped" shall not be acceptable as ASME code. An ASME U1A form shall be provided with each ASME code tank. Further documentation is available at additional cost if requested at the time of the order.

Lining and Coating. Tanks shall be prepared for internal coating with SSPC-SP5 White Metal blast cleaning. Prepare external coating with SSPC-SP6 Commercial blast cleaning. Internal lining shall be epoxy (TNEMEC Series 20HB Pota-Pox for tanks less than 1,000 gallons and TNEMEC Series 141 Pota-Pox 80 for tanks of 1,000 gallons and larger) and listed by NSF International to ANSI/NSF Standard 61. Prime coat shall be 3 - 5 mils followed a 4 - 6 mil topcoat. Exterior coatings shall be a 2 - 4 mils of red oxide alkyd primer or 4 - 6 mils of TNEMEC Series 161 Tnemec-Fascure epoxy. Coatings shall be applied according to manufacturer's recommendations. Paint reports and mil thickness reports shall be provided if requested at the time the tank is ordered. Water King standard color is white. Safety blue is also available.

CAT283.2



- NOTE: 1) 48"-72" DIAMETER TANKS ARE LINED AND PRIMED OR FINISH PAINTED ONLY.
 2) ANSI/NSF COATING LISTING APPLIES TO ALL GALVANIZED TANKS, AND 100 GALLONS AND LARGER, LINED TANKS.
 3) 36"-42" DIAMETER TANKS HAVE (2) LIFTING LUGS ON HEAD.
 4) 48"-72" DIAMETER TANKS HAVE (2) LIFT LUGS ON TOP AND (1) ON BOTTOM.
 5) 20"-42" DIAMETER TANKS HAVE (3) STRAP LEGS.
 6) 48"-72" DIAMETER TANKS HAVE (4) STRUCTURAL ANGLE LEGS AS SHOWN.

A DIAMETER	B SIDE SHELL	C & D COUPLING	E OPENING	F OPENING	G SPUD NPT	H DISTANCE
20", 24"	54", 60", 72"	2"	4" X 6"	4" X 6"	1-1/4"	6"
30"	54", 60", 72"	2"	4" X 6"	4" X 6"	1-1/2"	6"
36", 42"	60", 72"	3"	4" X 6"	11" X 15"	2"	9"
48"-72"	60", 72"	4"	4" X 6"	12" X 16"	2"	12"

MANWAY AND HAND HOLE COVERS AND GASKETS		
Size	Description	Part Number
4" x 6"	HAND HOLE COVER w/YOLK, NUT, BOLT & GASKET -	100113
11" x 15"	MANWAY COVER w/YOLKS, NUTS, BOLTS & GASKET -	100114
4" x 6"	GASKET	400614
11" x 15"	GASKET	400615