

Natural Companions from the Leader in Air Management

Air handlers and fan coils go hand-in-hand and Titus combines both in their product lineup.

Horizontal, Vertical, Modular and Rooftop air handler models can be combined with fan coils to fit every building design requirement. Fit individual rooms with fan coils and use Titus belt drive air handlers in the common areas. Air handlers provide greater airflow, increased static pressure and multi-row coil capability to serve the large open areas with greater efficiency.

Consider these air handler features:

- Four models with multiple model sizes for selection and installation flexibility.
- Nominal CFM ranges from 800 to 8000 depending on the model.
- Four and six-row cooling coils available.
- One and two-row heating coils in preheat or reheat configuration.
- Wide variety of optional features including face and bypass dampers, mixing boxes, and electric heat.

And these fan coil features:

- Pressurized water system guaranteeing leak-free arrival at the job site.
- Double layer condensate pan for durability, clean-ability, and sealed from construction dust on vertical stack units.
- Adjustable flanges for sheet rock thickness on vertical stack.
- Individually sized, field-installed riser extensions eliminate field fabrication, saving freight and labor costs.
- Quiet operation substantiated by sound tests performed according to ARI 260/350.

Couple these features with knowledgeable and responsive sales reps, open-minded design approach and solid software applications. You owe it to your clients to give Titus a second look.

For more information, Contact: TITUS

990 Security Row
Richardson, TX 75081
972-699-1030
Fax: 972-680-1971
www.titus-hvac.com

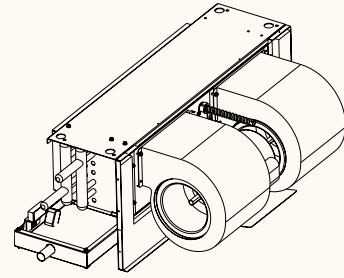
**Titus**
The Leader in Air Management



E' mBnkT nst

Gndynms' kRdqdr

- Models: HBC Concealed, HBP w/Plenum, HBE Exposed, HBR Recessed
 - Sizes: 200 – 1200 CFM with 2- to 5-row coils
 - Removable panel for access to fans, piping and electrical components
 - HBP can be provided with either a horizontal or vertical filter slide
- ᠢ Gif g nt sot sr dqdr `u` lk ald enql t lshqnl `oohb` snmr



Udqfb' kRdqdr

- Models: VBC Concealed, VBF Flat Top, VBA Angled Top, VBL Low Profile
 - Sizes: 200 – 1200 CFM with 2- to 5-row coils
- ᠢ Gif g nt sot st nst `u` lk ald enql t lshqnl `oohb` snmr

Udqfb' kRs' bj Rdqdr

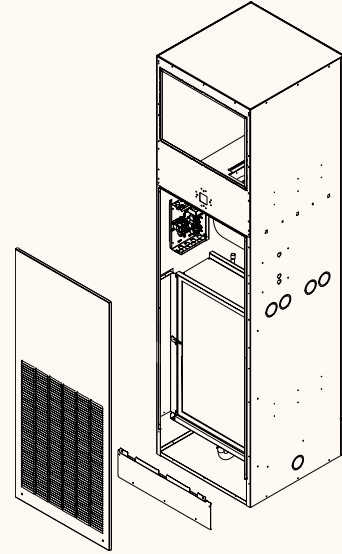
- Models: VSR Recessed, VSM Master, VSS Slave
- Sizes: 300 – 1200 CFM with 2- to 5-row coils
- Incorporates many standard features that are optional on other series

All units are pressurized with air to ensure that the unit arrives at the job site with no leaks.

@qG' nckdqT nst

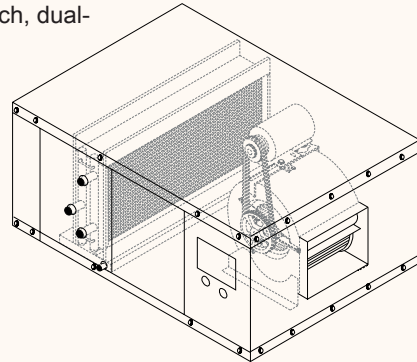
Gndynms' k@qG' nckdqRdqdr

- Model HAB
- Sizes: 800 – 8000 CFM with 4-row coils, 6-row optional
- Cabinet is heavy gauge galvanealed steel, specially coated inside and outside with beige powder-coated enamel paint, and lined with 1-inch, dual-density, 1.5-pound fiberglass insulation with antimicrobial coating



Udqfb' k@qG' nckdqRdqdr

- Model VAB
- Sizes: 800 – 4000 CFM with high efficiency 4-row coils
- Large, easy to remove front access panel
- Options: 2-row hot water coils, motors 115/60/1 – 230/460/60/3

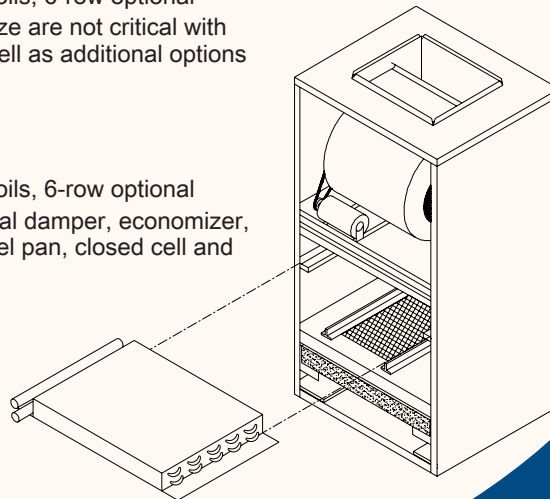
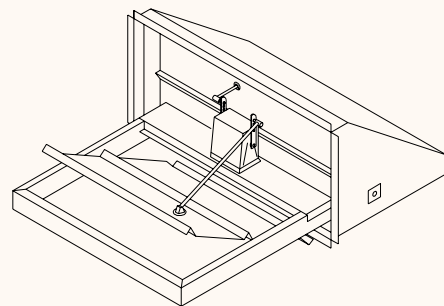


L nct k q@qG' nckdqRdqdr

- Model MAB
- Sizes: 800 – 8000 CFM with 4-row coils, 6-row optional
- Utilize where footprint and cabinet size are not critical with requirements for more capacity as well as additional options

Qnneso @qG' nckdqRdqdr

- Model RAB
- Sizes: 800 – 8000 CFM with 4-row coils, 6-row optional
- Options: Horizontal discharge, manual damper, economizer, double wall, roof curbs, stainless steel pan, closed cell and IAQ liner, 1 or 2-row hot water coils



Represented
by: