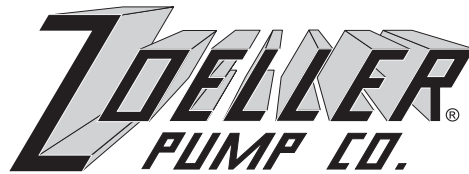


*"QUALITY PUMPS SINCE 1939"*

Product information presented here reflects conditions at time of publication. Consult factory regarding discrepancies or inconsistencies.

<http://www.zoeller.com>



SECTION: 6.10.340

FM0496

0901

Supersedes

1197

MAIL TO: P.O. BOX 16347 • Louisville, KY 40256-0347  
 SHIP TO: 3649 Cane Run Road • Louisville, KY 40211-1961  
 (502) 778-2731 • 1 (800) 928-PUMP • FAX (502) 774-3624

## REPLACEMENT PARTS LIST FOR MODELS:

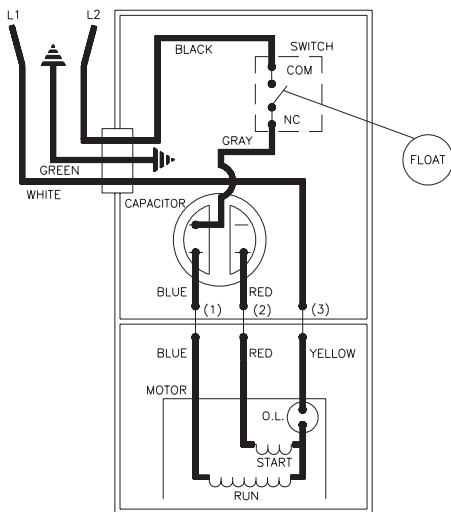
**M282 AUTOMATIC 115V**  
**D282 AUTOMATIC 230V**  
**N282 NONAUTOMATIC 115V**  
**E282 NONAUTOMATIC 230V**

Consult factory for all other models

### TO ORDER REPLACEMENT PARTS:

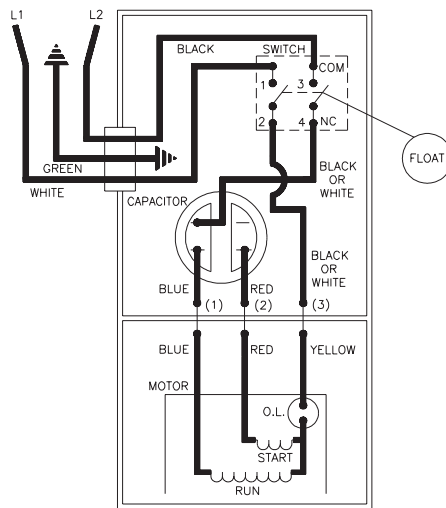
PLEASE FURNISH THE FOLLOWING INFORMATION:

- Model Number.
- Part Number of Pump.  
(If manufactured prior to June 1988, give 2 letter date code following Model No.)
- Part Number and Description of part.



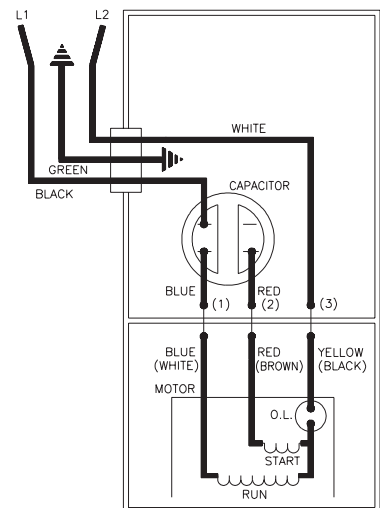
002390

WIRING DIAGRAM FOR MODELS  
 "M282-A" and "D282-A"  
 11/81 (XM) thru 8/86 (US)



004621

WIRING DIAGRAM FOR MODELS  
 "M282-B", "M282-C" and "D282-B", "D282-C"  
 9/86 (VS) thru Current



002397A

WIRING DIAGRAM FOR MODELS  
 "N282-A", "N282-B" and "N282-C"  
 "E282-A", "E282-B" and "E282-C"  
 11/81 (XM) to Current

**REPLACEMENT PARTS LIST FOR MODELS "M282" and "D282".** See back page for "M282" AND "D282" illustration.

MODELS: M282-A M282-B M282-C						D282-A D282-B D282-C					
REF. NO.	DESCRIPTION	QTY	NOTES	11/81 XM thru 8/86 US	9/86 VS thru 12/92	1/93 thru Current	11/81 XM thru 8/86 US	9/86 VS thru 12/92	1/93 thru Current		
1	Case Switch & Cd	1	2,4	003164	004757	004757					
2	• Guard	1		001023	001023	001023	004759	004759	004759		
3	Case-Mach	1	2,4	004757	004614	004614	001023	001023	001023		
4	• Arm & Seal Asm	1	2	002379	004745	004745	004759	004614	004614		
5	• Gasket, Case/Cover	1		001011	001011	001011	002379	004745	004745		
6	Switch Asm "282"	1	2	002380	004755	004755	001011	001011	001011		
7	Lead Wire (Gray)	1		002609	NA	NA	002380	004755	004755		
8	• Wire Pkg (2)Wires	1		003165	004756	004756	002609	NA	NA		
9	Relay	1		NA	NA	NA	003165	004756	004756		
10	Capacitor & Clamp Asm 20uf	1		002381	002381	002381	NA	NA	NA		
11	Float, Plastic	1		094039	094039	094039	002381	002381	002381		
12	Guide Asm, Flt Rod	1		094048	094048	094048	094039	094039	094039		
13	Rod Asm, Flt	1		001043	001043	001043	094048	094048	094048		
14	Housing, Mtr-&Str "282"GE	1	1,3	003166	003166	003166	001043	001043	001043		
15	Housing, Mtr-&Str "282"EMD	1	1,3	005539	005539	005539	003172	003172	003172		
16	Bearing, Sleeve	1		001012	001012	001012	006091	006091	006091		
17	• Handle	1		217069	217069	217069	001012	001012	001012		
18	Cord Term & Seal	1	2,4	217049	094071	094071	217069	217069	217069		
19	• Clamp, Strain Relief	1	4	001770	001770	001770	217043	094072	094072		
20	• Seal, Cord-Asm & Strain Relief	1	4	094032	094032	094032	001770	001770	001770		
21	• Plug, Test-White	2		034090	034090	034090	094032	094032	094032		
22	• Seal, Thru Wall Term	3		003402	003402	003402	034090	034090	034090		
23	Rotor & Brg 115/230V "282" GE	1	3	003167	003167	007978	003402	003402	003402		
24	Rotor & Brg 115/230V "282" EMD	1	3	005540	005540	007979	003167	003167	007978		
25	• Bearing, Lower Rotor	1		094106	094106	001013	005540	005540	007979		
26	• Seal, Mtr Hsg	1		001014	001014	001014	094106	094106	001013		
27	• Oil, Dielectric (44 Oz Can)	1		003168	003168	003168	001014	001014	001014		
28	Adapter-Mach "280"	1		002357	002357	001003	003168	003168	003168		
29	• Seal, Shaft "282", "284"	1		002946	002946	002946	002357	002357	001003		
30	Flange Pkg 2"NPT	1		217024	217024	217024	002946	002946	002946		
31	Flange Pkg 3"NPT	1		317024	317024	317024	217024	217024	217024		
32	Impeller "282"	1		002998	002998	002998	317024	317024	317024		
33	Housing, Pump-Mach	1		217012	217012	217012	002998	002998	002998		
34	• Screw, #10-24 X.375 RHM-SI SS	2		001883	001883	001883	217012	217012	217012		
35	• Screw, #6-32x.25RHM SI Tc Stlgr	4		001877	001877	001877	001883	001883	001883		
36	• Screw, .25-20 X .75 HHM-SS	4		001916	001916	001916	001877	001877	001877		
37	• Screw, #6-32x.438Rhsstp"1"Stlzi	2		001877	004644	004644	001916	001916	001916		
38	• Screw, .5-13 X 2 HH Cap-SS	2		001909	001909	001909	001877	004644	004644		
39	• Washer, SS-1.25"Odx.562"Idx.078	2		002115	002115	002115	001909	001909	001909		
40	• Screw, .313-18 X 1"HH Cap-SS	4		002608	002608	002608	002115	002115	002115		
41	• Screw, 25-20X1" HHm-SS	4		007790	007790	007790	002608	002608	002608		
42	Rebuild Kit "280"	1		003170	004758	007980	007790	007790	007790		
							003170	004758	007980		

• Items included in Rebuild Kit.      □ Not shown in illustration.

**NOTES:**

- 1) Mtr. Hsg., Brg., Stator & Term. (Item 13) are preassembled at the factory and must be replaced as a unit. Stator is permanently attached to the Motor Housing. Plug (Item 19); Seal, Thru Wall Term. (Item 20) and Bearing - Upper (Item 14) are replaceable.
- 2) When ordering these parts, customer must identify if switch is a General Electric switch.
- 3) When ordering Motor Housing, Bearing, Stator and Term. (Item 13) or Rotor (Item 21) specify either GE or Emerson motor. GE motor can be identified by (4) holes spaced at 90° around the outside diameter of the stator. Emerson motor can be identified by (4) flat edges spaced at 90° around the outside diameter of the stator.
- 4) If an "X" follows Model No., or Date Mfg. on brass ID tag, consult factory for ordering any parts.
- 5) See FM0160 Parts Price Sheet for listing of parts prices.
- 6) "NA" indicates, not applicable.

DATE CODE OF MANUFACTURE FROM 12/70 to 12/88				
1st LETTER MONTH		2nd LETTER YEAR		
M — JAN.	T — JULY	A — 1971	G — 1977	O — 1983
N — FEB.	U — AUG.	B — 1972	H — 1978	P — 1984
O — MARCH	V — SEPT.	C — 1973	I — 1979	R — 1985
P — APRIL	W — OCT.	D — 1974	J — 1980	S — 1986
R — MAY	X — NOV.	E — 1975	M — 1981	T — 1987
S — JUNE	Y — DEC.	F — 1976	N — 1982	U — 1988

**NOTE:** Four digit (MMYY) date of mfg. used after June, 1988.  
IE: MMYY = 0192 = Jan. 1992.

**REPLACEMENT PARTS LIST FOR MODELS "N282" and "E282".** See back page for "N282" AND "E282" illustration.

REF. NO.	DESCRIPTION	QTY	NOTES	MODELS:								
				N282-A	N282-B	N282-C						
				11/81 XM thru 8/86 US	9/86 VS thru 12/92	1/93 thru Current						
1	Cover & Cord 115V/1Ph "282"	1	3	003173	003173	003173				003174	003174	003174
2	Cover-Mach	1	3	001077	001077	001077				001077	001077	001077
3	Gasket, Case/Cover	1		001011	001011	001011				001011	001011	001011
4	Wire Pkg (2)Wires	1		003165	004756	004756				003165	004756	004756
5	Capacitor & Clamp Asm 20uf	1		002381	002381	002381				002381	002381	002381
6	Housing, Mtr-&Str "282" GE	1	1,2	003166	003166	003166				003172	003172	003172
7	Housing, Mtr-&Str "282" EMD	1	1,2	005539	005539	005539				006091	006091	006091
8	Bearing, Sleeve	1		001012	001012	001012				001012	001012	001012
9	Handle	1		217069	217069	217069				217069	217069	217069
10	Cord Term & Seal Asm	1	3	003617	003617	003617				003618	003618	003618
11	Clamp, Strain Relief-Red	1	3	001770	001770	001770				001770	001770	001770
12	Seal, Cord-Asm & Strain Relief	1	3	094032	094032	094032				094032	094032	094032
13	Plug, Test-White	2		034090	034090	034090				034090	034090	034090
14	Seal, Thru Wall Term	3		003402	003402	003402				003402	003402	003402
15	Rotor & Brg 115/230V "282" GE	1	2	003167	003167	007978				003167	003167	007978
16	Rotor & Brg 115/230V "282" EMD	1	2	005540	005540	007979				005540	005540	007979
17	Bearing, Lower Rotor	1		094106	094106	001013				094106	094106	001013
18	Seal, Mtr Hsg	1		001014	001014	001014				001014	001014	001014
19	Oil, Dielectric-(44 Oz Can)	1		003168	003168	003168				003168	003168	003168
20	Adapter-Mach "280"	1		002357	002357	001003				002357	002357	001003
21	Seal, Shaft "282", "284"	1		002946	002946	002946				002946	002946	002946
22	Flange Pkg 2"NPT	1		217024	217024	217024				217024	217024	217024
23	Flange Pkg 3"NPT	1		317024	317024	317024				317024	317024	317024
24	Impeller "282"	1		002998	002998	002998				002998	002998	002998
25	Housing, Pump-Mach	1		217012	217012	217012				217012	217012	217012
26	Screw, #6-32x.25RHM SI Tc Stlgr	3		001877	001877	001877				001877	001877	001877
27	Screw, #10-24 X.375 RHM-SI SS	2		001883	001883	001883				001883	001883	001883
28	Screw, .25-20 X.75 HHm-SS	4		001916	001916	001916				001916	001916	001916
29	Screw, .5-13 X 2 HH Cap-SS	2		001909	001909	001909				001909	001909	001909
30	Washer, SS-1.25"Odx.562"ldx.078	2		002115	002115	002115				002115	002115	002115
31	Screw, .313-18 X 1" HHm-SS	4		002608	002608	002608				002608	002608	002608
32	Screw, .25-20X1" HHm-SS	4		007790	007790	007790				007790	007790	007790
33	Rebuild Kit "280"	1		003170	004758	007980				003170	004758	007980

• Items included in Rebuild Kit.      ✖ Not shown in illustration.

**NOTES:**

- 1) Mtr. Hsg., Brg., Stator & Term. (Item 6) are preassembled at the factory and must be replaced as a unit. Stator is permanently attached to the Motor Housing. Plug (Item 12); Seal, Thru Wall Term. (Item 13) and Bearing - Upper (Item 7) are replaceable.
- 2) When ordering Motor Housing, Bearing, Stator and Term. (Item 6) or Rotor (Item 14) specify either GE or Emerson motor. GE motor can be identified by (4) holes spaced at 90° around the outside diameter of the stator. Emerson motor can be identified by (4) flat edges spaced at 90° around the outside diameter of the stator.
- 3) If an "X" follows Model No., or Date Mfg. on brass ID tag, consult factory for ordering any parts.
- 4) See FM0160 Parts Price Sheet for listing of parts prices.
- 5) "NA" indicates, not applicable.



<http://www.zoeller.com>

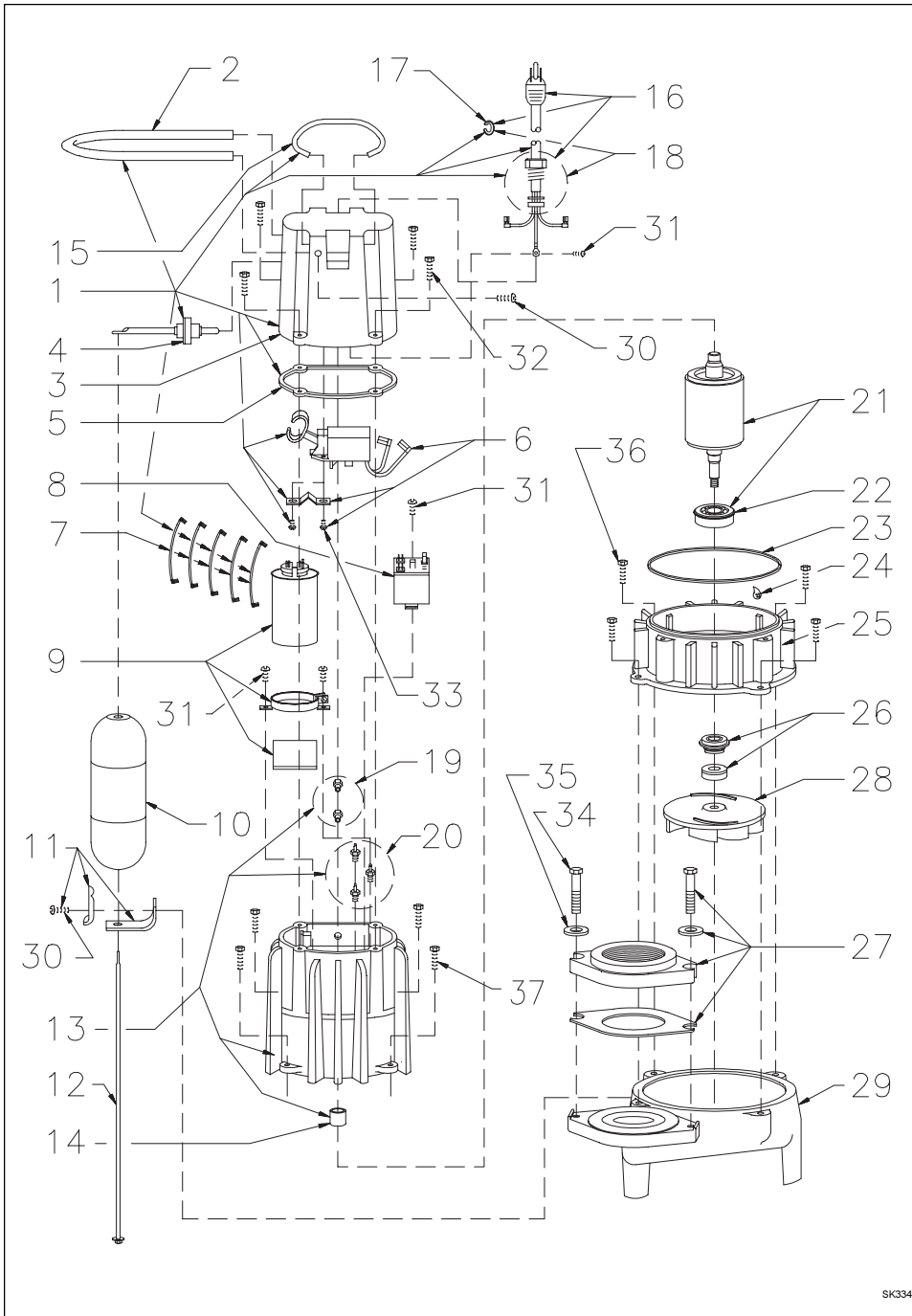


MAIL TO: P.O. BOX 16347  
Louisville, KY 40256-0347  
SHIP TO: 3649 Cane Run Road  
Louisville, KY 40211-1961  
(502) 778-2731 • 1 (800) 928-PUMP  
FAX (502) 774-3624

Manufacturers of . .

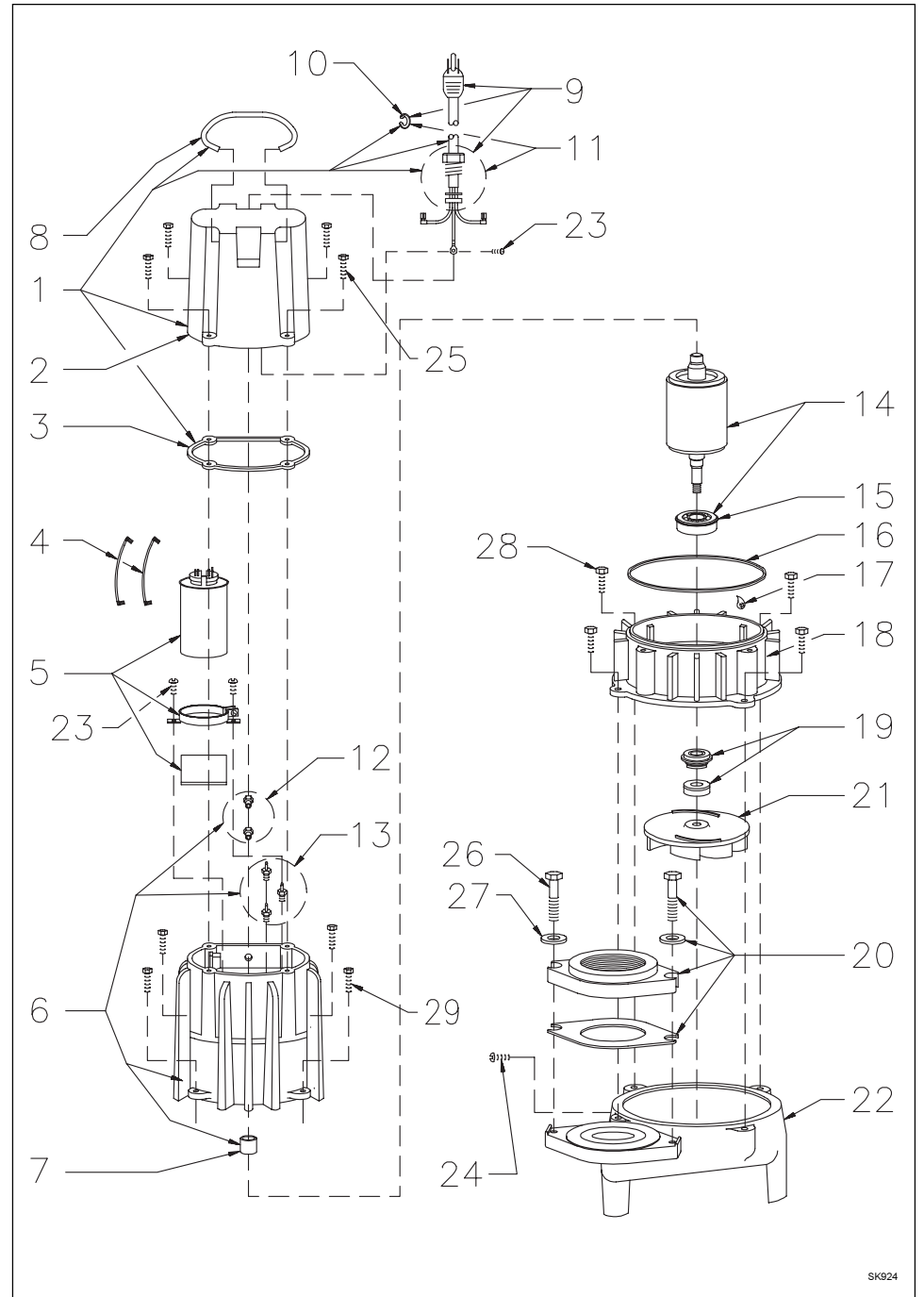
*"QUALITY PUMPS SINCE 1939"*

REPLACEMENT PARTS ILLUSTRATION FOR MODEL "M282" and "D282"



SK334

REPLACEMENT PARTS ILLUSTRATION FOR MODEL "N282" and "E282"



SK924