

&

BUILD

Z

**Fulton - Your Single Source
One Stop Shop for Custom
Pre-piped, Skid Mounted
Boilers and Accessories**

Complete skids from Fulton will
save a tremendous amount of time,
money and aggravation

G



S

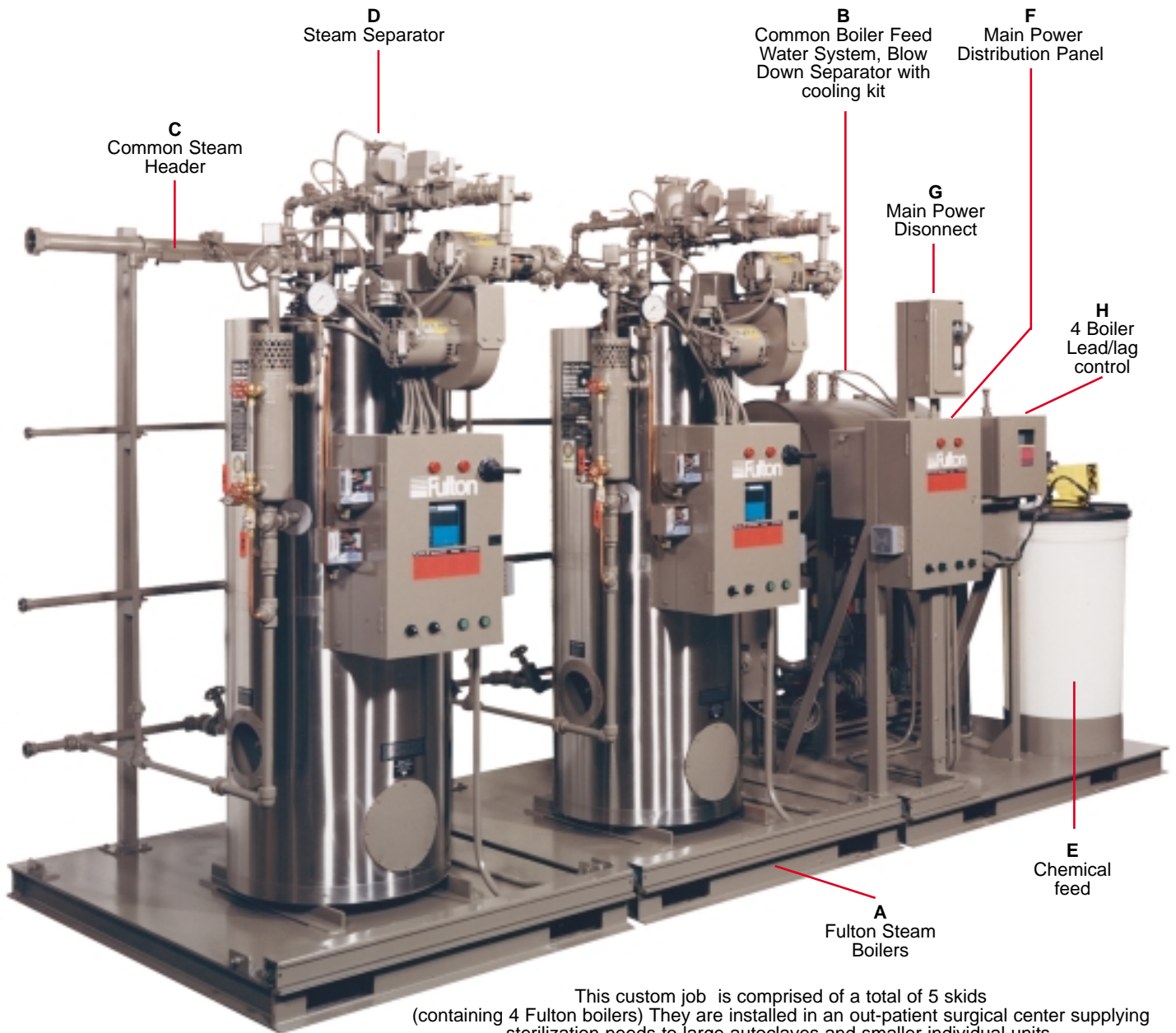
E

D



This skid unit used
for equipment testing in the
food, chemical, and pharmaceutical
processes is detailed on back cover.

 **Fulton**[®]
Fulton Boiler Works, Inc.



This custom job is comprised of a total of 5 skids (containing 4 Fulton boilers) They are installed in an out-patient surgical center supplying sterilization needs to large autoclaves and smaller individual units. The boilers are clad in polished stainless steel.

Fulton's Single Source, One Stop Shop Saves TIME

It's that simple. Tell us what your customer needs are. One boiler, Two? Three? More? Steam separators, condensate return systems, chemical treatment, and water softener systems? Do you need one skid? Two? Four?

Our engineering, drafting, and manufacturing capabilities can build just about anything around a customer's needs.

Fulton's One Stop Shop Saves MONEY

When engineering and drafting complete their internal work, we as your single source fabricator order every piece of equipment required. We do the shopping and the buying using our 50 years in-the-business experience to pass along the savings to you.

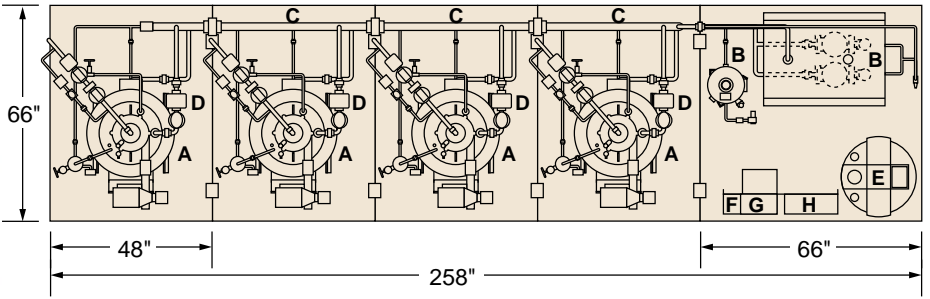
And, where you start to save even more time and money is in the field!

Your skid(s) can have common steam main headers, and state of the art controls operating all equipment including lead/lag control for multiple boilers.

You can make your contractor's day. After the skids are set in place he can hook up utilities—water, fuel, electrical, and the process equipment. It's, in a sense, another turn-key operation for him.

No Aggravation With Fulton's One Stop Shop

No need to spend valuable time shopping for individual equipment or waiting for that "one last piece". No shipping parts to Fulton. Easy hook-up in the field. Get your customer running within hours.



Fulton Custom Skids Are Found In Many Various Industries

We've built complete stainless boilers and accessories for the food processing, chemical, and pharmaceutical industries. We've built ultra high pressure units, super heaters, and hydronic equipment for skids.

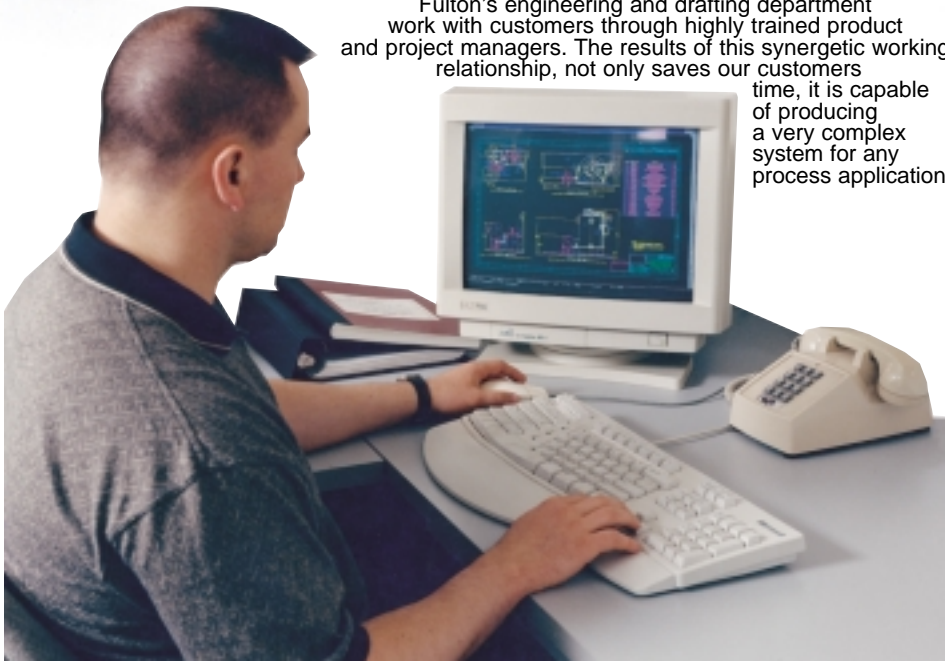


More and more major hospitals are finding it feasible to strategically locate their sterilization needs.

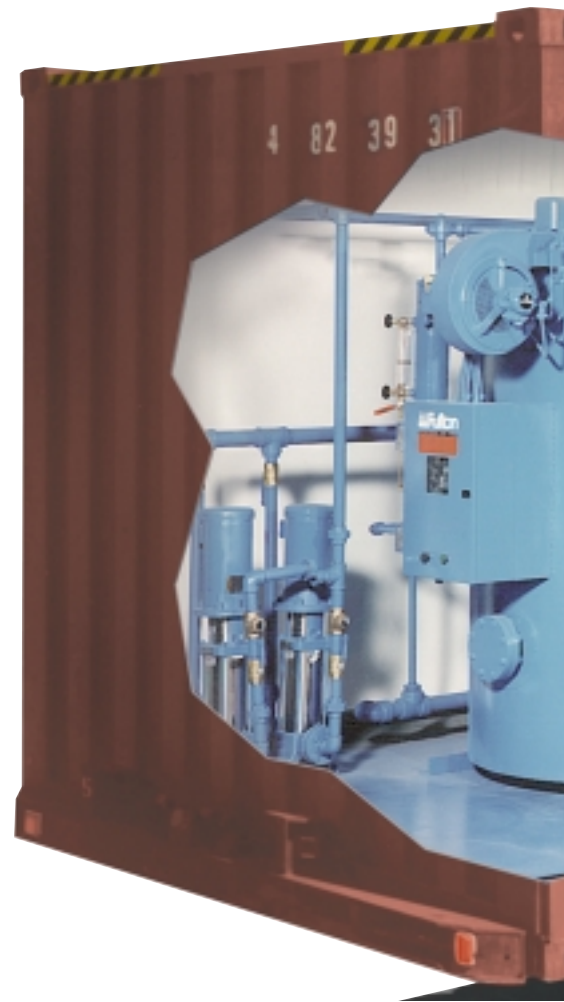


In today's urban sprawl major medical complexes and hospital clinics utilize Fulton custom skids.

Fulton's engineering and drafting department work with customers through highly trained product and project managers. The results of this synergetic working relationship, not only saves our customers time, it is capable of producing a very complex system for any process application.



This "standard" prepped skid is 132" x 66" and has a 20 HP gas fired steam boiler, vertical feed water tank and pump, blow down separator, water softening system and chemical feed unit. As the process line moves, so can the skid.

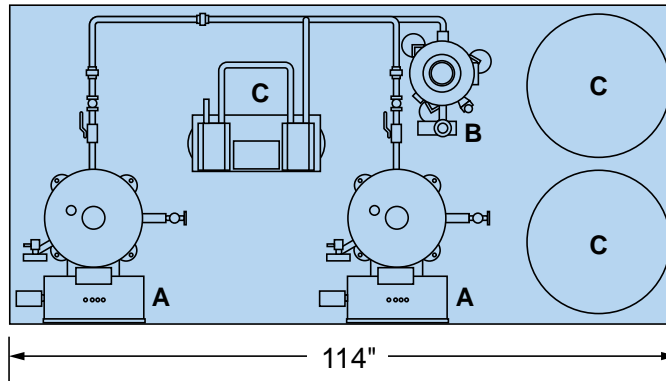




This skid contains two 5 KW electric total stainless steel, high pressure boilers, a blow down separator with cooling kit, and a special deionized water system.

Fulton Custom Skids Can Be “Moved” Economically

These individual packages can go through relatively small openings at the site, and then fastened together into a complete system for use with a food line, or sterilization needs or for use with air make up systems.



- A - Stainless boilers
- B - Blow down with cooling kit
- C - Deionized water system

Portable units are not uncommon to Fulton. This container houses four 40 HP boilers, a common feedwater and blow down system, completely piped and wired with single point electrical for quick on site hook up.



Prepiped Skids Can Be Moved To Another Location

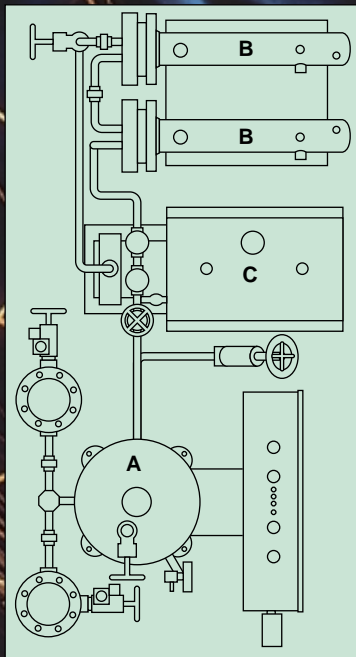
It's the same as re-arranging a room. Processing and/or product changes occur, plant expansion may take place, or the entire plant may be moved!

In a building complex, skids make more sense than one large unit.

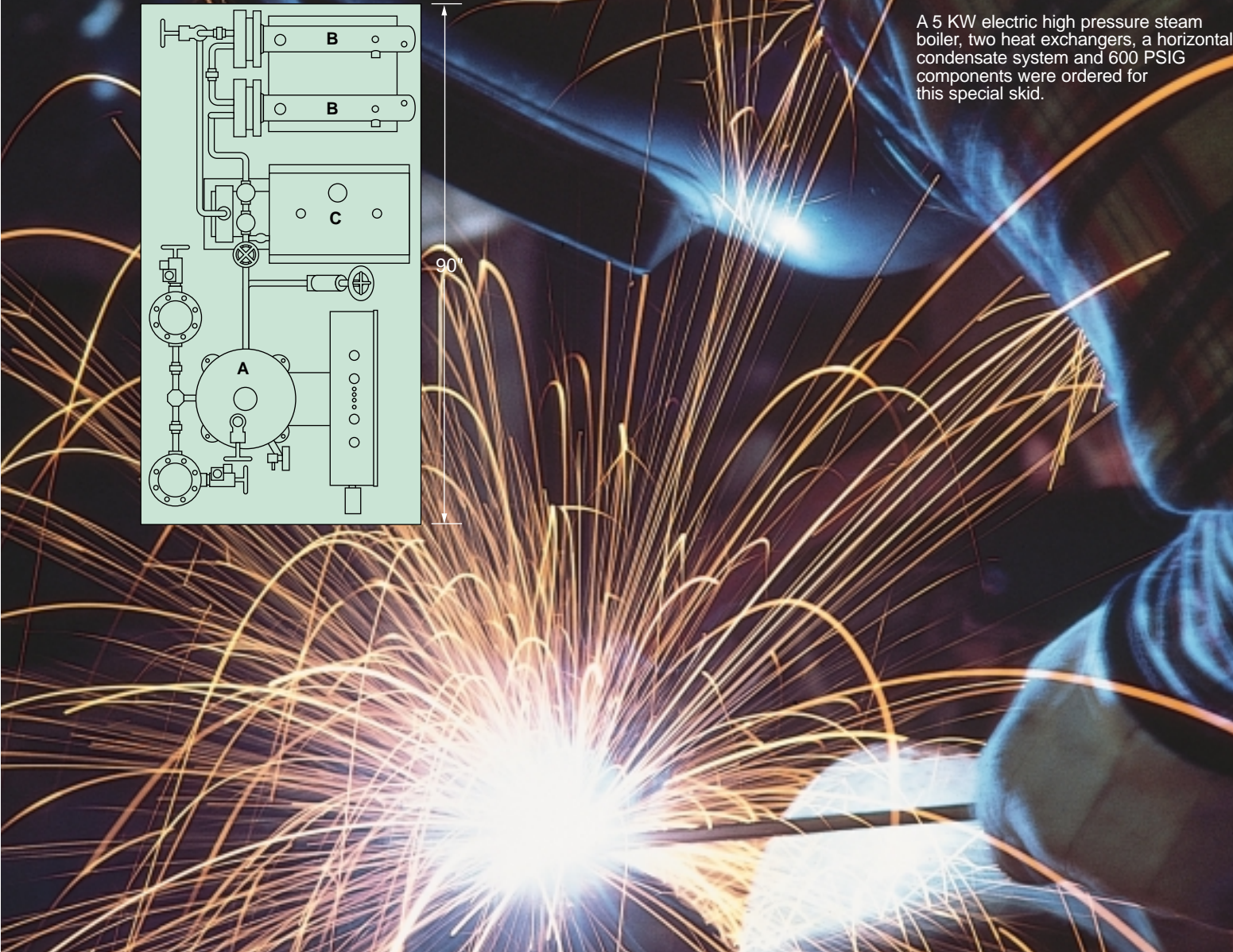
Back up boilers keep production going.



- A - Electric Boiler
- B - Heat Exchangers
- C - Condensate Return System



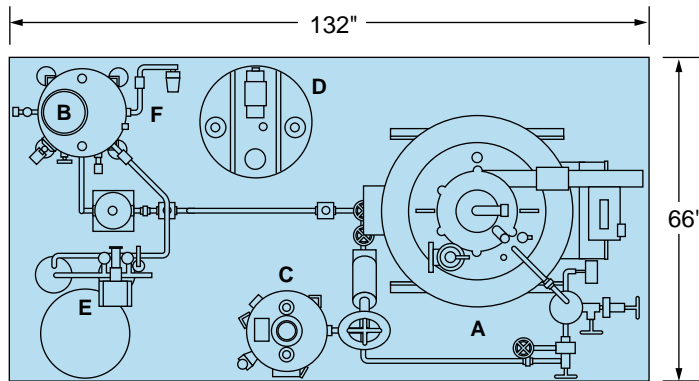
A 5 KW electric high pressure steam boiler, two heat exchangers, a horizontal condensate system and 600 PSIG components were ordered for this special skid.



When You Want The Complete Skid Call Fulton Boiler Works, Inc.

Everything is built on the factory floor, piped, wired completely, and shipped within a few weeks from order, and that does save time, money and aggravation.

This skid was designed to test pressure ratings for high quality valves and fittings used in the manufacture of chemical, pharmaceutical, and food products. The customer even specified the skid colors.



A High pressure (350 PSI) gas fired 20 HP steam boiler

D Chemical feed unit (tank)

B Vertical condensate return system and pump

F Preheat kit

E Water softener system including the water softener brine tank

C Blow down separator



The Entire Fulton Boiler is a UL Listed Packaged Boiler.
4-60 HP CSA Approved.

All Fulton Equipment is Built/Certified in Accordance to ASME Boiler and Pressure Vessel Code

Fuel Trains and Controls Comply to CSD-1

Fulton Boiler Works, Inc.



3981 Port St., Box 257
Pulaski, New York USA 13142
Call 315-298.5121
Fax 315-298.6390
email: info@fulton.com
web site: www.fulton.com

**Fulton Boiler Works, Inc.
Fulton Thermal Corporation**

Fulton Boiler Works, Inc. & Fulton Thermal Corporation are part of the Fulton Group of Companies, manufacturers of high grade industrial/commercial heat transfer products.

D&B
4M PP 01/02
Printed in USA
1Z-05891
41529D