



A Tomkins Company

# FAN COIL PRODUCT LINE



We provide the HVAC Industry  
with a wide range of high quality products:

**Fan Coil Units**  
**Custom Built Units**  
**Replacement Coils**

Products Designed and Engineered for a Variety of Applications:

- ◆ Apartments and Condominiums
- ◆ Hotels and Motels
- ◆ Schools and Universities
- ◆ Hospitals and Nursing Homes

Customer Service and Quality Assurance employees are completely dedicated to providing you with quality equipment known the world over for its ruggedness and durability. Our staff prides itself for its attention to detail and this highly personalized service.

In a well-equipped laboratory, engineers and technicians are continually monitoring performance characteristics.

Computer simulation programs are utilized to design non-standard units to meet specific requirements.

**Compliance with ANSI/UL 1995 Listed**



**Fire wall compliance with ANSI/UL 1479**

**ARI certified to standard 440**



## OUR PRODUCTS ARE RUGGEDLY BUILT AND INCLUDE THE FOLLOWING FEATURES:

|                          |  |
|--------------------------|--|
| <b>CASING/CABINET</b>    | Standard units are constructed from heavy gauge, zinc coated, phosphate treated steel. Exposed cabinets are finished with an attractive, powder-coated, oven-baked, electrostatically applied paint. Cabinets and plenums are lined with fiberglass for thermal and sound insulation.  |
| <b>ACCESS</b>            | Designs incorporate hinged and removable panels for easy access to fans, piping and electrical compartments.   |
| <b>FILTERS</b>           | Throw-away or washable filters available for all cabinet and plenum models.  |
| <b>COILS</b>             | We provide high efficiency coils, fabricated from copper tubing with mechanically bonded aluminum fins. Smooth wall tubing for chilled and hot water applications, and air vents are standard on all coils.  |
| <b>FANS &amp; MOTORS</b> | High efficiency, low revolution, centrifugal forward-curved wheels ensure the lowest sound levels even in high speed. Highly efficient, 3-speed, Permanent Split-Capacitor motors are standard. All motors are provided with an automatic reset thermal-overload protection system. Fans and motors are statically & dynamically balanced and mounted on a removable deck for easy maintenance. Quick disconnect switch is optional. |
| <b>ELECTRIC HEATERS</b>  | Electric heaters are a common option as a supplement or in lieu of coil-based heating. All heaters are factory-mounted with an automatic reset, thermal cut-out and a contactor.   |
| <b>VOLTAGE</b>           | Power voltage of 115V is standard with optional 208V, 230V & 277V. Control voltage is normally 24V or 115V.  |
| <b>POWER CONNECTION</b>  | All electrical components are factory-wired in accordance with ANSI/UL 1995 and NEC codes. An electrical box is provided for termination of all field wiring.  |
| <b>CONTROLS</b>          | Numerous piping arrangements, valve packages and control configurations are available to accommodate any project requirements.   |
| <b>QA/QC</b>             | Each unit undergoes stringent mechanical and electrical testing procedures before being released for shipment.   |
| <b>CUSTOM DESIGN</b>     | To meet special requirements, units may be manufactured with non-standard dimensions, and/or incorporate optional instrumentation or fittings.   |
| <b>TITUS WARRANTY</b>    | All Titus equipment is covered by the standard 1-year Warranty.  |

**HORIZONTAL BASIC SERIES**

*NOMINAL CAPACITIES 200 through 1200 CFM; 6,000 through 36,000 BTU/H*



**HBC CONCEALED CEILING**

**HBC**

The HBC is a horizontal discharge hideaway fan coil unit designed for fully concealed installation. Specific features include:

- ◆ Low silhouette styling ideally suited for a drop-ceiling or over-closet application in hotels, motels and apartment buildings.
- ◆ Open construction for easy access, even in the most confined spaces.



**HBP CONCEALED w/PLENUM**

**HBP**

The HBP is similar to the HBC Series except for a fiberglass-lined plenum enclosing the fan section. Specific features include:

- ◆ Adaptability to ducted return and outside air systems.
- ◆ Bottom or rear return with optional filter.



**HBE EXPOSED CABINET UNIT**

**HBE**

The HBE is a cabinet unit suited for exposed, under-ceiling mounting. Specific features include:

- ◆ Hinged bottom panel with removable filter provides easy control and maintenance access.
- ◆ Excellent sound attenuation is assured by the fiberglass-lined cabinet.
- ◆ Stamped grilles are standard, optional aluminum double-deflection grilles are available.



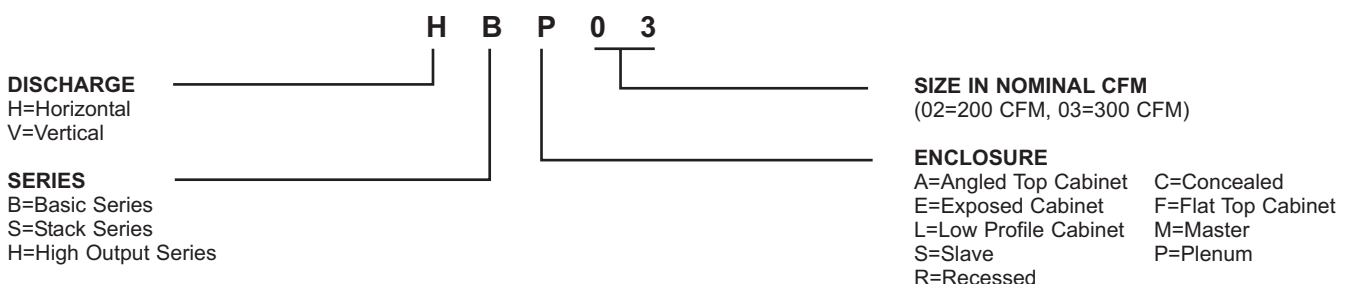
**HBR RECESSED CEILING UNIT**

**HBR**

The HBR is a horizontal discharge unit with concealed casing and exposed telescopic bottom. Specific features include:

- ◆ The hinged bottom panel incorporates a stamped return air grille and a filter. It provides ample access to all internal parts.
- ◆ The telescopic construction enables up to two inches of vertical adjustment, to match the ceiling line.
- ◆ An optional outside air damper can be installed inside the cabinet.

**BASE UNIT MODEL AND SIZE NOMENCLATURE**



## VERTICAL BASIC SERIES *NOMINAL CAPACITIES 200 through 1200 CFM; 6,000 through 36,000 BTU/H*

---



**VBC** CONCEALED FLOOR UNIT

### **VBC**

The VBC is a concealed floor unit designed for furred-in applications. Specific features include:

- ◆ An optional decorative front panel is available for recessed placement.
  - ◆ Fiberglass-lined interior dampens noise as well as provides protection against sweating.
  - ◆ 3-speed fan selector switch is standard on vertical basic units.
  - ◆ One-inch discharge collar is provided for ducted application.
- 



**VBF** FLAT TOP CABINET

### **VBF**

The VBF is a slim-lined floor cabinet unit. Specific features include:

- ◆ One piece front access panel.
  - ◆ Top panel with integral stamped grille & control access doors. Aluminum double-deflection grille can be installed as an option.
  - ◆ Other options include a heavy duty front panel and front panel/control door locks.
- 



**VBA** ANGLED TOP CABINET

### **VBA**

The VBA is similar to the VBF except for an angled top to minimize exterior damage and prevent objects from being placed on the top of the unit.

---



**VBL** LOW PROFILE CABINET

### **VBL**

The VBL is a floor cabinet unit with a low silhouette for applications where unit height is restricted. Specific features include:

- ◆ Top panel with integral stamped grille & control access doors.
- ◆ Front access panel with stamped return air grille.
- ◆ Options include leveling legs and special colors.
- ◆ Due to space limitation, only 200 through 600 CFM nominal sizes available.

## VERTICAL STACK SERIES *NOMINAL CAPACITIES 300 through 1200 CFM; 9,000 through 36,000 BTU/H*

---



VSR RECESSED HI-RISE UNIT

### VSR

The VSR is a vertical stack unit for hi-rise applications. Specific features include:

- ◆ Vertical seamless copper risers are attached to the units and are sized according to engineering specifications for 2-Pipe or 4-Pipe systems.
- ◆ Direct discharge with one or two grilles and/or duct discharge can be specified for front, right, left, rear and/or top location.
- ◆ Oversized coils assure high-condensate removal while maintaining extremely low sound levels.
- ◆ Numerous additional options can be selected for these units.

### VSM and VSS

- ◆ Back-to-Back or Side-by-Side units with One-hour fire wall are VSM Recessed Master with risers and VSS Recessed Slave without risers.

## HORIZONTAL HIGH OUTPUT SERIES *NOMINAL CAPACITIES 600 through 2000 CFM; 18,000 through 60,000 BTU/H*

---



HHC CONCEALED CEILING UNIT

### HHC

The HHC is a horizontal fan coil unit designed for elaborately ducted systems. This unit produces a relatively high external static pressure coupled with higher delivery volumes. Specific features include:

- ◆ Low silhouette to suit minimal clearance drop ceilings.
- ◆ Rugged galvanized steel construction assures durability and dependable performance with minimal maintenance.
- ◆ Open construction facilitates easy access, even in the most confined spaces.



HHP CONCEALED w/PLENUM

### HHP

The HHP is similar to the HHC except for a fiberglass-lined plenum over the fan section. Special features include:

- ◆ Provision for ducted return air and supply.
- ◆ Bottom or rear return air with optional filter.



HHE EXPOSED CABINET UNIT

### HHE

The HHE is a fully-enclosed, under-ceiling unit with an unpainted cabinet. Specific features include:

- ◆ Fiberglass-lined, galvanized casing.
- ◆ Standard arrangements for ducted supply and return applications.
- ◆ Removable bottom panel provides easy maintenance access.

## VERTICAL HIGH OUTPUT SERIES *NOMINAL CAPACITIES 600 through 2000 CFM; 18,000 through 60,000 BTU/H*



VHC CONCEALED CLOSET UNIT

### VHC

The VHC is a vertical discharge, closet-type unit designed for ducted application. Specific features include:

- ◆ Removable front panel provides access to the fan/motor assembly and other components as selected.
- ◆ Externally mounted throw-away filter for quick replacement, washable filter optional.
- ◆ For easy installation, the electric box and pipe connections are located on top.

## ACCESSORIES/OPTIONS



THERMOSTATS

### THERMOSTATS

Controls are available for various applications:

- ◆ Wall or unit-mounted thermostats.
- ◆ Manual or automatic COOL/HEAT changeover switches.
- ◆ 3-speed fan selector switches.
- ◆ Control transformers and relays.



OUTSIDE AIR DAMPERS

### OUTSIDE AIR DAMPERS

Outside Air Dampers are available for select floor and ceiling units.

- ◆ Manually operated and adjustable through return air opening.
- ◆ Motorized and integrated with the control circuit.



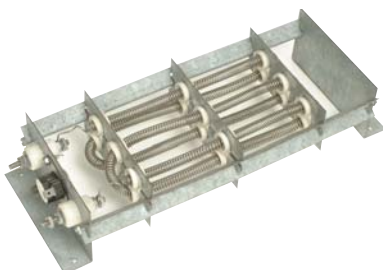
VALVE PACKAGES

### VALVE PACKAGES

Valve Packages are available to suit any control configuration.

Options include:

- ◆ 2-way or 3-way motorized valves.
- ◆ Strainers and automatic air vents.
- ◆ Balancing and flow control valves.
- ◆ Distributors and thermal expansion valves for DX applications.
- ◆ Union fittings and Pete's Plugs.



ELECTRIC HEATERS

### ELECTRIC HEATERS

Electric heaters are available from 1.0 KW through 12 KW per unit with limitations for minimum to maximum range for the unit size and voltage selected.

- ◆ Electric heat is an option as a primary or a secondary heat source.
- ◆ All heaters are interlocked with the fan switch.
- ◆ Robust construction assures trouble-free operation.





## SOME AIR SYSTEM COMPONENTS PROJECTS

- ◆ Marriott Inner Harbour - Baltimore, MD
- ◆ Mount Sinai Medical Center - Miami, FL
- ◆ Ritz Carlton - Miami Beach, FL
- ◆ HBO Center - Caracas, Venezuela
- ◆ Mandarin Oriental - Miami, FL
- ◆ Ella Darling School System - Greenville, MS
- ◆ Hyatt Regency Chesapeake Bay - Cambridge, MD
- ◆ Grand Central Station - New York City, NY
- ◆ Holiday Inn Select - Atlanta, GA
- ◆ University of Miami Medical Center - Miami, FL
- ◆ Adam' s Mark Hotel - Clearwater Beach, FL
- ◆ Ocean Club - Paradise Island, Bahamas
- ◆ Diplomat Hotel & Country Club - Hollywood, FL
- ◆ Carlos Gilbert School - Santa Fe, NM
- ◆ Grove Isle Club & Hotel - Coconut Grove, FL
- ◆ Opalocka Coast Guard Base - Miami, FL
- ◆ Sibley Memorial Hospital - Washington, DC
- ◆ Hollywood Hills Nursing Home - Hollywood, FL
- ◆ U.S. Soldier's & Airmen Home - Washington, DC
- ◆ Unaccompanied Enlisted Personnel Barracks - Ft. Huachuca, AZ
- ◆ Department of Justice - Washington, DC
- ◆ Weddington School - Greenville, MS
- ◆ New Executive Office Building - Washington, DC
- ◆ Panama Naval Hospital - Panama
- ◆ Adam' s Mark Hotel - Daytona Beach, FL
- ◆ Van Buren Elementary School - Plainfield, IN
- ◆ Roney Palace Apartments - Miami Beach, FL
- ◆ Duke Semans Building - New York City, NY
- ◆ Parker Plaza - Hallandale, FL
- ◆ 5660 Collins Ave. Apt. Bldg. - Miami Beach, FL

**For More  
Information  
Contact:**

TITUS  
990 Security Row  
Richardson, TX 75081  
(972) 699-1030  
[www.Titus-HVAC.com](http://www.Titus-HVAC.com)

**Represented By:**