

Huebsch®

Huebsch

HC20-80 1b

On-Premises

Washer-Extractors



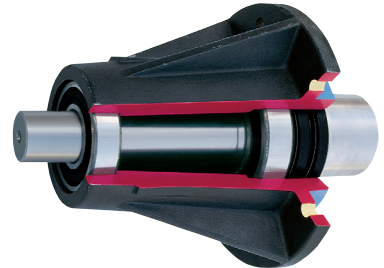
A Classic Laundry Solution



Today's on-premises laundry needs are ever-changing, but your need for reliability and durability remains constant. That's why Huebsch washer-extractors are such an important addition to your facility. Their larger size provides an easy solution for customers with oversized items, and their superior quality and reliable performance add to the efficiency of your laundry room.

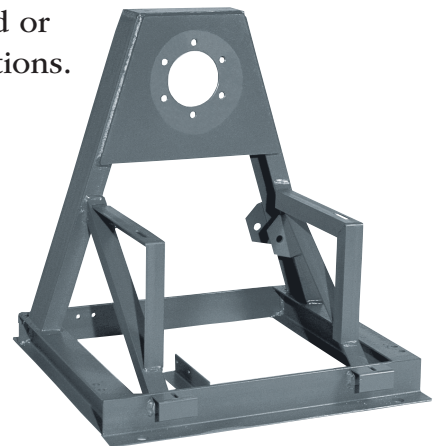
Quality That Lasts

Huebsch's **heavy-duty bearings** add up to trouble-free performance. Two double-lip seals provide four sealing surfaces, which isolate the bearings from the wash load for absolute protection.



While **high quality internal components** ensure years of reliable service, rugged exterior panels form the protective shell of Huebsch washer-extractors. The components and panels used in Huebsch equipment are the result of demanding in-house testing to make certain they stand up to the rough demands of a commercial laundry.

Our **strong industrial frames** weigh almost as much as some competitor's complete machines. The structural steel is the same rugged material used in the construction of bridges and skyscrapers. All-welded construction is used with no riveted or bolted connections.



Unmatched Warranty

At Huebsch, we're so confident that our quality washer-extractors are built to last, we offer a **THREE-year warranty*** on the entire machine. The frame, cylinder, shaft, bearings and seals are under warranty for **FIVE years***.

* Parts only, labor not included.
See Huebsch Warranty Bond for specifics.

3 year limited warranty*

Made In The USA

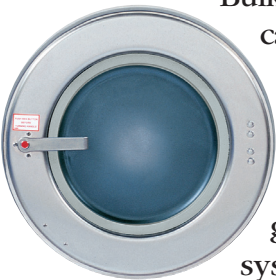


HUEBSCH washer-extractors are manufactured in Ripon, Wisconsin, USA and are sold and supported by top-quality distributors worldwide.



The simple design of our **direct V-belt drive system** eliminates high maintenance nuisance problems such as clutches, jackshafts and transmissions. Count on low service costs, high efficiency and long life. Our quiet cabinet is highly conducive to a relaxed laundry room environment.

Convenience



Bulky items like sheets and blankets can be difficult to load and unload, Huesch washer-extractors have a **large stainless steel door** to give you all the maneuvering room you need. Shatterproof glass and a fail-safe door lock system reduce the risk of injury. A

self-cleaning, easy-to-use **automatic supply dispenser** allows operators to add detergents, softeners, etc., at the start of a wash cycle.

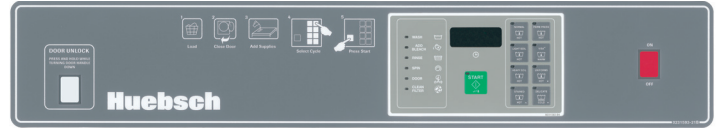
For more automated laundry operations, Huesch washer-extractors can be easily connected to a **liquid central supply system**.



User Friendly & Flexible

Because different laundry operations have different needs, Huesch offers washers with different control options.

B-Micro



Our “**B-Series**” **microprocessor control** models are simple to operate. The eight preprogrammed cycles are suitable for most laundry operations. And because each of the eight cycles can be easily modified, they also allow your operation to adapt to changing laundry needs. The LED display counts down the time remaining in the cycle, and a special self-diagnostic test cycle also is included to aid in troubleshooting.

M-Electromechanical



For smaller laundries, our “**M-Series**” **electromechanical timer** models allow operators to utilize four different settings by simply pushing a button.

Cycles include: **hot** for heavy soil and whites; **warm** for medium soil and whites; **warm** for light soil and permanent press; **cold** for delicates, knits, and very lightly soiled items. These cycles vary in length, amount of wash action and final spin time.

(Available on 20 lb - 60 lb models only.)

HC20-80 lb On-Premises Washer-Extractor Specifications

HC Models		HC20	HC30	HC40	HC60	HC80
Capacity - lb (kg)		20 (9)	30 (13.6)	40 (18)	60 (27)	80 (36)
Overall Width - in (mm)		26" (660)	29" (737)	30 5/8" (778)	34 1/16" (865)	41 1/2" (1054)
Overall Depth* - in (mm)		29 13/16" (757)	34 13/16" (884)	40" (1016)	42 15/16" (1091)	52" (1321)
Overall Height - in (mm)		42 7/8" (1089)	45 7/8" (1165)	47 1/4" (1200)	50 13/16" (1291)	56 7/8" (1444)
Cylinder Diameter - in (mm)		21" (533)	24" (610)	26 1/4" (667)	30" (762)	36" (916)
Cylinder Depth - in (mm)		13 3/4" (349)	16" (406)	20 1/4" (514)	22" (559)	22" (559)
Cylinder Volume - cu. ft. (liters)		2.76 (78.1)	4.19 (118)	6.34 (180)	9.0 (255)	12.4 (354)
Door Opening Size - in (mm)		11 5/8" (295)	14 11/32" (364)	16 1/4" (413)	16 1/4" (413)	18 1/2" (470)
Door Bottom-to-Floor - in (mm)		14 3/8" (366)	14" (356)	14 1/2" (368)	15" (381)	17 3/4" (451)
Wash Speed - RPM	2-speed	57	49	51	44	N/A
	V-speed	N/A	N/A	N/A	N/A	22/40
Extract Speed - RPM	2-speed	528	464	491	469	N/A
	V-speed	N/A	N/A	N/A	N/A	280/408/524
G-Force Factor	2-speed	83.1	73.3	89.8	93.8	N/A
	V-speed	N/A	N/A	N/A	N/A	40/85/140
Water Inlet Connection - in (mm)		3/4" (19)	3/4" (19)	3/4" (19)	3/4" (19)	3/4" (19)
Steam Inlet Connection - in (mm)		1/2" (13)	1/2" (13)	1/2" (13)	1/2" (13)	1/2" (13)
Drain Connection Size - in (mm)		2" (52)	2" (52)	3" (76)	3" (76)	3" (76)
Drain Height-to-Floor - in (mm)		4 1/2" (114)	4" (100)	4 3/4" (121)	5" (127)	5 3/4" (146)
Motor Wash - hp (kw)	2-speed	.15 (.11)	.24 (.18)	.40 (.30)	.55 (.41)	N/A
	V-speed	N/A	N/A	N/A	N/A	N/A
Motor Extract - hp (kw)	2-speed	.74 (.55)	1.34 (1)	1.8 (1.3)	2.7 (2.01)	N/A
	V-speed	N/A	N/A	N/A	N/A	5.0 (3.73)
Voltage/Hz/Phase • Circuit Breaker - FLA	B	120/60/1 • 20-16	N/A	N/A	N/A	N/A
	C	380-415/50/3 • 15-4	380-415/50/3 • 15-4	380-415/50/3 • 15-5	380-415/50/3 • 15-4	N/A
	D	220-240/50/3 • 15-4	220-240/50/3 • 15-6	220-240/50/3 • 15-8	220-240/50/3 • 20-7	N/A
	E	220-240/50/1 • 20-10	220-240/50/1 • 20-10	N/A	N/A	N/A
	F	440-480/60/3 • 15-4	440-480/60/3 • 15-4	440-480/60/3 • 15-5	440-480/60/3 • 15-4	N/A
	J	200/50/3 • 20-7.5	200/50/3 • 20-7.5	200/50/3 • 20-7.5	200/50/3 • 20-8	N/A
	N	N/A	N/A	N/A	N/A	400-480/50-60/3 • 15-4.5
	O**	200-240/60/3 • 15-5	200-240/60/3 • 15-6	200-240/60/3 • 20-7.5	200-240/60/3 • 20-10	N/A
	P	N/A	N/A	N/A	N/A	380-415/50-60/3 • 15-4
	Q	N/A	N/A	N/A	N/A	200-240/50-60/3 • 15-7
	X	N/A	N/A	N/A	200-240/50-60/1-3 • 15-9	N/A
	Y	208-240/60/1 • 15-10	208-240/60/1 • 20-10	208-240/60/1 • 30-14	N/A	N/A
	Shipping Dimensions Approx. - in (mm)	H	51" (1295)	53 1/2" (1359)	56 1/2" (1422)	58 1/2" (1486)
W		29" (737)	30 1/2" (774)	32" (813)	36" (914)	48" (1219)
D		32 1/2" (826)	37 1/2" (953)	41" (1041)	44 1/2" (1130)	56" (1422)
Net Weight - lb (kg)		353 (160)	496 (225)	686 (311)	811 (368)	1346 (610)
Shipping Weight - lb (kg)		373 (169)	519 (235)	710 (322)	838 (380)	1420 (644)
Export Shipping Weight - lb (kg)		461 (209)	600 (272)	810 (367)	947 (430)	1545 (701)
Agency Approvals***		ETL, ELT _c , CE	ETL, ELT _c , CE	ETL, ELT _c , CE	ETL, ELT _c , CE	ETL, ELT _c , CE

* Overall depth includes drain pipe and door handle.

** Standard domestic voltage 208-240/60/3. Circuit breaker and amp draw data shown is for standard voltage models without auxiliary heat. Consult factory for other configurations. Manufacturer strongly recommends using a circuit breaker instead of fuses. Use 3-pole circuit breakers for 3-phase machines.

*** Agency approvals may vary depending on configuration. Consult factory for details. Steam connection requires 1/2" N.P.T.

Due to continuous product improvements, design and specifications subject to change without notice. The quality management systems at Alliance Laundry Systems manufacturing facilities are registered as ISO 9001:2000 compliant.

© Copyright 2007 Alliance Laundry Systems LLC

Printed in the U.S.A.



Printed on paper manufactured with virgin pulp from certified sources and a minimum of 10% post-consumer recovered fiber.