

"QUALITY PUMPS SINCE 1939"



ZOELLER PUMP CO.



SECTION: 3.20.155

FM1546

0101

Supersedes

0598

Product information presented here reflects conditions at time of publication. Consult factory regarding discrepancies or inconsistencies.

MAIL TO: P.O. BOX 16347 • Louisville, KY 40256-0347
SHIP TO: 3649 Cane Run Road • Louisville, KY 40211-1961
(502) 778-2731 • 1 (800) 928-PUMP • FAX (502) 774-3624

visit our web site:
<http://www.zoeller.com>

ZOELLER ON-SITE WASTEWATER PRODUCTS

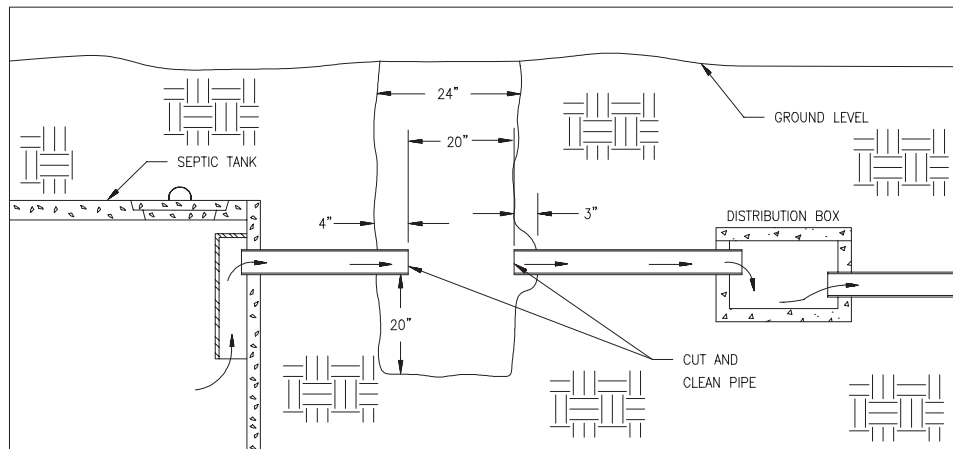
INTRODUCING ZOELLER SEPTIC SYSTEM FILTERS



Zoeller Container Assembly 170-0011

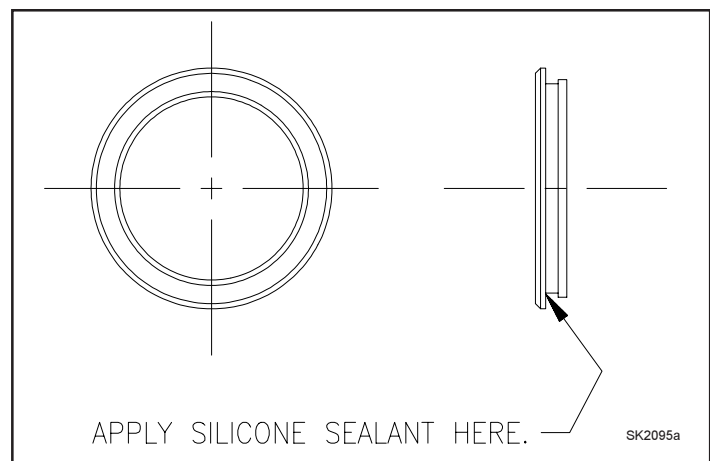
INSTALLATION INSTRUCTIONS

1. Dig a hole and remove a section of pipe as shown in drawing #1, below.
2. There are two sizes of pipe seals included with the filter container. The larger seal is for schedule 40, 4" PVC, and the smaller seal is for SDR 35, 4" PVC. The larger seal is always installed on the outlet of the filter container (the outlet is 1/4" lower than the inlet). Use a small or large seal in the inlet, depending on whether the existing pipe is SDR 35 or schedule 40. Apply silicone sealant, included, to the mating surface of the pipe seal and filter container. See drawing #2.
3. Cut a piece of schedule 40, 4" PVC 6-1/4" to 6-1/2" long. Cement a 4" coupling to one end of this pipe. The coupling will be used to connect the schedule 40 PVC to the existing pipe. Insert the pipe into the outlet of the container, keeping the coupling on the outside.



DRAWING #1

SK1582



DRAWING #2

SK2095a

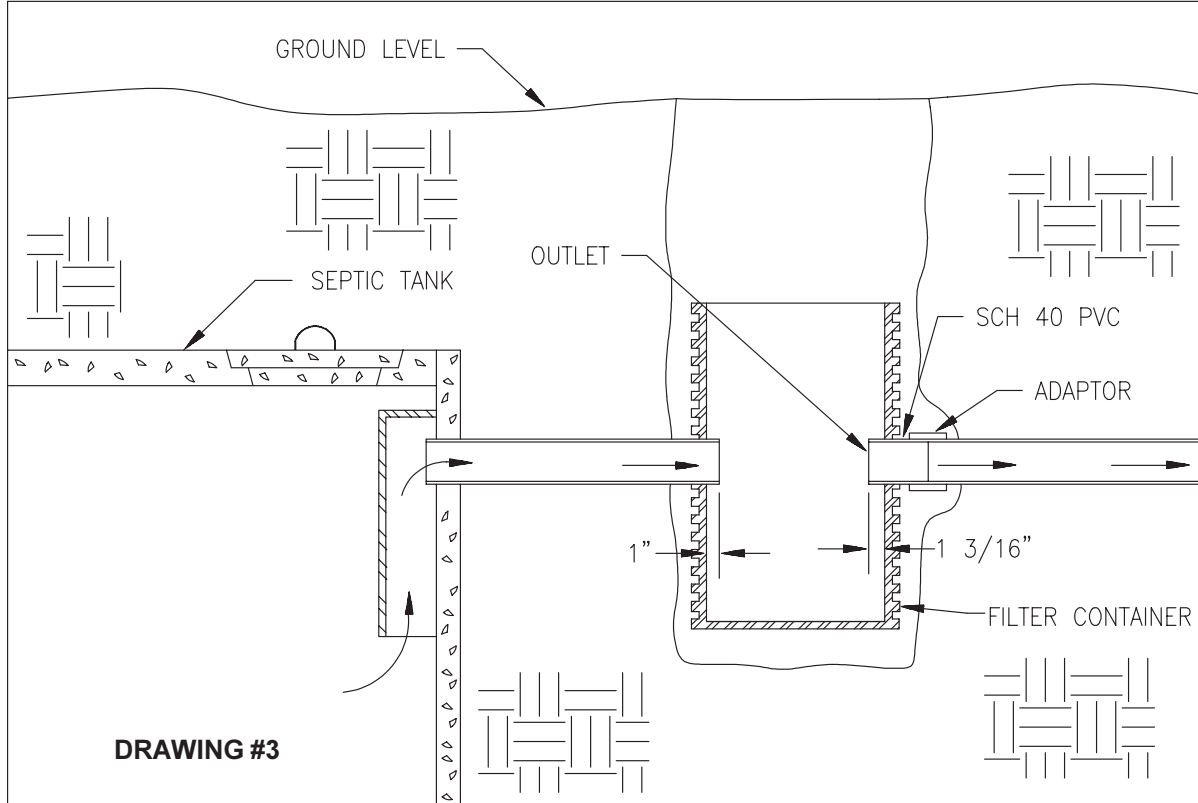
ALL ZOELLER ON-SITE WASTEWATER PRODUCTS MUST BE INSTALLED IN ACCORDANCE WITH LOCAL AND/OR STATE PLUMBING AND/OR HEALTH DEPARTMENT CODES AND/OR THE NATIONAL ELECTRICAL CODE (NEC).

Distributed by:

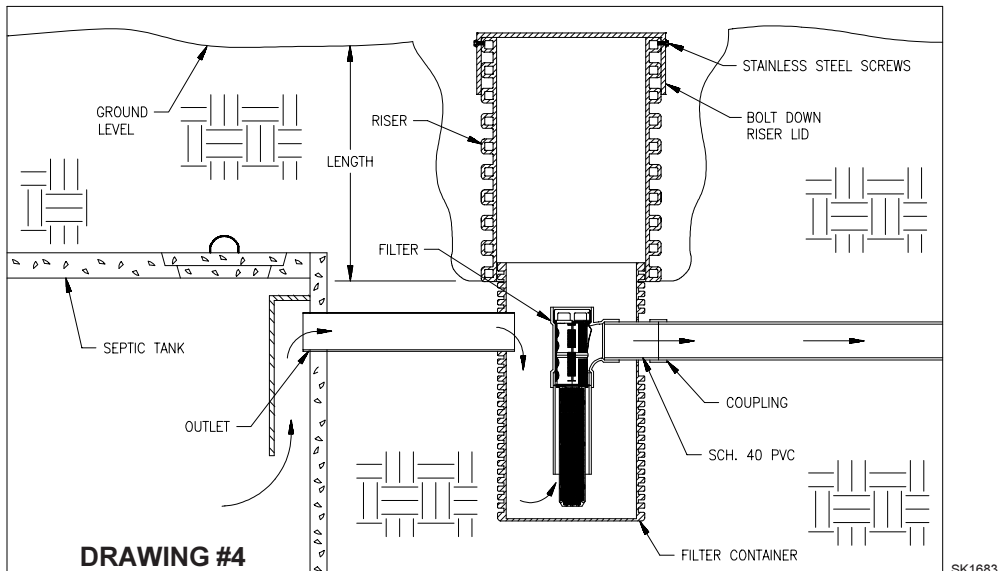
ZOELLER PUMP CO.

Zoeller Container Assembly

- Put the filter container into the hole. Insert the pipe coming from the septic tank into the inlet of the container. The pipe should extend into the container approximately 1". Make sure the container is sitting firmly on the bottom of the hole.
- Push outward on the outlet pipe and connect the adaptor to the existing pipe. Once in place, the pipe should extend 1-3/16" into the container. After checking for a proper fit, cement the coupling in place. (See drawing #3)



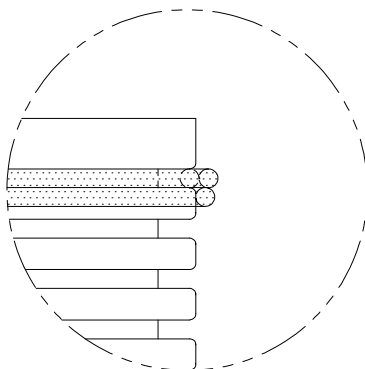
- Remove the filter from the sanitary tee. Attach the sanitary tee onto the pipe extending into the outlet of the container. Slide the filter back into the sanitary tee.
- Backfill the hole to within a couple of inches from the top of the container, and compact the dirt. Measure from the level of the compacted dirt up to ground level. This measurement is how tall your riser needs to be. (See drawing #4)



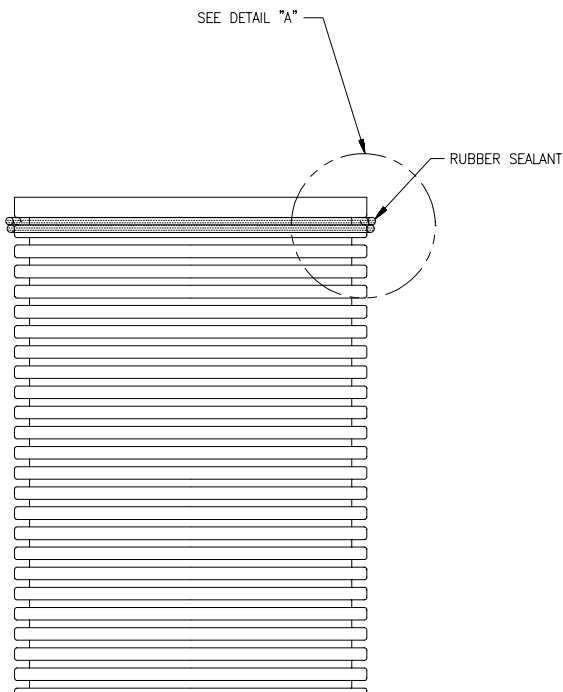
Zoeller Container Assembly

8. With a hacksaw, cut the riser to the desired height. Place the rubber sealant on the outside of the filter container; start the first strip at the upper groove of the filter container. Apply a second band of sealant directly below the first. Finally, apply a third band of sealant on top of the first. Each band of sealant should go around the full circumference of the container. (See drawing #5)
9. Place the riser over the container, making sure you have a continuous seal. Place lid on riser and back fill around riser up to lid. Make sure you do not move the riser relative to the basin. Remove Lid. Mix the two part epoxy sealant supplied and pour it into the void between the riser and filter container walls. (See drawing #6) Let the epoxy harden before you continue.
10. Line up the holes in the lid with the holes in the riser. Install the stainless steel screws.
11. You're finished! This simple installation made money for you and saved your customer's drainfield.

If you have any questions concerning the installation of the Zoeller container assembly, call our Technical Service Department at 1-800-928-PUMP.

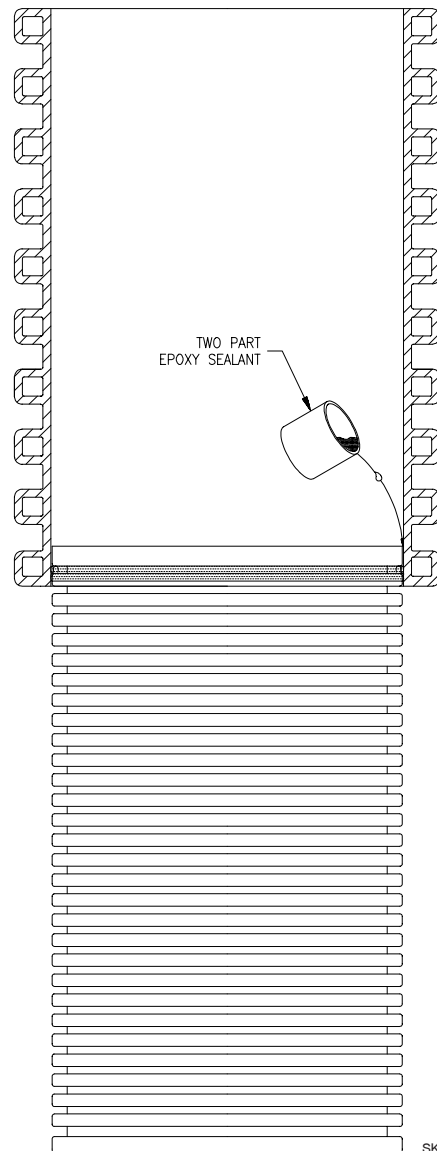


DETAIL "A"
SCALE 2.5X



DRAWING #5

SK2095b



DRAWING #6

SK2095c

ALL ZOELLER ON-SITE WASTEWATER PRODUCTS MUST BE INSTALLED IN ACCORDANCE WITH LOCAL AND/OR STATE PLUMBING AND/OR HEALTH DEPARTMENT CODES AND/OR THE NATIONAL ELECTRICAL CODE (NEC).

© Copyright 2001 Zoeller Co. All rights reserved.



<http://www.zoeller.com>

ZOELLER
PUMP CO.

MAIL TO: P.O. BOX 16347
Louisville, KY 40256-0347
SHIP TO: 3649 Cane Run Road
Louisville, KY 40211-1961
(502) 778-2731 • 1 (800) 928-PUMP
FAX (502) 774-3624

Manufacturers of . . .

"QUALITY PUMPS SINCE 1939"