

SPACE SAVER LINT FILTERS



**Largest Inlets
Accommodates
newest Dryers
with larger ducts**

**Fiberglass
Or
Stainless
Construction**

**Non-Corrosive
Components
No Mild Steel!**

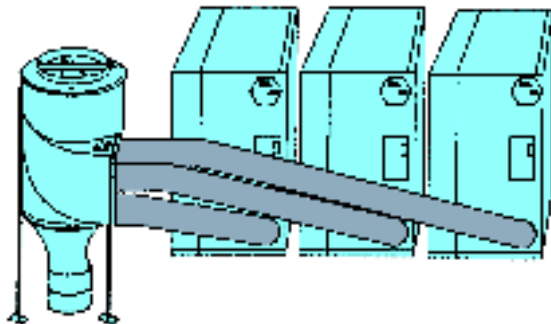
**Smallest
Footprint
per cfm**

**24V Control
Meets all
codes safest
electrically**

**Large Maxi-Seal
Inspection Door**

**30% Thicker
Fiberglass Body**

**Ultra Smooth
Interior**



FRP-15

(shown with optional pre-plumb/mounted control and inlet collars)



FILTER OPERATING CYCLE

- Dryer backpressure is continually monitored by a pressure transducer without any dryer interconnection.
- When the backpressure reaches a level set by the user the lint filter automatically blows clean with compressed air.
- When the filter control determines a complete absence of backpressure indicating all dryers are off, the filter will blow down for maximum cleaning.

Control:

24V Solid State Pressure Transducer operated control

Power:

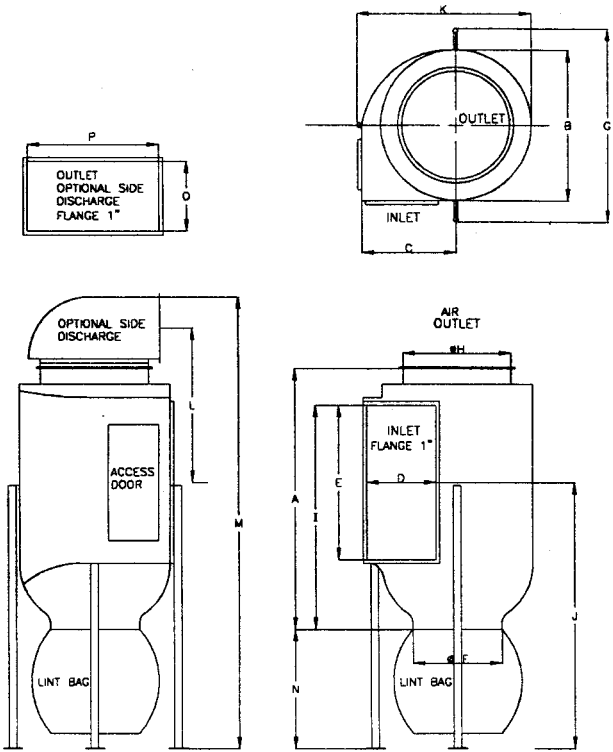
110V to transformer supplies by Energenics

REQUIRED:

Compressed air:

100 psi for six seconds, 30-40 cubic ft.
 3/4 inch air line and valves under 6,000 CFM
 1 inch air line and valves over 6,000 CFM

DIMENSIONS



Model #	FRP-4	S-4	FRP-6	S-6	FRP-8	S-8	FRP-10	S-10	FRP-15	S-15	FRP-20	S-20	FRP-25	S-25	FRP-30	S-30
CFM	4,000	4,000	6,000	6,000	8,000	8,000	10,000	10,000	15,000	15,000	20,000	20,000	25,000	25,000	30,000	30,000
Screen Area Sq. Feet	18	18	20	20	40	40	36	36	40	40	49	49	86	86	96	96
Oper. Wt. Lbs.	95	130	180	300	200	310	170	370	210	410	450	750	475	775	475	775
Ship Wt. Lbs.	140	160	220	350	260	380	280	400	350	490	530	850	555	875	585	895
A	52	52	54.0	52.0	94.5	94.5	67.0	59.0	63.0	61.0	80.0	75.0	88.0	88.0	88.0	88.0
B	27	27	32.0	30.0	30.0	30.0	44.0	40.0	52.0	48.0	56.0	56.0	84.0	84.0	84.0	84.0
C	15	15	22.0	22.0	18.0	18.0	30.0	29.0	39.0	33.0	46.0	40.0	45.0	45.0	45.0	45.0
D	12	12	20.0	12.0	12.0	12.0	24.0	16.0	32.0	24.0	36.0	24.0	48.0	48.0	48.0	48.0
E	30	30	30.0	36.0	56.0	56.0	40.0	46.0	40.0	46.0	50.0	58.0	56.0	56.0	56.0	56.0
F	27	27	27.0	30.0	27.0	27.0	23.0	20.0	29.5	24.0	24.0	24.0	30.0	30.0	30.0	30.0
G	30	30	35.0	35.0	34.0	34.0	50.0	46.0	58.0	52.5	64.0	64.0	94.0	94.0	94.0	94.0
H	16	16	20.0	20.0	26.0	26.0	28.0	30.0	30.0	34.0	34.0	48.0	48.0	48.0	48.0	48.0
I	42	42	35.0	42.0	62.0	62.0	57.0	53.5	52.0	56.0	72.0	70.0	70.0	70.0	70.0	70.0
J	51	51	44.0	48.0	36.0	36.0	61.0	54.5	56.0	57.0	52.0	65.0	65.0	65.0	65.0	65.0
K	28	28	38.0	37.0	33.0	33.0	48.0	49.0	52.0	57.0	67.0	68.0	94.0	94.0	94.0	94.0
L	34	34	43.0	37.0	69.0	69.0	40.0	38.5	41.0	38.0	51.0	48.0	61.0	61.0	61.0	61.0
M	92	92	94.0	92.0	134.0	134.0	109.0	101.0	105.0	103.0	131.0	125.0	140.0	140.0	140.0	140.0
N	24	24	24.0	24.0	24.0	24.0	24.0	24.0	24.0	24.0	24.0	24.0	24.0	24.0	24.0	24.0
O	14	14	14.0	14.0	14.0	14.0	16.0	16.0	16.0	16.0	24.0	24.0	32.0	32.0	32.0	32.0
P	24	24	24.0	24.0	30.0	30.0	39.0	39.0	40.0	40.0	48.0	48.0	60.0	60.0	60.0	60.0



ENERGENICS SUPPLIES

UL approved 24V transformer
 24V Solid State Control
 24V solenoid valves
 legs or ceiling mounting brackets
 lint bag

INSTALLER SUPPLIES

Ducts to and from lint filter
 Mounts and installs controls
 Air and water piping / connections
 Rigging and Securing

Popular Options Available

Fire Control:

Temperature sensing release of water sounds alarm and strobe for Temperatures over 360 degrees F.

Excess Pressure:

Sounds alarm if pressure exceeds the dryer specification. Warning of possible filter problems.

Static Pressure Gauge:

Allows visual checking of compressed air supplied to the filter for blowdown.

Side Discharge:

360 degree rotating top side discharge.

Flexible Lint Tube:

Used with ceiling mount to collect lint at floor



1470 Don Street • Naples, Florida 34104-3366
 Telephone 239-643-1711
 Fax 239-643-6081
 Customer Service 800-944-1711

Sold and Serviced By:

www.energenics.com