

# Compressed Gas Gauge



## Applications

Winters Compressed Gas Gauge is designed for use on various types of regulators (e.g. beverage dispensing, compressors, water pumps, paint sprayers, etc.). The low pressure instrument is commonly utilized on the downside of a regulator indicating regulated reduced pressure. The high pressure instrument is utilized for measuring cylinder or tank pressure.

## Options

- Other configurations available
- Dual scale available upon request

Specifications	
Dial:	1½" (40mm), 2" (50mm)
Case:	Black steel with blow-out back
Lens:	Acrylic
Ring:	Black crimped on
Pointer:	Steel, painted black
Socket:	Brass
Connection:	1/8" or 1/4" NPT, bottom or back
Bourdon Tube:	Brass
Movement:	Brass
Ambient/Process Temperature:	-40°F to 150°F (-40°C to 65°C)
Over-pressure Limit:	25% of full scale value
Working Pressure:	Maximum 75% of full scale value
Accuracy:	3%-2%-3% of full scale ANSI/ASME Grade B

Product Codes			
Range	1½" (40mm) 1/8" NPT Back Conn.	2" (50mm) 1/8" NPT Back Conn.	2" (50mm) 1/4" NPT Bottom Conn.
0-30 psi	Q9014		Q9020
0-60 psi	Q9015		Q9021
0-100 psi		Q9017	Q9022
0-160 psi	Q9016	Q9018	Q9023
0-300 psi		Q9019	Q9024
0-2000 psi			Q9025
0-3000 psi			Q9026

UL252A recognized - low pressures 30-300 psi  
 UL404 listed - high pressures 2000 psi and 3000 psi

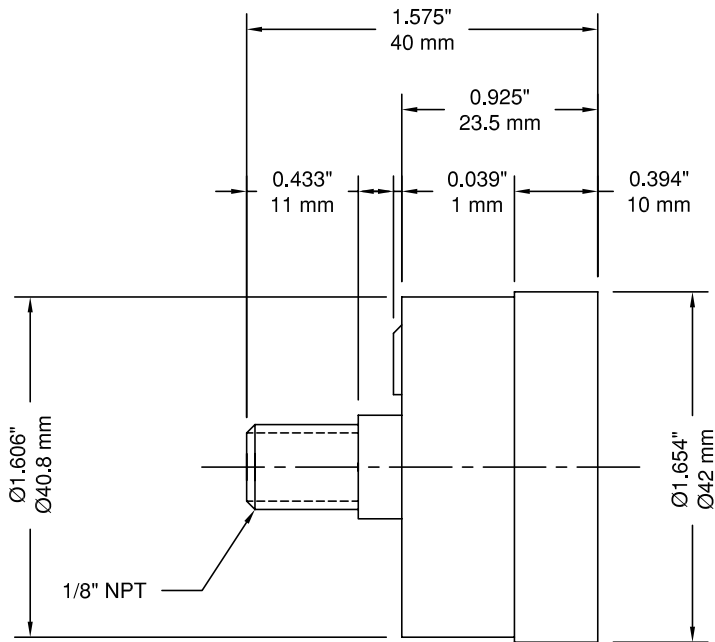


Corporate Office: 121 Railside Road • Toronto • ON • M3A 1B2 • (416) 444-2345 • Fax: (416) 444-8979

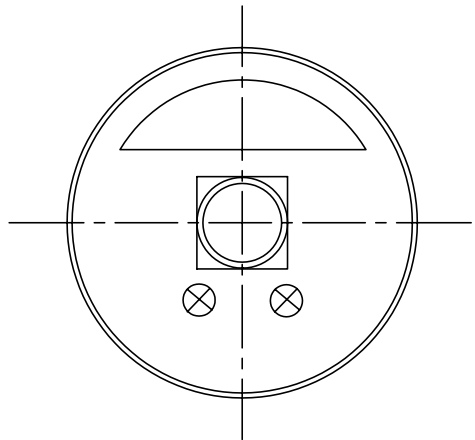
U.S.A. Office: 600 Ensminger Road • Buffalo • NY • 14150 • (716) 874-8700 • Fax: (716) 874-8800

[www.winters.com](http://www.winters.com) • 1-800-WINTERS (946-8377)

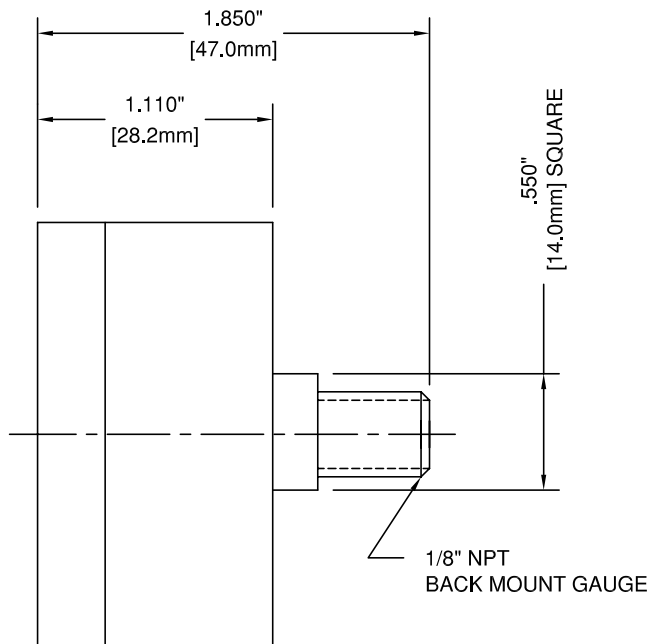
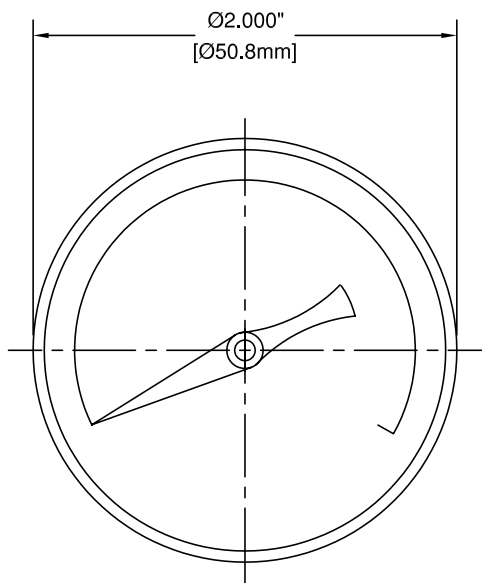
# Compressed Gas Gauge



1 1/2" Back Connection, 1/8" NPT



2" Back Connection, 1/8" NPT



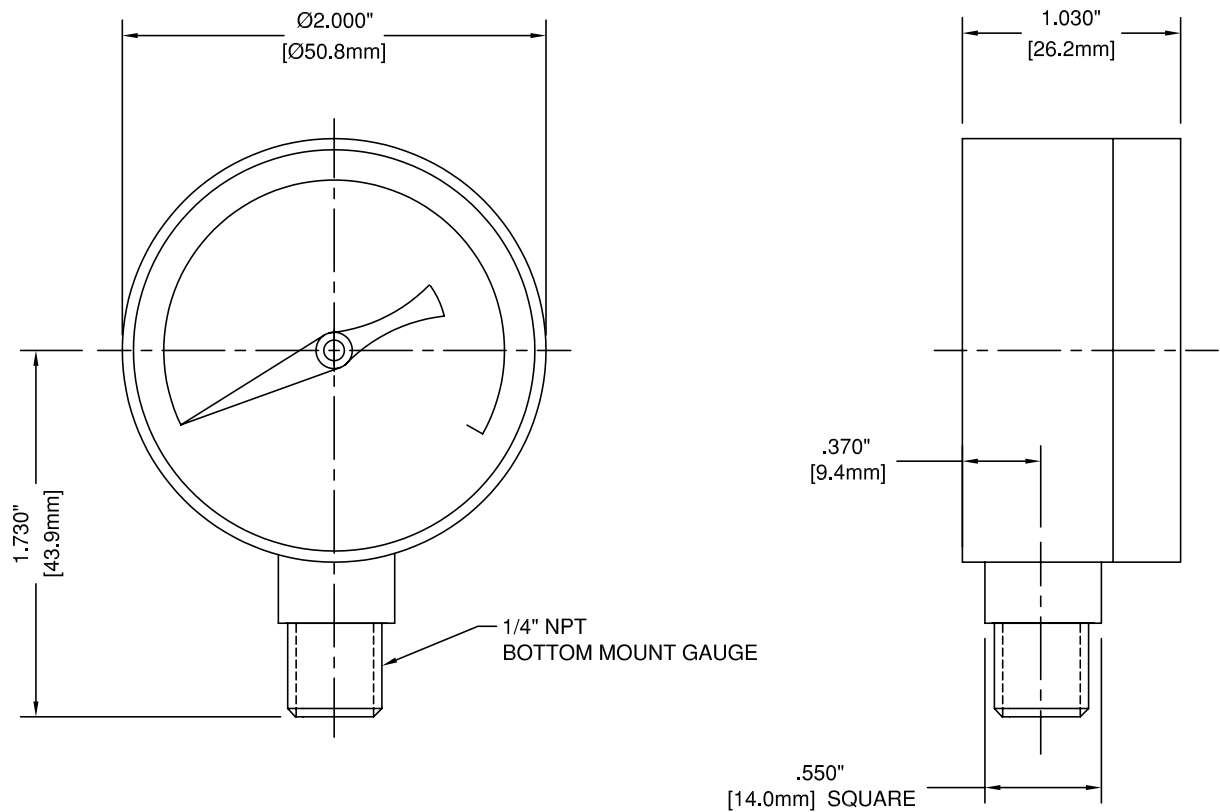
Corporate Office: 121 Railside Road • Toronto • ON • M3A 1B2 • (416) 444-2345 • Fax: (416) 444-8979

U.S.A. Office: 600 Ensminger Road • Buffalo • NY • 14150 • (716) 874-8700 • Fax: (716) 874-8800

[www.winters.com](http://www.winters.com) • 1-800-WINTERS (946-8377)

# Compressed Gas Gauges

## 2" Bottom Connection, 1/4" NPT



Corporate Office: 121 Railside Road • Toronto • ON • M3A 1B2 • (416) 444-2345 • Fax: (416) 444-8979

U.S.A. Office: 600 Ensminger Road • Buffalo • NY • 14150 • (716) 874-8700 • Fax: (716) 874-8800

[www.winters.ca](http://www.winters.ca) • 1-800-WINTERS (946-8377)