



Product information presented here reflects conditions at time of publication. Consult factory regarding discrepancies or inconsistencies.

MAIL TO: P.O. BOX 16347 • Louisville, KY 40256-0347
SHIP TO: 3649 Cane Run Road • Louisville, KY 40211-1961
(502) 778-2731 • 1 (800) 928-PUMP • FAX (502) 774-3624

visit our web site:
www.zoeller.com

REPLACEMENT PARTS LIST FOR MODELS:

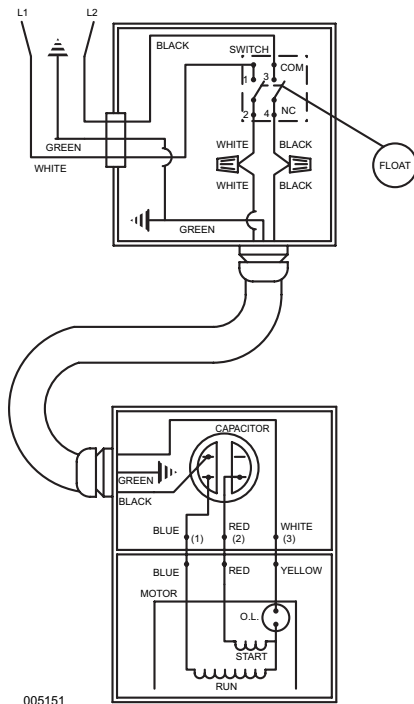
M3282 AUTOMATIC 115V
N3282 NONAUTOMATIC 115V
D3282 AUTOMATIC 230V
E3282 NONAUTOMATIC 230V

Consult factory for all other models

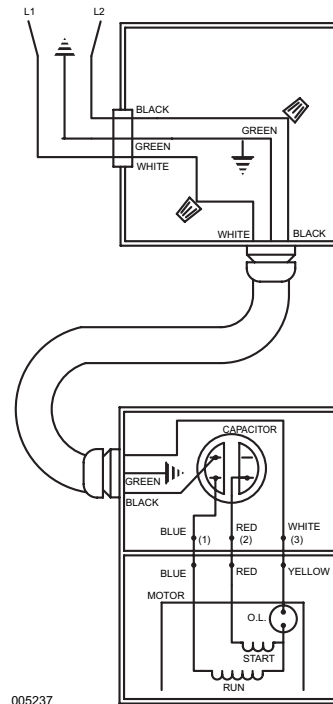
TO ORDER REPLACEMENT PARTS:

PLEASE FURNISH THE FOLLOWING INFORMATION:

- Model Number.
- Part Number of Pump.
(If manufactured prior to June 1988, give 2 letter date code following Model No.)
- Part Number and Description of part.



WIRING DIAGRAM FOR MODELS
"M3282" All Revisions and "D3282" All Revisions
10/87 (WT) to Current



WIRING DIAGRAM FOR MODELS
"N3282" All Revisions and "E3282" All Revisions
10/87 (WT) thru Current

REPLACEMENT PARTS LIST FOR MODELS "N3282" & "E3282"

See back page for illustrations.

REF. NO.	DESCRIPTION	QTY	NOTES	MODELS: N3282-A					E3282-A				
				10/87 thru 5/92	6/92 thru 11/92	12/92 thru 9/94	10/94 thru 9/01	10/01 thru Current	10/87 thru 5/92	6/92 thru 11/92	12/92 thru 9/94	10/94 thru 9/01	10/01 thru Current
1	• Handle	1		217069	217069	217069	217069	217069	217069	217069	217069	217069	217069
2	Cover & Handle	1		005365	005365	005365	009662	009662	005365	005365	005365	009662	009662
3	• Gasket, Case or Cover	1		001011	001011	001011	001011	012649	001011	001011	001011	001011	012649
4	• Wire Pkg.	1		004756	004756	004756	004756	004756	004756	004756	004756	004756	004756
5	Capacitor & Clamp Asm.	1		002381	002381	002381	002381	002381	002381	002381	002381	002381	002381
6	• Seal, Thru Wall Term	3		003402	003402	003402	003402	003402	003402	003402	003402	003402	003402
7	Mtr. Hsg, Brg, Stator & Term	1	3	005360	005360	005360	005360	005360	005361	005361	005361	005361	005361
8	Bearing, Sleeve	1		001012	001012	001012	001012	001012	001012	001012	001012	001012	001012
9	Rotor (115V/230V)-GE	1		003167	003167	007978	007978	007978	003167	003167	007978	007978	007978
	Rotor (115V/230V)-Emerson	1		003167	003167	007979	007979	007979	003167	003167	007979	007979	007979
10	Bearing, Lower	1		094106	094106	001013	001013	001013	094106	094106	001013	001013	001013
11	• Seal, Mtr Hsg.	1		001014	001014	001014	001014	012648	001014	001014	001014	001014	012648
12	Adapter	1		002357	002357	001003	001003	001003	002357	002357	001003	001003	001003
13	• Seal, Shaft	1		005098	005098	005098	005098	014557	005098	005098	005098	005098	014557
14	Impeller	1		002998	002998	002998	002998	002998	002998	002998	002998	002998	002998
15	Pump Housing	1		217012	217012	217012	217012	217012	217012	217012	217012	217012	217012
16	• Plug	3		034051	034051	034051	034051	034051	034051	034051	034051	034051	034051
17	• Oil, Dielectric	1		003168	006065	006065	006065	006065	003168	006065	006065	006065	006065
18	Flange Pkg. 2"	1		217024	217024	217024	217024	10-1305	217024	217024	217024	217024	10-1305
	Flange Pkg. 3"	1		317024	317024	317024	317024	10-1306	317024	317024	317024	317024	10-1306
19	Cover, Plate & Gasket	1		N/A	007652	007652	007652	007652	N/A	007652	007652	007652	007652
20	• Gasket, Case or Cover	1		N/A	267007	267007	267007	014555	N/A	267007	267007	267007	014555
21	Housing, Switch	1		N/A	006836	006836	009454	009454	N/A	006836	006836	009454	009454
22	Clamp, #60 SS Worm	2		004913	004913	004913	004913	004913	004913	004913	004913	004913	004913
23	Strain Relief	3	1	001770	001770	001770	001770	001770	001770	001770	001770	001770	001770
24	• Seal Asm, Conduit	1	1	009604	009604	009604	009643	009643	005371	005371	005371	009643	009643
25	• Seal Asm, Conduit	1	1	005372	005372	005372	009643	009643	005372	005372	005372	009643	009643
26	Cordage, Conduit & Seals	1		005438	005438	005438	009656	009656	005438	005438	005438	009656	009656
27	Conduit 6'	1		005252	005252	005252	005252	005252	005252	005252	005252	005252	005252
28	Cordage & Terms	1		005354	005354	005354	005354	005354	005354	005354	005354	005354	005354
29	• Screw, .25-20 x .75 HHMM-S	8		001916	001916	001916	001916	001916	001916	001916	001916	001916	001916
30	• Screw, #6-32x.25" RHM SL STLGR	4		001877	001877	001877	001877	001877	001877	001877	001877	001877	001877
31	• Screw, .313-18x1" HH CAP-SS	4		002608	002608	002608	002608	002608	002608	002608	002608	002608	002608
32	• Screw, #10-24 x .375 RHM SL-SS	4		001883	001883	001883	001883	001883	001883	001883	001883	001883	001883
33	• Washer, SS-1.25"ODx.562"IDx.078	2		002115	002115	002115	002115	002115	002115	002115	002115	002115	002115
34	• Screw, .5-13x2" HH CAP-SS	2		001909	001909	001909	001909	001909	001909	001909	001909	001909	001909
35	• Screw, .25-20x1" HHM-SS	1		007790	007790	007790	007790	007790	007790	007790	007790	007790	007790
36	Handle	1		267032	267032	267032	267032	267032	267032	267032	267032	267032	267032
37	Retainer, Handle	2		267053	267053	267053	267053	267053	267053	267053	267053	267053	267053
40	Junction Box Asm.	1		005435	N/A	N/A	N/A	N/A	005435	N/A	N/A	N/A	N/A
□	Rebuild Kit	1		005362	008570	008571	009987	009987	005362	008570	008571	009987	009987

• Items included in Rebuild Kit.

□ Not shown in illustration.

NOTES:

- 1) Strain Relief (Item 23) can be purchased separately, but is included with Cord, Terminal & Seal Assembly (Item 26) and with Seal, Cord Assembly (Items 24 and 25).
- 2) Mtr. Hsg., Brg., Stator & Term. (Item 7) are preassembled at the factory and must be replaced as a unit. Stator is permanently attached to the Motor Housing. Plug (Item 16); Seal, Thru Wall Term. (Item 6) and Bearing - Upper (Item 8) are replaceable.
- 3) When ordering Motor Housing, Bearing, Stator and Term. (Item 9) or Rotor (Item 11) specify either GE or Emerson motor. GE motor can be identified by (4) holes spaced at 90° around the outside diameter of the stator. Emerson motor can be identified by (4) flat edges spaced at 90° around the outside diameter of the stator.
- 4) See FM0160 Parts Price Sheet for listing of parts prices.
- 5) "N/A" indicates, not applicable.

DATE CODE OF MANUFACTURE FROM 12/70 to 12/88

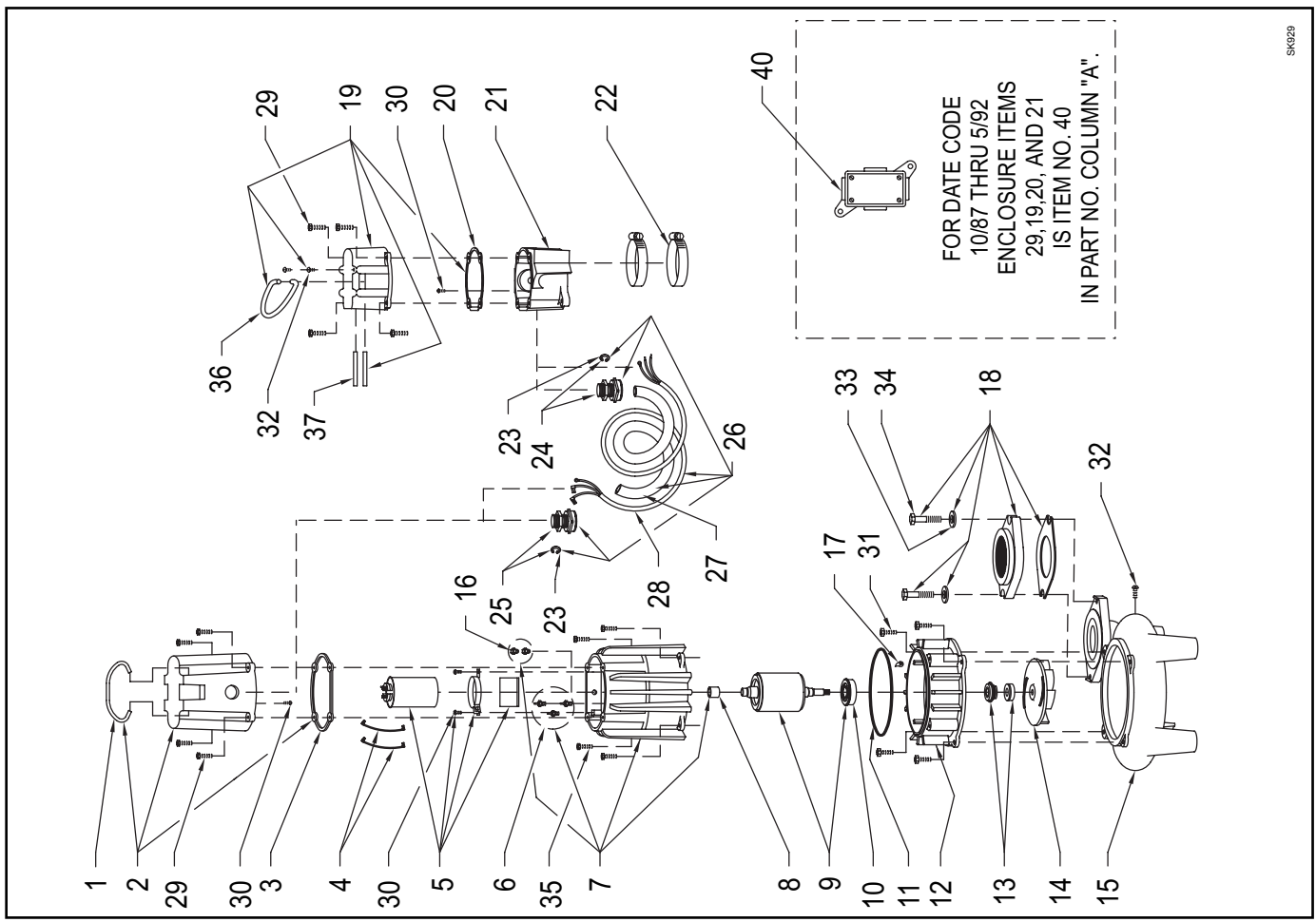
1st LETTER MONTH

2nd LETTER YEAR

M --- JAN.	T --- JULY	A --- 1971	G --- 1977	O --- 1983
N --- FEB.	U --- AUG.	B --- 1972	H --- 1978	P --- 1984
O --- MARCH	V --- SEPT.	C --- 1973	I --- 1979	R --- 1985
P --- APRIL	W --- OCT.	D --- 1974	J --- 1980	S --- 1986
R --- MAY	X --- NOV.	E --- 1975	M --- 1981	T --- 1987
S --- JUNE	Y --- DEC.	F --- 1976	N --- 1982	U --- 1988

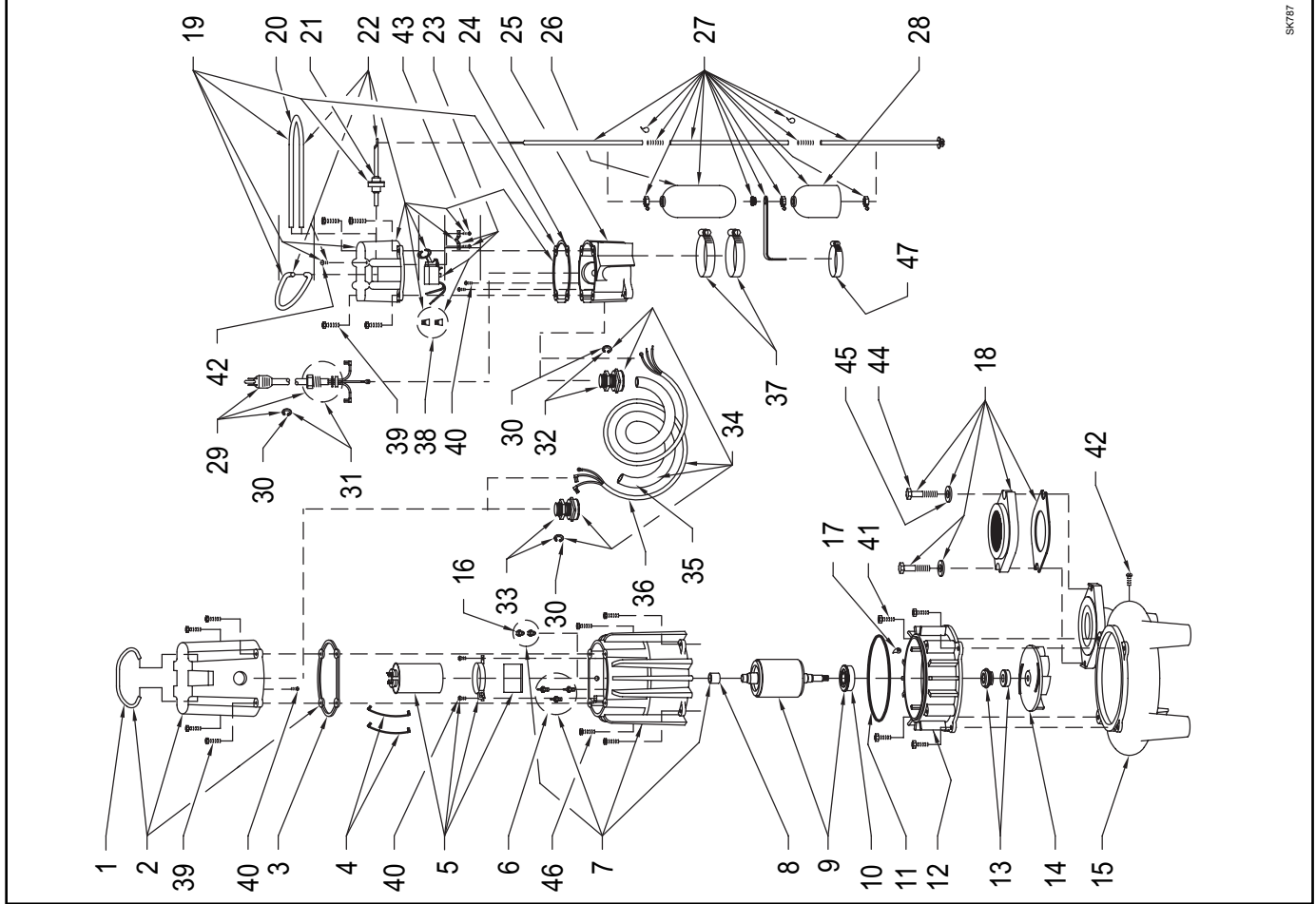
NOTE: Four digit (MMYY) date of mfg. used after June, 1988.
IE: MMYY = 0192 = Jan. 1992.

REPLACEMENT PARTS ILLUSTRATION FOR MODELS "M3282" and "D3282"



SK029

REPLACEMENT PARTS ILLUSTRATION FOR MODELS "N3282" and "E3282"



SK787