



Product information presented here reflects conditions at time of publication. Consult factory regarding discrepancies or inconsistencies.

MAIL TO: P.O. BOX 16347 • Louisville, KY 40256-0347  
SHIP TO: 3649 Cane Run Road • Louisville, KY 40211-1961  
(502) 778-2731 • 1 (800) 928-PUMP • FAX (502) 774-3624

visit our web site:  
<http://www.zoeller.com>

## REPLACEMENT PARTS LIST FOR MODELS:

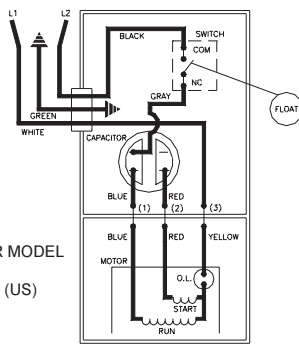
- H282 AUTOMATIC 200V/1PH
- I282 NON-AUTOMATIC 200V/1PH
- J282 NON-AUTOMATIC 200V/3PH
- F282 NON-AUTOMATIC 230V/3PH
- G282 NON-AUTOMATIC 460V/3PH

Consult factory for all other models

### TO ORDER REPLACEMENT PARTS:

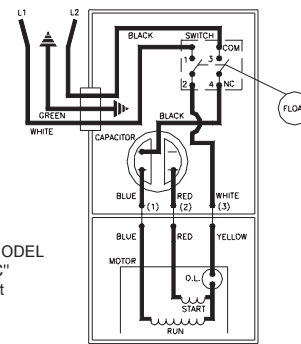
PLEASE FURNISH THE FOLLOWING INFORMATION:

- Model Number.
- Part Number of Pump.  
(If manufactured prior to June 1988, give 2 letter date code following Model No.)
- Part Number and Description of part.



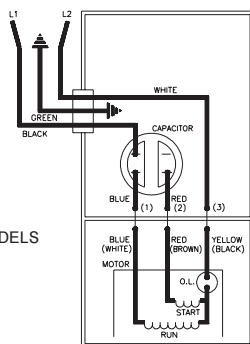
WIRING DIAGRAM FOR MODEL  
"H282-A"  
11/81 (XM) thru 8/86 (US)

002390



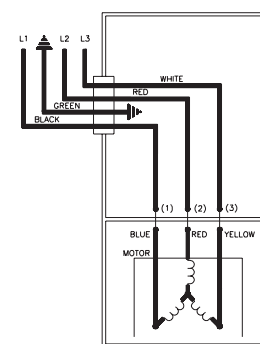
WIRING DIAGRAM FOR MODEL  
"H282-B" and "H282-C"  
9/86 (VS) thru Current

004621



WIRING DIAGRAM FOR MODELS  
"I282-A", "I282-B"  
and "I282-C"  
11/81 (XM) thru Current

002397



WIRING DIAGRAM FOR MODELS  
"F282-A, B, C", "J282-A, B, C",  
and "G282-A, B, C"  
11/81 (XM) thru Current

006848

# REPLACEMENT PARTS LIST FOR MODEL "H282"

# REPLACEMENT PARTS LIST FOR MODEL "I282"

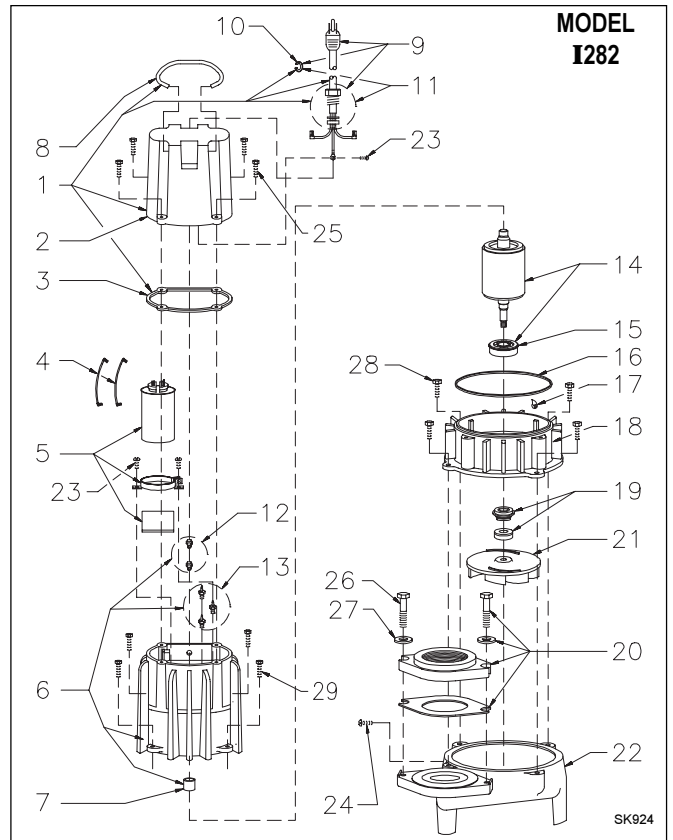
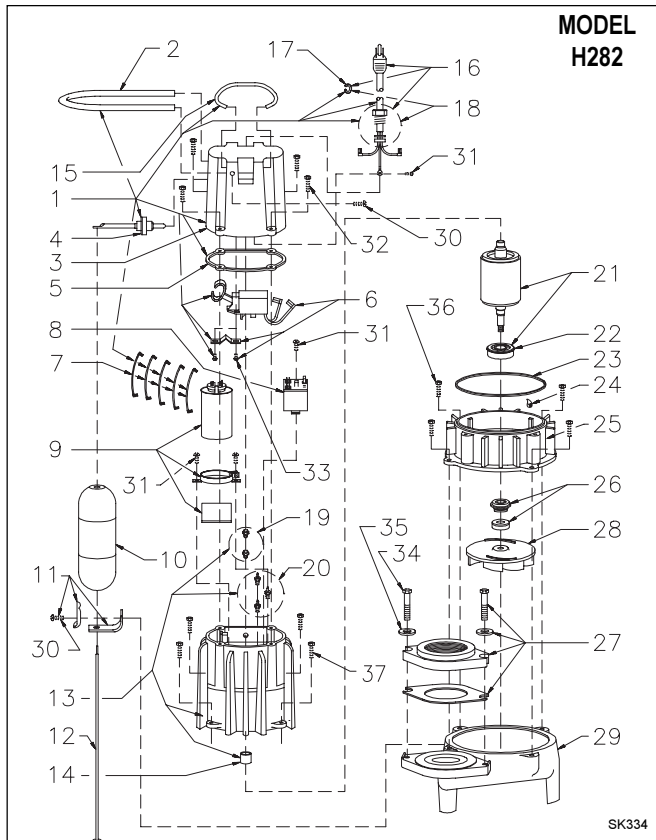
See "H282" illustration below.				MODEL: H282-A	H282-B	H282-C
REF. NO.	DESCRIPTION	QTY	NOTES	11/81 XM thru 8/86 US	9/86 VS thru 12/92	1/93 thru Current
1	Case Switch & Cd/200V/1Ph "282"	1	2,4	006932	006932	006932
2	Guard	1		001023	001023	001023
3	Case-Mach "160/180/280/290"	1	2,4	006932	004614	004614
4	Arm & Seal Asm "160/180/290"	1	2	002379	004745	004745
5	Gasket, Case/Cover	1		001011	001011	001011
6	Switch Asm "160/180/290"	1	2	002380	004755	004755
7	Lead Wire (Gray)	1		002609	NA	NA
8	Wire Pkg (5) Wires	1		003165	004756	004756
9	Relay 200V/1Ph G1 (&G5)	1		NA	NA	NA
10	Capacitor & Clamp Asm	1		002381	002381	002381
11	Float, Plastic	1		094039	094039	094039
12	Guide Asm, Flt Rod	1		094048	094048	094048
13	Rod Asm, Flt	1		001043	001043	001043
14	Housing, Mtr-& Str "282" GE	1	1,3,6	007601	007601	007601
15	Housing, Mtr-& Str "282" EMD	1	1,3,6	007602	007602	007602
16	Bearing, Sleeve	1		001012	001012	001012
17	Handle	1		217069	217069	217069
18	Cord Term & Seal Asm 200V/1Ph	1	2,4	006929	006930	006930
19	Clamp, Strain Relief-Red	1	4	001770	001770	001770
20	Seal, Cord-Asm & Strain Relief	1	4	094032	094032	094032
21	Plug, Test-White	2		034090	034090	034090
22	Seal, Thru Wall Term	3		003402	003402	003402
23	Rotor & Brg 200V/1Ph "282" GE	1	6	003167	003167	007978
24	Rotor & Brg 200V/1Ph "282" EMD	1	6	005540	005540	007979
25	Bearing, Lower Rotor	1		094106	094106	001013
26	Seal, Mtr Hsg	1		001014	001014	001014
27	Oil, Dielectric-(44 Oz Can)	1		003168	003168	003168
28	Adapter-Mach "280"	1		002357	001003	001003
29	Seal, Shaft "282", "284"	1		002946	002946	001015
30	Flange Pkg 2"Npt	1		217024	217024	217024
31	Flange Pkg 3"Npt	1		317024	317024	317024
32	Impeller "282"	1		002998	002998	002998
33	Housing, Pump-Mach	1		217012	217012	217012
34	Screw, #10-24 X.375 RHM-SI SS	2		001883	001883	001883
35	Screw, #6-32x.25RHM SI Tc Stlgr	4		001877	001877	001877
36	Screw, .25-20 X .75 HHm-SS	4		001916	001916	001916
37	Screw, #6-32x.438Rhsstp"1"Stlzi	2		001877	004644	004644
38	Screw, .5-13 X 2 HH Cap-SS	2		001909	001909	001909
39	Washer, SS-1.25"Odx.562"ldx.078	2		002115	002115	002115
40	Screw, .313-18 X 1"HH Cap-SS	4		002608	002608	002608
41	Screw, .25-20 X 1"RHM-SI Tc Stlgr	4		007790	007790	007790
42	Rebuild Kit "280"	1		003170	004758	007980

See "I282" illustration below.				MODEL: I282-A	I282-B	I282-C
REF. NO.	DESCRIPTION	QTY	NOTES	11/81 XM thru 8/86 US	9/86 XM thru Current	9/86 XM thru Current
1	Cover & Cord 200V/1Ph "280"	1	3	007073	007073	007073
2	Cover-Mach	1	3	001077	001077	001077
3	Gasket, Case/Cover	1		001011	001011	001011
4	Wire Pkg	1		003165	004756	004756
5	Capacitor & Clamp Asm	1		002381	002381	002381
6	Housing, Mtr-& Str "282" GE	1	1,2	007601	007601	007601
7	Housing, Mtr-& Str "282" EMD	1	1,2	007602	007602	007602
8	Bearing, Sleeve	1		001012	001012	001012
9	Handle	1		217069	217069	217069
10	Cord Term & Seal Asm 200V	1	3	007071	007071	007071
11	Clamp, Strain Relief-Red	1	3	001770	001770	001770
12	Seal, Cord-Asm & Strain Relief	1	3	094032	094032	094032
13	Plug, Test-White	2		034090	034090	034090
14	Seal, Thru Wall Term	3		003402	003402	003402
15	Rotor & Brg 200V/1Ph "282" GE	1	1,2	003167	003167	007978
16	Rotor & Brg 200V/1Ph "282" EMD	1	1,2	005540	005540	007979
17	Bearing, Lower Rotor	1		094106	094106	001013
18	Seal, Mtr Hsg	1		001014	001014	001014
19	Oil, Dielectric-(44 Oz Can)	1		003168	003168	003168
20	Adapter-Mach "280"	1		002357	002357	001003
21	Seal, Shaft "282", "284"	1		002946	002946	001015
22	Flange Pkg 2"Npt	1		217024	217024	217024
23	Flange Pkg 3"Npt	1		317024	317024	317024
24	Impeller "282"	1		002998	002998	002998
25	Housing, Pump-Mach	1		217012	217012	217012
26	Screw, #6-32X.25RHM SI Tc Stlgr	1		001877	001877	001877
27	Screw, #10-24 X.375 RHM-SI SS	1		001883	001883	001883
28	Screw, .25-20 X .75 HHm-SS	4		001916	001916	001916
29	Screw, .5-13 X 2 HH Cap-SS	2		001909	001909	001909
30	Washer, SS-1.25"Odx.562"ldx.078	2		002115	002115	002115
31	Screw, .313-18 X 1"HH Cap-SS	4		002608	002608	002608
32	Screw, .25-20X1" RHM-SI Tc Stlgr	4		007790	007790	007790
33	Rebuild Kit "280"	1		003170	004758	010077

• Items included in Rebuild Kit.

□ Not shown in illustration.

SEE CORRESPONDING NOTES ON PAGE 4



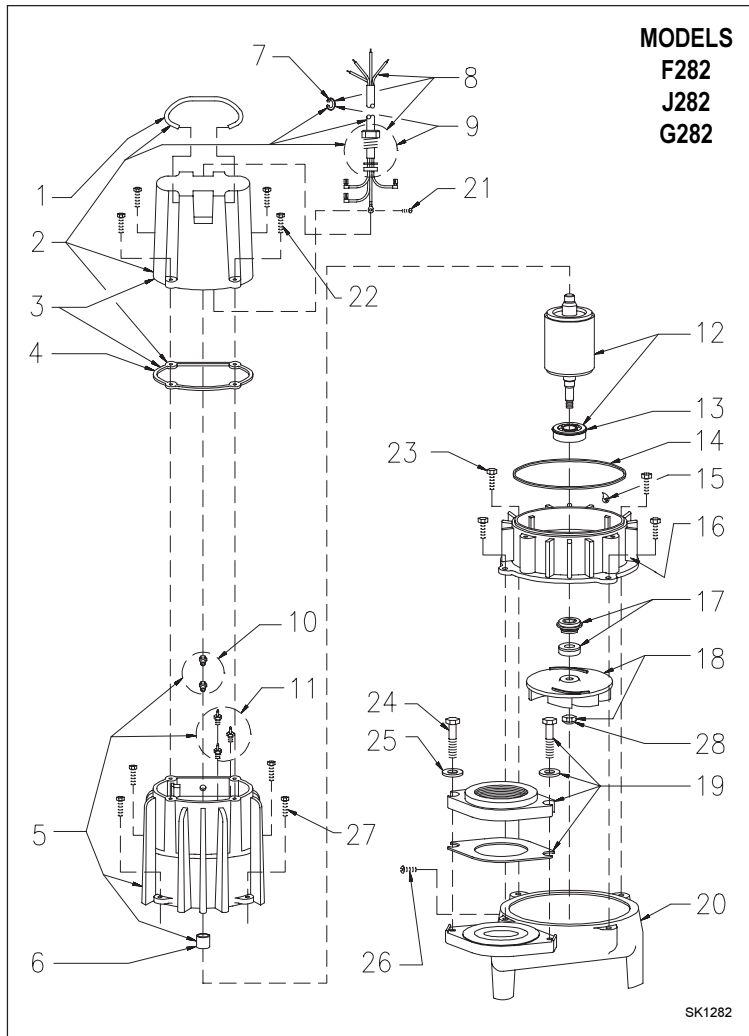
**REPLACEMENT PARTS LIST FOR MODEL "F282"**

**REPLACEMENT PARTS LIST FOR MODEL "J282"**

See "F282" illustration below.		MODEL: F282-A F282-B F282-C				
REF. NO.	DESCRIPTION	QTY	NOTES	11/81 XM thru 8/86 US	9/86 VS thru 12/92	1/93 thru Current
1	• Handle	1		217069	217069	217069
2	• Cover & Cord 230V/3Ph "280"	1	3	003760	003760	003760
3	• Cover-Mach	1	3	001077	001077	001077
4	• Gasket, Case/Cover	1		001011	001011	001011
5	• Housing, Mtr- & Str "282" GE	1	1,2	007662	007662	007662
6	• Housing, Mtr- & Str "282" EMD	1	1,2	007663	007663	007663
7	• Bearing, Sleeve	1		001012	001012	001012
8	• Clamp, Strain Relief-Red	1	3	001770	001770	001770
9	• Cord Term & Seal Asm 3Ph	1	3	003761	003761	003761
10	• Seal, Cord-Asm & Strain Relief	1	3	094032	094032	094032
11	• Plug, Test-White	2		034090	034090	034090
12	• Seal, Thru Wall Term	3		003402	003402	003402
13	• Rotor & Brg 230V/3Ph "282" GE	1	2	007062	007062	009495
14	• Rotor & Brg 230V/3Ph "282" EMD	1	2	007661	007661	009496
15	• Bearing, Lower Rotor	1		094106	094106	001013
16	• Seal, Mtr Hsg	1		001014	001014	001014
17	• Oil, Dielectric-(44 Oz Can)	1		003168	003168	003168
18	• Adapter-Mach "280"	1		002357	002357	001003
19	• Seal, Shaft "282", "284"	1		002946	002946	001015
20	• Impeller "282"	1		007063	007063	007063
21	• Flange Pkg 2"Npt	1		217024	217024	217024
22	• Flange Pkg 3"Npt	1		317024	317024	317024
23	• Housing, Pump-Mach	1		217012	217012	217012
24	• Screw, #6-32X.25RHM SI Tc Stlgr	1		001877	001877	001877
25	• Screw, .25-20 X .75 HHm-SS	4		001916	001916	001916
26	• Screw, .313-18 X 1" HH Cap-SS	4		002608	002608	002608
27	• Screw, .5-13 X 2 HH Cap-SS	2		001909	001909	001909
28	• Washer, SS-1.25"Odx.562"Idx.078	2		002115	002115	002115
29	• Screw, #10-24 X .375 RHM-SI SS	1		001883	001883	001883
30	• Screw, .25-20X1" RHM-SI Tc Stlgr	4		007790	007790	007790
31	• Rebuild Kit "280"	1		003170	004758	010077

See "J282" illustration below.		MODEL: J282-A J282-B J282-C				
REF. NO.	DESCRIPTION	QTY	NOTES	11/81 XM thru 8/86 US	9/86 XM thru 12/92	1/93 thru Current
1	• Handle	1		217069	217069	217069
2	• Cover & Cord 200V/3Ph "280"	1	3	003760	003760	003760
3	• Cover-Mach	1	3	001077	001077	001077
4	• Gasket, Case/Cover	1		001011	001011	001011
5	• Housing, Mtr- & Str "282" GE	1	1,2	007662	007662	007662
6	• Housing, Mtr- & Str "282" EMD	1	1,2	007663	007663	007663
7	• Bearing, Sleeve	1		001012	001012	001012
8	• Clamp, Strain Relief-Red	1	3	001770	001770	001770
9	• Cord Term & Seal Asm 3Ph	1	3	003761	003761	003761
10	• Seal, Cord-Asm & Strain Relief	1	3	094032	094032	094032
11	• Plug, Test-White	2		034090	034090	034090
12	• Seal, Thru Wall Term	3		003402	003402	003402
13	• Rotor & Brg 200V/3Ph "282" GE	1	2	007062	007062	009495
14	• Rotor & Brg 200V/3Ph "282" EMD	1	2	007661	007661	009496
15	• Bearing, Lower Rotor	1		094106	094106	001013
16	• Seal, Mtr Hsg	1		001014	001014	001014
17	• Oil, Dielectric-(44 Oz Can)	1		003168	003168	003168
18	• Adapter-Mach "280"	1		002357	002357	001003
19	• Seal, Shaft "282", "284"	1		002946	002946	001015
20	• Impeller "282"	1		007063	007063	007063
21	• Flange Pkg 2"Npt	1		217024	217024	217024
22	• Flange Pkg 3"Npt	1		317024	317024	317024
23	• Housing, Pump-Mach	1		217012	217012	217012
24	• Screw, #6-32X.25RHM SI Tc Stlgr	1		001877	001877	001877
25	• Screw, .25-20 X .75 HHm-SS	4		001916	001916	001916
26	• Screw, .313-18 X 1" HH Cap-SS	4		002608	002608	002608
27	• Screw, .5-13 X 2 HH Cap-SS	2		001909	001909	001909
28	• Washer, SS-1.25"Odx.562"Idx.078	2		002115	002115	002115
29	• Screw, #10-24 X .375 RHM-SI SS	1		001883	001883	001883
30	• Screw, .25-20X1" RHM-SI Tc Stlgr	4		007790	007790	007790
31	• Rebuild Kit "280"	1		003170	004758	010077

• Items included in Rebuild Kit.      □ Not shown in illustration.      **SEE CORRESPONDING NOTES ON PAGE 4**



**DATE CODE OF MANUFACTURE  
FROM 12/70 TO 12/88**

<b>1st LETTER MONTH</b>		<b>2nd LETTER YEAR</b>		
M — JAN.	T — JULY	A — 1971	G — 1977	O — 1983
N — FEB.	U — AUG.	B — 1972	H — 1978	P — 1984
O — MARCH	V — SEPT.	C — 1973	I — 1979	R — 1985
P — APRIL	W — OCT.	D — 1974	J — 1980	S — 1986
R — MAY	X — NOV.	E — 1975	M — 1981	T — 1987
S — JUNE	Y — DEC.	F — 1976	N — 1982	U — 1988

## REPLACEMENT PARTS LIST FOR MODEL "G282"

See "G282" illustration on page 3.				MODEL: G282-A	G282-B	G282-C
REF. NO.	DESCRIPTION	QTY	NOTES	11/81 XM thru 8/86 US	9/86 XM thru 12/92	1/93 thru CURRENT
1	• Handle	1		217069	217069	217069
2	• Cover & Cord 460V/3PH "280"	1	3	003760	003760	003760
3	• Cover-Mach	1	3	001077	001077	001077
4	• Gasket, Case/Cover	1		001011	001011	001011
5	{ Housing, Mtr- & Str 460V/3Ph GE	1	1,2	007662	007662	007662
	{ Housing, Mtr- & Str 460V/3Ph EMD	1	1,2	007663	007663	007663
6	• Bearing, Sleeve	1		001012	001012	001012
7	• Clamp, Strain Relief-Red	1	3	001770	001770	001770
8	• Cord Term & Seal Asm 460V	1	3	003761	003761	003761
9	• Seal, Cord-Asm & Strain Relief	1	3	094032	094032	094032
10	• Plug, Test-White	2		034090	034090	034090
11	• Seal, Thru Wall Term	3		003402	003402	003402
12	{ Rotor & Brg 460V/3Ph GE	1	2	007062	007062	009495
	{ Rotor & Brg 460V/3Ph EMD	1	2	007661	007661	009496
13	• Bearing, Lower Rotor	1		094106	094106	001013
14	• Seal, Mtr Hsg	1		001014	001014	001014
15	• Oil, Dielectric-(44 Oz Can)	1		003168	003168	003168
16	• Adapter-Mach "280"	1		002357	002357	001003
17	• Seal, Shaft "282", "284"	1		002946	002946	002430
18	• Impeller "284"	1		007063	007063	007063
19	{ Flange Pkg 2"Npt	1		217024	217024	217024
	{ Flange Pkg 3"Npt	1		317024	317024	317024
20	• Housing, Pump-Mach	1		217012	217012	217012
21	• Screw, #6-32x.25RHM SI Tc Stlgr	1		001877	001877	001877
22	• Screw, .25-20 X .75 HHm-SS	4		001916	001916	001916
23	• Screw, .313-18 X 1"HH Cap-SS	4		002608	002608	002608
24	• Screw, .5-13 X 2 HH Cap-SS	2		001909	001909	001909
25	• Washer, SS-1.25"Odx.562"Idx.078	2		002115	002115	002115
26	• Screw, #10-32 X.375 RHM-SI SS	1		001883	001883	001883
27	• Screw, .25-20 X 1 RHM-SI Tc Stlgr	4		007790	007790	007790
☐	Rebuild Kit "280"	1		003170	004758	010077

• Items included in Rebuild Kit.

☐ Not shown in illustration.

**NOTES :**

- 1) Mtr. Hsg., Brg., Stator & Term. are preassembled at the factory and must be replaced as a unit. Stator is permanently attached to the motor Housing. Plug; Seal, Thru Wall Term. and Bearing - Upper are replaceable.
- 2) When ordering these parts, customer must identify if switch is a General Electric switch.
- 3) If an "X" follows Model No., or Date Mfg. on brass ID tag, consult factory for ordering of this part.
- 4) See FM0160 Parts Price Sheet for listing of parts prices.
- 5) "NA" indicates, not applicable.
- 6) When ordering motor housing, bearing, stator and term. or rotor specify either GE or Emerson motor. GE motor can be identified by (4) holes spaced around at 90° around the outside diameter of the stator. Emerson motor can be identified by (4) flat edges spaced at 90° around the outside diameter of the stator.



<http://www.zoeller.com>



MAIL TO: P.O. BOX 16347  
 Louisville, KY 40256-0347  
 SHIP TO: 3649 Cane Run Road  
 Louisville, KY 40211-1961  
 (502) 778-2731 • 1(800) 928-PUMP  
 FAX (502) 774-3624

Manufacturers of . . .

*"QUALITY PUMPS SINCE 1939"*