

Product information presented here reflects conditions at time of publication. Consult factory regarding discrepancies or inconsistencies.

MAIL TO: P.O. BOX 16347 • Louisville, KY 40256-0347  
SHIP TO: 3649 Cane Run Road • Louisville, KY 40211-1961  
(502) 778-2731 • 1 (800) 928-PUMP • FAX (502) 774-3624

visit our web site:  
[www.zoeller.com](http://www.zoeller.com)

# ZOELLER ON-SITE WASTEWATER PRODUCTS

## INTRODUCING ZOELLER SEPTIC SYSTEM FILTERS



### Zoeller Pressure Effluent Filter

### INSTALLATION INSTRUCTIONS

#### Application

Use this filter to deliver effluent under pressure with particle sizes not exceeding 1/16" diameter. Add a filter sock and filter to 100 or 600 microns. Applications include LPP, sand filters, pressure dosed wetlands, enhanced flow, drip distribution and most pressure applications.

#### Installation

Determine the discharge pipe length needed from pump to filter. Install a 2" PVC discharge pipe for the 5000-0001 or a 3" PVC discharge pipe for the 5000-0008. Note: Pumps with a smaller discharge size may be adapted to fit. Glue the filter to the end of the discharge pipe. Glue a 6" long PVC pipe to a schedule 80 PVC union and glue this assembly to the discharge of the filter. Plumb the force main into the union and glue. NOTE: Use PVC cleaner and glue on all glued joints.

#### Service

The Zoeller Pressure Effluent Filter requires periodic service. The optional service alarm switch will indicate when service is needed. A tank equipped with a high water alarm will indicate a clogged filter condition. Excessive pump run times may indicate a clogged filter. At a minimum, service the filter each time the septic tank and pump chamber are serviced. Check with your local health department for pumping recommendations.

To service the filter screen disconnect power to the pump and unscrew the 4" cap. Pull the filter screen from the canister and wash it out thoroughly in appropriate location with proper protection. Reinsert the cleaned filter screen, replace the 4" cap and restore power to the pump. In some cases, an additional filter screen allows quicker service allowing the dirty filter to be washed later at an appropriate place and convenient time.

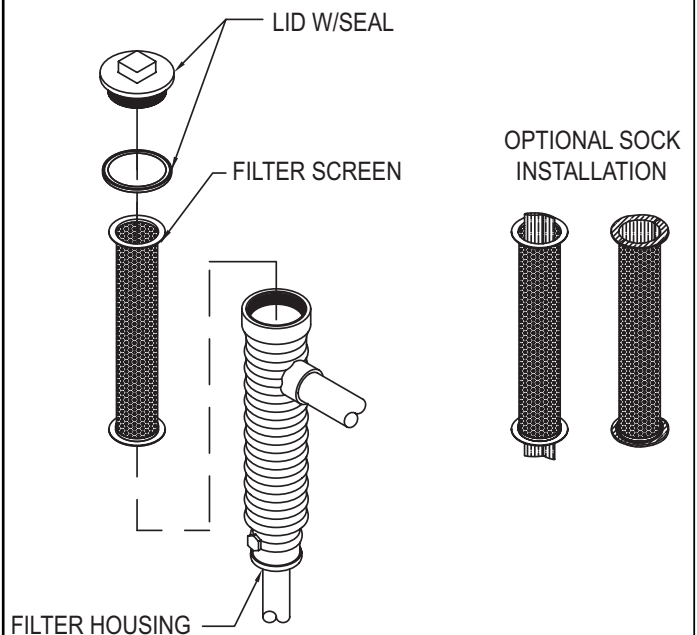
If the system is equipped with our Service Alarm Switch, the filter screen does not need service until the Service Alarm Switch activates a light or audio alarm.

NOTE: The total dynamic head loss of the system must be increased by 0.5 feet of head to overcome the friction loss of the filter. See FM2090 for friction loss chart

#### Sock Installation

To install the sock in a standard filter screen, remove the 1/16" diameter SS wire handle by straightening out the 90° bend in the wire handle with pliers and removing it from the filter screen. This is done because the sock is installed inside of the filter screen and it is very important that the screen supports the sock when in operation.

At this time, the sock can be placed inside the canister screen and wrapped around the seating surfaces on the top and bottom. This will lock the sock in place simultaneously with the filter when it is secured. The sock is a 100 micron thermal nylon or 600 micron seamless knitted polyester with 100 psi burst strength. The sock is several inches longer than the filter screen so as to allow the sock to be pulled around the filter screen flanges and secured as shown below.



SK2208A

ALL ZOELLER ON-SITE WASTEWATER PRODUCTS MUST BE INSTALLED IN ACCORDANCE WITH LOCAL AND/OR STATE PLUMBING AND/OR HEALTH DEPARTMENT CODES AND/OR THE NATIONAL ELECTRICAL CODE (NEC).

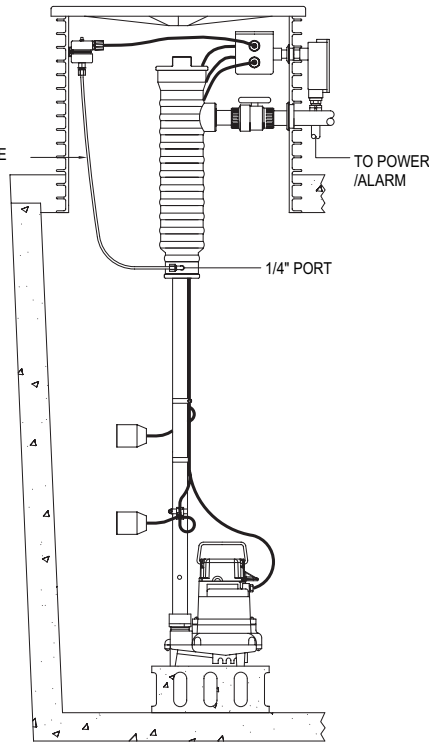
# Pressure Switch Installation P/N 5000-0006

1. Install the Pressure Switch in the upper part of the tank riser as in steps 2 through 5.

2. Attach the switch mount to the side of the riser. If the riser is plastic, peel off the paper backing, stick it to the riser and secure it with a screw. If the riser is cement, use a plastic anchor and screw.

3. Attach the switch to the mount with a strap. Make sure the strap is in the groove of the switch. Snug the strap to secure the switch.

4. Route the 1/4" tubing down to the 1/4" port on the filter or where the pressure is to be monitored. Remove plug in 1/4" port. Apply Teflon tape to 1/4" male threads on the 90° fitting. Install the 90° fitting in the 1/4" port. Install the 1/4" tube in the 90° fitting and tighten to seal.

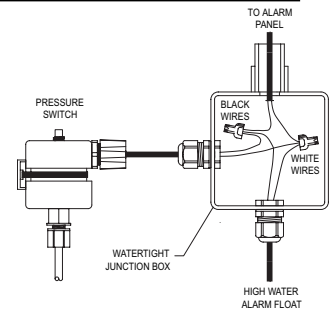


SK2208B

**CAUTION**

Be sure the tubing does not interfere with moving parts, floats, valves, etc.

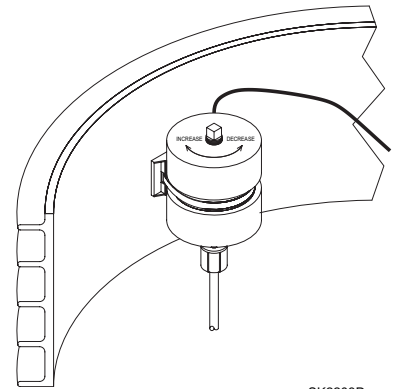
5. Route the wire safely out of the tank with other wires to the alarm. The pressure switch can be wired with a high level float or on its own.



SK2208C

6. To adjust the switch:

- A. Remove the 1/8" plug on top of the switch and insert the 7/32" hex wrench.
- B. Start the pump. Let it run for one minute to allow the pipes to fill. If the alarm sounds, turn the switch adjustment CW one turn to increase the pressure. Reset the alarm and repeat this step until no alarm is triggered by the switch.
- C. With the pump running and the alarm reset, turn the wrench CCW until the alarm sounds (or lights). This is your running pressure.
- D. Now turn the wrench one full turn CW. This is approximately 3 psi above your running pressure. If nuisance tripping of the alarm occurs, increase the pressure by turning CW in small amounts until it stops.
- E. **IMPORTANT!** Replace the 1/8" plug after adjusting the switch.



SK2208D

## Limited Warranty

Manufacturer warrants, to the purchaser and subsequent owner during the warranty period, every new product to be free from defects in material and workmanship under normal use and service, when properly used and maintained, for a period of one year from date of purchase by the end user, or 18 months from date of original manufacture of the product, whichever comes first. Parts that fail within the warranty period, one year from date of purchase by the end user, or 18 months from the date of original manufacture of the product, whichever comes first, that inspections determine to be defective in material or workmanship, will be repaired, replaced or remanufactured at Manufacturer's option, provided however, that by so doing we will not be obligated to replace an entire assembly, the entire mechanism or the complete unit. No allowance will be made for shipping charges, damages, labor or other charges that may occur due to product failure, repair or replacement.

This warranty does not apply to and there shall be no warranty for any material or product that has been disassembled without prior approval of Manufacturer, subjected to misuse, misapplication, neglect, alteration, accident or act of God; that has not been installed, operated or maintained in accordance with Manufacturer's installation instructions; that has been exposed to outside substances including but not limited to the following: sand, gravel, cement, mud, tar, hydrocarbons, hydrocarbon derivatives (oil, gasoline, solvents, etc.), or other abrasive or corrosive substances, wash towels or feminine

sanitary products, etc. in all pumping applications. The warranty set out in the paragraph above is in lieu of all other warranties expressed or implied; and we do not authorize any representative or other person to assume for us any other liability in connection with our products.

Contact Manufacturer at, 3649 Cane Run Road, Louisville, Kentucky 40211, Attention: Customer Service Department to obtain any needed repair or replacement of part(s) or additional information pertaining to our warranty.

**MANUFACTURER EXPRESSLY DISCLAIMS LIABILITY FOR SPECIAL, CONSEQUENTIAL OR INCIDENTAL DAMAGES OR BREACH OF EXPRESSED OR IMPLIED WARRANTY; AND ANY IMPLIED WARRANTY OF FITNESS FOR A PARTICULAR PURPOSE AND OF MERCHANTABILITY SHALL BE LIMITED TO THE DURATION OF THE EXPRESSED WARRANTY.**

Some states do not allow limitations on the duration of an implied warranty, so the above limitation may not apply to you. Some states do not allow the exclusion or limitation of incidental or consequential damages, so the above limitation or exclusion may not apply to you.

This warranty gives you specific legal rights and you may also have other rights which vary from state to state.