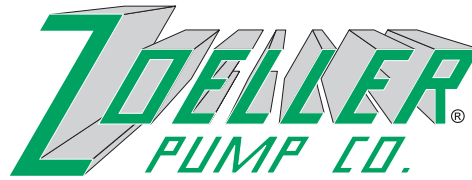


"QUALITY PUMPS SINCE 1939"



SECTION: 3.20.030
FM1552
0705
Supersedes
0604

Product information presented here reflects conditions at time of publication. Consult factory regarding discrepancies or inconsistencies.

MAIL TO: P.O. BOX 16347 • Louisville, KY 40256-0347
SHIP TO: 3649 Cane Run Road • Louisville, KY 40211-1961
(502) 778-2731 • 1 (800) 928-PUMP • FAX (502) 774-3624

visit our web site:
www.zoeller.com

ZOELLER ON-SITE WASTEWATER PRODUCTS

INTRODUCING ZOELLER SEPTIC SYSTEM FILTERS

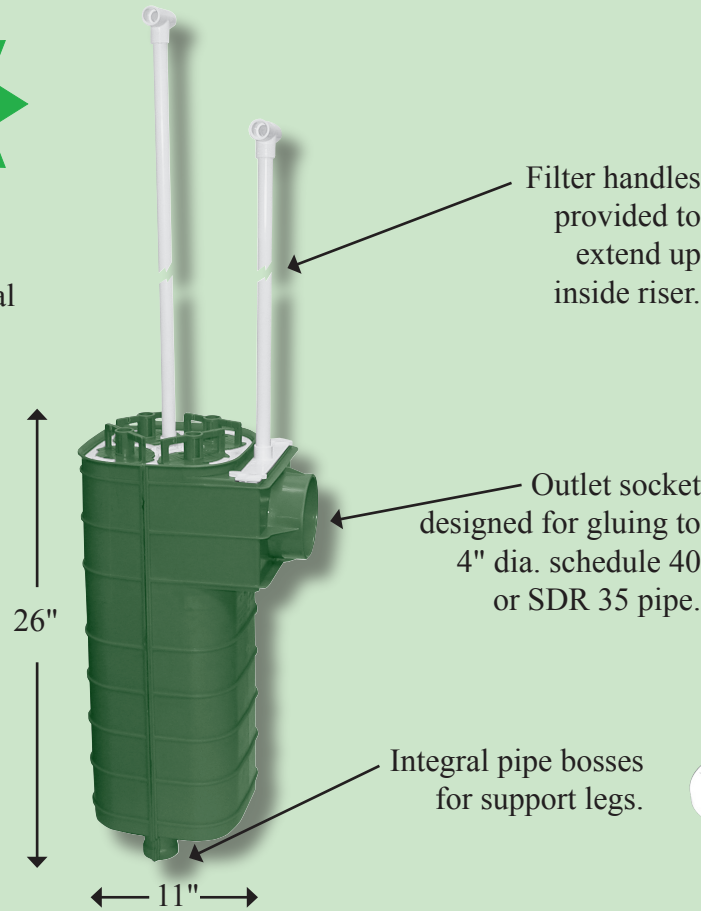
Zoeller Deluxe/Commercial Septic Tank Effluent Filter P/N 5000-0007



Application:
Residential and Commercial septic tank filter.

Filter Area:
528 linear feet of 1/16" filtration.

Flow Rate:
4,000 GPD



Filter handles provided to extend up inside riser.

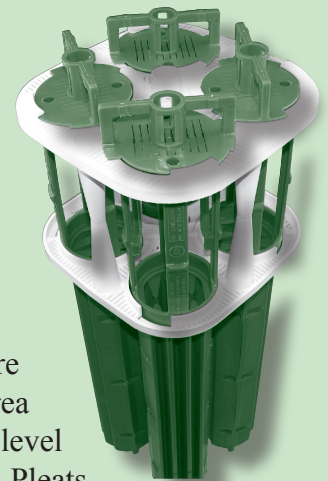
Outlet socket designed for gluing to 4" dia. schedule 40 or SDR 35 pipe.

Integral pipe bosses for support legs.

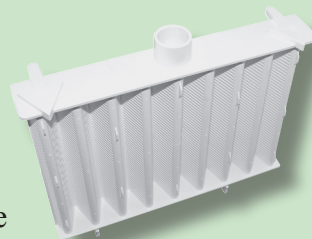


Covered by US Patent Numbers 6,136,190; 6,331,247 and 6,495,040

PRIMARY FILTER



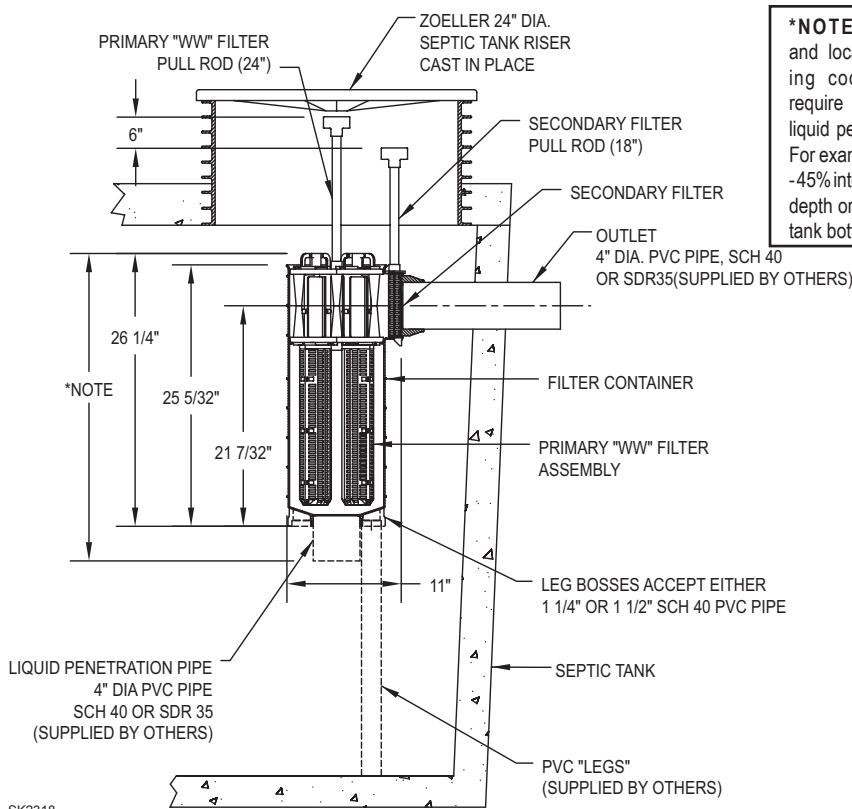
SECONDARY FILTER



By-Pass Protection:
Secondary filter remains in the outlet when the primary filter is removed for servicing. Solids are prevented from leaving the tank.

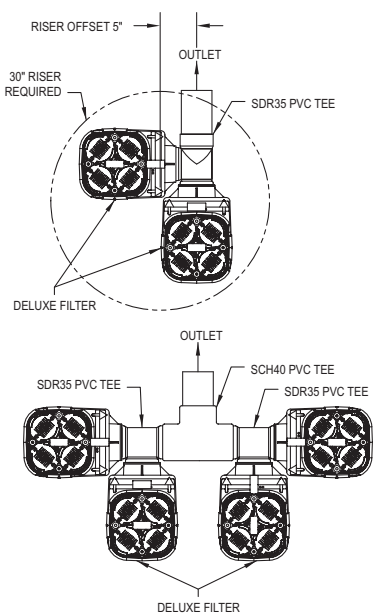
Deep Pleated Construction:
Design adds more effective filter area below the water level where it matters. Pleats retain solids to aid in servicing.

Deluxe Effluent Filter Specifications



***NOTE:** State and local plumbing codes may require a specific liquid penetration. For example, 25% -45% into the liquid depth or 9" off the tank bottom.

Covered by US Patent Numbers 6,136,190, 6,331,247 and 6,495,040



Filters may be manifolded together to provide additional flow rate.

Application: Any residential or commercial filtering application.
Filter Area: 528 Linear feet of 1/16" filtration slots.
Flow Rate: 4,000 gpd.

Application: For commercial filtering requiring 1/32" filtering, add Filter Sock P/N 5000-0010 to Deluxe Filter.
Filter Area: 960 square inches of 1/32" filtration.
Flow Rate: 1,500 gpd.

Materials: All materials are noncorrosive in the septic tank environment (PVC, ABS, and Polyethylene).

Replacement Parts: Primary "WW" Filter Assembly P/N 5000-0011. Secondary Filter Assembly P/N 5000-0012. Filter Sock P/N 5000-0010.

Easy to maintain: This filter will require periodic service. By needing service, this filter facilitates needed system inspections and maintenance. Modern septic tanks can be

affected by some common household chemicals and fail to digest waste. Under those circumstances, the Zoeller filter will protect ALL downstream components. If your filter clogs frequently, your tank is likely not operating correctly.

The Zoeller filter should be cleaned each time the septic tank is pumped or as needed. More frequent cleaning will not hurt the filter and could even improve the performance of your septic tank. For installations that exceed the design flow rate of one filter, use a manifold type arrangement to add as many filters as required. To clean, simply withdraw the primary element filter (long handle) and rinse back into the septic tank. Next, after the flow has stopped, remove the secondary filter (short handle), rinse and replace.

Lifetime Warranty: Every Zoeller filter is guaranteed to be free from defects in materials and workmanship for the lifetime of the homeowner/purchaser. Free repair or replacement, excluding labor, will be made on return of the filter prepaid to the factory. This warranty is limited to product proven to be free from abuse or improper installation.

ALL ZOELLER ONSITE PRODUCTS MUST BE INSTALLED IN ACCORDANCE WITH PLUMBING AND HEALTH DEPARTMENT CODES.

Distributed By:



1-800-928-PUMP
 www.zoeller.com