

"QUALITY PUMPS SINCE 1939"

Product information presented here reflects conditions at time of publication. Consult factory regarding discrepancies or inconsistencies.



SECTION: 6.10.356

FM1489

0703

Supersedes

0701

MAIL TO: P.O. BOX 16347 • Louisville, KY 40256-0347
 SHIP TO: 3649 Cane Run Road • Louisville, KY 40211-1961
 (502) 778-2731 • 1 (800) 928-PUMP • FAX (502) 774-3624

visit our web site:
<http://www.zoeller.com>

REPLACEMENT PARTS LIST FOR MODELS:

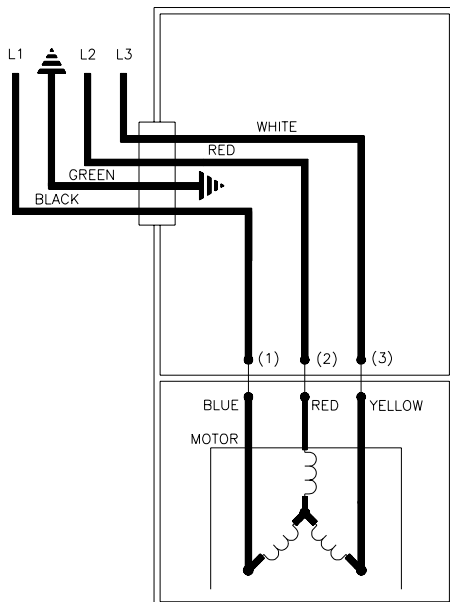
- E4291 NONAUTOMATIC/DOUBLE SEAL 230V/1PH
- I4291 NONAUTOMATIC/DOUBLE SEAL 200V/1PH
- F4291 NONAUTOMATIC/DOUBLE SEAL 230V/3PH
- G4291 NONAUTOMATIC/DOUBLE SEAL 460V/3PH
- J4291 NONAUTOMATIC/DOUBLE SEAL 200V/3PH
- BA4291 NONAUTOMATIC/DOUBLE SEAL 575V/3PH

Consult factory for all other models

TO ORDER REPLACEMENT PARTS:

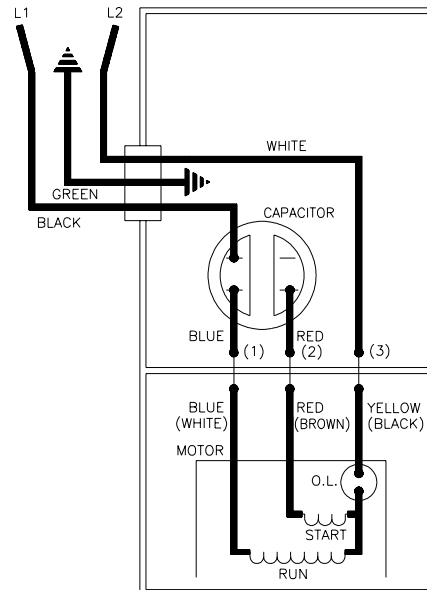
PLEASE FURNISH THE FOLLOWING INFORMATION:

- Model Number.
- Part Number of Pump.
- Part Number and Description of part.



006848

WIRING DIAGRAM FOR MODELS
 "F4291-A thru B", "G4291-A thru B",
 "J4291-A thru B" & "BA4291-A thru B"
 3/96 thru Current



002397B

WIRING DIAGRAM FOR MODELS
 "E4291-A thru B" & "I4291-A thru B"
 3/96 thru Current

REPLACEMENT PARTS LIST FOR: "E4291 WITHOUT MOISTURE SENSORS" & "E4291 WITH MOISTURE SENSORS".

REF. NO.	DESCRIPTION	QTY	NOTES	MODELS:			QTY	NOTES	MODELS:		
				E4291-A	E4291-B	E4291-C			E4291-A*	E4291-B*	E4291-C*
				3/96 thru 7/01	8/01 thru 04/03	05/03 thru Current			3/96 thru 7/01	8/01 thru 04/03	05/03 thru Current
1	•Handle	1		217069	217069	217069	1		217069	217069	217069
2	•Cover & Cordage 12/3	1	5	011084	011084	016107	1	5	011087	011087	016109
3	•Cover-Mach & Handle Asm	1	5	011067	011067	016104	1	5	011078	011078	016105
4	•Gasket,Case/Cover	1		001011	001011	001011	1		001011	001011	001011
5	•Wire Pkg (2) Wires	1		011062	011062	011062	1		011062	011062	011062
6	•Capacitor & Clamp Asm 35uF	1		006135	006135	006135	1		006135	006135	006135
7	•Housing,Mtr-& Stator	1	1	004993	004993	004993	1	1	011814	011814	011814
8	•Bearing,Sleeve-Bronze	1		001012	001012	001012	1		001012	001012	001012
9	•Cordage,Terminal & Seal 50' 12-3	1	5	011085	011085	016111	1	5	011085	011085	016111
10	•Sensor Cordage Term. & Seal 50'	N/A		N/A	N/A	N/A	1		011060	011060	011060
11	•Seal,Cord-Asm & Strain Relief	1	5	004375	004375	015634	1	5	004375	004375	015634
12	•Plug,Test White	3		034090	034090	034090	3		034090	034090	034090
13	•Seal,Thru Wall Term.	3		003402	003402	003402	7		003402	003402	003402
14	•Rotor & Brg. Asm.	1		011086	011086	011086	1		011086	011086	011086
15	•Washer,Seal Locating& Snap Ring	1		011057	011057	011057	1		011057	011057	011057
16	•Bearing,7303	1		009861	009861	009861	1		009861	009861	009861
17	•Seal,Mtr. Hsg.	2		001014	001014	001014	2		001014	001014	001014
18	•Oil,Dielectric-(57 oz can)	1		011066	011066	011066	1		011066	011066	011066
19	•Adapter-Mach. Upper	1		008862	008862	008862	1		008835	008835	008835
20	•Seal,Shaft - Upper	1	6	002430	014675	014675	1	6	002430	014675	014675
	•Seal,Shaft - Lower	1	7	002430	014642	014642	1	7	002430	014642	014642
21	•Adapter-Mach Lower	1		008833	008833	008833	1		008833	008833	008833
22	•Impeller "4291"	1		011088	011088	011088	1		011088	011088	011088
23	•Flange Pkg 2"NPT	1		217024	217024	217024	1		217024	217024	217024
	•Flange Pkg 3"NPT	1		317024	317024	317024	1		317024	317024	317024
24	•Housing,Pump-Mach "4290/4291"	1		009349	009349	009349	1		009349	009349	009349
25	•Screw,#6-32 x .25RHM SL Tc Stlgr	3		001877	001877	001877	3		001877	001877	001877
26	•Screw,.25-20 x .75 HHm-SS	4		001916	001916	001916	4		001916	001916	001916
27	•Screw,.25-20 x 1 HHm-SS	4		007790	007790	007790	4		007790	007790	007790
28	•Screw,.5-13 x 2 HH Cap-SS	2		001909	001909	001909	2		001909	001909	001909
29	•Washer,SS-1.25Od x .562ld x .078	2		002115	002115	002115	2		002115	002115	002115
30	•Screw,.313-18 x 1 HH Cap-SS	8		002608	002608	002608	8		002608	002608	002608
31	•Wire,Asm-Mst Sensor	N/A		N/A	N/A	N/A	2		009128	009128	009128
32	•Seal,Sensor Cd Asm. & Strain Relief	N/A		N/A	N/A	N/A	1		011064	011064	011064
▫	•Rebuild Kit	1		011095	011095	016244	1		011095	011095	016244

• Items included in Rebuild Kit. ▫ Not shown in illustration. * With Moisture Sensors

REPLACEMENT PARTS LIST FOR: "I4291" & "J4291".

REF. NO.	DESCRIPTION	QTY	NOTES	MODELS:			QTY	NOTES	MODELS:		
				I4291-A	I4291-B	I4291-C			J4291-A	J4291-B	J4291-C
				3/96 thru 7/01	8/01 thru 04/03	05/03 thru Current			3/96 thru 7/01	8/01 thru 04/03	05/03 thru Current
1	•Handle	1		217069	217069	217069			217069	217069	217069
2	•Cover & Cordage 12/3	1	5	011084	011084	016107			011089	011089	016108
3	•Cover-Mach & Handle Asm	1	5	011067	011067	016104			011067	011067	016104
4	•Gasket,Case/Cover	1		001011	001011	001011			001011	001011	001011
5	•Wire Pkg (2) Wires	1		011062	011062	011062			N/A	N/A	N/A
6	•Capacitor & Clamp Asm 35uF	1		006135	006135	006135			N/A	N/A	N/A
7	•Housing,Mtr-& Stator	1	1	005204	005204	005204			005132	005132	005132
8	•Bearing,Sleeve-Bronze	1		001012	001012	001012			001012	001012	001012
9	•Cordage,Terminal & Seal 50' 12-3	1	5	011085	011085	016111			011091	011091	016112
10	•Sensor Cordage Term. & Seal 50'	N/A		N/A	N/A	N/A			N/A	N/A	N/A
11	•Seal,Cord-Asm & Strain Relief	1	5	004375	004375	015634			004375	004375	015634
12	•Plug,Test White	3		034090	034090	034090			034090	034090	034090
13	•Seal,Thru Wall Term.	3		003402	003402	003402			003402	003402	003402
14	•Rotor & Brg. Asm.	1		011086	011086	011086			011081	011081	011081
15	•Washer,Seal Locating& Snap Ring	1		011057	011057	011057			011057	011057	011057
16	•Bearing,7303	1		009861	009861	009861			009861	009861	009861
17	•Seal,Mtr. Hsg.	2		001014	001014	001014			001014	001014	001014
18	•Oil,Dielectric-(57 oz can)	1		011066	011066	011066			011066	011066	011066
19	•Adapter-Mach. Upper	1		008862	008862	008862			008862	008862	008862
20	•Seal,Shaft - Upper	1	6	002430	014675	014675			002430	014675	014675
	•Seal,Shaft - Lower	1	7	002430	014642	014642			002430	014642	014642
21	•Adapter-Mach Lower	1		008833	008833	008833			008833	008833	008833
22	•Impeller "4291"	1		011088	011088	011088			011082	011082	011082
23	•Flange Pkg 2"NPT	1		217024	217024	217024			217024	217024	217024
	•Flange Pkg 3"NPT	1		317024	317024	317024			317024	317024	317024
24	•Housing,Pump-Mach "4290/4291"	1		009349	009349	009349			009349	009349	009349
25	•Screw,#6-32 x .25RHM SL Tc Stlgr	3		001877	001877	001877			001877	001877	001877
26	•Screw,.25-20 x .75 HHm-SS	4		001916	001916	001916			001916	001916	001916
27	•Screw,.25-20 x 1 HHm-SS	4		007790	007790	007790			007790	007790	007790
28	•Screw,.5-13 x 2 HH Cap-SS	2		001909	001909	001909			001909	001909	001909
29	•Washer,SS-1.25Od x .562ld x .078	2		002115	002115	002115			002115	002115	002115
30	•Screw,.313-18 x 1 HH Cap-SS	8		002608	002608	002608			002608	002608	002608
31	•Wire,Asm-Mst Sensor	N/A		N/A	N/A	N/A			N/A	N/A	N/A
32	•Seal,Sensor Cd Asm. & Strain Relief	N/A		N/A	N/A	N/A			N/A	N/A	N/A
▫	•Rebuild Kit	1		011095	011095	016244			011095	011095	016244

• Items included in Rebuild Kit. ▫ Not shown in illustration.

REPLACEMENT PARTS LIST FOR: "F4291" & "G4291".

MODELS: F4291-A F4291-B						G4291-A	G4291-B			
REF. NO.	DESCRIPTION	QTY	NOTES	3/96 thru 7/01	8/01 thru Current	3/96 thru 7/01	8/01 thru Current			
1	+Handle	1		217069	217069					
2	Cover & Cordage 16/4	1	5	011072	011072	217069	217069			
3	Cover-Mach & Handle Asm	1	5	011058	011058	011072	011072			
4	+Gasket,Case/Cover	1		001011	001011	011058	011058			
5	+Wire Pkg (2) Wires	N/A		N/A	N/A					
6	Capacitor & Clamp Asm 35uF	N/A		N/A	N/A					
7	Housing,Mtr-& Stator	1	1	005136	005136	001011	001011			
8	Bearing,Sleeve-Bronze	1		001012	001012	N/A	N/A			
9	Cordage,Terminal & Seal 50' 16/4	1	5	011070	011070	004578	004578			
10	Sensor Cordage Term. & Seal 50'	N/A		N/A	N/A	001012	001012			
11	+Seal,Cord-Asm & Strain Relief	1	5	011071	011071	011070	011070			
12	+Plug,Test White	3		034090	034090	N/A	N/A			
13	+Seal,Thru Wall Term.	3		003402	003402	011071	011071			
14	Rotor & Brg. Asm.	1		011081	011081	034090	034090			
15	Washer,Seal Locating& Snap Ring	1		011057	011057	003402	003402			
16	+Bearing,7303	1		009861	009861	011081	011081			
17	+Seal,Mtr. Hsg.	2		001014	001014	011057	011057			
18	+Oil,Dielectric-(57 oz can)	1		011066	011066	009861	009861			
19	Adapter-Mach. Upper	1		008862	008862	001014	001014			
20	+Seal,Shaft - Upper	1	6	002430	014675	011066	011066			
	+Seal,Shaft - Lower	1	7	002430	014642	008862	008862			
21	Adapter-Mach Lower	1		008833	008833	002430	002430			
22	Impeller "4291"	1		011082	011082	014642	014642			
23	Flange Pkg 2"NPT	1		217024	217024	008833	008833			
	Flange Pkg 3"NPT	1		317024	317024	011082	011082			
24	Housing,Pump-Mach "4290/4291"	1		009349	009349	217024	217024			
25	+Screw,#6-32 x .25RHM SL Tc Stlgr	3		001877	001877	009349	009349			
26	+Screw,.25-20 x .75 HHm-SS	4		001916	001916	001877	001877			
27	+Screw,.25-20 x 1 HHm-SS	4		007790	007790	001916	001916			
28	+Screw,.5-13 x 2 HH Cap-SS	2		001909	001909	007790	007790			
29	+Washer,SS-1.25Od x .562ld x .078	2		002115	002115	001909	001909			
30	+Screw,.313-18 x 1 HH Cap-SS	8		002608	002608	002115	002115			
31	Wire,Asm-Mst Sensor	N/A		N/A	N/A	002608	002608			
32	+Seal,Sensor Cd Asm. & Strain Relief	N/A		N/A	N/A	N/A	N/A			
	Rebuild Kit	1		011093	011093	011093	011093			

- Items included in Rebuild Kit.
- ▣ Not shown in illustration.

REPLACEMENT PARTS LIST FOR: "BA4291".

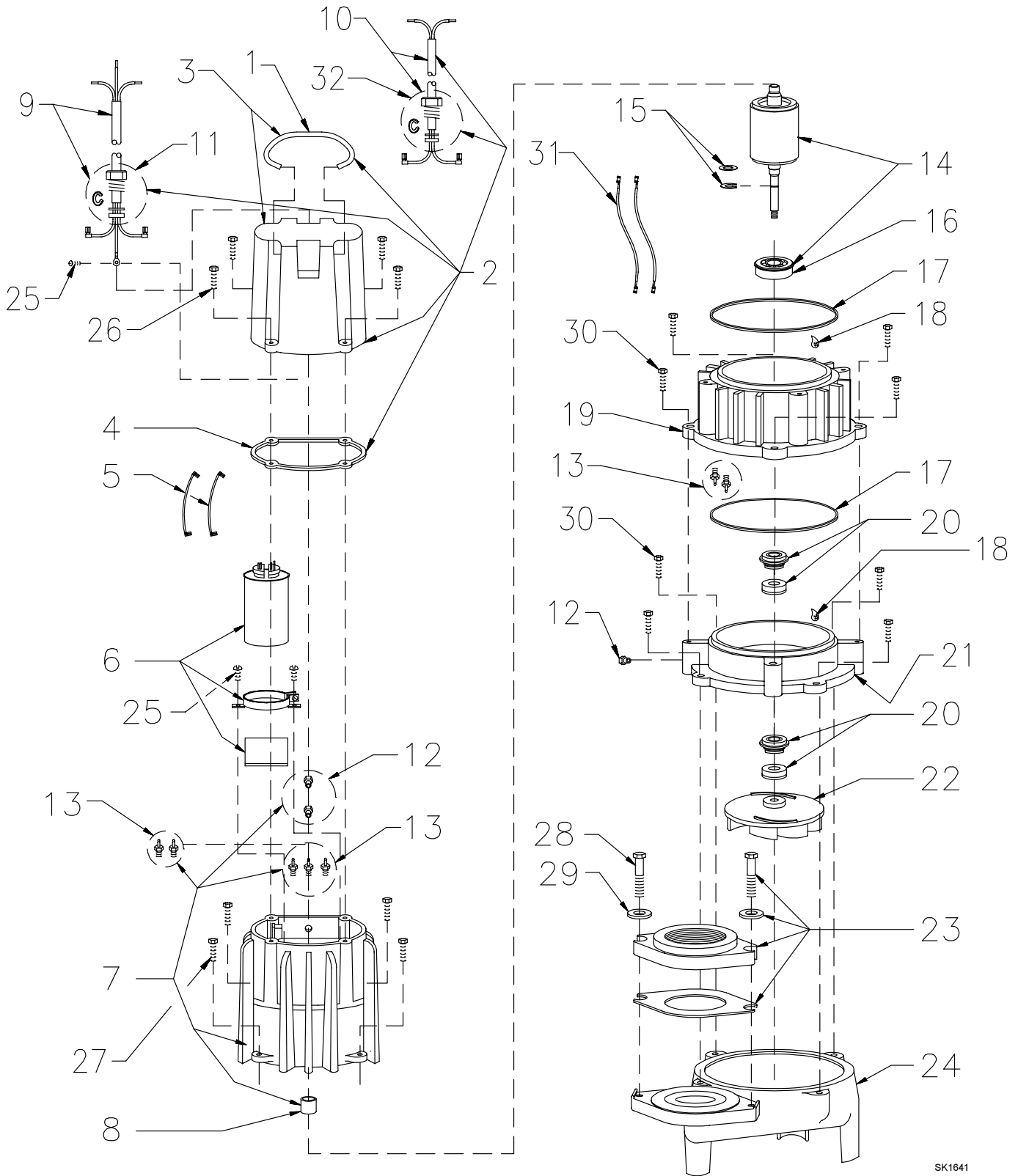
MODELS: BA4291-A BA4291-B					
REF. NO.	DESCRIPTION	QTY	NOTES	3/96 thru 7/01	8/01 thru Current
1	+Handle	1		217069	217069
2	Cover & Cordage 16/4	1	5	011072	011072
3	Cover-Mach & Handle Asm	1	5	011058	011058
4	+Gasket,Case/Cover	N/A		001011	001011
5	+Wire Pkg (2) Wires	N/A		N/A	N/A
6	Capacitor & Clamp Asm 35uF	1		N/A	N/A
7	Housing,Mtr-& Stator 575v/3Ph	1	1	006288	006288
8	Bearing,Sleeve-Bronze	1		001012	001012
9	Cordage,Terminal & Seal 50' 16/4	1	5	011070	011070
10	Sensor Cordage Term. & Seal 50'	N/A		N/A	N/A
11	+Seal,Cord-Asm & Strain Relief	1	5	011071	011071
12	+Plug,Test White	3		034090	034090
13	+Seal,Thru Wall Term.	3		003402	003402
14	Rotor & Brg. Asm.	1		011081	011081
15	Washer,Seal Locating& Snap Ring	1		011057	011057
16	+Bearing,7303	1		009861	009861
17	+Seal,Mtr. Hsg.	2		001014	001014
18	+Oil,Dielectric-(57 oz can)	1		011066	011066
19	Adapter-Mach. Upper	1		008862	008862
20	+Seal,Shaft - Upper	1	6	002430	014675
	+Seal,Shaft - Lower	1	7	002430	014642
21	Adapter-Mach Lower	1		008833	008833
22	Impeller "4291"	1		011082	011082
23	Flange Pkg 2"NPT	1		217024	217024
	Flange Pkg 3"NPT	1		317024	317024
24	Housing,Pump-Mach "4290/4291"	1		009349	009349
25	+Screw,#6-32 x .25RHM SL Tc Stlgr	3		001877	001877
26	+Screw,.25-20 x .75 HHm-SS	4		001916	001916
27	+Screw,.25-20 x 1 HHm-SS	4		007790	007790
28	+Screw,.5-13 x 2 HH Cap-SS	2		001909	001909
29	+Washer,SS-1.25Od x .562ld x .078	2		002115	002115
30	+Screw,.313-18 x 1 HH Cap-SS	8		002608	002608
31	Wire,Asm-Mst Sensor	N/A		N/A	N/A
32	+Seal,Sensor Cd Asm. & Strain Relief	N/A		N/A	N/A
	Rebuild Kit	1		011093	011093

- Items included in Rebuild Kit.
- ▣ Not shown in illustration.

NOTES FOR ALL 4291 MODELS:

- 1) Motor housing, bearing, stator & term. (Item 7) is preassembled at the factory and must be replaced as a unit. Stator is permanently attached to the motor housing. Plug (Item 12); seal thru wall term. (Item 13) and bearing-upper (Item 8) are replaceable.
- 2) "NA" indicates not applicable.
- 3) When ordering specify either General Electric or Emerson Motor.
- 4) See FM0160 parts price sheet for listing of parts prices.
- 5) Consult factory for pumps coded prior to 5/96.
- 6) Shaft seal in Rev. A pumps may be replaced with Carbon - Silicon Carbide seal. Order part number from Rev. B column if customer desires this upgrade.
- 7) Shaft seal in Rev. A pumps may be replaced with Silicon Carbide - Silicon Carbide seal. Order part number from Rev. B column if customer desires this upgrade.

REPLACEMENT PARTS ILLUSTRATION FOR ALL 4291 MODELS.



SK1641



<http://www.zoeller.com>

ZOELLER
PUMP CO.

MAIL TO: P.O. BOX 16347
Louisville, KY 40256-0347
SHIP TO: 3649 Cane Run Road
Louisville, KY 40211-1961
(502) 778-2731 • 1 (800) 928-PUMP
FAX (502) 774-3624

Manufacturers of . . .

"QUALITY PUMPS SINCE 1939"