

# INDEX

Specialty Gauge Introduction	3
Process Gauges - Series NF4UGY and LF4UGY	4
Series NF4UGY5 & LF4UGY5 and Dimensions	5
Standard Ranges - Process Gauges	6
Ultra Pressure Gauges - Series UG-1 and UG-2	7
Pressure Gauges - Series PG-1-Optional Gauge Features	8
Case Dimensions	9
Special Application Gauges - Series DG, TP, BG	10
Special Application Gauges - Series AG, RG, MG	11
Standard Ranges	12
Diaphragm Seals - Series DS/DV/DT and SW	13
Diaphragm Seals - Series MD and MN	14
Gauge Accessories	11

## TO SPECIFY Ordering Information, pages 7-8 & 10-11

### 1) Catalog Number

Dial Size	+	Series	+	Case Style	+	Internal Material
3 - 3 1/2"		AG-Altitude		B-Aluminum,Back Flange		1 - Bronze
4 - 4 1/2"		BG-Bellows		N-Aluminum w/o Flange		2 - 316 S.S.
6 - 6"		DG-Differential		E-Phenolic Turret		5 - Monel
8 - 8 1/2"		MG-Ammonia		F-Aluminum,Front Flange		
		PG-Pressure				
		UG-Ultra				
		RG-Refrigeration				
		TP-Duplex				

2) Dial Range - See page 12 for available Ranges

3) NPT Size - 1/4" or 1/2"

4) Location of Connection - Lower Mount (LM) or Lower Back Mount (LBM)

**Ex: 6UGB-2 0-100psi 1/4"LM**

# SPECIALTY GAUGE INTRODUCTION

This Specialty Gauge Catalog illustrates and describes the various pressure gauges available from Weiss Instruments in Solid Front (Safety), Solid Back Liquid-Filled or Dry configuration. These gauges ideally suit the requirements of the Process, Industrial, Power and Chemical Industries and are available with Phosphor Bronze/Brass, 316 Stainless Steel or Monel internals.

Gauge accessories such as: Siphons, Snubbers, Gauge Cocks, Needle Valves, Ball Valves and Diaphragm Seals (to prevent corrosion or clogging of Gauges) are also illustrated.

## OPERATING CONDITIONS

Conditions which a pressure gauge will be subjected to are a major factor in choosing the correct indicator for each application. The following points are offered as a guide for the proper selection.

- Where vibration and pulsation exist, the liquid-filled type may be better suited.
- Gauge range should be twice that of the operating range. Additional information can be obtained by reading Pressure Gauge Standard ANSI/ASME B40.1.
- Liquid filled ambient temperature limits – Glycerine 0-150°F / Silicone 50-0-150°F
- Non-filled gauges can withstand continuous service temperatures as high as 300°F, however, excess operating temperatures should be avoided whenever possible since mid-scale accuracy will be affected by approximately 1% per 100°F ambient temperature change.
- Non-filled gauges with stainless steel components and welded joints will withstand higher temperatures for short periods of time, although other internals may be damaged and calibration permanently affected.
- For highly corrosive and/or viscous process media a diaphragm seal may be appropriate to isolate the gauge. Refer to pages 13 & 14.

**WARNING:** To prevent misapplication, media and ambient operating conditions should be considered when selecting pressure gauges. Improper gauge application can be detrimental, causing failure and possible property damage or personal injury. Additional information can be obtained by reading Pressure Gauge Standard ANSI/ASME B-40.1, available from the American Society of Mechanical Engineers, United Engineering Center, 345 East 47th St., New York, NY 10017.

# Process Pressure Gauges

## NF4UGY1: NON-FILLED LF4UGY1: LIQUID FILLED

**SOCKET** - Brass

**BOURDON TUBE** - Phosphor Bronze C Tube to 1000 psi

**CONNECTING JOINTS** - Silver Brazed

**MOVEMENT** - Bushed Stainless Steel Rotary

**DIAL** - White Aluminum, Black Markings

**POINTER** - Black Aluminum, Micrometer Adjustable

**CASE** - Black Impact Resistant Phenolic, Solid Front Construction - Blow out Back - Safety Design

**RING** - Reinforced Polypropylene

**WINDOW** - Acrylic

**GASKETS** - Buna N

**ACCURACY** - 0.5% ASME B40.1 Grade 2A

**CONNECTIONS** - 1/4" NPT Lower

1/2" NPT Lower available



## NF4UGY2: NON-FILLED LF4UGY2: LIQUID FILLED

**SOCKET** - AISI 316 Stainless Steel

**BOURDON TUBE** - AISI 316 S.S. C Tube to 1000 psi  
Coiled Tube 1500 psi to 30,000 psi

**CONNECTING JOINTS** - Welded

**MOVEMENT** - Bushed Stainless Steel Rotary

**DIAL** - White Aluminum, Black Markings

**POINTER** - Black Aluminum, Micrometer Adjustable

**CASE** - Black Impact Resistant Phenolic, Solid Front Construction - Blow out Back - Safety Design

**RING** - Reinforced Polypropylene

**WINDOW** - Acrylic

**GASKETS** - Buna N

**ACCURACY** - 0.5% ASME B40.1 Grade 2A

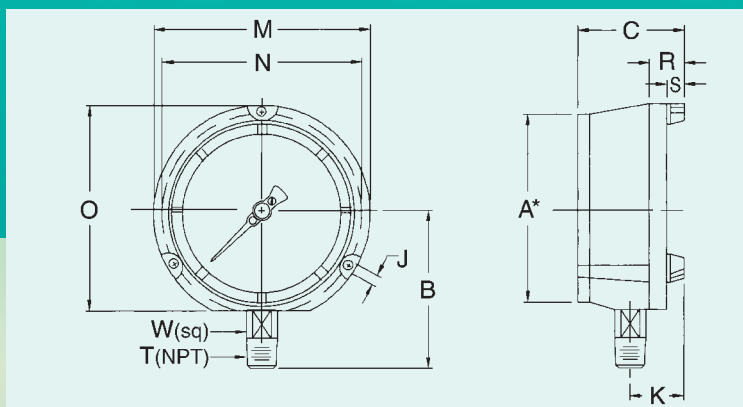
**CONNECTIONS** - 1/4" NPT Lower or Lower Back

1/2" NPT available



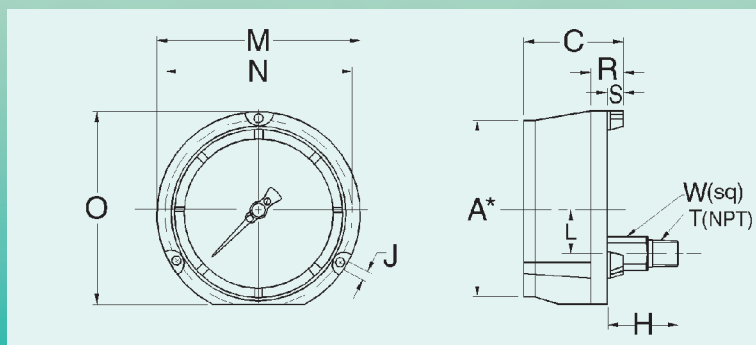
# NF4UGY5: NON-FILLED LF4UGY5: LIQUID FILLED

**SOCKET** - Monel 405  
**BOURDON TUBE** - Monel 400 C Tube to 1000 psi  
 Coiled Tube 1500 psi to 5000 psi  
**CONNECTING JOINTS** - Welded  
**MOVEMENT** - Bushed Stainless Steel Rotary  
**DIAL** - White Aluminum, Black Markings  
**POINTER** - Black Aluminum, Micrometer Adjustable  
**CASE** - Black Impact Resistant Phenolic, Solid Front  
 Construction - Blow out Back - Safety Design  
**RING** - Reinforced Polypropylene  
**WINDOW** - Acrylic  
**GASKETS** - Buna N  
**ACCURACY** - 0.5% ASME B40.1 Grade 2A  
**CONNECTIONS** - 1/4" NPT or 1/2" NPT Lower



	A*	B	C	J	K	M	N	O	R	S	T <sub>NPT</sub>	W <sub>sq</sub>
mm	114	103 <sup>1</sup>	82	6.0	38	148	136.5	141	25	12.5	—	22
in	4.5	4.06 <sup>1</sup>	3.23	0.24	1.50	5.83	5.37	5.55	0.98	0.49	1/2"	0.87

A\* - Nominal Size. 1- Gauges with 1/4" NPT connection – dimension changes to 97mm (3.81 in.).



	A*	C	H	J	L	M	N	O	R	S	T <sub>NPT</sub>	W <sub>sq</sub>
mm	114	82	48.5 <sup>1</sup>	6.0	28.5	148	136.5	141	25	12.5	—	22
in	4.5	3.23	1.9 <sup>1</sup>	0.24	1.12	5.83	5.37	5.55	0.98	0.49	1/2"	0.87

A\* - Nominal Size. 1- Gauges with 1/4" NPT connection – dimension changes to 43.5mm (1.71 in.).

# STANDARD RANGES

## Process Pressure Gauges

### PRESSURE – DUAL SCALES

OUTER (KPa)			INNER (PSI)		
Range	Graduations		Range	Graduations	
	minor graduation	figure interval		minor graduation	figure interval
0-100	1	10	0-15	0.1	2
0-200	2	20	0-30	0.2	5
0-400	5	50	0-60	0.5	5
0-600	5	100	0-100	1	10
0-1000	10	100	0-160	1	20
0-1200	10	200	0-200	2	20
0-2000	20	200	0-300	2	50
0-2500	20	500	0-400	5	50
0-4000	50	500	0-600	5	50
0-6000	50	1000	0-1000	10	100
0-10000	100	1000	0-1500	10	200
0-12000	100	2000	0-2000	20	200
0-20000	200	2000	0-3000	20	500
0-25000	200	5000	0-4000	50	500
0-30000	200	5000	0-5000	50	500
0-40000	500	5000	0-6000	50	500
0-60000	500	10000	0-10000	100	1000
0-100000	1000	10000	0-15000	100	2000
0-120000	1000	20000	0-20000	200	2000

### VACUUM – DUAL SCALES

OUTER (KPa)			INNER (inHg)		
Range	Graduations		Range	Graduations	
	minor graduation	figure interval		minor graduation	figure interval
-100-0	1	10	30-0	0.2	5

### COMPOUND – DUAL SCALES

OUTER (KPa)					INNER (inHg/PSI)				
Range	Graduations				Range	Graduations			
	minor graduation	figure interval	minor graduation	figure interval		minor graduation	figure interval	minor graduation	figure interval
-100-0-100	2	20	2	20	30-0-15	0.5	10	0.2	5
-100-0-200	2	50	2	50	30-0-30	1	10	0.5	5
-100-0-400	5	50	5	50	30-0-60	1	10	0.5	10
-100-0-600	5	100	5	100	30-0-100	2	30	1	20
-100-0-1000	10	100	10	200	30-0-150	2	30	1	20
-100-0-1200	20	100	20	200	30-0-200	5	30	2	20



# ULTRA PRESSURE GAUGES

## Solid Back Construction

### SERIES UG-1

**SOCKET** - Brass

**BOURDON TUBE** - Phosphor Bronze C Tube to 1000 psi

**CONNECTING JOINTS** - Silver Brazed

**MOVEMENT** - Bushed Stainless Steel Rotary

**DIAL** - White Aluminum, Black Markings

**POINTER** - Black Aluminum, Micrometer Adjustable

**WINDOW** - Glass

**ACCURACY** - 0.5% ASME B40.1 Grade 2A

**CONNECTIONS** - 1/4" or 1/2" NPT, Lower or Lower Back

#### Available Dial Sizes

4 1/2" Bottom Conn.

4 1/2" Lower Back Conn.

6" Bottom Conn.

6" Lower Back Conn.

8 1/2" Bottom or Lower Back

#### Case Styles

B, E, N

E, F

B

F

B



### SERIES UG-2

**SOCKET** - 316 Stainless Steel

**BOURDON TUBE** - 316 S.S. C Tube to 1000 psi  
Coiled Tube 1500 psi to 10,000 psi

**CONNECTING JOINTS** - Welded

**MOVEMENT** - Bushed Stainless Steel Rotary

**DIAL** - White Aluminum, Black Markings

**POINTER** - Black Aluminum, Micrometer Adjustable

**WINDOW** - Glass

**ACCURACY** - 0.5% ASME B40.1 Grade 2A

**CONNECTIONS** - 1/4" or 1/2" NPT, Lower or Lower Back

#### Available Dial Sizes

4 1/2" Bottom Conn.

6" Bottom Conn.

6" Lower Back Conn.

8 1/2" Bottom or Lower Back

#### Case Styles

B, E, N

B

F

B



# PRESSURE GAUGES

## Solid Back Construction

### SERIES PG-1

**SOCKET** - Brass

**BOURDON TUBE** - Phosphor Bronze C Tube to 1000 psi

**CONNECTING JOINTS** - Silver Brazed

**MOVEMENT** - Bushed Brass Rotary

**DIAL** - White Aluminum, Black Markings

**POINTER** - Black Aluminum, Slotted Adjustable

**WINDOW** - Glass

**ACCURACY** - 1.0% ASME B40.1 Grade 1A

**CONNECTIONS** - 1/4" or 1/2" NPT, Lower or Lower Back



#### Available Dial Sizes

3 1/2" Bottom Conn.

4 1/2" Bottom Conn.

4 1/2" Lower Back Conn.

6" Bottom Conn.

6" Lower Back Conn.

8 1/2" Bottom or Lower Back

#### Case Styles

B

B, E, N

E, F

B

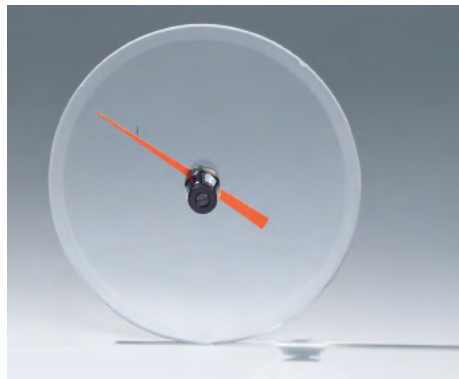
F

B, E

## Optional Gauge Features



Flush Mounting Ring



Lazy Hand Assembly



Red Set Hand



Plastic Lens



Safety Glass Lens

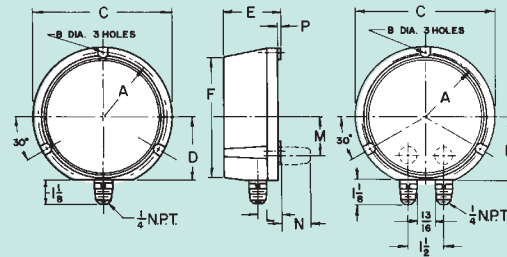


Bladder for Liquid Fill Kit

# CASE DIMENSIONS

## STYLE E - For Wall, Panel or Direct Mounting

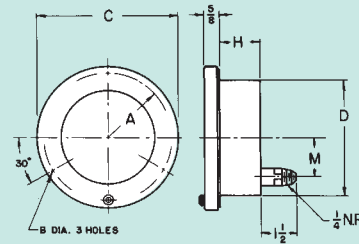
DIAL SIZE	A	B	C	D	E	F	L	M	N	P
4½"	2.69	.22	5.81	2.62	2.37	5.06	.91	1.62	1.62	.062
8½"	4.81	.28	10.25	4.69	2.47	8.97	1.06	2.12	1.62	.062



## STYLE F - Black Aluminum with Hinged Ring Front Flange

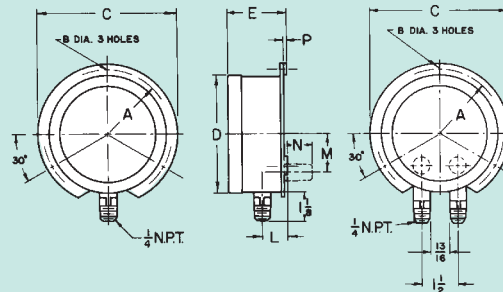
DIAL SIZE	A	B	C	D	H	M	X
4½"	2.69	.22	6	4.81	2.03	1.62	4.87
6"	3.50	.22	7.62	6.34	1.66	1.62	6.47

X - Panel Hole cut-out diameter.



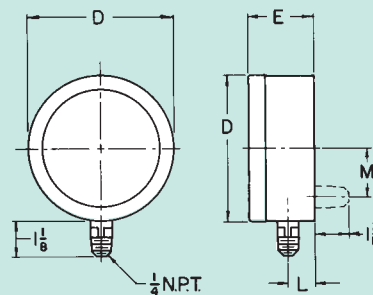
## STYLE B - Black Aluminum Case & Twist Ring Back Flange

DIAL SIZE	A	B	C	D	E	L	M	N	P
3½"	2.12	.22x.39	5	4.14	2	.81	1.06	1.62	.062
4½"	2.68	.22x.29	5.87	4.97	2.44	1	1.62	1.62	.156
6"	3.5	.28x.36	7.62	6.47	2.58	1.03	1.62	1.62	.156
8½"	4.81	.28	10.25	8.94	2.94	.97	2.12	1.62	.062



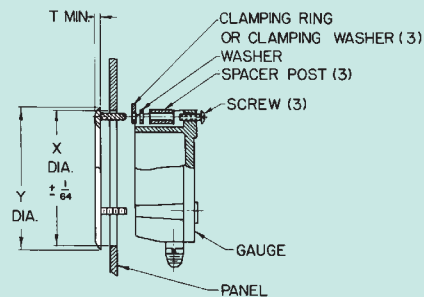
## STYLE N - Black Aluminum Case & Twist Ring No Flange

DIAL SIZE	D	E	L	M
4½"	4.97	2.40	.84	1.62



## Flush Mounting Ring for Phenol Style E Case

DIAL SIZE	X		Y		SCREW SIZE		REQ	T
	Std.	Safety	Std.	Safety	Std.	Safety		
4½"	5.59	5.66	6	6	10-24x.87	10-24x1.25	3	.14





# SPECIAL APPLICATION GAUGES



Shown with B Case

## DIFFERENTIAL GAUGES-SERIES DG-1\*

Measures the difference between two independent pressure sources.

### FEATURES:

Brass Sockets-Phosphor Bronze Tubes.

1.0% Accuracy ASME B40.1 Grade 1A

White Aluminum Dial with Black Markings

Slotted Adjustable Pointer

Available Dial Sizes

Case Styles

4 1/2" Bottom Conn.

B

6" Bottom Conn.

B

\* See pertinent data in available Range Table on page 12.



Shown with B Case

## DUPLEX GAUGES - SERIES TP-1

Measures two related pressures on the same dial. Top pointer is orange and the bottom pointer is black.

### FEATURES:

Brass Sockets-Phosphor Bronze Tubes.

1.0% Accuracy ASME B40.1 Grade 1A

White Aluminum Dial with Black Markings

Pointer-Black Aluminum, Micrometer Adjustable

Available Dial Sizes

Case Styles

4 1/2" Bottom Conn.

B



Shown with B Case and 316 S.S. bellows & socket.

## BELLOWS GAUGES-SERIES BG-1\*\*

Sensitive bellows element for accurate measurement of pressures below 15 psi.

### FEATURES:

Brass Socket-Phosphor Bronze Bellows.

1.0% Accuracy ASME B40.1 Grade 1A

White Aluminum Dial with Black Markings

Slotted Adjustable Pointer

Available Dial Sizes

Case Styles

4 1/2" Bottom Conn.

B

4 1/2" Lower Back Conn.

F

\*\* Also available with 316 S.S. bellows and socket, Series BG-2.



Shown with E Case

## ALTITUDE GAUGES - SERIES AG-1

Reads in both altitude and psi to indicate height of water in tanks (red set pointer provided).

### FEATURES:

Brass Socket-Phosphor Bronze Tube.

1.0% Accuracy ASME B40.1 Grade 1A

White Aluminum Dial with Black Markings

Slotted Adjustable Pointer

#### Available Dial Sizes

3 1/2" Bottom Conn.

4 1/2" Bottom Conn.

6" Bottom Conn.

8 1/2" Bottom Conn.

#### Case Styles

B

B, E, N

B

B



Shown with N Case

## REFRIGERATION GAUGES - SERIES RG-1

Reads in both psi and corresponding refrigerant temperature. For R12, R22 and R502

### FEATURES:

Brass Socket-Phosphor Bronze Tube.

1.0% Accuracy ASME B40.1 Grade 1A

White Aluminum Dial with Black Markings

Slotted Adjustable Pointer

#### Available Dial Sizes

4 1/2" Bottom Conn.

#### Case Styles

B, E, N



Shown with B Case

## AMMONIA GAUGES - SERIES MG-2

Reads in both psi and corresponding ammonia temperature.

### FEATURES:

Stainless Steel Socket and Tube.

1.0% Accuracy ASME B40.1 Grade 1A

White Aluminum Dial with Black Markings

Slotted Adjustable Pointer

#### Available Dial Sizes

4 1/2" Bottom Conn.

#### Case Styles

B, E, N

# STANDARD RANGES

## SERIES UG-1 UG-2 PG-1 TP-1

PRESSURE		
PSI	GRADUATIONS	FIGURE INTERVAL
0-15	0.2	1
0-30	0.5	5
0-60	1	10
0-100	1	10
0-160	2	20
0-200	2	20
0-300	5	50
0-400	5	50
0-600	10	100
0-1,000	10	100
0-1,500	20	300
0-2,000	20	200
0-3,000	25	300
0-5,000	50	500
0-10,000	100	1,000
0-20,000	200	2,000
COMPOUND—In. Hg. Vac.-PSI		
30"-0- 15	1" & 0.5	5" & 3
30"-0- 30	1" & 1	10" & 5
30"-0- 60	1" & 1	10" & 10
30"-0-100	5" & 1	15" & 10
30"-0-150	5" & 5	30" & 25
30"-0-200	5" & 5	30" & 20
30"-0-300	5" & 5	30" & 50
30"-0-400	5" & 5	30" & 50
30"-0-600	5" & 10	30" & 100
VACUUM—In. Hg. Vac.		
0-30"	0.5"	5"

## SERIES BG-1 BG-2

PRESSURE			
INCH/WATER	GRADS	FIG. INTV.	DIAL ARC
0- 10"*	0.2"	2"	90°
0- 15"	0.5"	5"	90°
0- 20"	1"	2"	180°
0- 30"	1"	5"	215°
0- 40"	1"	5"	270°
0- 60"	1"	5"	270°
0- 80"	1"	10"	270°
0-100"	1"	10"	270°
0- 5 psi	1 oz.	1	270°
0- 10 psi	2 oz.	1	270°
COMPOUND			
10" Water Pres. 10" Water Vac.	0.5"	2"	180°
40" Water Pres. 20" Water Vac.	1"	10"	270°
5 lbs. PSI & 10" Water Vac.	.2 & .1	2" & 1	270°
VACUUM			
0-5" Hg. Vac.	1"	1"	270°
0-10" Hg. Vac.	0.2"	2"	180°
0-40" Water-Vac.	1"	5"	270°

\*Not available in BG-2

## SERIES RG-1

REFRIGERATION		
INCH/PSI	GRADUATIONS	FIGURE INTV.
30"-0-150	5" & 5	30" & 25
30"-0-300	5" & 5	30" & 25
0-300	5	25
0-500	10	50

## SERIES MG-2

AMMONIA		
INCH/PSI	GRADUATIONS	FIGURE INTV.
30"-0-150	5" & 5	30" & 25
30"-0-300	5" & 5	30" & 25

## SERIES AG-1

ALTITUDE		
FEET	GRADUATIONS	FIGURE INTV.
0- 30	0.5	5
0- 70	1	10
0- 100	1	10
0- 160	2	20
0- 200	2	20
0- 300	5	50
COMBINATION		
PSI/Ft.	GRADUATIONS	FIGURE INTV.
15 & 35'	0.2 & 0.5'	3 & 5'
30 & 70'	1 & 1'	5 & 10'
60 & 140'	1 & 2'	10 & 20'
100 & 231'	2 & 5'	10 & 25'
150 & 345'	5 & 5'	25 & 20'
200 & 460'	5 & 5'	20 & 50'
300 & 690'	5 & 10'	25 & 50'

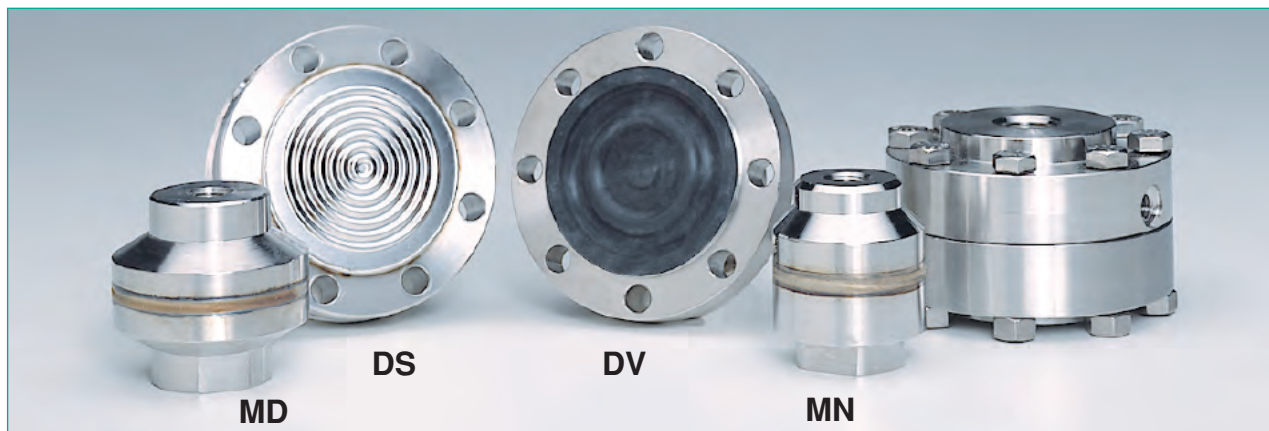
## SERIES DG-1

DIFFERENTIAL			
DGC RANGES	GRADS	FIG. INTV.	STATIC PRESSURE LIMITS
30-0- 30	1	5	45
50-0- 50	1	10	75
100-0-100	2	20	150
200-0-200	5	50	300
300-0-300	10	100	350
DGL RANGES	GRADS	FIG. INTV.	STATIC PRESSURE
0- 30	0.5	5	45
0- 60	1	10	90
0- 100	1	10	150
0- 160	2	20	240
0- 200	2	20	300
0- 300	5	50	450
0- 400	5	50	600
0- 600	10	100	600
0- 700	10	100	700
0- 800	10	100	800
0-1,000	10	100	1,000

\* Differential Pressure Gauges measure the difference between two separate pressure sources. Dial with "O" at the top center indicates the amount one pressure source is higher than the other. Dial with "O" at the left side indicates the Differential between high and low pressure.



# DIAPHRAGM SEALS



The Weiss line of Diaphragm Seals, in conjunction with Weiss pressure indicators, offers instrumentation that's rugged and carefully calibrated to withstand the most severe industrial, process or OEM service. Our diaphragm seals are available in a variety of metal housing materials and process connection sizes to fit most requirements.

## Series DS/DV/DT

**Max. Pressure/Temperature Limits:** Vacuum thru 2300 psi to 100°F, 1500psi to 200°F, 600 psi to 400°F.

**Top Housing:** 1/4" or 1/2" NPT (304 S.S. standard)

**Diaphragm:** 316 L S.S. welded, Viton\* or Teflon\*\*

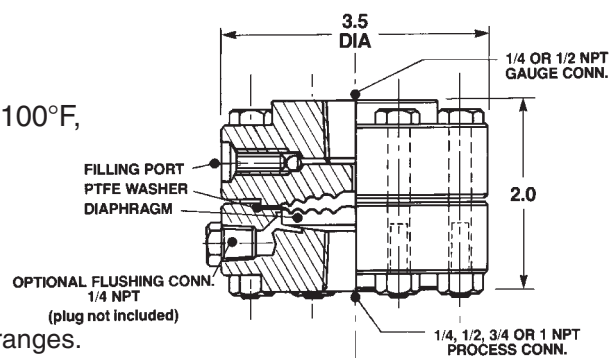
**Nuts and Bolts:** Stainless Steel

**Lower Housing:** 1/4" thru 1" NPT

\* Viton is furnished for Vacuum, 30 psi and Compound 30-0-15psi ranges.

\*\* Teflon is available for ranges to 200 psi.

**Ordering Code:**      -DS-      **DS=316 SS** **Ex: 25-DS12-50**  
                   A -DV B C D **DV=Viton**  
                   -DT **DT=Teflon**



### A. Top Connection

25 = 1/4" NPT  
50 = 1/2" NPT

### B. Flushing/No Flushing

0 = No flushing conn.  
1 = Flushing conn.

### C. Lower Housing Mat'l

2 = 316 SS  
3 = Steel  
4 = 304 SS

### D. Process Conn.

25 = 1/4" NPT  
50 = 1/2" NPT  
75 = 3/4" NPT  
10 = 1" NPT

For Saddle Weld 3" and larger process connections. Recommended for applications that require a continuous process flow across the diaphragm to insure pressure sensing is not inhibited by solids buildup. The diaphragm is welded to the upper housing to permit for inspection or cleaning of the diaphragm without the loss of fill fluid.

## Series SW

**Top Connection:** 1/4" or 1/2" NPT

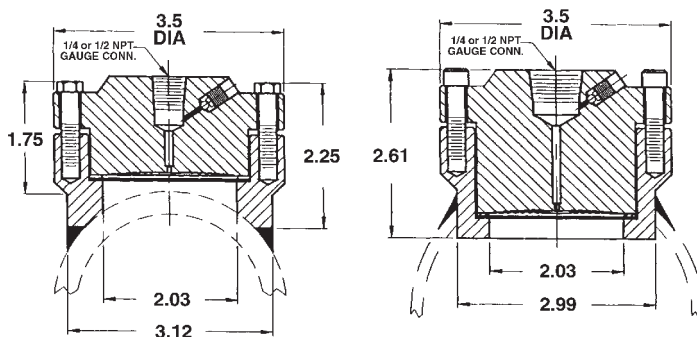
**Top Housing:** Carbon Steel (316S.S. optional)

**Lower Housing:** Carbon Steel (316S.S. optional)

**Diaphragm:** 316 L (All other metallic optional)

**Bolts:** Carbon Steel (300 Series optional)

**Ordering Code:**      -SW-       
                   A B C D  
**Ex: 25-3-SW- 3 4**



### A. Top Connection

25 = 1/4" NPT  
50 = 1/2" NPT

### B. Top Housing

2 = 316 S.S.  
3 = Carbon Steel (std)

### C. Lower Housing Mat'l

2 = 316 S.S.  
3 = CarbonSteel

### D. Process Conn.

3 = 3"  
4 = 4"

The Series MD/MN is a compact, lightweight, economical diaphragm seal. The upper and lower housing, as well as the diaphragm, are type 316 stainless steel - all welded together making a one piece integral unit, ideally suited for those applications where space is a factor.

The use of a hermetically sealed, liquid filled pressure gauge in conjunction with either a MD or MN seal protects the indicating gauge from both the process medium and atmospheric conditions, as well as reduces pointer fluctuations due to vibration and pulsation.

## Series MD

**Opr. Pressure:** 60 psi thru 1000 psi (minimum scale range 0-100 psi)

**Temperature Limits:** -5 to 300°F

**Top Connection:** 1/4" or 1/2" NPT

**Process Connection:** 1/4", 1/2" or 3/4" NPT

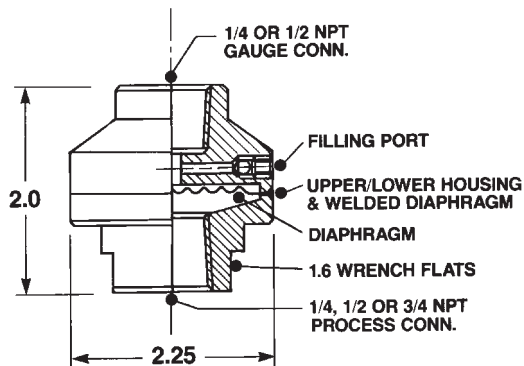
**Ordering Code:**     -MDN2-      
                   A                  B  
**Ex:** 25-MDN2-50

### A. Top Connection

25 = 1/4" NP  
 50 = 1/2" NPT

### B. Process Conn.

25 = 1/4" NPT  
 50 = 1/2" NPT  
 75 = 3/4" NPT



## Series MN

**Opr. Pressure:** 100 psi thru 1000 psi (minimum scale range 0-200 psi)

**Temperature Limits:** -5 to 300°F

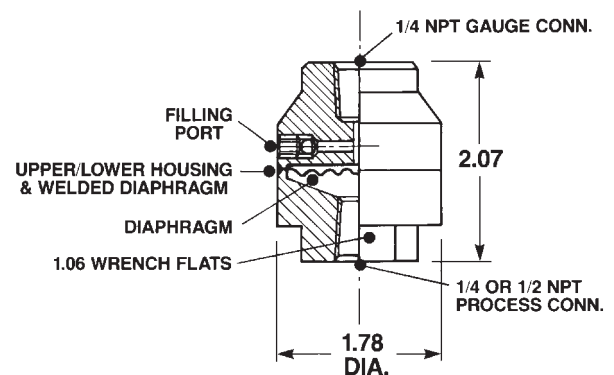
**Top Connection:** 1/4" NPT

**Process Connection:** 1/4" or 1/2" NPT

**Ordering Code:** 25-MNN2-      
   X  
**Ex:** 25-MNN2-25

### X. Process Connection

25 = 1/4" NPT  
 50 = 1/2" NPT



## REMOTE MOUNTING

Stainless Steel Plain Seamless or Armored Capillary with Stainless Steel Fittings can be provided for remote mounted applications. Fittings are available in 1/4" or 1/2" NPT.

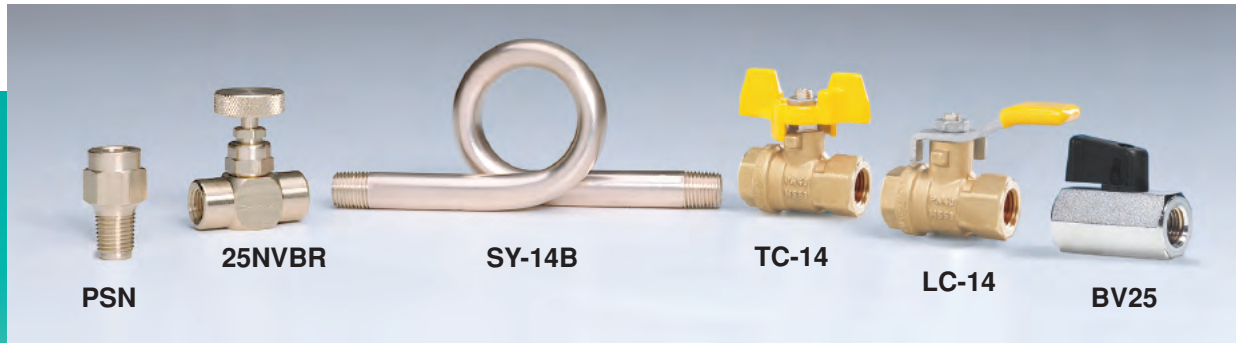
Series DS/DT/DV/SW		
AVAILABLE MATERIALS		
Material	Process Housing	Diaphragm
316 L	•	•
316 S.S.	•	
Carpenter 20	•	
Hastelloy B&C	•	•
Inconel	•	•
Monel	•	•
PVC	•	
Tantalum		•
Teflon	•	•
Viton		•

## LIQUID FILLINGS

Food-Grade Glycerine  
 Halocarbon (R)  
 Silicone DC200



# GAUGE ACCESSORIES



**TABLE 1 - PRESSURE SNUBBERS**

STYLE CODE	HOUSING MATERIAL CODE	HOUSING MATERIAL	NPT CODE	NPT	PSI RATING AT 70°F
PSN	B	Brass	25	1/4"	1,500 psi
	S	303 S.S.	50	1/2"	1,500 psi

**TABLE 2**

POROSITY SYMBOL CODE	TYPE OF SERVICE	PORE OPENING MEAN	PORE OPENING MAX.
E	Water and Light Oil (30 to 225 SSU*)	.0013	.0025
D	Oil (225 to 500 SSU)	.0025	.005
G	Air and other Gases	.0004	.0009

\* SSU - Saybolt Seconds Universal Viscosity

For complete Catalog No. use Coding from Table 1 & 2. **EX: PSN-B-25-E** = Brass Housing 1/4" NPT, E Porosity Disc.

## NEEDLE VALVES

CAT. NO.	SIZE	MATERIAL	RATING
25NVBR	1/4" FNPT X 1/4" FNPT	Brass	600 psi & 300°F
25NVSS	1/4" FNPT X 1/4" FNPT	304S.S.	4000 psi & 150°F
50NVBR	1/2" FNPT X 1/2" FNPT	Brass	600 psi & 300°F
50NVSS	1/2" FNPT X 1/2" FNPT	304S.S.	4000 psi & 150°F

## SYPHONS

CAT. NO.	SIZE	MATERIAL	RATING
SY-14S	1/4" MNPT x 1/4" MNPT	Iron	500 psi & 400°F
SY-14B	1/4" MNPT x 1/4" MNPT	Brass	250 psi & 400°F
SY-14SS304	1/4" MNPT x 1/4" MNPT	304SS	500 psi & 850°F
SY-14SS316	1/4" MNPT x 1/4" MNPT	316SS	500 psi & 850°F
SY-12S	1/2" MNPT x 1/2" MNPT	Iron	500 psi & 400°F
SY-12B	1/2" MNPT x 1/2" MNPT	Brass	250 psi & 400°F
SY-12SS304	1/2" MNPT x 1/2" MNPT	304SS	500 psi & 850°F
SY-12SS316	1/2" MNPT x 1/2" MNPT	316SS	500 psi & 850°F

NOTE: Angle Syphon available 1/4" MNPT x 1/4" MNPT Iron - **Model ASY-14S**

## GAUGE COCKS

CAT. NO.	SIZE	MATERIAL	RATING
TC-14	1/4" FNPT x 1/4" FNPT	Brass	150 lb. Steam
MTC-14	1/4" FNPT x 1/4" MNPT	Brass	150 lb. Steam
LC-14	1/4" FNPT x 1/4" FNPT	Brass	150 lb. Steam
TC-12	1/2" FNPT x 1/2" FNPT	Brass	150 lb. Steam

## BALL VALVES

CAT. NO.	SIZE	MATERIAL	RATING
BV25	1/4" FNPT x 1/4" FNPT	Nickel Plated Brass	450 psi & 250°F
MBV25	1/4" FNPT x 1/4" MNPT	Nickel Plated Brass	450 psi & 250°F
BV50	1/2" FNPT x 1/2" FNPT	Nickel Plated Brass	450 psi & 250°F