

FEATURES OF 3/4" (19.05mm) AND 1" (25.4mm) MOUNTS:

Made of Nylon for high impact and tensile strength.

Nylon operating temperatures from -40°F to 185°F (-40°C to 85°C).

Four-way tie insertion speeds assembly. Cable ties slide easily into mounts from any of the four sides.

Adhesive-backed mounts conform to minor surface irregularities.

Adhesive mounts available in rubber and acrylic. Rubber has a quicker set and moderate strength. Acrylic has a longer set and a higher strength. Refer to the selection guide to choose the best mount for your application.

Load carrying capability for 1" (25mm) adhesive-backed mounts is 0.5 lbs. (.23 kg); 3/4" (19mm) mounts is 0.25 lb. (.11 kg).

Stocked in natural color. Other colors available on request.

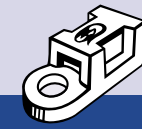
Adhesive mounts are packaged 2 per strip making it **easy and fast to mount and tie** your assembly.



MOUNT APPLICATION	ADHESIVE SELECTION	
	RUBBER	ACRYLIC
PAPER/CARDBOARD	X	
STEEL/ALUMINUM	X	X
GLASS/CERAMICS		X
RUBBER	X	
PAINTED SURFACES	X	X
CLOTH	X	
RIGID VINYL	X	X
PLASTICIZED VINYL		X
POLYPROPYLENE/POLYETHYLENE	X	
ABS ACRYLICS	X	
POLYSTYRENE	X	X
URETHANE	X	

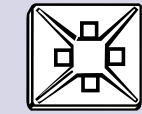
PAINTED SURFACES	SURFACE SELECTION	
	RUBBER	ACRYLIC
POLENE	X	
URETHANE	X	
SILICONE	X	
LATEX	X	
ENAMEL		X
ACRYLIC		X

	RELATIVE SOLVENT RESISTANCE	TEMP. PERFORMANCE			RELATIVE SHEAR STRENGTH	PEEL STRENGTH	
		LOW	HIGH	INTERMIT.		INITIAL	ULTIMATE
		CONTIN.					
RUBBER	MEDIUM	-20°F/28.9°C	150°F/65.6°C	200°F/93.3°C	HIGH	HIGH	HIGH
ACRYLIC	HIGH	-20°F/28.9°C	180°F/82.2°C	375°F/190.6°C	VERY HIGH	MEDIUM	HIGH



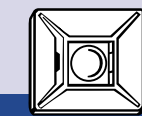
Length: .750"/19.05mm
Width: .380"/9.65mm
Thickness: .210"/5.33mm

TIE ANCHOR BASE			
PART #	MATERIAL/STYLE	PKG QTY	CASE QTY
10027	TIE ANCHOR BASE #8 SCREW	100/BAG	1M
10028	TIE ANCHOR BASE #10 SCREW	100/BAG	1M



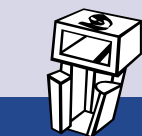
Length: (3/4"/19.05mm mount) .835"/21.21mm
Width: .835"/21.21mm
Thickness: .190"/4.83mm; (1"/25.4mm mount) 1.090"/27.69mm x 1.090"/27.69mm x .275"/6.99mm

ADHESIVE MOUNT			
PART #	MATERIAL/STYLE	PKG QTY	CASE QTY
08461	3/4"/19.05mm ACRYLIC ADHESIVE MOUNT FOR MINIATURE TIES & INTERMEDIATE TIES	100/BAG	1M
10029	3/4"/19.05mm RUBBER BASED ADHESIVE MOUNT FOR MINIATURE TIES AND INTERMEDIATE TIES	100/BAG	1M
08462	1"/25.4mm ACRYLIC ADHESIVE MOUNT FOR INTERMEDIATE AND STANDARD TIES	100/BAG	1M
10030	1"/25.4mm RUBBER BASED ADHESIVE MOUNT FOR INTERMEDIATE AND STANDARD TIES	100/BAG	1M



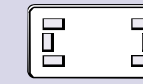
Length: 1.080"/27.43mm
Width: 1.080"/27.43mm
Thickness: .260"/6.60mm

SCREW MOUNT			
PART #	MATERIAL/STYLE	PKG QTY	CASE QTY
08463	1"/25.4mm PLAIN BACKED SCREW MOUNT FOR INTERMEDIATE AND STANDARD TIES	100/BAG	1M



Length: .620"/15.75mm
Width: .430"/10.92mm
Thickness: .295"/7.49mm

PUSH-IN MOUNT			
PART #	MATERIAL/STYLE	PKG QTY	CASE QTY
10056	PUSH-IN MOUNT 1/4"/6.35mm HOLE	100/BAG	1M



Length: 1.500"/38.1mm
Width: .755"/19.18mm
Thickness: .030"/.76mm

IDENTIFICATION PLATE			
PART #	MATERIAL/STYLE	PKG QTY	CASE QTY
08457	IDENTIFICATION PLATE 1-1/2"-3/4"/38.1mm-19.05mm	100/BAG	1M



Length: 1.060"/26.92mm
Width: 1.060"/26.92mm
Thickness: .060"/1.52mm

ADHESIVE FLAT CABLE CLIP			
PART #	MATERIAL/STYLE	PKG QTY	CASE QTY
08406	ADHESIVE FLAT CABLE CLIP	100/BAG	1M



CRADLE MOUNT	
SMALL #4 SCREW	Length: .540"/13.72mm, width: .340"/8.64mm, thickness: .230"/5.84mm
MEDIUM #8 SCREW	Length: .720"/18.29mm, width: .520"/13.21mm, thickness: .330"/8.38mm
LARGE #10 SCREW	Length: 1.040"/26.42mm, width: .640"/16.26mm, thickness: .420"/10.67mm
1/4"/6.35mm SCREW	Length: 1.040"/26.42mm, width: .640"/16.26mm, thickness: .420"/10.67mm

PART #	MATERIAL/STYLE	PKG QTY	CASE QTY
10044	CRADLE MOUNT SMALL #4 SCREW	100/BAG	1M
10045	CRADLE MOUNT MEDIUM #8 SCREW	100/BAG	1M
10046	CRADLE MOUNT LARGE #10 SCREW	100/BAG	1M
10079	CRADLE MOUNT LARGE 1/4"/6.35mm SCREW BLACK HEAT STABILIZED	100/BAG	1M

CABLE TIE MOUNTS STABILIZE AND SECURE WIRING BUNDLES IN A VARIETY OF APPLICATIONS.

For additional information or to help identify your needs call a distributor today or call us and we will refer you to a distributor. You may already be working with them!