

VGA/UXGA MATRIX SWITCHER

SHARE UP TO 16 VIDEO DISPLAY BETWEEN TWO COMPUTERS

A combination of up to sixteen monitors, projectors, HDTV with VGA can be shared between two computers. This amplified matrix switcher provides front-panel control and high bandwidth to maintain video integrity. Ideal for presentations, classrooms, remote monitoring, data centers, retail show rooms and training facilities.

FEATURES:

- Provides 250MHz bandwidth for video clarity
- Connects multiple video sources to multiple screens
- Supports VGA/UXGA monitors up to 1920x1440 resolution
- Built-in signal booster extends video signal up to 200ft
- Uses heavy duty case with anti-scratch rubber feet
- VESA DDC (DDC1, DDC2, DDC2B) compliant



SPECIFICATION:

Bandwidth	250MHz (-3dB)
Maximum Resolution	1920x1440 @ 60Hz
Horizontal Frequency	90KHz (max)
Vertical Frequency	85MHz (Max)
Transmission Distance	200ft
LEDs	Online/Selected Port
Port Selector	Front Panel Push Button
Input Ports	HD15 Female
Output Port	HD15 Female
Power Supply	Includes 7.5vAC 800mA



**2x2 Switcher
(MSV602PHX2)**

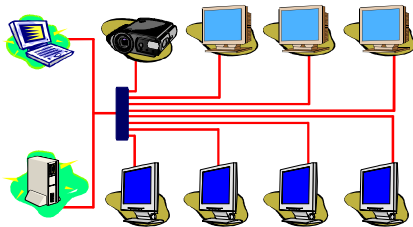
Connects two computers to two monitors, projectors or any video displays with VGA interface. Provides LEDs and front panel push buttons. (Connectors: 4 HD15 Female)



**2x4 Switcher
(MSV604PHX2)**

Connects four computers to two monitors, projectors or any video displays with VGA interface. Provides LEDs and front panel push buttons. (Connectors: 6 HD15 Female)

APPLICATION DIAGRAM:



**2x8 Switcher
(MSV608PHX2)**

Connects two computers to two monitors, projectors or any video displays with VGA interface. Provides LEDs and front panel push buttons. (Connectors: 10 HD15 Female)



**2x16 Rack-Mountable Switcher
(MSV616PHX2)**

Connects sixteen computers to two monitors, projectors or any video displays with VGA interface. Provides LEDs and front panel push buttons. (Connectors: 18 HD15 Female)