

SourceFlex™ System

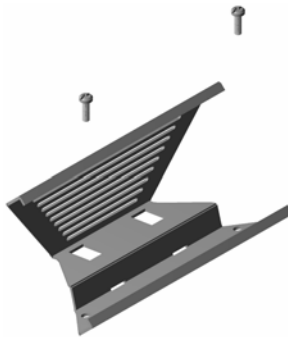
Model SAS-HC8

Headphone Control Listening Station

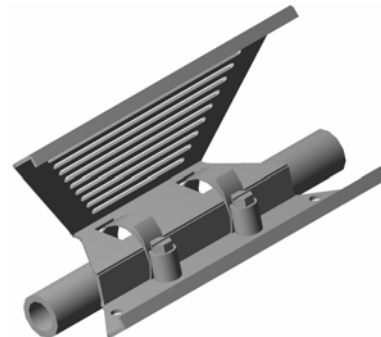
Installation/Operation



EN55103-1 E1-E5; EN55103-2 E1-E4
Typical Performance reflects product at publication time exclusive of EMC data, if any, supplied with product. Specifications are subject to change without notice.

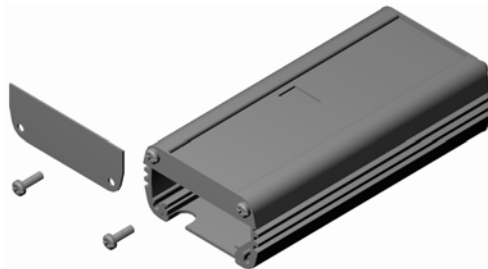


OR



Install mounting bracket to flat surface using either the screw holes or slots provided for the mounting screws.

Install bracket to pipe or tubing using the smallest possible clamp provided. The clamp must be oriented as shown with the "tail" inside the bracket.

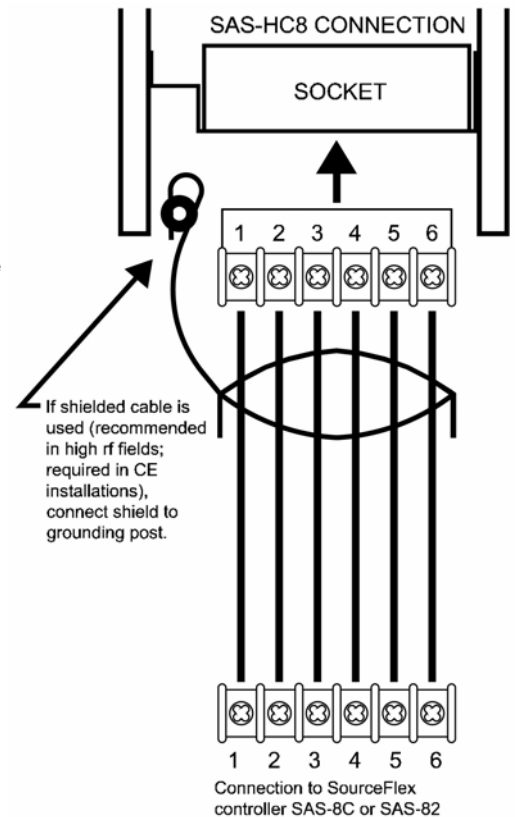


Remove the lower (larger) cover at the left end of the unit using the two screws shown. Connect the wires from the SOURCEFLEX controller as indicated in the connection diagram. Secure cover.



Secure the unit in the mounting bracket:

- First, seat the bottom bracket in the SAS-HC8 bottom rear slot;
- Then tilt the unit back until it snaps and locks into position.



To operate SAS-HC8: Plug in headphone, select desired source and adjust up/down level buttons for a comfortable audio level. If headphones are left unplugged 15 seconds, the volume returns to minimum to protect the next user.

TYPICAL PERFORMANCE

Input:	6-position terminal block
Display:	7-segment red LED (0 = off or Paging; 1 through 8 = selected channel)
Control Buttons:	Replaceable, protected by moisture-resistant polycarbonate
Controls:	Momentary button channel SELECT
	Momentary button volume ramp UP
	Momentary button volume ramp DOWN
	5 seconds nominal for 40 dB audio level adjustment
Ramp Rate:	50 Hz to 35 kHz (+/-1 dB)
Frequency Response:	< 0.1% (20 Hz to 20 kHz) @ 1 kHz
THD+N:	dc (RAMP and CONTROL conductors between remote Listening Station and Controller)
Control Signals:	1/4 in. (6.35 mm) headphone jack or 1/8 in. (mini) headphone jack
Output Jacks (2):	200 mW RMS into 100 Ohms, adjustable (normal system audio input operating level applied)
Amplified Output:	Bracket with clamps included, mounts to flat surface or to tubing 0.75 in. (1.9 cm) to 1.5 in. (3.8 cm) diameter
Mounting:	RDL ULTRASTYLE™ design
Finish:	

Radio Design Labs Technical Support Centers

U.S.A. (800) 933-1780, (928) 778-3554; Fax: (928) 778-3506

Europe [NH Amsterdam] (+31) 20-6238 983; Fax: (+31) 20-6225-287