

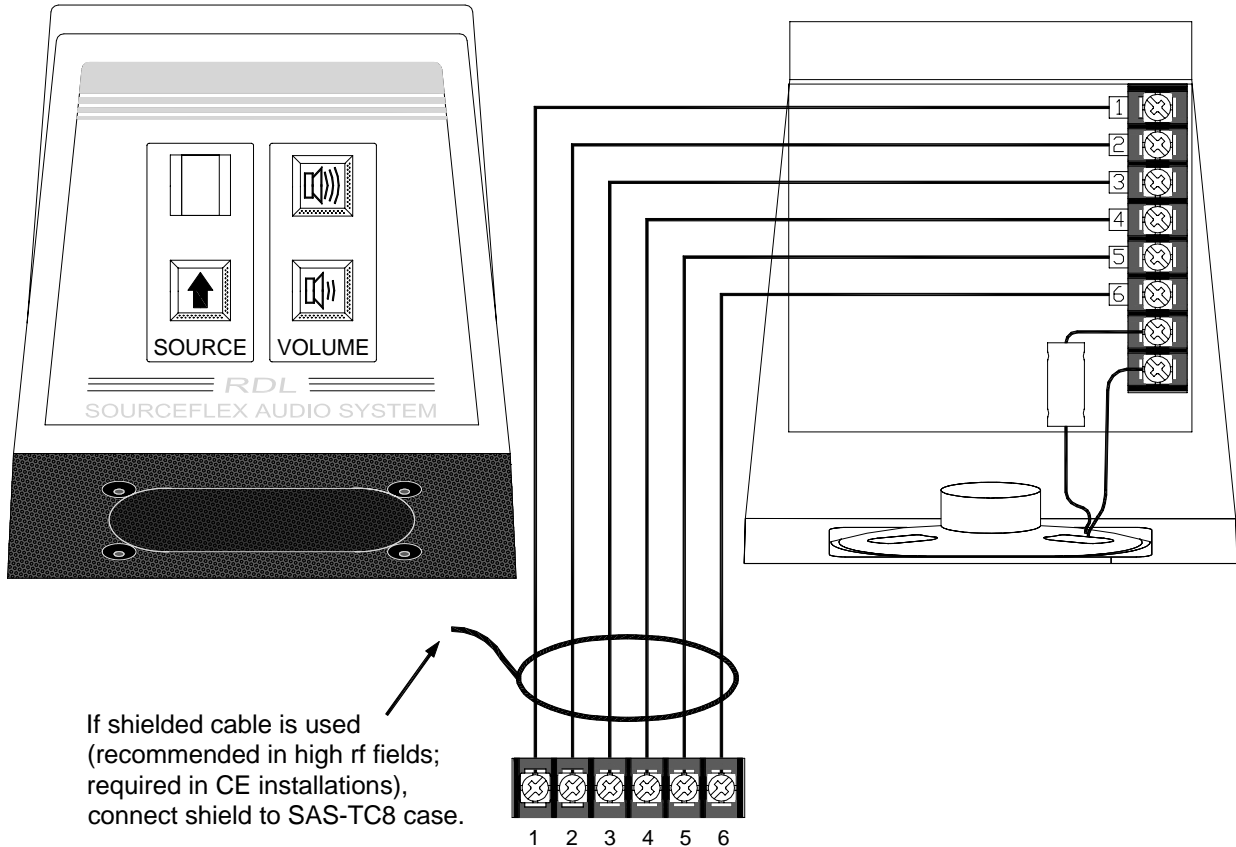


## SourceFlex™ System Model SAS-TC8 Tabletop Listening Station

## Installation/Operation



EN55103-1 E1-E5; EN55103-2 E1-E4  
Typical Performance reflects product at publication time  
exclusive of EMC data, if any, supplied with product.  
Specifications are subject to change without notice.



Connection to SourceFlex controller  
SAS-8C, SAS-8i or SAS-82

### TYPICAL PERFORMANCE

Input:	6-position terminal block
Display:	7-segment red LED (0 = off or Paging; 1 through 8 = selected channel)
Control buttons (3):	Recessed, protected by moisture-resistant polycarbonate
Controls:	Momentary button channel SELECT
	Momentary button volume ramp UP
	Momentary button volume ramp DOWN
Ramp Rate:	5 seconds nominal for 40 dB audio level adjustment
Frequency Response:	Optimized for tabletop intelligibility
THD+N:	< 0.1% (20 Hz to 20 kHz) @ 1 kHz
Wall Mounting (above tabletop):	U.S.: Mounts to single electrical box, RDL WB-1U wall box or directly to wall
	International: Mounts to RDL WB-1U wall box or directly to wall
Table edge Mounting:	Mounts to table edge using optional SAS-TEM bracket
Finish:	RDL <i>ULTRASTYLE</i> design

Radio Design Labs Technical Support Centers

U.S.A. (800) 933-1780, (928) 778-3554; Fax: (928) 778-3506

Europe [NH Amsterdam] (+31) 20-6238 983; Fax: (+31) 20-6225-287