

Network Recorder: The recorder monitors your radio network for audio packets and records those that meet your criteria. These are stored as raw PCM audio and then compressed into MP3 files. A 32-bit digital signature is added to the file to guarantee its authenticity. Both RX and TX audio are stored and separated for search purposes. The Network Recorder can record radio traffic from standard Vega VoIP formatted lines, EF Johnson 2600 series P25 digital repeaters and also perform positional recording. The positional recorder lets you record the Select, Unselect, and Mic audio of a specific console.

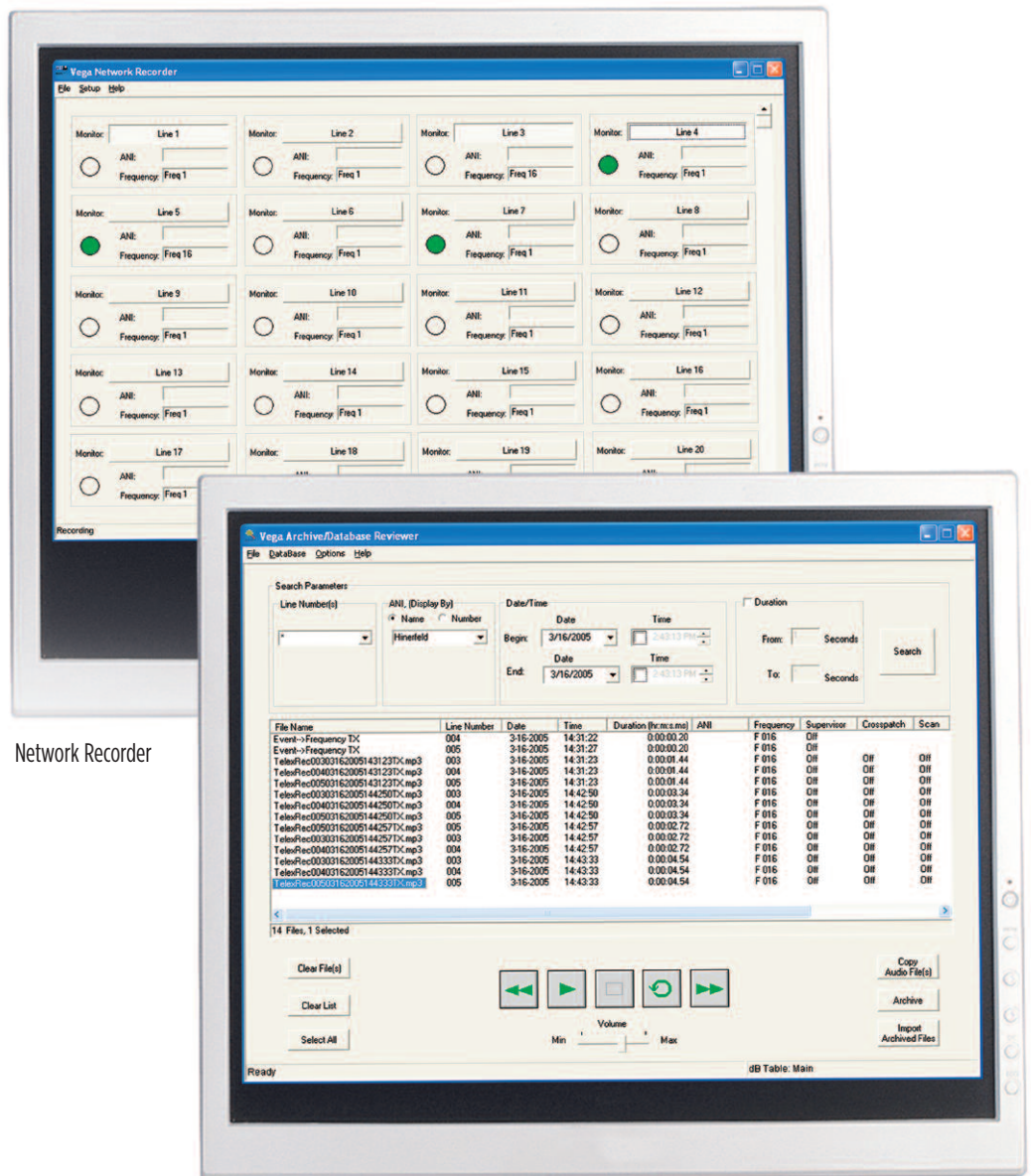
Network Search Engine: The Network Search Engine can search the recorder computer using these parameters: ANI, line number, date, time and call duration. Unrelated calls can be removed from the search screen, and calls of interest can be copied for playback on another computer or an MP3 player. Large groups of calls can be archived for permanent storage and to clear disk space. Archived calls can then be brought back into the database for later review.

Network Recorder

The Telex Network Recorder allows you to monitor and record audio for any channel in real time. Plus, it stores detailed information for each call and event in an SQL database for quick and easy retrieval. This includes:

- Source IP addresses
- Channel changes
- Crosspatch creation and teardown
- Supervisor mode start and end
- ANI
- Time
- Date
- Line number
- Call duration
- Scan status
- NEO-10 relay and input logging

Using the Telex Network Recorder, you can access an extensive amount of call information and sort and refine your searches with a high level of detail. For example, you can search for all calls made by a particular user during a particular time period on a particular channel.



Network Recorder

Network Search Engine