



Specifications Overview

Print Method:	Dye-Sublimation / Resin Thermal Transfer
Resolution:	300 dpi (11.8 dots/mm)
Colors:	Up to 16.7 million / 256 shades
Print Ribbon Options:	<ul style="list-style-type: none"> • Full-color with resin black and overlay panel, YMCKO*, 250 prints • Full-color half-panel with resin black and overlay panel, YMCKO*, 350 prints • Full-color with two resin black panels and overlay panel, YMCKOK*, 200 prints • Full-color with fluorescing, resin black and overlay panel, YMCFKO*, 200 prints • Dye-sublimation black and overlay panel, BO*, 500 prints • Resin black and overlay panel, KO, 500 prints • Resin black, 1,000 prints; green, blue, red, white, 1,000 prints; silver and gold, 500 prints <p><i>YMCKO, YMCKO half-panel and YMCKOK ribbons are available in both disposable and refillable ribbon cartridges.</i></p>
Print Speed:**	Batch Mode: <ul style="list-style-type: none"> • 7 seconds per card (K)* • 12 seconds per card (KO)* • 27 seconds per card (YMCKO)* • 35 seconds per card (YMCKOK)*
Accepted Standard Card Sizes:	CR-80 (3.375"L x 2.125"W / 85.6mmL x 54mmW) CR-79 Adhesive Back (3.313"L x 2.063"W / 84.1mmL x 52.4mmW)
Print Area:	CR-80 edge-to-edge (3.36"L x 2.11"W / 85.3mmL x 53.7mmW) CR-79 (3.3"L x 2.04"W / 83.8mmL x 51.8mmW)
Accepted Card Thickness:	20 mil to 30 mil (.020" to .030" / .51mm to .76mm)
Accepted Card Types:	PVC or polyester cards with polished PVC finish; monochrome resin required for 100% polyester cards; optical memory cards with PVC finish
Input Hopper Card Capacity:	100 cards each (.030" / .762mm)
Output Hopper Card Capacity:	Up to 30 cards (.030" / .762mm)
Card Cleaning:	Card cleaning roller integrated into ribbon cartridge; cleaning roller is automatically replaced with each new ribbon used
Memory:	2MB RAM
Display:	Easy-to-read, backlit LCD Control Panel
Software Drivers:	Windows® 98SE/Me/2000/XP/Server 2003/Vista
Interface:	USB 1.1 (USB 2.0 compatible); optional 10/100 Ethernet with internal print server (replaces USB connection)
Operating Temperature:	65° to 80° F / 18° to 27° C
Humidity:	20-80% non-condensing
Dimensions:	7.9"H x 13.62"W x 8.14"D / 201mmH x 346mmW x 207mmD (single-sided printer) 7.9"H x 18.28"W x 8.14"D / 201mmH x 464mmW x 207mmD (with dual-sided and/or e-card encoding module)
Weight:	Single-Sided: 8 lbs. / 3.63 kg Dual-Sided: 11.55 lbs. / 5.22 kg
Agency Listings:	Safety: UL 60950-1, CSA C22.2 (60950-1), and CE EMC: FCC Class A, CRC c1374, CE (EN 55022 Class A, EN 55024)
Supply Voltage:	100-240 VAC, 3.3A
Supply Frequency:	50 Hz / 60 Hz
Warranty:	<ul style="list-style-type: none"> • Printer – Two years including free loaner printer in the first year (U.S. only); optional Extended Warranty Program (U.S. only) • Printhead – Two years, unlimited pass with UltraCard™ Cards
Fargo Secure Materials:	Fargo Card Printer/Encoders require highly specialized media to function properly. To maximize printed card quality and durability, printhead life and printer/encoder reliability, use only Fargo Secure Materials. Fargo warranties are void, where not prohibited by law, when non-Fargo Secure Materials are used.
Encoding Options:	<ul style="list-style-type: none"> • ISO Magnetic Stripe Encoding, dual high- and low-coercivity, Tracks 1, 2, and 3 • Contact Smart Card Docking Station • Contactless Smart Card Encoder (HID® iCLASS®, MIFARE® and MIFARE DESFire) • Contact Smart Card Encoder reads from and writes to all ISO7816-1/2/3/4 memory and microprocessor smart cards (T = 0, T = 1) as well as synchronous cards • Prox Card Reader (HID read-only)
Options:	<ul style="list-style-type: none"> • Dual-sided Printing Module – Field-upgradeable • Magnetic Stripe Encoding Module – Field-upgradeable • E-card Encoding Modules – Field-upgradeable • Printer cleaning kit • Ethernet networking with internal print server (replaces USB connection) • 100-card output hopper with or without reject tray



*Indicates the ribbon type and the number of ribbon panels printed where Y=Yellow, M=Magenta, C=Cyan, K=Resin Black, F=Fluorescing

**Print speed indicates an approximate print speed and is measured from the time a card drops into the output hopper. Print speeds do not include encoding time or the time needed for the PC to process the image. Process time is dependent on the size of the file, the CPU, amount of RAM and the amount of available resources at the time of the print.

The Fargo DTC400 Card Printer/Encoder has been tested to ensure that it meets Microsoft® standards for Windows® compatibility. Microsoft, Windows, and the Windows logo are trademarks, or registered trademarks of Microsoft Corporation in the United States and/or other countries.

Your Total Solution

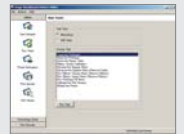
Every Fargo printer/encoder is the central component of a complete Fargo Card Identity System. We also offer software, materials, cameras and accessories — everything you need from one trusted source, for a total solution to your card printing needs.

Software

Fargo printer/encoders work with Fargo Asure ID® applications and all other leading card creation and issuance management software.



Fargo printer/encoders also come with Fargo Workbench™, a software toolkit for set up, printer security, diagnostics and firmware upgrades.



Materials

Fargo ribbons, films, overlaminates, and other materials not only ensure superior print quality for long-lasting, great-looking cards, they add features that increase durability and resist counterfeiting. That means fewer card replacements and lower cost per card.



Cameras and Accessories

Fargo offers a selection of digital cameras, photo lighting equipment and backgrounds, plus card accessories such as lanyards and clips.



This data sheet is for informational purposes only. Fargo Electronics makes no warranties, expressed or implied, in this summary. Company and product names and data used in sample output are fictitious. Specifications are subject to change without notice. Asure ID Solo, Asure ID Express, Asure ID Enterprise and Asure ID Exchange are trademarks and Asure ID is a registered trademark of HID Global Corporation. Workbench and UltraCard are trademarks and Fargo is a registered trademark of Fargo Electronics, Inc. All other trademarks and registered trademarks are property of their respective companies. This is not an offer of sale.

© 2007, Fargo Electronics, Inc. All rights reserved.

REV0709