



DRAWERS AND SHELVES FOR ENCLOSURE SYSTEMS

PCD3-16, PD Series
SA Series, SD Series
SH Series, VTD16, DK19-3



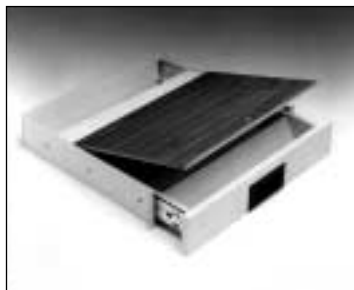
SD10-145



SD10-165FP



PD10-165FP



PCD3-16

FEATURES

- Selection Includes: Storage, Platform, and Pencil Drawers; General Purpose, Heavy-Duty, Sliding, and Vented Shelves
- Flush and Recessed Models Meet Functional and Aesthetic Requirements

STORAGE DRAWERS FOR 19" CABINETS

SD / SD-FP Series*. Recessed or flush (FP) mounting models are offered in multiple panel space sizes, two depths, and with full extension slides for storing tapes, CD's, microphones, tools, and other accessories in 19" cabinets. Units feature ball-bearing slides for smooth opening and closure. They also include detents to assist when securing drawer in closed position. Sturdy, 16-gauge CRS assemblies will support 100 lbs (45.39kg). Inside width of all models is 16⁵/₁₆" (414mm). Please specify color. Note: recessed drawers are ideal for use with 300/320 Series wall cabinets. Series 300, 400, & 600 will only accept 14¹/₂"D SD/SD-FP models.

RECESSED STORAGE DRAWERS				
MODEL	PANEL SPACE	RACK UNIT	DRAWER DEPTH	EXTENSION
SD5-145**	5 ¹ / ₄ " (133mm)	3	14 ¹³ / ₃₂ " (366mm)**	14" (356mm)
SD7-145**	7" (178mm)	4	14 ¹³ / ₃₂ " (366mm)**	14" (356mm)
SD7-165	7" (178mm)	4	16 ¹ / ₂ " (417mm)	16" (406mm)
SD10-145**	10 ¹ / ₂ " (267mm)	6	14 ¹³ / ₃₂ " (366mm)**	14" (356mm)
SD10-165	10 ¹ / ₂ " (267mm)	6	16 ¹ / ₂ " (417mm)	16" (406mm)
FLUSH STORAGE DRAWERS				
SD3-165FP	3 ¹ / ₂ " (90mm)	2	16 ¹ / ₂ " (417mm)	16" (406mm)
SD5-165FP	5 ¹ / ₄ " (133mm)	3	16 ¹ / ₂ " (417mm)	16" (406mm)
SD7-145FP**	7" (178mm)	4	14 ¹³ / ₃₂ " (366mm)**	14" (356mm)
SD10-165FP	10 ¹ / ₂ " (267mm)	6	16 ¹ / ₂ " (417mm)	16" (406mm)

** Note: 300, 400, & 600 Series cabinets will only accept 14¹/₂"D SD/SD-FP models.

SLIDING SHELVES WITH FRONT PANELS FOR 19" CABINETS

PD / PD-FP Series*. These open-side sliding drawers are designed for easy access to equipment with top or side-mounted controls. Recessed and flush (FP) mounting models are available for 19" cabinets (except 300, 400, & 600 Series). Chassis is mounted on full-extension slides with ball-bearing rollers and detents to assist when securing drawer in closed position. Units also include a 1/4" (6mm) thick wood grain masonite base. Units are 16-gauge CRS with load capacity of 100 lbs. (45.39kg). All panel models are formed on four sides. Please specify color. Note: recessed drawer is ideal for use with 320 Series wall cabinets.

RECESSED PLATFORM DRAWER				
MODEL	PANEL SPACE	RACK UNIT	PLATFORM DEPTH	EXTENSION
PD10-165	10 ¹ / ₂ " (267mm)	6	16 ¹³ / ₃₂ " (417mm)	16" (406mm)
FLUSH PLATFORM DRAWER				
PD10-165FP	10 ¹ / ₂ " (267mm)	6	16 ¹ / ₂ " (417mm)	16" (406mm)

PENCIL DRAWER FOR 19" CABINETS

PCD3-16. Dual-function sliding pencil drawer features a storage area covered by a lift-up writing surface. Unit is constructed of 18-gauge CRS and flush mounts in 19" cabinets (except 300, 400, & 600 Series). Hinged writing surface is 16⁵/₁₆" wide particleboard covered with wood grain laminate.

MODEL	PANEL SPACE	RACK UNIT	DEPTH	WIDTH	EXTENSION
PCD3-16	3 ¹ / ₂ " (90mm)	2	16 ¹³ / ₃₂ " (417mm)	16 ⁵ / ₁₆ " (414mm)	16" (406mm)

* Note: cabinet installations with flush-mounting front doors require recessed drawer models to ensure clearance of drawer handle.

Specifications subject to change without notice

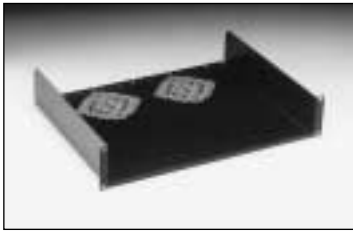


1601 JACK MCKAY BLVD. / ENNIS, TEXAS 75119 U.S.A. / TELEPHONE: (800) 876-3333 / FAX (800) 765-3435

ALL-PURPOSE SHELVES FOR 19" CABINETS

(Except 300, 400, & 600 Series)

SH19 Series / SH503. Economical recessed shelf assemblies for 19" cabinets provide dependable support for shelf-mounted power supplies, amplifiers, relay packs, tone generators, and all types of electronic equipment that does not include rack-mount hardware. The SH19 models are 14" deep for standard depth cabinets. Model SH19-3A features ventilation cutouts which allow for dissipation of equipment-generated heat. Cutouts will accommodate customer-installed 4" tubeaxial fans (by others). SH19-5 and SH19-7 have a solid bottom. Model SH503 is 20" deep to accommodate equipment mounted in extra-depth cabinets. All can be secured using a single pair of front mounting rails. Shelves are 16-ga.CRS and include mounting holes on E.I.A. standard spacing, and choice of standard colors/finishes. The SH19 Series supports 100 lbs. (45.39kg); Model SH503 supports 70 lbs. (31.75kg).



SH19-3A



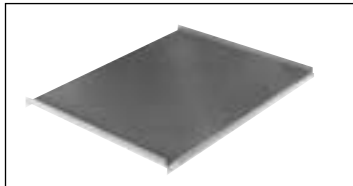
SH19-7



SH503



VTD16



SH2000-25



DK19-3

MODEL	PANEL SPACE	RU	WIDTH	DEPTH	MOUNTS TO
SH19-3A	3½" (90mm)	2	17½" (445mm)	14" (356mm)	19" W x 18½" D Cabinets
SH19-5	5¼" (133mm)	3	17½" (445mm)	14" (356mm)	
SH19-7	7" (178mm)	4	17½" (445mm)	14" (356mm)	
SH503	5¼" (133mm)	3	17½" (445mm)	20" (508mm)	19" W x 25½" D WA202, 502, Series 5000(T), VI, & VII, 30" Deep 503 Series

SLIDING SHELF/TRAY FOR 19" CABINETS

VTD16. Versatile shelf can be used upside-down as a tray with a protective lip or right-side up as a shelf. Unit provides easy access to 16¾" wide (max.) keyboards, video tape recorders, and control equipment. Solid bearing slides extend 17" outside of cabinet rails and include lock-out protection. It mounts 19" W cabinets that are 18½" to 25½" deep which are equipped with front and rear mounting rails. The 16-ga. CRS assembly is finished in black epoxy. It supports up to 85 lbs. (38.56kg) and includes necessary hardware.

MODEL	PANEL SPACE	RACK UNIT	WIDTH	DEPTH	EXT	MOUNTS TO*
VTD16	1¾" (44mm)	1	16¾" (425mm)	16" (406mm)	17" (432mm)	19" W x 18½" D to 19" W x 25½" D Cabinets

* Requires front and rear mounting rails Note: Rails can be adjusted any place in between

HEAVY-DUTY SHELVES FOR SERIES 5000, SERIES VI, & SERIES VII - ONLY

SH2000 Series. Sturdy shelves are designed for use with front and rear mounting rails to provide dependable support for heavy equipment such as large power supplies, amplifiers, video tape recorders, computers, and control systems. Selection includes models for installation in 19" racks having 25½" and 30" depths. One-piece units are constructed of 16-ga. CRS and support up to 100 lbs. (68.04kg). Series features oblong mounting holes for attachment to "Z" channel style rail Series R-5000/RT-5000. Available in choice of standard colors and finishes.

MODEL	WIDTH	HEIGHT	DEPTH	MOUNTS TO 5000, VI, & VII
SH2000-25	17½" (449mm)	¾" (16mm)	21¼" (540mm)	19" W x 25½" D Racks*
SH2000-30	17½" (449mm)	¾" (16mm)	25¾" (654mm)	19" W x 30" D Racks*

*Requires front and rear mounting rails

ECONOMICAL EXTERIOR SHELF / WRITING SURFACE

DK19-3. Cost-efficient shelf attaches to front mounting rails of standard 19" wide cabinets for application as an exterior component mounting shelf or writing surface. Shelf is walnut grain formica-covered particleboard supported by 16-gauge CRS spot welded brackets. Brackets are finished in choice of standard colors and include mounting hardware.

MODEL	RU	DIMENSIONS	MOUNTS
DK19-3	2	17½" W x 12" D x 3¾" H (445 x 305 x 87mm)	19" wide cabinets

SUPPORT ANGLE BRACKETS FOR SERIES 5000, VI & VII - ONLY

SA-25 / SA-30. Universal "L" brackets for 25½" and 30" deep cabinets (as suffixed) span vertical columns front-to-back to provide additional support for heavy equipment. These 11-ga. CRS models are finished in black textured epoxy. Refer to the application and installation specifications of the Series SH2000 models described above.

Specifications subject to change without notice



1601 JACK MCKAY BLVD. / ENNIS, TEXAS 75119 U.S.A. / TELEPHONE: (800) 876-3333 / FAX (800) 765-3435