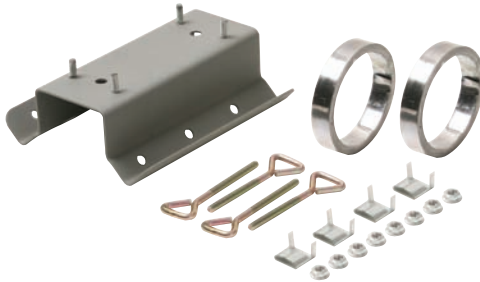




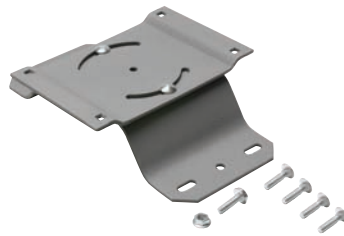
221-110 Roof Mount



221-350 Chimney Mount



221-352 "J" Pipe Mount



221-351 Eave Mount Bracket



221-353 Wall Mount Brackets



221-306 6"
221-312 12"
221-318 18"



400-911 60"

Non-Penetrating Roof Mount

221-110 Non-Penetrating Roof Mount
Mounts DBS satellite dish safely and securely on rooftop
Ideal for Dish Antennas up to 24" (60cm) Wide with Metal Foot Mounts
Eliminates need for fasteners
Ensures smooth and fast satellite antenna mounting
Accepts standard-size concrete building blocks as anchors
Sturdy Steel Construction
Includes foot-mounting bolts, nuts and washers
37¹/₂" (L) x 24¹/₂" (D)

Satellite Dish Mounts

221-350 Chimney Mount for Satellite Dish
Ideal for Dish Antennas up to 24" (60cm) Wide
Includes galvanized steel brackets, mounting straps and hardware

221-351 Satellite Dish Eave Mount Bracket
Use for attaching satellite dish to building
Ideal for Dish Antennas up to 24" (60cm) Wide
No Need to Drill Holes in Roof or Sidewalls
Pivots in center with slots on either side allow use at any pitch or angle

221-352 "J" Pipe Mount
Designed for Outdoor Antennas on Side of House or Roof
Mount foot can be used on either end of pipe for best mounting
Steel Construction – 36" Long
Electro-Coated for Maximum Protection

221-353 Wall Mount Antenna Brackets
W-Type Wall Mount Antenna Brackets with 4" Clearance from Wall
Attaches antenna mast to side of building
Set of Two Brackets
Includes mounting hardware

Y-Type Wall Brackets

Y-Type Wall Mount Brackets for Off-Air TV Antennas
Attaches antenna mast to side of building
Zinc-Plated Steel Construction – 6", 12" or 18" Sizes
Set of Two Brackets
Includes mounting hardware

221-306 6" Y-Type Wall Bracket

221-312 12" Y-Type Wall Bracket

221-318 18" Y-Type Wall Bracket

Self-Sealing Tape

400-911 Sealing Adhesive Tape
Suitable for Weatherproofing Connections During Installation
Weather-Resistant Black PVC
Provides instant watertight seal
Protects metal from corrosion
20 mil thick – 1/2" (W) X 60" (L)