



**251-503** F – Gold



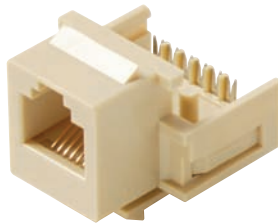
**251-505** RCA Red – Gold  
**251-506** RCA White – Gold



**251-507** RCA/F Red – Gold  
**251-508** RCA/F White – Gold



**251-509** Binding Post/Banana  
Red Band – Gold  
**251-510** Binding Post/Banana  
Black Band – Gold



**310-106** □ □ 6x6 Almond, Black, Ivory,  
Light Almond, White



**310-110** □ □ RJ45 Almond, Black,  
Blue, Green, Ivory,  
Light Almond, Orange,  
Red, White, Yellow



**310-120** □ □ RJ45 Almond, Black,  
Blue, Green, Ivory,  
Light Almond, Orange,  
Red, White, Yellow

### A/V Connectors

Gold-Plated Brass Construction  
Mounts tightly into Steren's Decorator-Style Inserts  
F and RCA Connectors Available with Red or White Insulators  
Binding Post/Banana Connectors Available with  
Red or Black Bands

- 251-503** Single F Female/F Female – Gold Plated
- 251-505** Single RCA Coupler Female/Female,  
Red – Gold Plated
- 251-506** Single RCA Coupler Female/Female,  
White – Gold Plated
- 251-507** Single RCA Female/F Female,  
Red – Gold Plated
- 251-508** Single RCA Female/F Female,  
White – Gold Plated
- 251-509** Single Binding Post/Banana Female-  
Female, Red Band – Gold Plated
- 251-510** Single Binding Post/Banana Female-  
Female, Black Band – Gold Plated

### Keystone Modular Jacks

Category-3 Voice Grade UL Listed Keystone Jacks  
Quick Snap-Down-Cover Termination  
Beryllium-Copper Modular Jack Contacts  
Hard-Gold Plating over Nickel Plating  
22-26 AWG IDC Contacts  
UL-94V0 Thermoplastic ABS Housing

- 310-106AL** 6x6 RJ11 Almond Keystone Jack
- 310-106BK** 6x6 RJ11 Black Keystone Jack
- 310-106IV** 6x6 RJ11 Ivory Keystone Jack
- 310-106LA** 6x6 RJ11 Light Almond Keystone Jack
- 310-106WH** 6x6 RJ11 White Keystone Jack

*See Steren Catalog pg. D9  
for more products in this category*

### Category-5E Keystone Jacks

Category-5E UL Verified and Listed Jacks  
8-Conductor Beryllium-Copper Modular Jack Contacts  
Hard-Gold Plating over Nickel Plating  
22-26 AWG 110-IDC Contacts  
UL-94V0 Thermoplastic ABS Housing  
Conforms to ANSI/TIA/EIA T568A/B standard – 350MHz  
Conforms to FCC Part 68.5 requirements

- 310-110AL** RJ45 Almond CAT5E Keystone Jack
- 310-110BK** RJ45 Black CAT5E Keystone Jack
- 310-110BL** RJ45 Blue CAT5E Keystone Jack
- 310-110GR** RJ45 Green CAT5E Keystone Jack
- 310-110IV** RJ45 Ivory CAT5E Keystone Jack
- 310-110LA** RJ45 Light Almond CAT5E Keystone Jack
- 310-110OR** RJ45 Orange CAT5E Keystone Jack
- 310-110RD** RJ45 Red CAT5E Keystone Jack
- 310-110WH** RJ45 White CAT5E Keystone Jack
- 310-110YL** RJ45 Yellow CAT5E Keystone Jack
- 310-120AL** RJ45 Almond CAT5E 90° Keystone Jack
- 310-120BK** RJ45 Black CAT5E 90° Keystone Jack
- 310-120BL** RJ45 Blue CAT5E 90° Keystone Jack
- 310-120GR** RJ45 Green CAT5E 90° Keystone Jack
- 310-120IV** RJ45 Ivory CAT5E 90° Keystone Jack
- 310-120LA** RJ45 Light Almond CAT5E 90°  
Keystone Jack
- 310-120OR** RJ45 Orange CAT5E 90° Keystone Jack
- 310-120RD** RJ45 Red CAT5E 90° Keystone Jack
- 310-120WH** RJ45 White CAT5E 90° Keystone Jack
- 310-120YL** RJ45 Yellow CAT5E 90° Keystone Jack