

Vivadish, a Versatile Plate for Multiwell Cell Culture and for Parallel Handling of Glass Slides



Vivadish is a tiny lab helper with four parallel chambers that enable multiple simultaneous cell culture experiments or a series of cell fixation and staining steps to be performed in one plate.

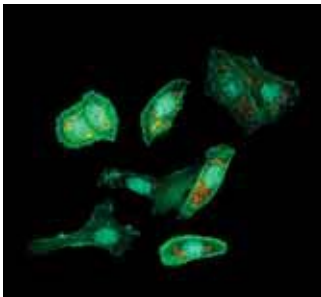
Two surface qualities for multiwell cell culture

Vivadish is available with two different surfaces: microbiological grade polystyrene for non-adherent cell culture, or tissue culture grade surface to support growth of adherent cells. The dishes therefore serve as single-use multiwell cell culture plates. The excellent optical quality of both Vivadish base and lid allows the microscopic inspection of the cells during culture as well as in situ examination by fluorescence-based assays after their staining.



Four parallel chambers to accommodate standard microscope slides

A variety of cell-based laboratory techniques, like karyotyping, cytotoxicity assays and FISH, require parallel sample processing onto glass slides. Vivadish microbiological grade serves as the all-in-one solution for the simultaneous preparation of four slide mounts and their subsequent analysis by high resolution microscopy. Each of the four Vivadish chambers features a V-shaped indentation to facilitate easy handling and removal of the slides. Vivadish is also suitable for experiments employing glass-slide arrays.



Standard format for convenient handling

Vivadish outer dimensions comply with the standards of the Society of Biomolecular Screening (SBS). The plate fits into standard plate readers, microscope stage adapters for multiwell plates and automated plate handling devices.

An optimal surface-to-volume ratio assures minimal space consumption when Vivadish is stacked in standard cell culture incubators. Vivadish is supplied in 10-unit sterile packs (gamma-irradiated) and is certified DNase-free, RNase-free and non-pyrogenic.