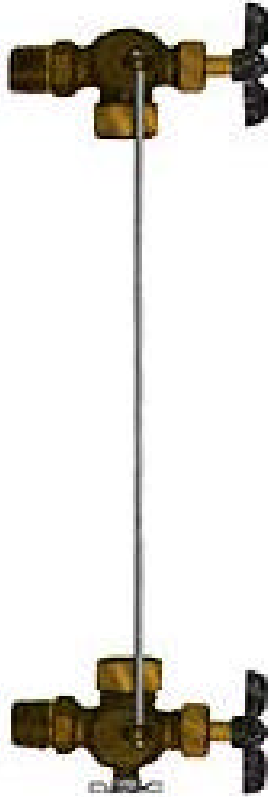




# UNITED BRASS WORKS, INC.

714 S. Main St., Randleman, NC 27317

Tel: 800-334-3035 Fax: 800-498-4696 www.ubw.com



## Model 34014 1/2" Long Shank Gauge Fixture Set w/ Ball Check

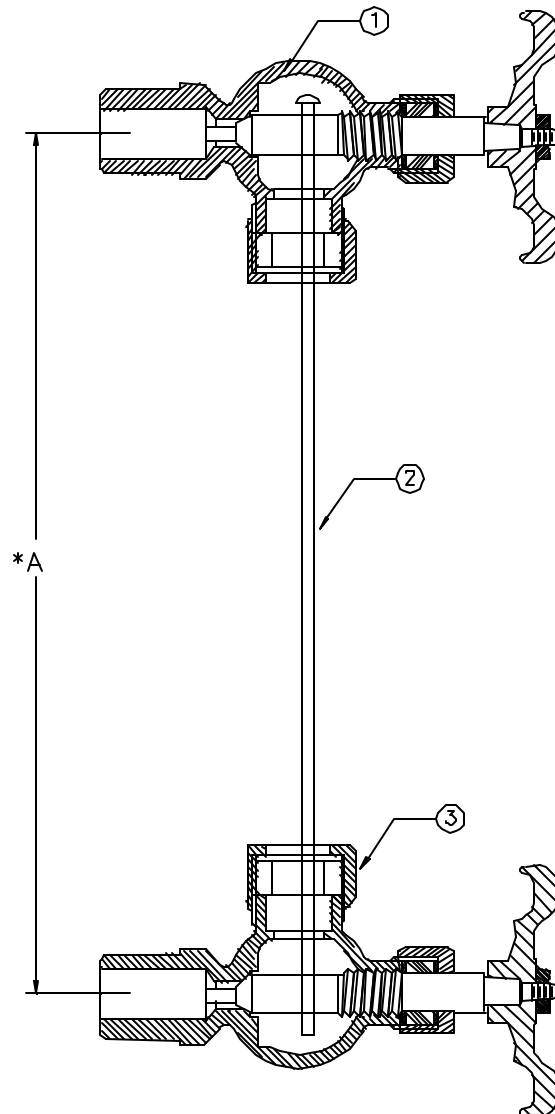
250 WSP @ 406°F Max

400WOG

Rising Stem

Aluminum Hand Wheel

Ball Check to Prevent Leakage, if glass breaks



### MATERIAL LIST

NO.	DESCRIPTION	MATERIAL
1	Upper Fixture	See Specs for 905S 1/2"
2	Protector Rods	Steel
3	Lower Fixture	See Specs for 946S 1/2"

\* A To determine proper glass length, subtract 1 1/8" from center to center dimensions of the installed valves.