



UNITED BRASS WORKS, INC.

714 S. Main St., Randleman, NC 27317

Tel: 800-334-3035 Fax: 800-498-4696 www.ubw.com



Model 849B 3/4" Steam Trap

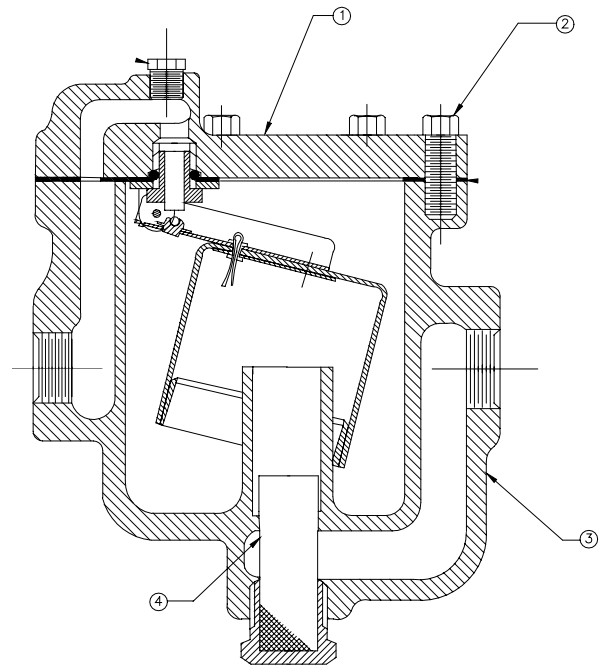
150WSP Body Rating
Operating Range 5 – 50PSI
Ductile Iron Construction
Stainless Steel Ball & Seat

E-Coated inside & out
for Corrosion Resistance

Replacement cover assembly Model 850AL.

MATERIAL LIST

| NO. | DESCRIPTION | MATERIAL |
|-----|----------------|-----------------|
| 1 | Cover Assembly | Ductile Iron |
| 2 | Cap Screw | Plated Steel |
| 3 | Body | Ductile Iron |
| 4 | Strainer | Stainless Steel |
| | | |



Operating Pressure

| Model | PSI | 5 | 10 | 20 | 30 | 40 | 50 |
|-----------|----------------------------|-----|-----|-----|-----|-----|-----|
| 849A 3/4" | Pounds Condensate Per Hour | 383 | 461 | 566 | 629 | 681 | 765 |