



# UNITED BRASS WORKS, INC.

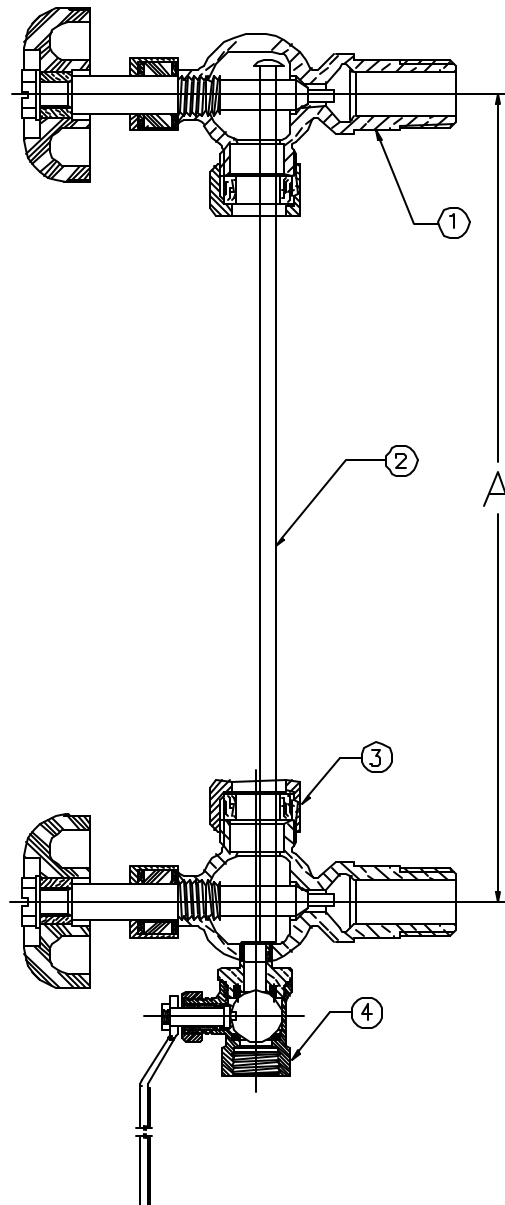
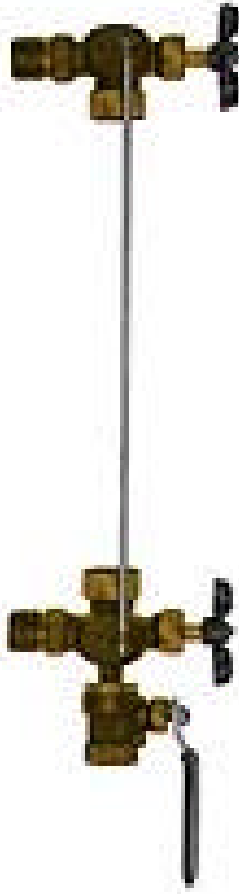
714 S. Main St., Randleman, NC 27317

Tel: 800-334-3035 Fax: 800-498-4696 www.ubw.com



## Model 34013 1/2" Long Shank Gauge Fixture Set w/ Ball Valve & Plastic Hand Wheel

250 WSP @ 406°F Max  
400WOG • Rising Stem  
Plastic Hand Wheel  
Ball Valve for Blow Off



### MATERIAL LIST

NO.	DESCRIPTION	MATERIAL
1	Upper Fixture	See Specs for 905PW1/2"
2	Protector Rods	Steel
3	Lower Fixture	See Specs for 946XF 1/2"
4	Ball Valves	See Specs for 80MXF 1/4"

\*A To determine proper glass length, subtract 1 1/8" from center to center dimensions of the installed valves.