



UNITED BRASS WORKS, INC.

714 S. Main St., Randleman, NC 27317

Tel: 800-334-3035 Fax: 800-498-4696 www.ubw.com



Model 849A 3/4" Steam Trap

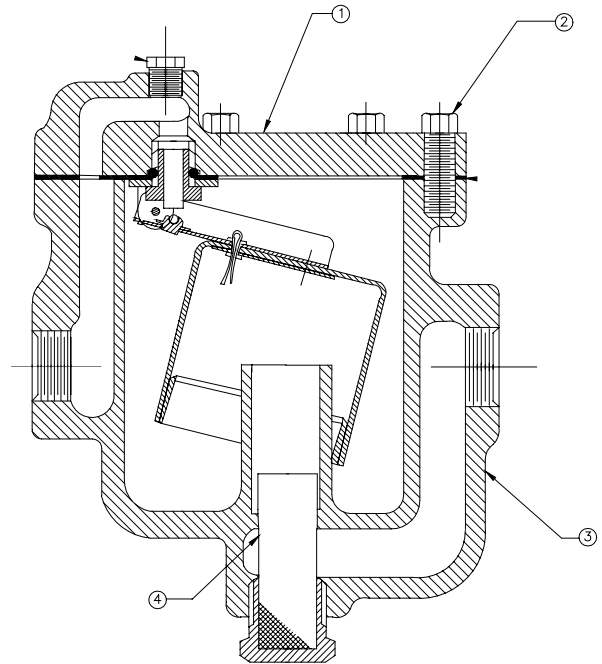
150WSP Body Rating
Operating Range 50 – 125PSI
Ductile Iron Construction
Stainless Steel Ball & Seat

E-Coated inside & out
for Corrosion Resistance

Replacement cover assembly Model 850F.

MATERIAL LIST

NO.	DESCRIPTION	MATERIAL
1	Cover Assembly	Ductile Iron
2	Cap Screw	Plated Steel
3	Body	Ductile Iron
4	Strainer	Stainless Steel



Operating Pressure

Model	PSI	60	80	100	125
849A 3/4"	Pounds Condensate Per Hour	384	416	466	496