



# UNITED BRASS WORKS, INC.

714 S. Main St., Randleman, NC 27317

Tel: 800-334-3035 Fax: 800-498-4696 www.ubw.com



## Model 34036

**1/2" Short Shank Gauge Fixture Set w/ Plastic Hand Wheel, Ball Valve & Ball Check**

**250 WSP @ 406°F Max**

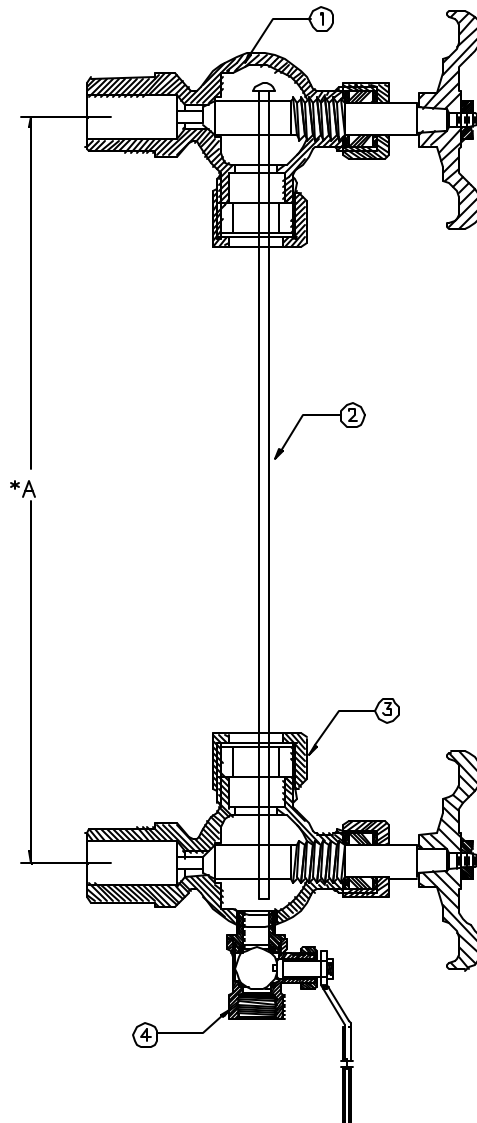
**400WOG**

**Rising Stem**

**Plastic Hand Wheel**

**Ball Valve for Blow Off**

**Ball Check to Prevent Leakage, if glass breaks**



### MATERIAL LIST

NO.	DESCRIPTION	MATERIAL
1	Upper Fixture	See Specs for 905SPW 1/2"
2	Protector Rods	Steel
3	Lower Fixture	See Specs for 946XFS 1/2"
4	Ball Valve	See Specs for 80MXF 1/4"

\* A *To determine proper glass length, subtract 1 1/8" from center to center dimensions of the installed valves.*