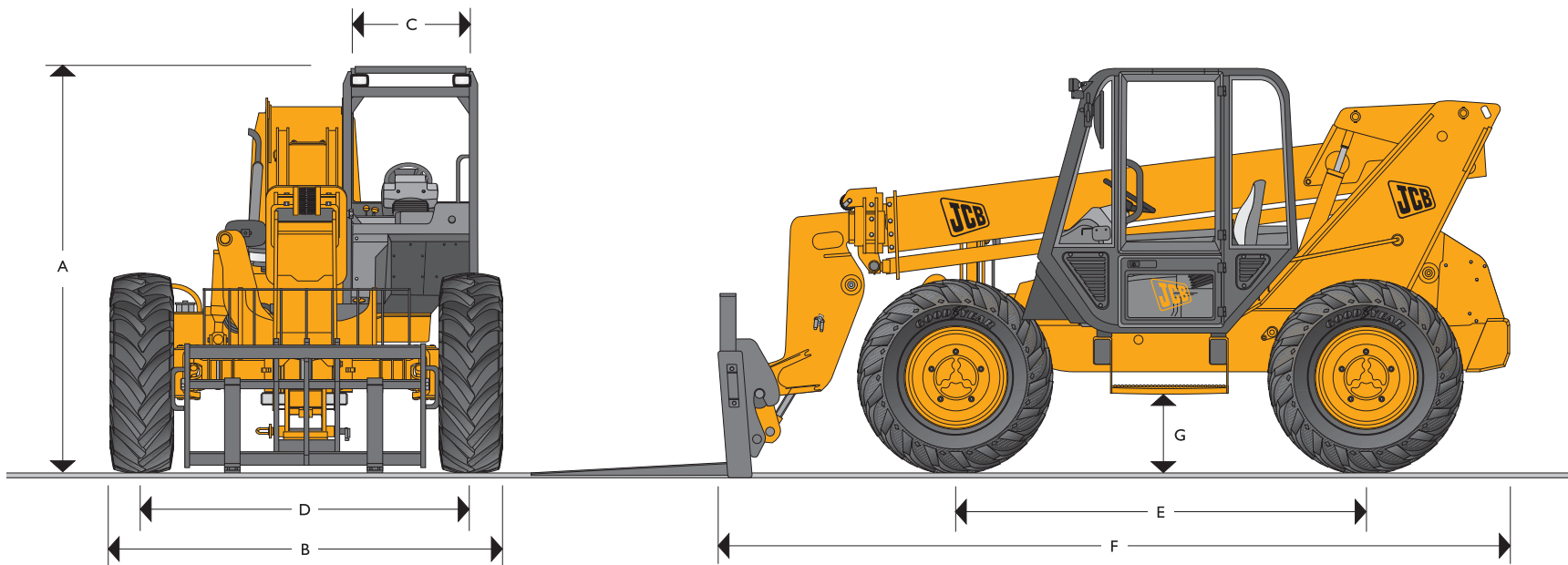




JCB LOADALL | 506C



MAX. PAYLOAD: 6000lbs (2722kg)
 MAX. LIFT HEIGHT: 36ft 0in (11.0 meters)



JCB LOADALL | 506C

STATIC DIMENSIONS

Machine model	506C
	ft-in (m)
A Overall height	8-8 (2.67)
B Overall width (over tires)*	7-8 (2.34)
C Inside width of cab	3-0 (0.93)
D Front track	6-3 (1.92)
E Wheelbase	9-2 (2.78)

Machine model	506C
	ft-in (m)
F Overall length to front carriage	17-6 (5.34)
G Ground clearance	1-4 (0.41)
Outside turn radius (over tires)	13-6 (4.12)
Weight	lb (kg) 21040 (9543)
Tires	13.00x24

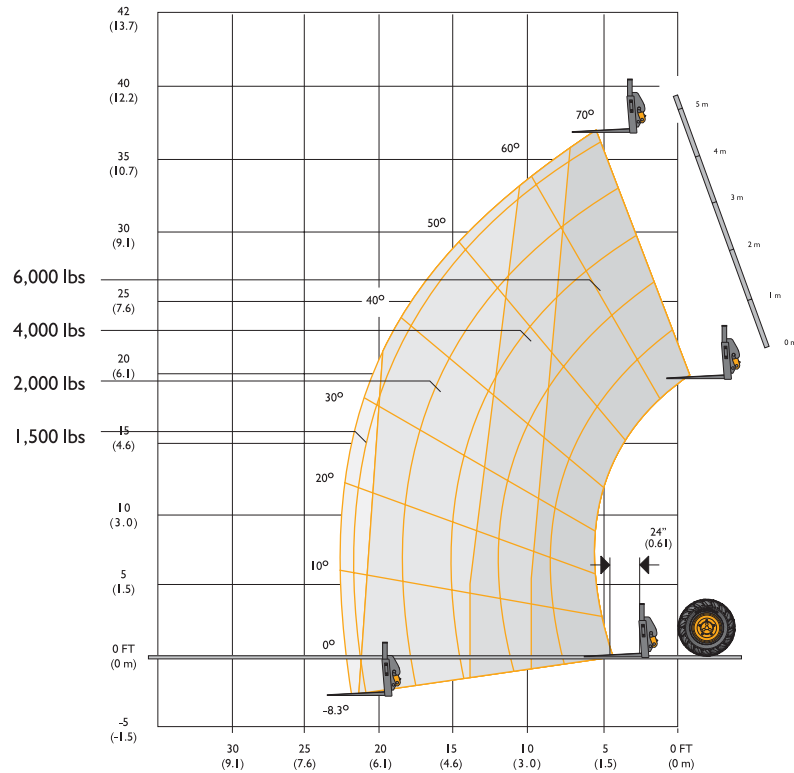
*Dependant upon tire specified.



JCB LOADALL | 506C



LIFT PERFORMANCE



Chassis Levelling (Sway)

LIFT PERFORMANCE

Maximum lift capacity	lb (kg)	6000 (2722)
Lift capacity to full height	lb (kg)	6000 (2722)
Lift capacity at full reach	lb (kg)	2000 (907)
Lift height	ft-in (m)	36-0 (11.0)
Reach at maximum lift height	ft-in (m)	5-5 (1.65)
Maximum forward reach	ft-in (m)	22-9 (7.0)

Complies with stability test ASME B56.6 1992.

JCB LOADALL | 506C



JCB LOADALL | 506C



JCB LOADALL | 506C

ENGINE

Latest technology and advanced design provides low fuel consumption, reduced noise, high torque and power output, total reliability and minimal maintenance.
Two-stage, dry type air filter with primary and safety elements.

Machine Model – 506C		Standard	Option
Displacement	in ³ (ltr)	269 (4.4)	269 (4.4)
No. of cylinders		4	4
Bore size	in (mm)	4.13 (105)	4.13 (105)
Stroke	in (mm)	5 (127)	5 (127)
Aspiration		Naturally aspirated	Turbo
Power rating			
Power @ 2200rpm	HP (kW)	82.5(62)	100 (74.5)
Torque rating			
Torque @ 1400rpm	lbf ft (Nm)	277 (308)	306 (415)

TRANSMISSION

JCB transmission incorporating torque converter, 4 speed synchromesh gearbox in one resiliently mounted unit.
JCB powershift transmission optional.
Travel speed 15.5mph (25kph).

Front and rear drive axles: JCB epicyclic hub reduction drive/steer axles with Max-Trac torque proportioning differentials.
Permanent 4 wheel drive.

BRAKES

Service brakes: Servo-assisted-hydraulically activated, self-adjusting, oil-immersed multi-disc type on front and rear axle.
Parking brake: Hand operated disc brake on output of gearbox.

BOOM AND CARRIAGE

Boom is manufactured from high tensile steel.
Low maintenance, hard wearing pads.
JCB Toolcarrier for quick attachment changes.
One boom end auxiliary hydraulic service fitted as standard.

SAFETY CHECK VALVES

Fitted to carriage tilt, telescopic and boom lift rams.

SERVICE CAPACITIES

Fuel tank	US gal (ltrs)	35 (132)
Hydraulic tank	US gal (ltrs)	32 (121)
Coolant	US gal (ltrs)	6.2 (23.5)

HYDRAULICS

Two stage gear pump with suction strainer and filter.

Operating system pressure	psi (bar)	3500 (241)
Pump flow	US gal/min (ltrs/min)	29.11 (110)
Hydraulic Cycle Times		Seconds
Boom raise		13.6
Boom lower		9.1
Extend		10.4
Retract		12.2
Bucket dump		4.2
Bucket crowd		3.8

ELECTRICS

12 v negative ground. 92 AH battery. 65 amp alternator. Reverse alarm.

CAB

Quiet, safe and comfortable cab conforms to ROPS ISO 3471 and FOPS ISO 3449. Tinted glass all round with laminated roof glass. Roof bars, front, rear and roof glass with wash/wipe and heater/defroster. Opening rear window. Audio-visual warning system for coolant temperature, engine oil pressure, air cleaner, battery charge, transmission oil temperature and pressure. Hourmeter and road speed indicator. Engine temperature and fuel gauge. Joystick control lever. Adjustable steering column incorporates forward/reverse shuttle lever. Throttle and brake pedal. Adjustable suspension seat with adjacent mechanically actuated park brake. Includes leveling inclinometer. Safety canopy as above but with side glass and roof glass only (wiper and heater/defroster not applicable).

STEERING

Hydrostatic power steering.
Three steer mode options: front wheel steer; all wheel steer; crab steer: operated from in the cab by a selection lever.

OPTIONS AND ACCESSORIES

Options: Front and rear work lights, industrial tires, windshield and roof guard, radio kit, block heater.
Attachments: Contact your local dealer for details of the comprehensive range.



JCB LOADALL | 506C



JCB LOADALL | 506C

A GLOBAL COMMITMENT TO QUALITY

JCB's total commitment to its products and customers has helped it grow from a one-man business into the World's 5th largest manufacturer of backhoe loaders, crawler excavators, wheeled excavators, telescopic handlers, wheel loaders, dump trucks, rough terrain fork lifts, industrial fork lifts, mini/midi excavators, skid steer loaders and tractors.

By making constant and massive investments in the latest production technology, the JCB factories have become some of the most advanced in the World.

By leading the field in innovative research and design, extensive testing and stringent quality control, JCB machines have become renowned all over the world for performance, value and reliability.

And with a global sales and service network of over 400 distributors and agents, the company exports over 70% of its production to all five continents.

Through setting the standards by which others are judged, JCB has become one of Britain's most impressive success stories.



JCB Headquarters Savannah, 2000 Bamford Blvd., Pooler, GA 31322. Tel: 912.447.2000. Fax: 912.447.2299. www.jcb.com

JCB reserves the right to change design, materials and/or specifications without notice. Specifications are applicable to units sold in the United States and Canada. The JCB logo is a registered trademark of J C Bamford Excavators Ltd.

Helping You Get
the Job Done!