

MODEL 37

1.5% LOW PRESSURE GAUGES

Designed for use where pressure of less than 10 psi is to be measured.



SPECIFICATIONS:

Dial Size:	4"
Accuracy:	±1.5% FS - ANSI Grade A
Case:	304SS
Bezel:	304SS Bayonet Lock Type
Socket:	316SS
Capsule:	316SS
Movement:	Brass
Lens:	Laminated Safety Glass
Pointer:	Aluminum
Dial:	Heavy Gage Aluminum
Adjustment:	Adjustable Set Screw
Connection:	1/4" or 1/2" NPT Lower & Lower Back (Fully Welded)
Range:	See Range Chart
Protection Standard:	IP65 in accordance with NF EN 60529

MODEL CODES:

Model 37S 316SS Capsule and Socket, 304SS Case

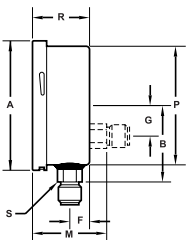
▶ AVAILABLE OPTIONS:

- Front Flange (back mount only)
- Back Flange
- U-Clamp

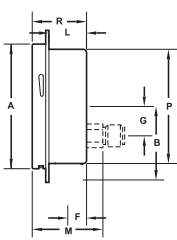
Estimated Shipping Weight	
DIAL SIZE	DRY
4"	1 lb. 10 oz.

▶ AVAILABLE CASE STYLES AND DIMENSIONS:

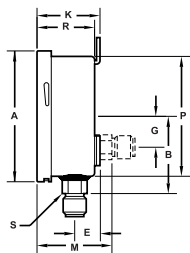
LOWER & BACK



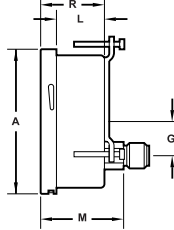
FRONT FLANGE



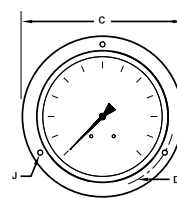
BACK FLANGE



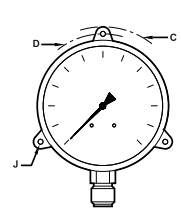
U-CLAMP



FRONT FLANGE
FRONT VIEW



BACK FLANGE
FRONT VIEW



DIAL	A	B	C	D	E	F	G	J	K	L	M	P	R	S
4"	4.18" (106,2mm)	2.68" (68mm)	5.12" (130mm)	4.65" (118mm)	1.00" (25,4mm)	0.91" (23mm)	1.24" (31,5mm)	0.22" (5,5mm)	2.22" (56,4mm)	1.55" (39,3mm)	2.81" (71,5mm)	3.86" (98mm)	2.14" (54,5mm)	.87" (22mm)



Tel-Tru Manufacturing Company
 408 St. Paul Street, Rochester, New York 14605 USA
 Phone: 585.232.1440 • 800.232.5335 • Fax: 585.232.3857 • E-mail: info@teltru.com • Web: www.teltru.com

► HOW TO ORDER:

To Build A Part Number: Select one code from each column to build your gauge.

DIAL	MODEL CODE	TUBE & SOCKET	CASE	CONN. SIZE	CONN. LOCATION	CONN. TYPE	RANGE & SCALE	OPTIONS
4"	40 37	S = 316SS	S = Stainless Steel	2 = 1/2" 4 = 1/4"	L = Lower B = Lower Back	1 = NPT	See Range Chart	E = Back Flange F = Front Flange* V = U-Clamp

*Available on Back Mount only

Example:

Specs: 4", Model 37, 316SS, 1/4" Lower, NPT, 0-30 IW, Back Flange

Select:

40 37	S	S	4	L	1	C6P	E
-------	---	---	---	---	---	-----	---

Ordering Format: 4037SS4L1C6PE

► STANDARD RANGES:

CODE = RANGE	INTERVALS	DIVISIONS
B1A = 0-5 psi	.5	.05
B4A = 0-10 psi	1	.1
V1P = -30-0 IWV	5	.2
B4P = 0-10 IW	1	.1
B7P = 0-15 IW	3	.1
C6P = 0-30 IW	5	.2
D6P = 0-60 IW	10	.5
D9P = 0-100 IW	10	1
E3P = 0-150 IW	30	1

NOTE: OTHER RANGES AVAILABLE.