

# Legger Presses

## 46X

### Automatic Legger-Utility Dry Cleaning Press

The Unipress Model 46X Automatic Legger-Utility Press is designed with the owner in mind. Operators will love the fast smooth action as well as the extra wide head opening. Owners appreciate the low capital cost, reliability and minimal floor space. Combine these features with the following ones and you have a press that can't be beat.



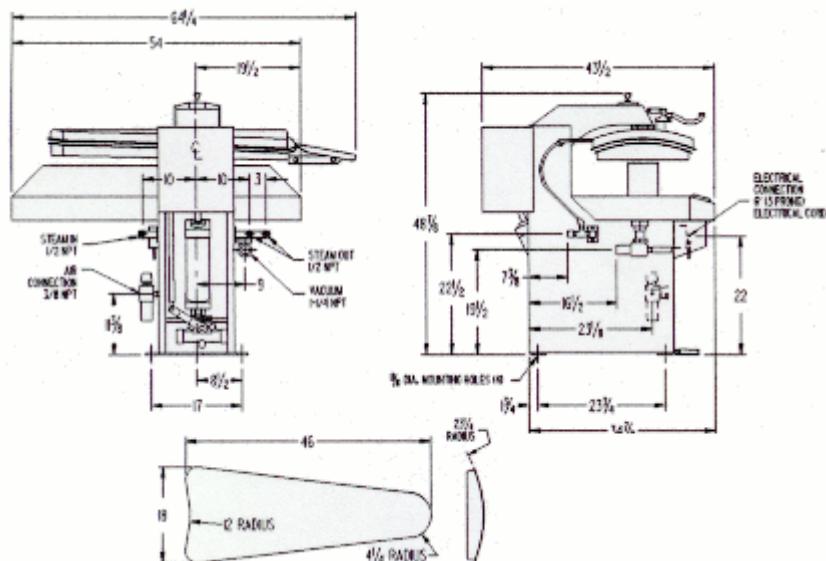
For use with any of these models:

[STF Topper](#)  
[TFE-PA](#)  
[MTF Topper](#)  
[19MX Topper](#)  
[PI-1 Puff Iron](#)

### Features

- Automatic / Manual Operation
- Microprocessor Controls with Self Diagnostics
- Durable Construction
- Finger Tip Pressure Adjustment
- Quiet Operation
- Adjustable Timers
- Designed and Manufactured in the USA
- Single Action Cylinder

### Specifications



# 46XH

## Automatic Hot Head Legger-Utility Scissor Press

The perfect combination to improve your quality and increase your production. These presses are specifically designed to help you conquer the challenges of a changing market. The 46XH and 19MXH feature highly polished, nickel plated heads. The open chamber design of the head facilitates an even heat transfer across the head. Thus, providing the temperatures necessary to quickly finish cotton pants. The 46XH features an automatic cycle that allows the operator to top while the legs are being finished. Both units are built to Unipress' exacting standards. Each press is equipped with microprocessor controls and has self-diagnostic capabilities. The microprocessor assures reliability and ease of trouble shooting. The fast, smooth opening and closing of the head are enough to make any presser smile.



### Features

- Automatic / Manual Operation
- Microprocessor Controls with Self Diagnostics
- Durable Construction
- Finger Tip Pressure
- Quiet Operation
- Adjustable Timers
- Designed and Manufactured in the USA

### Specifications

