

Universal Pressing System

USCS

The USCS has set new standards for pressing long and short garments by improving quality and increasing production. This single operator unit beautifully finishes the body and the sleeves simultaneously. While the body is being pressed by two contoured chests, the sleeves are injected with live steam followed by super heated air. The steam is injected into the sleeves to loosen and relax the fibers, then the super heated air smooths, dries, and beautifully finishes. This time saving system eliminates the need for a separate sleever, thereby saving valuable floor space.

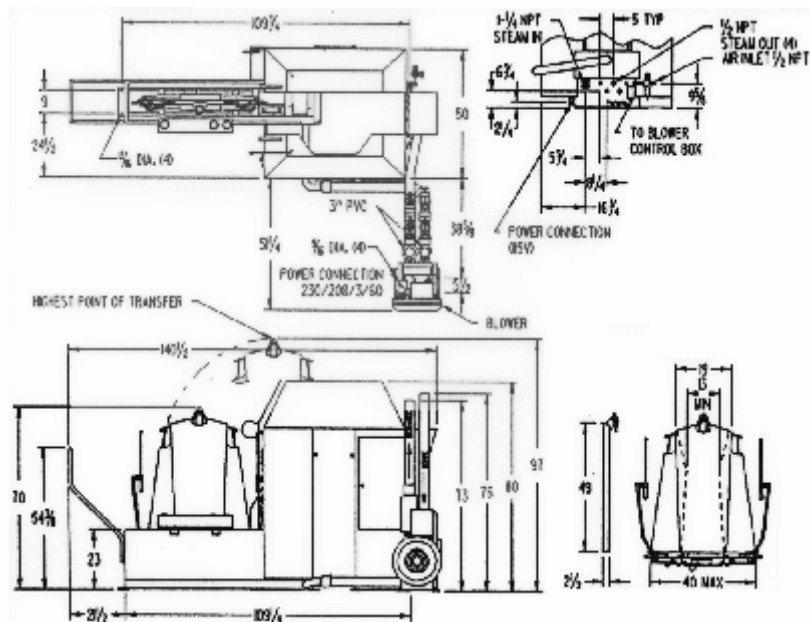


The unique shape of the buck allows it to be dressed quickly and easily as well as handle the widest variety of garments. The highest quality standards can be achieved for all types of garments including lab coats, chef coats, warm-ups, and executive shirts. Quality is assured due to the USCS's formed vacuum buck, non-porous air bag, contoured chests, steam injection, and heat exchanger.

Designed, built, and tested to the toughest standards in the industry, the USCS will provide years of trouble-free service. Its overall rugged construction is enhanced by microprocessor controls with self-diagnostics, centrally located air valves, and color coded air lines.

A two-stage buck transfer system is instrumental in reducing operator fatigue and helps to maintain production and quality standards. Once the operator dresses the top half of the garment, the buck is raised by stepping on a foot switch so that the bottom of the garment can be dressed without having to bend and stretch. As the operator finishes loading, the buck transfer is completed by a single cylinder. This advanced, but simplistic transfer system requires a minimum of parts, reducing wear and tear.

Features



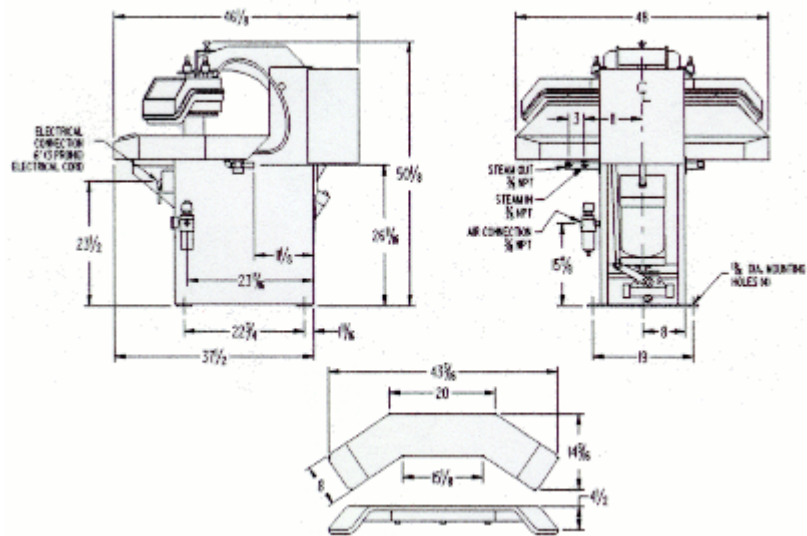
ULC

Universal Lapel Collar & Cuff Press

Features

- Easy to dress
- High pressure squeeze cylinder
- Solid state controls with timer
- Rugged construction
- Smooth operation





ULP

Universal Lapel Press

Features

- Easy to dress
- High pressure squeeze cylinder
- Solid state controls with timer
- Rugged construction
- Smooth operation



