

"NewSentry"® PVC Enclosures

PVC

The "NewSentry"® PVC Enclosures

The "NewSentry" Series is a range of corrosion resistant, watertight PVC enclosures featuring ten sizes of simple screw down covers. The enclosures are a perfect complement to fiberglass products when used as junction boxes and small auxiliary enclosures.

Each enclosure is assembled with a PVC gasket that ensures compatibility with the enclosure's substrate and, through cellular resiliency in stretching and compressing, enables longevity in the interaction between cover and gasket spanning a wide potential temperature range.

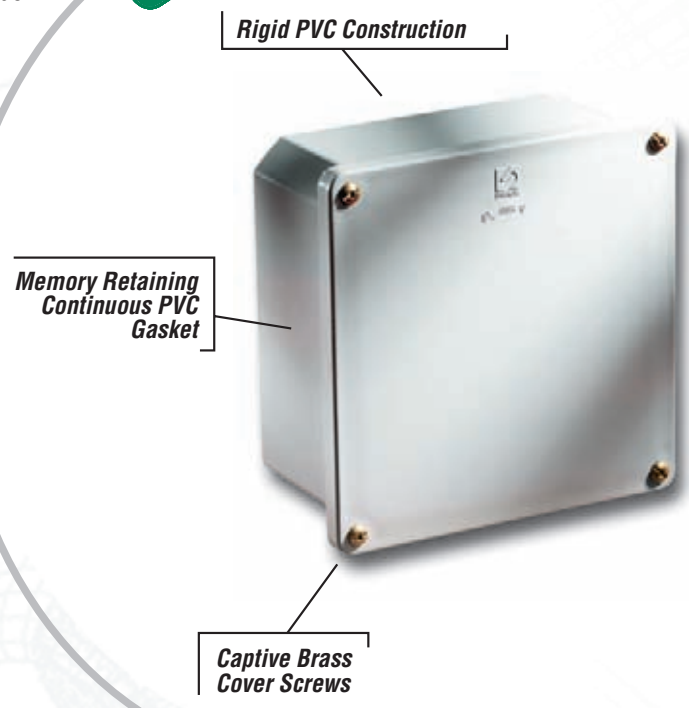
Mounting feet are integral on smaller sizes and included as add-on's with all larger enclosures. Captive brass cover screws meet threaded brass inserts to secure covers and provide assurance against wear and tear from repeated use.

"NewSentry" series enclosures are designed for general electrical and electronic applications and any application that has associated environmental concerns.

"NewSentry"® Series Attributes

- Memory retaining continuous PVC gasket
- Threaded inserts and captive brass cover screws
- Corrosion resistant PVC material
- Molded in or add on mounting feet
- Available in ten classic sizes

"NewSentry"® Featured Highlights



"NewSentry"® Series Specifications



- Corrosion Resistant
- Water tight
- Rated type 1, 2, 3, 4, 4X, 12, 13
- UL/cUL approved
- CSA approved

The "NewSentry"® Series is Applicable for Many Industries including:

Standard Junction Box



Conveyors and Elevators



Marine and Marinas



Waste Water & Processing





"NewSentry®" Series

- Ten sizes of PVC enclosures
- (J_PVC)



NewSentry® Series

PVC



NewSentry PVC enclosures are classic junction box enclosures designed to terminate long wire runs or to house terminal blocks. Stahlin NewSentry enclosures offer a versatile solution through the use of this corrosion resistant, waterproof design making it ideal for

agricultural applications, marinas, water treatment plants, car washes and residential applications.

The "PVC" Series consists of ten square shapes that offer both shallow and deep dimensions. The series is particularly useful where only tight or dense spaces are available.

NewSentry Ordering Information

Use the information below to derive specific catalog numbers. Stahlin catalog numbers first begin with Family ID, then size ID and configuration ID as a suffix. See the example below.

Ordering Information - Deriving Catalog Numbers			
Family ID	Size ID	Configuration ID	EXAMPLE
J	442	PVC	"J442PVC"

"NewSentry" Series - Configurations

Configuration ID	DESCRIPTION
PVC	4 cover screws, lift off cover configuration

"NewSentry" Series - Inside Dimensions

Size ID	H x W x D
442	4 x 4 x 2
444	4 x 4 x 4
446	4 x 4 x 6
552	5 x 5 x 2
664	6 x 6 x 4
666	6 x 6 x 6
884	8 x 8 x 4
887	8 x 8 x 7
12124	12 x 12 x 4
12126	12 x 12 x 6

"NewSentry" Series Shared Characteristics

Construction

Material	Polyvinyl chloride (PVC)
Gasket	PVC seamless gasket provides water-tight, dust-tight environmental seal
Brass Screws	Screw down to brass inserts
Mounting Feet	Built in on designated models. Add on feet available for other models
Soft Edge Design	Rounded edges, minimal protrusions or exposed pocket areas for assembly of dust and debris

Physical Characteristics

Non corrosive	Stands up to an exceptionally broad range of chemical exposures
Water-tight	Rated watertight
Impact resistant	Resilient material with excellent high impact resistance
Non Conductive	Double insulated material. No incidental electrical contact
Light weight	Solid construction in a lightweight design
Workable material	Cuts, drills, punches, and saws with ease and accuracy
Color/Finish	Attractive light grey finish

Industry Standards

UL/cUL 514B Fittings,	File E190961
514C Boxes	Type 1, 2, 3, 4, 4X, 12, 13
NEMA 250	Type 1, 2, 3, 4, 4X, 12, 13
CSA Std C22.2 No. 85	File 207025 Type 1, 2, 3, 4, 4X, 12, 13
Temperature Range	(-4°F to +140°F) (-20°C to +60°C)
Flammability Rating	UL94V-0
Self extinguishing	Non-flame propagating
Chemical Resistance	Full chemical resistance charts listed in appendix

"NewSentry" Series Configurations

PVC 4 cover screws, lift off cover

Design Features

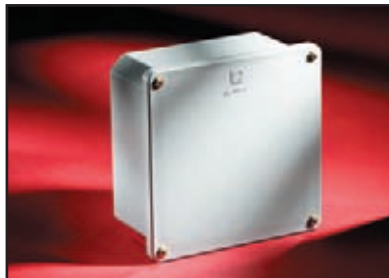
- Lift off cover design
- PVC door gasket
- Captive brass cover screws
- Brass inserts for all screws
- Modest overhang cover design
- Integral mounting feet available on some models
- Add on mounting feet for larger sizes



NewSentry Family



NewSentry
J442PVC



NewSentry
J664PVC



NewSentry Coupling
JCOUP Family

NewSentry Adapter
JADAPT Family



NewSentry Terminal Adapter
JTADAPT Family

