



1184-14 AG OTR Series



The AG Force 1184-14 AG OTR truck comes with many features designed with the user in mind. The 14' all aluminum body is lightweight and dependable to maximize the payload. This versatile tire service body features an abundance of storage and 272 cubic feet of haul space. The floor of the body is made of sturdy aluminum planking, and the hardware is durable stainless steel. The tool compartment doors slide up and in to allow for easy access inside the compartment. Also featured on the 1184-14 AG body is a left fold-down rack, and optional wheel well lights. The body of the 1184-14 AG features a drop-down floor to give a low center of gravity for the 400 gal. calcium chloride tank. This allows for maximum storage of the tank, maximum hauling space for the tires, and eliminates any interference with the crane.



Shown in the photo below are the optional hose reels, a 12V trouble light, plastic storage bins and socket racks. The hoses shown are 1/2" x 50' and 3/8" x 50'. Also in the left front compartment is the customer preferred Stellar exclusive Hydrafill System. The 1184-14AG can also be equipped with an air operated Fill Master pumping system. The 400 gal. calcium chloride tank is equipped with the new, Stellar-exclusive Flush-Out system mounted on the right front side of the body.



The 1184-14AG truck can be equipped with either a model 2200, 3200 or 4500 hydraulic knuckleboom crane. These cranes are designed to handle the largest of farm tires and the smaller sized OTR tires. These cranes are both operated by a standard fully proportional radio remote control. Capacity specifications are found on the back of this brochure.

The SHD-66DD direct-driven hydraulic-drive air compressor is mounted on the crane base. This compressor has a 46 CFM at 175 PSI output. The location allows for cool, clean, fresh air intake, and easy maintenance and serviceability. The SHD-66DD carries a 2-year warranty because of these features.

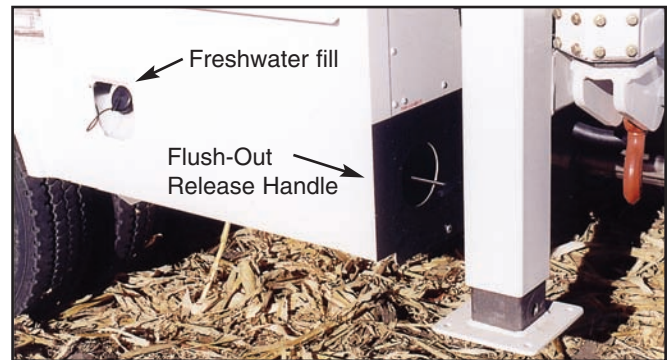
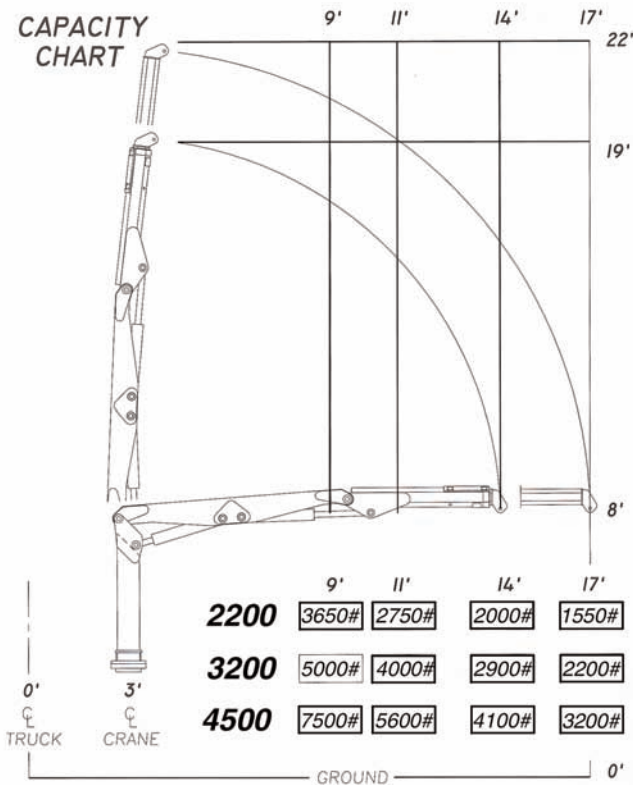
Designed & Manufactured
in the USA **STELLAR**
INDUSTRIES INC.

1184-14 AG OTR Series



1184 AG OTR Series

Specifications	2200	3200	4500
Crane Rating	22,000 foot/pounds	32,000 foot/pounds	45,000 foot/pounds
Boom Extension	Hydraulic 32 inches	Hydraulic 32 inches	Hydraulic 32 inches
Max. Horizontal Reach	14 foot-from CL of Crane 17 foot-from CL of Truck	14 foot-from CL of Crane 17 foot-from CL of Truck	14 foot-from CL of Crane 17 foot-from CL of Truck
Rotation	320 degree power (worm gear drive)	290 degree power (worm gear drive)	290 degree power (worm gear drive)
Lifting Capacities (from CL of truck)	3,650 lbs. @ 9 foot 2,750 lbs. @ 11 foot 2,000 lbs. @ 14 foot 1,550 lbs. @ 17 foot	5,000 lbs. @ 9 foot 4,000 lbs. @ 11 foot 2,900 lbs. @ 14 foot 2,200 lbs. @ 17 foot	7,500 lbs. @ 9 foot 5,600 lbs. @ 11 foot 4,100 lbs. @ 14 foot 3,200 lbs. @ 17 foot
Controls	Proportional Radio Control Standard	Proportional Radio Control Standard	Proportional Radio Control Standard
Stowed Height (above truck frame)	65 inches	60 inches	71 inches
Mounting Space Required	24 inches	24 inches	32 inches
Approx. Shipping Weight	1,350 lbs.	1,900 lbs.	2,400 lbs.



The conveniently mounted fresh water rinse tank is shown on the left, and the Stellar exclusive calcium chloride Flush-Out release handle on the right.



280 West Third Street
Garner, Iowa 50438
1-800-321-3741
Fax: 641-923-2812
E-mail: sales@tiretruck.com
www.tiretruck.com

Designed & Manufactured in the U.S.A.

*Specifications may change without notification.
Copyright © 2003 Stellar Industries, Inc.