

STELLAR AGGRESSOR™

1100AR Mini OTR



The Stellar Aggressor 1100 AR (aluminum rack) is an 11' all aluminum body built with Stellar's exclusive plank flooring. The aluminum extruded plank flooring gives the 1100 AR body unmatched strength and durability while reducing weight, thus more payload.

The 1100 AR comes standard with four underbody tool compartments. All tool compartments feature the slide up and in door design to allow unobstructed access to inside the compartments, as well as stainless steel hardware and automotive style slam latches. The left front underbody tool compartment houses the optional air hose reels, air filter and lubricator and 12-volt light reel. Also featured on the 1100 AR is a left side fold down rack and optional wheel well lights. Adding a portable 400 gal. fluid skid to the front of the body gives the ability to service agricultural tires.



The 1100 AR service truck can be equipped with either a model 2200 or 3200 hydraulic knuckleboom crane. Both of these cranes are designed to handle the largest of farm tires and the smaller sized OTR tires. These cranes are both operated by a standard fully proportional radio remote control.



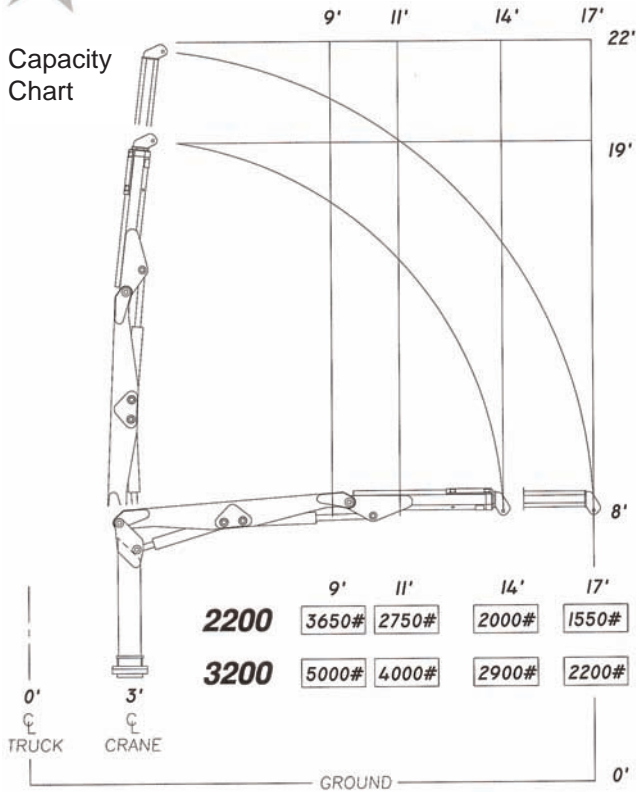
The SHD-66DD direct-driven hydraulic-drive air compressor is mounted on the crane base. This compressor has a 46 CFM at 175 PSI output. The location allows for cool, clean, fresh air intake, and easy maintenance and serviceability. The SHD-66DD carries a 2-year warranty because of these features.

Designed & Manufactured
in the USA

STELLAR
INDUSTRIES INC.

Mini OTR
Series
1100AR

STELLAR AGGRESSOR™ 1100 AR Mini OTR



Model SHD-66DD direct drive hydraulic air compressor is a 4-cylinder, 2-stage compressor with a 100 cubic inch displacement and an output capacity of 46 c.f.m. @ 175 psi. The crane boom is stored in travel position in a unique crane saddle, which will ease wear and tear on the turntable bearing.



Specifications	2200	3200
Crane Rating	22,000 foot/pounds	32,000 foot/pounds
Boom Extension	Hydraulic 32 inches	Hydraulic 32 inches
Max. Horizontal Reach	14 foot-from CL of Crane 17 foot-from CL of Truck	14 foot-from CL of Crane 17 foot-from CL of Truck
Rotation	320 degree power (worm gear drive)	290 degree power (worm gear drive)
Lifting Capacities (from CL of truck)	3,650 lbs. @ 9 foot 2,750 lbs. @ 11 foot 2,000 lbs. @ 14 foot 1,550 lbs. @ 17 foot	5,000 lbs. @ 9 foot 4,000 lbs. @ 11 foot 2,900 lbs. @ 14 foot 2,200 lbs. @ 17 foot
Power Supply Required	PTO & Pump (4 gpm @ 2800 psi)	PTO & Pump (4 gpm @ 2800 psi)
Controls	Proportional Radio Control Standard	Proportional Radio Control Standard
Stowed Height (above truck frame)	65 inches	67 inches
Mounting Space Req.	24 inches	24 inches
Approx. Shipping Weight	1,350 lbs.	1,900 lbs.



280 West Third Street
 Garner, Iowa 50438
 1-800-321-3741
 Fax: 641-923-2812
 E-mail: sales@tiretruck.com
 www.tiretruck.com

Designed & Manufactured in the U.S.A.

*Specifications may change without notification.
 Copyright © 2003 Stellar Industries, Inc.