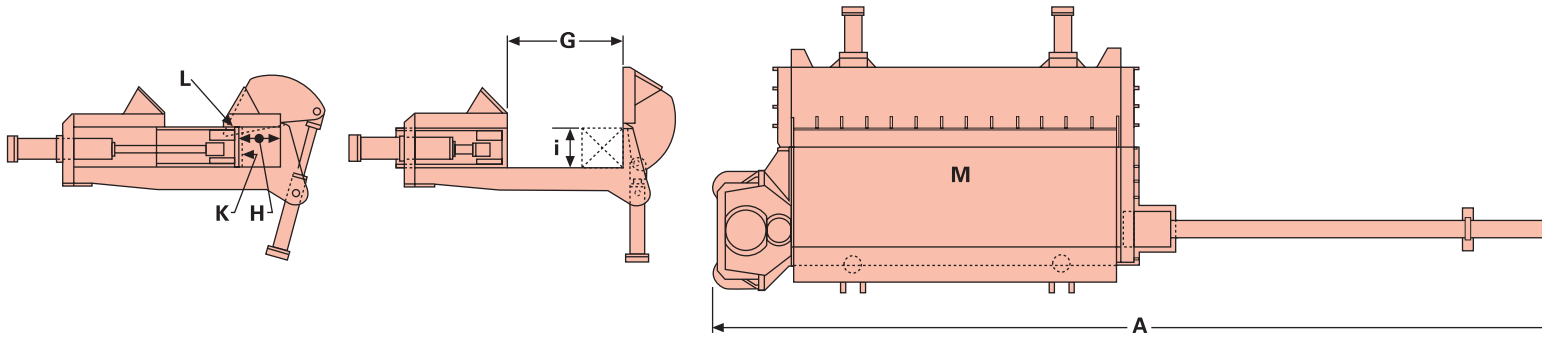


- *Production Reporting Capability*
- *Stall Protection System*
- *External Gib & Blade Adjustments*
- *Harris Worldwide Service*

The Harris SS side squeeze shear uses a clamp-type shear design for processing materials not requiring trapping. It provides maximum productivity through continuous, efficient production while requiring only limited maintenance due to simplicity of operation. The SS shears are available with throat widths of 3' to 5' (.9m to 1.5m) and shearing forces ranging from 300 to 2200 tons.

SS-30-1115B	SS-30-1225B-P	SS-30-1233B-V	SS-30-1235B	SS-26-1305B	SS-30-2205B
71'6" (21793mm)	73'3" (22327mm)	73'3" (22327mm)	73'3" (22327mm)	65'7" (19990mm)	75'6" (23012mm)
25'8" (7823mm)	29'2" (8890mm)	27'2" (8280mm)	29'2" (8890mm)	30' (9144mm)	36'2.5" (11036mm)
25'1" (7645mm)	27'10" (8484mm)	27'10" (8484mm)	27'10" (8484mm)	27'7" (8408mm)	33'3" (10134mm)
21'1" (6426mm)	22' (6706mm)	22' (6706mm)	22' (6706mm)	22'5" (mm)6833	28'1" (8559mm)
60" (1524mm)	60" (1524mm)	37" (940mm)	60" (1524mm)	60" (1524mm)	61" (1549mm)
28" (711mm)	28" (711mm)	30" (762mm)	28" (711mm)	28" (711mm)	42" (1016mm)
10' (3048mm)	10' (3048mm)	8' (2438mm)	10' (3048mm)	10' (3048mm)	14' (4267mm)
58" (1473mm)	58" (1473mm)	34" (864mm)	58" (1473mm)	58" (1473mm)	58" (1473mm)
32" (813mm)	32" (813mm)	32" (813mm)	32" (813mm)	32" (813mm)	42" (1067mm)
30' (9144mm)	30' (9144mm)	30' (9144mm)	30' (9144mm)	26' (7925mm)	30' (9144mm)
3" (76mm)				3" (76mm)	12" (305mm)
8" (203mm)				8" (203mm)	8.5" (216mm)
70"x32"x360"	70"x32"x360"	70"x32"x360"	70"x32"x360"	70"x32"x312"	96"x42"x360"
1778x813x9144mm	1778x813x9144mm	1778x813x9144mm	1778x813x9144mm	1778x813x7925mm	2438x1067x9144mm
120"x32"x360"	120"x32"x360"	96"x32"x360"	120"x32"x360"	120"x32"x312"	168"x42"x360"
3048x813x9144mm	3048x813x9144mm	2438x813x9144mm	3048x813x9144mm	2438x813x7925mm	4267x1067x9144mm
58"x32"x360"	58"x32"x360"	34"x32"x360"	58"x32"x360"	58"x32"x312"	58"x42"x360"
1473x813x9144mm	1473x813x9144mm	864x813x9144mm	1473x813x9144mm	1473x813x7925mm	1473x1067x9144mm
60" w x 28" h	60" w x 28" h	37" w x 30" h	60" w x 28" h	60" w x 28" h	61" w x 42" h
1524x711mm	1524x711mm	939x762mm	1524x711mm	1524x711mm	1549x1067mm
1100T (998t)	1221T (1108 t)	1237T (1123t)	1237T (1123t)	1327T (1204t)	2205T (2000t)
275T (249t)	361T (327 t)	333T (302t)	333T (302t)	373T (338t)	735T (667t)
404T (367t)				373T (338t)	942T (855t)
7.5"			8.75"	8.125"	12.25"
6.625"			7.75"	7.25"	10.75"
4.5" x 58"	4.5" x 58"	4.5" x 34"	4.75"x58"	5" x 58"	6.75" x 58"
20-28 TPH	32-42 TPH	19-29 TPH	32-42 TPH	28-36 TPH	53-60 TPH
3 - 4	3 - 3.5	3.5 - 4	3-3.5	3-3.5	3 - 3.5
5	5.25	5.25	5	4.5	4.25
6.5	8.5	8.5	8.5	6	6.5
(3) 100 HP	(5) 125 HP	(4) 100 HP	(4) 100 HP	(5) 100 HP	(7) 200 HP
3575 PSI	4600 PSI	3500 PSI	3500 PSI	3300 PSI	3250 PSI
246 bars	317 bars	241 bars	241 bars	228 bars	224 bars
304T (276t)	400T (363 t)	285T (259 t)	380T (345 t)	308T (279t)	740T (671t)

# Harris Side Squeeze Shears



## Features:

- Harris Designed Flame Hardened Cylinders with TFC Piston Seals
- Through Bolting on Lid Hinges & Blades
- Fully Guided Side Compression System
- New designed, High Efficiency poppet valve controlled hydraulic power unit
- Replaceable Liners
- Programmable Controller with Modem and Panelview with Touch Screen Located on Operator's Control Station

	SS-20-883B	SS-26-1023B	SS-26-1113B	SS-30-1113B	SS-26-1115B
A Overall Length	49'1" (14960mm)	61'8" (18796mm)	61'10" (18847mm)	61'10" (18847mm)	63'6" (19354mm)
B Overall Width	20'6" (6248mm)	22'4" (6808mm)	22'4" (6808mm)	21'5" (6528mm)	25'8" (7823mm)
C Overall Height	21'11" (6680mm)	22'9" (6935mm)	22'9" (6935mm)	23'3" (7087mm)	25'5" (7747mm)
D Shear Height	17'5" (5182mm)	18'9" (5715mm)	18'9" (5715mm)	18'9" (5715mm)	21'1" (6426mm)
E Shear Throat Width	36" (914mm)	37" (940mm)	37" (940mm)	37" (940mm)	60" (1524mm)
F Shear Throat Height	26" (660mm)	30" (762mm)	30" (762mm)	30" (762mm)	28" (711mm)
G Compression Box Width (open)	8' (2438mm)	8' (2438mm)	8' (2438mm)	8' (2438mm)	10' (3048mm)
H Compression Box Width (closed)	34" (864mm)	34" (864mm)	34" (864mm)	34" (864mm)	58" (1473mm)
I Compression Box	32" (813mm)	32" (813mm)	32" (813mm)	32" (813mm)	32" (813mm)
J Compression Box	20' (6096mm)	26' (7925mm)	26' (7925mm)	30' (9144mm)	26' (7925mm)
K Side Ram Overtravel	3" (76mm)	3" (76mm)	3" (76mm)	3" (76mm)	3" (76mm)
L Lid Overtravel	8" (203mm)	8" (203mm)	8" (203mm)	8" (203mm)	8" (203mm)
M Loading Area (WxDxL)	70"x32"x240"	70"x32"x312"	70"x32"x312"	70"x32"x360"	70"x32"x312"
	1778x813x6096mm	1778x813x7925mm	1778x813x7925mm	1778x813x9144mm	1778x813x7925mm
<b>Shear Dimensions</b>					
Open	96"x32"x240"	96"x32"x312"	96"x32"x312"	96"x32"x360"	120"x32"x312"
	2438x813x6096mm	2438x813x7925mm	2438x813x7925mm	2438x813x9144mm	2438x813x7925mm
Closed	34"x32"x240"	34"x32"x312"	34"x32"x312"	34"x32"x360"	58"x32"x312"
	864x813x6096mm	864x813x7925mm	864x813x7925mm	864x813x9144mm	1473x813x7925mm
Shear Throat	36" w x 36" h	37" w x 30" h	37" w x 30" h	37" w x 30" h	60" w x 28" h
	914x914mm	939x762mm	939x762mm	939x762mm	1524x711mm
Shearing Force	889T (807t)	1016T (922t)	1100T (998t)	1100 tons (998t)	1100T (998t)
Clamp Force	258T (234t)	254T (230t)	275T (249t)	275T (249t)	275T (249t)
Side Ram Force	263T (239t)	373T (338t)	373T (338t)	404T (367t)	373T (338t)
<b>Shearing Capacity</b>					
Round	6.25"	7.125"	7.5"	7.5"	7.5"
Square	5.5"	6.25"	6.625"	6.625"	6.625"
Plate	3.75" x 34"	4" x 34"	4.25" x 34"	4.25" x 34"	4.5" x 58"
Production Rate	12-20 TPH	13-22 TPH	16-24 TPH	16-24 TPH	20-28 TPH
<b>Cuts Per Min.</b>					
Rated Plate	3 - 4	3 - 4	3.5 - 4	3 - 4	3 - 4
Average Cut	6	5	5	5	5
Crosshead only	8	7	7	6.5	6.5
Motors	(3) 100 HP	(3) 100 HP	(3) 100 HP	(3) 100 HP	(3) 100 HP
Operating Pressure	3350 PSI	3300 PSI	3575 PSI	3575 PSI	3575 PSI
	231 bars	228 bars	246 bars	246 bars	246 bars
Weight	150T (136t)	214T (194t)	218T (198t)	246T (223t)	276T (250t)

# Harris SS



## Side Squeeze Shears

### Processes:

*steel mill scrap*

*pipe and plate*

*No. 1 heavy melting scrap*

*No. 2 heavy melting scrap*

*selected sections of freight cars and ship scrap.*

The Harris side squeeze (SS) shear with lid is designed to confine and compress heavy steel mill scrap, freight car, and ship scrap. It provides maximum productivity through continuous, efficient production while requiring only limited maintenance due to simplicity of operation.

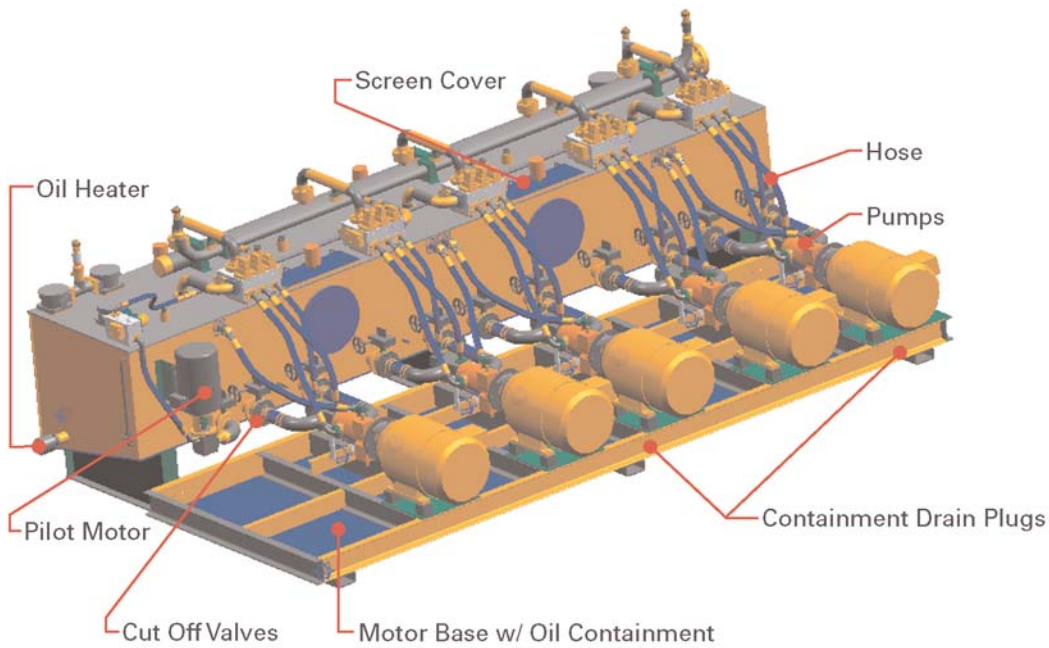


# Harris

200 Clover Reach Dr  
Peachtree City, GA 30269

(800) 373-9131  
(770) 631-7290

(770) 631-7299 FAX  
[www.harriswaste.com](http://www.harriswaste.com)



Flooded suction tanks guarantee pump priming increasing pump life and eliminates dry start-ups.

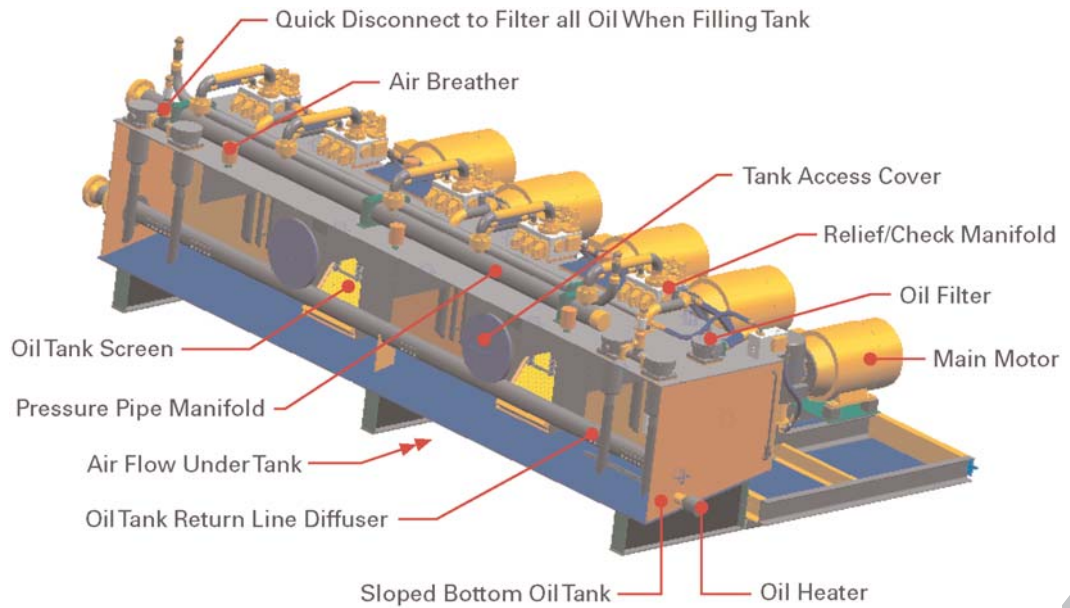
Same brand matched pumps are used for optimum flow and pressure.

Pumps and motors are more accessible with built in drip pan.

Kidney loop filtration/cooler pumps are positive displacement type for better filtration and cooling flow.

Increased use of heavy-duty hoses reduce vibration and noise.

Soft shift vents extend pump life by reducing shock and noise in the system.



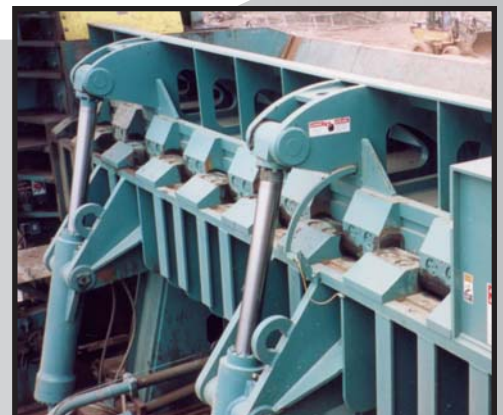
Photos not representative of new equipment



(800) 373-9131



(770) 631-7290



(770) 631-7299 FAX