



# CHIT-KEY VAULT™

SIMPLE IN DESIGN, SUPERIOR IN PERFORMANCE.



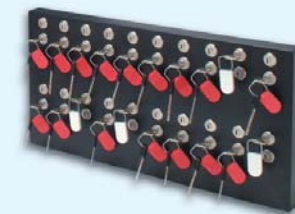
Alarm interface available for Chit-Key Vaults™

Our Chit-Key Vaults™ provide a simple yet clever technique for ensuring the safe return of high-value keys. Chit-Key Vault locks are paired to operate in tandem -- turning one key releases the second key, the first key is then locked in place until the second key is safely returned.

Chit-Key Vaults™ come in two standard sizes, but can be customized to meet specific customer requests. The smaller of the two sizes holds one tandem key position. The second model holds up to six tandem key positions. Both vaults are made of 18-gauge brushed stainless steel and use a variety of lock options.

## The Multi-Chit Panel

For tracking up to 50 keys at a time, the locks on our Multi-Chit Panels are paired up in rows just like the Chit-Key Vault™. These panels are perfect for customers who need to control large numbers of keys, but do not require an electronically-controlled asset security device (Security Asset Manager™).



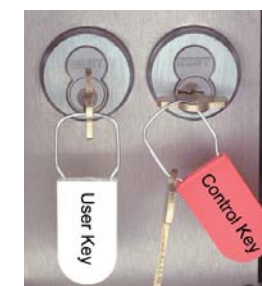
**Tamper Evident Tags**  
Included with our Chit-Key Panels, serialized Tamper Evident Key Tags keep your keys safe and secure, in and out of the Chit-Key Panel.

The dangers our world faces today have never been more real, the challenges never greater. Keys Systems, Inc. takes this challenge very seriously, working every day with government agencies and military organizations across the globe to provide the type of asset security technology required to keep people and property safe and sound.



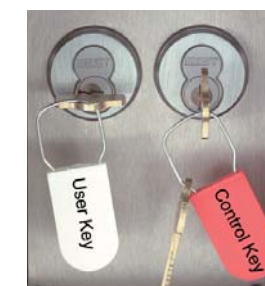
### Step 1:

Open chit-vault door with your user key.



### Step 2:

Insert user key into the empty lock inside the vault and turn it.



### Step 3:

Now turn and remove the control key already inside.



### Step 4:

Use the control key now to lock the chit-key vault door.