

# Stellar Cranes



The 10620 is the perfect crane for mining companies, heavy equipment dealers, construction companies, and various other large equipment companies. This crane features a 55,000-foot/ pound (7.60 ton-m) capacity and can lift a maximum of 10,000-pounds at 3-feet (4,536 kg at 91.4 cm). Stellar Industries was the first U.S. manufacturer in this class of crane to offer these unique features which include the standard proportional radio remote control, hexagonal boom construction, a planetary winch with 60-feet per minute (18.29 m) winch speed and hydraulic extensions to 20-feet (6.10 m) of reach.

## Master Your Control

The Stellar 10620 was the first crane in its class to offer a state-of-the-art variable speed multi-functional radio remote as a standard feature. With the radio remote control, operators can be in the best location to see the work and the load being lifted and it also allows them to stay out of harms way. The radio remote incorporates a variable speed “trigger” that allows the operators to feather the crane for precise control capabilities. Additionally, the radio remote control handle includes engine start/stop functions, compressor on/off, engine speed controls, and an emergency shut-off.



## The Speed You Need

Maximizing winch speed is a common issue with today’s crane operators. Stellar has addressed this issue by incorporating a planetary drive winch system with line speeds up to 60-ft./min. (18.29 m), giving the 10620 crane over twice the speed of the competition. A planetary winch also provides mechanical and hydraulic brakes for added security.



Above: Hexagonal boom construction provides a stronger cross section than square tubing. This reduces boom flex and side to side movement.

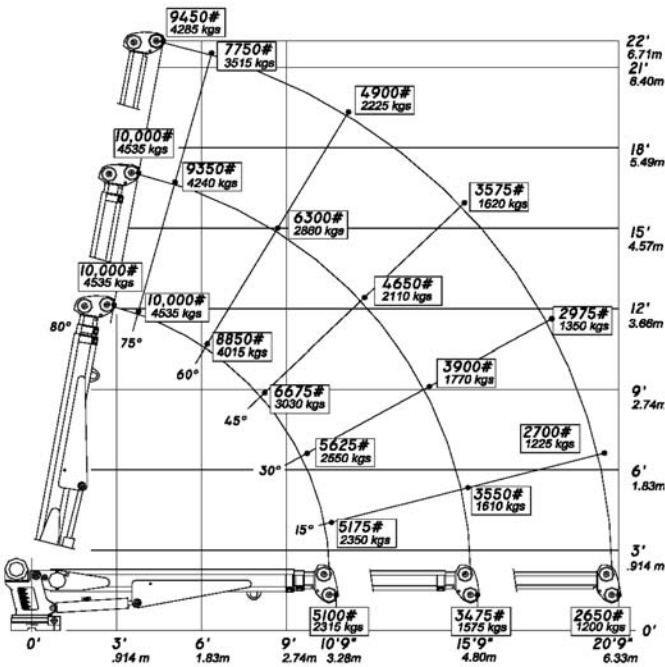
# Stellar Cranes

## Designed With You In Mind

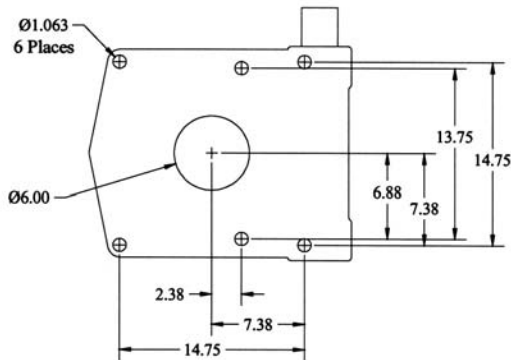
The 10620 telescopic crane is at the top of its class. Stellar's team of designers have set parameters that were developed from customer input.

The 10620 features were designed to allow the user to do their job faster, more efficiently, and more easily than with any competitive product. Stellar Industries, is not only committed to making a quality product, we're committed to helping you work more productively.

6620 Capacity Chart



Hole Mounting Detail



### Model 10620 Crane SPECIFICATION SHEET

Crane Rating:	55,000 ft-lbs (7.60 ton-m)
Standard Boom Length:	10' 9" (3.28) from CL of Crane
Boom Extension:	
1st stage:	Hydraulic 60" (152.4 cm)
2nd stage:	Hydraulic 60" (152.4 cm)
Maximum Horizontal Reach:	20'9" (6.32 m) from CL of Crane
Maximum Vertical Lift: (from crane base)	22' (6.71 m)
Boom Elevation:	-5° to +80°
Stowed Height: (crane only)	34" (86.4 cm)
Mounting Space Required:	20" x 21" (50.8 x 53.3 cm)
Shipping Weight:	2150 lbs (975 kg)
Controls:	Radio control standard for all functions.
Winch:	
Rope Diameter:	7/16" (1.11 cm)
Line pull speed:	60 ft/min (18.29 m)
Max. single part line:	5000 lbs (2268 kg)
Max. double part line:	10,000 lbs (4535 kg)
Rotation:	400° power (worm gear)
Lifting Capacities:	5100 lbs @ 10'9" (2315 kg @ 3.28 m) 3475 lbs @ 15'9" (1575 kg @ 4.80 m) 2650 lbs @ 20'9" (1200 kg @ 6.32 m)
Power Supply Required:	PTO & Pump (8 gpm @ 3000 psi) (30.3 lpm @ 207 bars)

NOTE: All Stellar cranes meet ANSI B30.5 and OSHA 1910.180 specifications.



190 State Street  
P.O. Box 169  
Garner, IA 50438  
Telephone: 800-321-3741  
Fax: 641-923-2812  
Internet: [www.mechanictruck.com](http://www.mechanictruck.com)  
Email: [sales@mechanictruck.com](mailto:sales@mechanictruck.com)

**Quality You Ask For By Name.**  
Designed & Manufactured in the U.S.A.

\*Specifications may change without notification.  
Copyright © 2005 Stellar Industries, Inc.