

**STELLAR**  
**AG FORCE™** *1184 AG OTR Series*



The Stellar AG Force 1184 AG OTR is an innovative tire service truck for multi-purpose use in the farm, truck fleet and small OTR industries. The diversity of this truck will allow the user to meet their needs in a fast, efficient, economical and safe manner far beyond any competitor's model.

The 11' all aluminum body is lightweight and dependable to maximize the payload. With over 200 cubic feet of haul space, this versatile tire service body features an abundance of storage. The floor of the body is made of sturdy aluminum planking, and the hardware is durable stainless steel. The tool compartment doors slide up and in to allow for easy access inside the compartment. Also featured on the 1184 AG body is a left fold-down rack, and optional wheel well lights. The body of the 1184 AG features a drop-down floor to give a low center of gravity for the 400 gal. calcium chloride tank. This allows for maximum storage of the tank, maximum hauling space for the tires, and eliminates any interference with the crane.



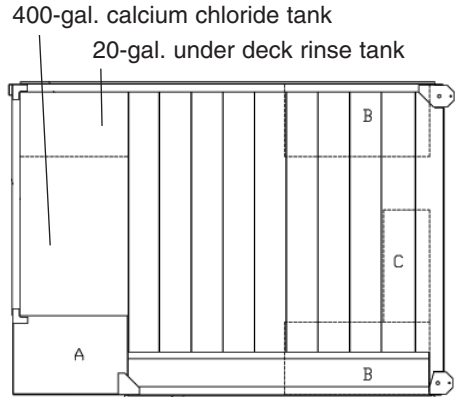
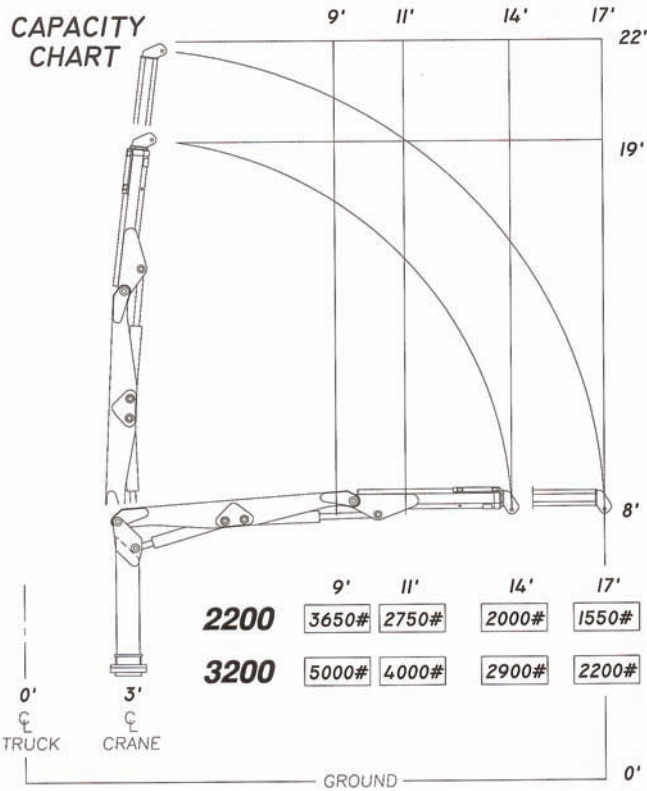
In the left front compartment is the customer preferred Stellar exclusive Ultrafill System. The 1184 AG can also be equipped with an air operated Fill Master pumping system. The 400 gal. calcium chloride tank is equipped with the new, Stellar-exclusive Flush-Out system mounted on the right front side of the body. Optional accessories include 1/2" x 50' and 3/8" x 50' hose reels, a 12V trouble light, plastic storage bins and socket racks.



The 1184 AG truck can be equipped with either a model 2200 or 3200 hydraulic knuckleboom crane. Both of these cranes are designed to handle the largest of farm tires and the smaller sized OTR tires. These cranes are both operated by a standard fully proportional radio remote control.

The SHD-66DD direct-driven hydraulic-drive air compressor is mounted on the crane base. This compressor has a 46 CFM at 175 PSI output. The location allows for cool, clean, fresh air intake, and easy maintenance and serviceability.

The Interchange Module is an option available for the 1184 tire service body. The I.M. is designed to easily fit behind the cab in place of a Stellar crane unit. The I.M. consists of a 23 cubic foot tool storage compartment and an air compressor platform to accommodate a gas-powered or hydraulic driven compressor of your choosing.



- A: Left front vertical compartment  
35W x 64H x 24D  
Horizontal compartment  
91.5W x 21H x 13D
- B: Rear under deck compartments  
44W x 19H x 22D
- C: Under deck jack storage compartment  
14W x 14H x 34D



The **Interchange Module** pictured above is designed to easily fit behind the cab in place of a Stellar crane unit. The I.M. measures 94" x 22" including tool compartment and an air compressor platform. The platform accommodates a gas-powered or hydraulic driven compressor. The advantages of the I.M. include keeping the compressor above deck, adding extra tool storage and allowing the flexibility of mounting a crane in that same area at a later date.



The conveniently mounted fresh water rinse tank is shown on the left, and the Stellar exclusive calcium chloride Flush-Out release handle on the right.

Specifications	2200	3200
Crane Rating	22,000 foot/pounds	32,000 foot/pounds
Boom Extension	Hydraulic 32 inches	Hydraulic 32 inches
Max. Horizontal Reach	14 foot-from CL of Crane 17 foot-from CL of Truck	14 foot-from CL of Crane 17 foot-from CL of Truck
Rotation	320 degree power (worm gear drive)	290 degree power (worm gear drive)
Lifting Capacities (from CL of truck)	3,650 lbs. @ 9 foot 2,750 lbs. @ 11 foot 2,000 lbs. @ 14 foot 1,550 lbs. @ 17 foot	5,000 lbs. @ 9 foot 4,000 lbs. @ 11 foot 2,900 lbs. @ 14 foot 2,200 lbs. @ 17 foot
Power Supply Required	PTO & Pump (4 gpm @ 2800 psi)	PTO & Pump (4 gpm @ 2800 psi)
Controls	Proportional Radio Control Standard	Proportional Radio Control Standard
Stowed Height (above truck frame)	65 inches	67 inches
Mounting Space Req.	24 inches	24 inches
Approx. Shipping Weight	1350 lbs.	1,900 lbs.

\*Specifications may change without notification.  
Copyright © 2003 Stellar Industries, Inc.