

PRINT

# E-290HD



The E-290HD tractor handles the tough jobs, towing loads of up to 20,000 lb.

Low maintenance cost is guaranteed by a fan cooled-motor, rugged automotive differential and large disc brakes.

Mid-shift interruptions are avoided thanks to its industrial battery.

Round-the-clock operation is easy with the roll-out battery option – no expensive battery lifting equipment is required.

## Benefits

**SAFETY.** Four-wheel stability.

**ENDURANCE.** Powerful fan-cooled motor.

**RUGGEDNESS.** Automotive ring gear differential, axle shafts on roller bearings.

**DEPENDABILITY.** Self-adjusting hydraulic brakes, 11" automotive discs.

**PRODUCTIVITY.** Industrial battery, longer running time.

**ERGONOMICS.** Automotive steering wheel.

**BATTERY EFFICIENCY.** 48V/12V converter to equalize cells, extend battery life.

**DURABILITY.** All-steel construction, 1/4" plate body, tubular frame

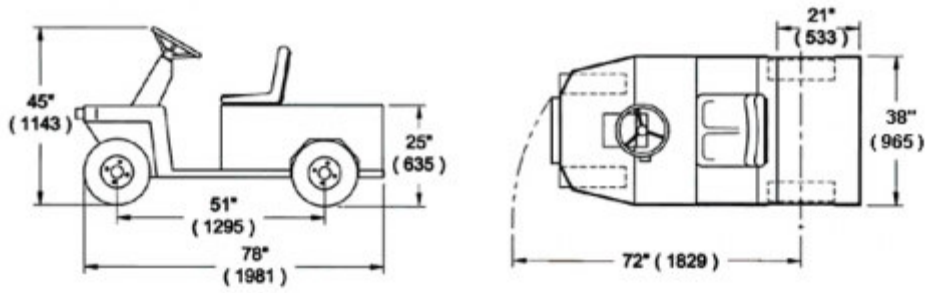
**LOW COST OPTIONAL ROLL-OUT BATTERY INSTALLATION.**

**MOTREC**  
Industry driven  
www.motrec.com



# E-290HD

## Dimensions



### Technical specs

<b>Type</b>	48-volt Tow Tractor
<b>Draw Bar Pull</b>	550 lb. normal, 1,500 lb. maximum draw bar pull. 12,000 lb. towing capacity on flat level surface, with industrial battery.
<b>Speed (Max)</b>	8 mph maximum, unladen.
<b>Motor</b>	15 hp.
<b>Controller</b>	Electronic speed controller.
<b>Battery</b>	Without battery. 16.3"L x 35.2"W x 17.5"H, 1,000 lb. maximum battery size and weight. SB-350 grey connector.
<b>Charger</b>	Without charger.
<b>Transmission</b>	GOODYEAR Eagle Synchronous drive.
<b>Drive axle</b>	Differential with automotive ring gear.
<b>Brakes</b>	Rear wheel hydraulic brakes, large 11" automotive discs, hand lever parking brake.
<b>Steering</b>	Automotive steering wheel.
<b>Suspensions</b>	Dual leaf springs on rear, rigid axle on front.
<b>Seats</b>	Bucket seat on slide adjusters.
<b>Indicators</b>	Digital battery status indicator, hour meter.
<b>Safeties</b>	Deadman seat switch, optional reverse alarm.
<b>Lights</b>	Headlight, tail/brake light.
<b>Accessories</b>	48V/12V converter for 12 volt accessories, horn, bolt-on front bumper and side bars.
<b>Wheels</b>	4.80x8 LRC pneumatic tires.
<b>Unit Weight</b>	1,200 lb. without battery.
<b>Options</b>	Reverse alarm. Maintenance meter. Industrial battery and charger. 6 mph gear ratio, 20,000 lb. draw bar pull. Hitch. Solid soft rubber wheels. Non-marking wheels. Strobe light. Roll-out battery compartment.
<b>Standard</b>	Conforms to requirements for type E, UL 583, ANSI B56.9.
<b>Notes</b>	Specifications are subject to change without notice.



**MOTREC**  
Industry driven  
www.motrec.com