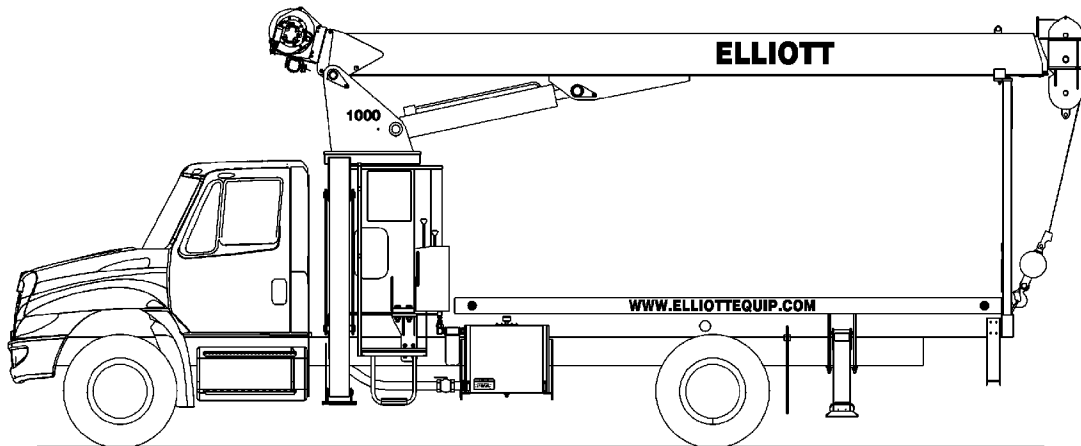


BoomTruck™ 1056



GENERAL UNIT DESCRIPTION

BoomTruck – When it comes to design and engineering, Elliott's BoomTruck is generations apart from the traditional crane—making it ideal for the exacting demands of today's job sites. With an industry-leading 18-ton capacity crane equipped with the 38' boom option, the BoomTruck delivers high performance with increased efficiency—from its high-speed outrigger set-up, boom extension and retraction to its high-pull winch. Plus our BoomTruck requires very little maintenance thanks to its layaway hoist, 10 percent fewer fittings than competitor models and the industry's best warranty. That gives you time to enjoy operator amenities like the built-in cup holders and 12-volt charger on the operator console.

Basic unit includes base assembly supporting front mounted rotating turret, hydraulically powered rotation mechanism, oil reservoir, oil, and dual operator console with levers linked to manual hydraulic control valve mounted to pedestal. Base mounted "A" frame link type outriggers hydraulically powered, individually controlled main outriggers. Under frame mounted outriggers for rear stabilization. High strength steel three section hydraulic and cable telescoping boom with one double acting 7" lift cylinder. Boom can be stowed over cab to increase payload & eliminate payload to boom interference on bed. Load Moment Indicator System with display and hydraulic function lockout for load capacities. Power take off and pump drive, pressure gauge, three-section gear pump and holding valves on all cylinders. Control console is equipped with Anti-2-Block system, engine start/stop, variable speed foot throttle, horn, winch burst of speed, and outrigger motion alarm. Additional equipment includes triangle reflector kit, backup alarm, and fire extinguisher. Paint BoomTruck white, outriggers red and bed and boxes black. Installed on chassis, tested and ready to operate. Unit certified to ANSI B30.5 for Mobile and Locomotive cranes.

Technical Specifications

Crane Capacity: 20,000 pounds at a five feet load radius.

Maximum Tip Height: 66' height (96' with optional 30' telescopic jib).

Control Console: Dual operator stations equipped with four single axis levers for the main crane controls with independent controls for all outriggers for precise leveling. The levers for the outriggers and stabilizers are offset and shorter than the main crane control levers for added safety. Each side includes a bubble level gauge, engine start/stop switch, signal horn button, variable speed foot throttle, lifting capacity chart, range diagram chart, and boom angle indicator. A system pressure gauge is located on the driver's side console.

Boom: Three-section fully proportional, high strength steel plated rectangular tube sections. A maximum boom tip height of 66 feet mounted on a truck. The boom nose is equipped with one upper and lower sheave for two and three-part line operation. Assembly includes heavy-duty cylinder fittings, pivot pins, and replaceable wear pads.

Winch: Mounted at the base of the boom for a long fleet angle and flat level spooling of cable. Winch is driven by planetary reducer and powered by a hydraulic motor. Burst-of-speed winch provides increased line speed. The winch brake is spring applied, pressure release design. Supplied with 275 feet of 9/16" diameter wire rope with a single-line wire rope pull of 9,600 pounds, and a down-haul ball with swivel hook for single part line.

Load Moment Indicator (LMI) System: LMI System senses hoist cylinder pressures, boom length and boom angle with hydraulic function lockout. The display console is equipped with an integrated bar graph showing crane utilization, boom angle, boom length, a mode select controls for main boom and jib operation, and an anti-two block with an audio / visual warning and shut-off functions to limit hook-boom point contact. The display console can be positioned at both operator stations.

Outriggers: A-frame link type outriggers for a minimum of 17'-7" extended span. Additional stabilization provided by rear under frame mounted stabilizers.

Frame: Full length, all welded rigid 4-plate design sub-frame for a 16' bed that bolts to the truck frame under the pedestal.

Turret: Turret is one-piece weldment. Turret rotates on large diameter ball bearing.

Rotation: Hydraulic motor drives turret through double reduction planetary swing drive for 372 degree non-continuous rotation. The swing drive system has a spring applied, pressure release brake.

Boom Extension: 4" external cylinder with 3-1/4" rod extends the largest telescopic boom section. The top boom section extends with wire rope.

Lift: One double-acting 7" full displacement, long stroke cylinders provide smooth and stable boom elevation. Holding valve prevent boom from lowering in event of hose failure.

Cylinders: All cylinders use microhoned cylinder tubing, chrome shafts, top grade packing and protective rod wipers. Cylinder-mounted holding valves provided on all load-holding cylinders.

Hoses: All high pressure hose is wire braid reinforced with a minimum safety factor of 4 to 1.

Oil Tank Capacity: 70 gallon mounted to truck frame on roadside.

Hydraulic System: Equipped with cable-shift PTO, gear type 3-section pump, SAE O-ring face seals on pressure lines, a 10 micron return line filter and a shut-off ball valve. The control valve distributes all flow to obtain a 39 gpm for the hoist system, 9 gpm to the swing circuit and 23 gpm for the other crane functions. System is parallel open center type, and the operating pressure is approximately 3,000 PSI.

Cab Equipment: PTO cable and switch with indicator light installed in truck cab. U/L approved 5:BC dry chemical fire extinguisher installed in truck cab.

Operator Manual: One copy of operation, maintenance, safety and parts manual provided with each unit.

Installation: Unit installed on customer's truck, painted, system and tank filled with oil, tested, inspected, certified and ready to operate.

Standard Paint: Paint BoomTruck white, outriggers red, and bed and boxes black.

Bumper: Bureau of Motor Carrier Safety rear bumper.

Weight: Approximately 16,000 lbs. with 16' steel-floor bed less truck.

Truck Chassis Requirements: Approximately 144" C.A. RBM 1,463,000 in-lb. per rail, 12,000 lb. front axle and 33,000 lb. GVWR required. Trucks must have extended rear frame, increased cooling, heavy-duty front and rear springs, 12V electrical system with high capacity alternator, cab clearance stop/tail/backup lights, and I.D. lamps. Additional equipment to consider: front tow hook, pintle hook, mud and snow tires for off highway use. Recommended GVWR is minimum for BoomTruck with flatbed only. Contact factory when additional equipment is to be added.

Options

Bed: Length 16', width 96" with steel tread plate or wood floor bolted to subframe, 6" rub rail and heavy duty cross members. Stake pockets on both sides of bed. Spray suppressant splash guard installed. Chassis stop/turn/backup lights remounted as necessary. Rear clearance and side marker lights with reflectors on bed.

- 18' Fixed Jib
- 30' telescopic jib
- Hook Block for 2/3-part load line
- Rear Mount
- Tractor Mount
- Tool Boxes
- Front Jack for 360 degree crane operation
- Pedestal Mounted Tool Circuit
- Radio Remote Control Operation
- Steel Gravity Level Platform
- Miscellaneous Options...Contact factory for details

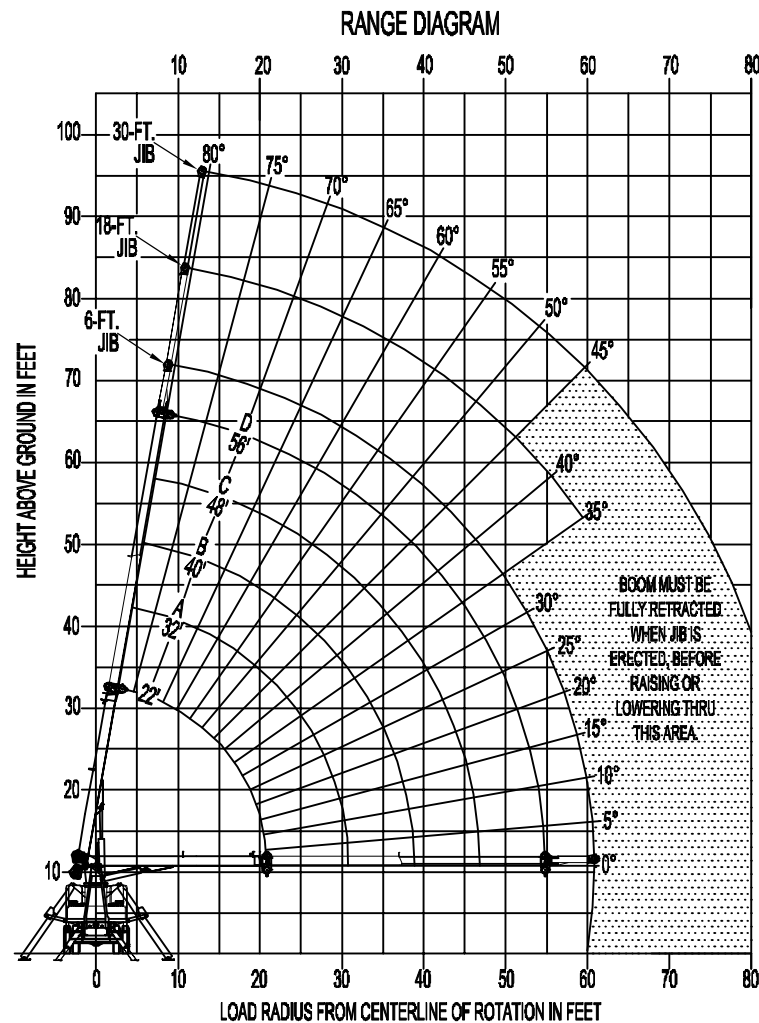


4427 South 76th Circle
Omaha, NE 68127
Phone: 402-592-4500
Fax: 402-592-4553
Email: info@elliottequip.com
www.elliottequip.com

Notes:

MAIN BOOM LOAD RATINGS								JIB LOAD RATINGS										
LOAD RATINGS IN LBS. WITH OUTRIGGERS AND STABILIZERS EXTENDED								LOAD RATINGS IN LBS. WITH OUTRIGGERS AND STABILIZERS EXTENDED										
LOAD RADIUS IN FEET	LOADED BOOM ANGLE	22-FT. BOOM		32-FT. BOOM		48-FT. BOOM		56-FT. BOOM		8-FT. FIXED LENGTH JIB		18-FT. FIXED LENGTH JIB		18-30 FT. EXTENDABLE JIB				
		A	B	A	B	C	D	LOADED BOOM ANGLE	8-FT. JIB	LOADED BOOM ANGLE	18-FT. JIB	LOADED BOOM ANGLE	18-FT. JIB RETRACTED	LOADED BOOM ANGLE	30-FT. JIB EXTENDED			
5	75	20000																
10	62	11500	71	10500	75	9500				80	4500	80	2900	80	2800	80	1900	
15	46	8000	62	7300	68	6700	72	6100	75	5600	75	4000	75	2400	75	2300	75	1600
20	20	5600	51	5400	60	5100	65	4800	69	4500	70	3500	70	2000	70	1900	70	1300
25			38	4200	51	4000	59	3800	64	3600	65	3000	65	1700	65	1600	65	1050
30			17	3400	41	3300	51	3200	58	3000	60	2700	60	1500	60	1400	60	900
35					28	2800	43	2700	51	2500	55	2400	55	1200	55	1100	55	800
40							33	2200	44	2100	50	2100	50	1100	50	1000	50	650
45							18	1900	36	1800	45	1800	45	950	45	850	45	550
50									26	1500	40	1500	40	850	40	750		
55									4	1200	30	1300	35	750	35	650		
											20	1100						
											10	1000						
											0	900						
	0	4500	0	2800	0	2000	0	1500	0	1200								
	230		160		120		100		90		DEDUCTIONS FOR STOWED FIXED LENGTH JIB							
	360		240		200		160		140		DEDUCTIONS FOR STOWED EXTENDABLE JIB							

Notes:



THIS AERIAL DEVICE IS NON-INSULATING. IT PROVIDES NO ELECTRICAL PROTECTION. CONTACT WITH OR INADEQUATE CLEARANCE TO AN ENERGIZED LINE OR APPARATUS IS AN ELECTROCUTION HAZARD.